

LED EXTERIOR STEP LIGHT SERIES

APPLICATION: For concrete use only
BODY: High grade die-cast aluminum with 0.3% Copper to prevent corrosion in concrete applications.
 Supplied standard with four 3/4" NPS holes.
FACE PLATE: High-grade die-cast aluminum
GASKET: Single piece molded silicon for wet location
LENS: Frosted tempered glass
EXTERNAL LOUVER: Anodized 45" cut-off louver
REFLECTOR: High performance aluminum reflector assembly for superb light output.
LISTING:
 UL/ cUL for wet locations.



Ordering Example: ST4BX-LED-CW-12V-ST401-WH

HOUSING	FACE PLATE	FINISH
ST4BX-LED-CW-12V*	ST401	WH- WHITE
ST4BX-LED-WW-12V*	ST402	BK- BLACK
ST4BX-LED-CW-120V	ST403	BZ- BRONZE
ST4BX-LED-WW-120V		SN- SATIN NICKEL
		AL- SATIN ALUMINUM

***MUST BE USED WITH REMOTE DRIVER**



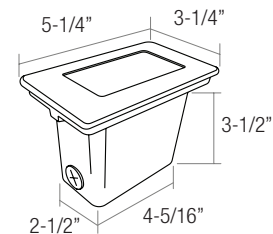
ST401-BR



ST402-BR



ST403-BR



ST3 LED EXTERIOR STEP LIGHTS SERIES

APPLICATION: Surface mount
BODY: High grade die-cast aluminum with 0.3% Copper to prevent corrosion in concrete applications.
FACE PLATE: High-grade die-cast aluminum
GASKET: Single piece molded silicon for wet location
LENS: Frosted tempered glass
EXTERNAL LOUVER: Anodized 45" cut-off louver
REFLECTOR: High performance aluminum reflector assembly for superb light output.
LISTING: UL/ cUL for wet locations



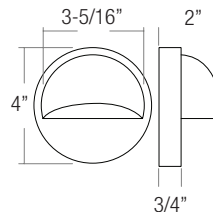
Ordering Example: ST301-LED-WW-WH

SERIES	FINISH
ST301-LED-WW*	WH- WHITE
ST301-LED-CW*	BK- BLACK
ST302-LED-WW*	BZ- BRONZE
ST302-LED-CW*	SI- SILVER

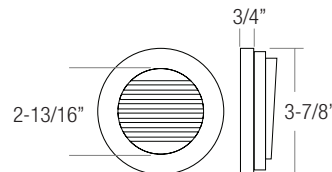
***MUST BE USED WITH REMOTE DRIVER**



ST301-LED-BR



ST302-LED-BR



LED



LED STEP LIGHT