

# LED EXTERIOR STEP LIGHT SERIES

**APPLICATION:** For concrete use only

**BODY:** High grade die-cast aluminum with 0.3% Copper to prevent corrosion in concrete applications.

Supplied standard with four 3/4" NPS holes.

**FACE PLATE:** High-grade die-cast aluminum

**GASKET:** Single piece molded silicon for wet location

**LENS:** Frosted tempered glass

**EXTERNAL LOUVER:** Anodized 45" cut-off louver

**REFLECTOR:** High performance aluminum reflector assembly for superb light output.

**LISTING:**

UL/ cUL for wet locations.



**Ordering Example: ST4BX-LED-CW-12V-ST401-WH**

HOUSING	FACE PLATE	FINISH
ST4BX-LED-CW-12V*	ST401	WH- WHITE
ST4BX-LED-WW-12V*	ST402	BK- BLACK
ST4BX-LED-CW-120V	ST403	BZ- BRONZE
ST4BX-LED-WW-120V		SN- SATIN NICKEL
		AL- SATIN ALUMINUM

**\*MUST BE USED WITH REMOTE DRIVER**



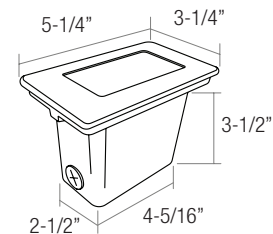
**ST401-BR**



**ST402-BR**



**ST403-BR**



# ST3 LED EXTERIOR STEP LIGHTS SERIES

**APPLICATION:** Surface mount

**BODY:** High grade die-cast aluminum with 0.3% Copper to prevent corrosion in concrete applications.

**FACE PLATE:** High-grade die-cast aluminum

**GASKET:** Single piece molded silicon for wet location

**LENS:** Frosted tempered glass

**EXTERNAL LOUVER:** Anodized 45" cut-off louver

**REFLECTOR:** High performance aluminum reflector assembly for superb light output.

**LISTING:** UL/ cUL for wet locations



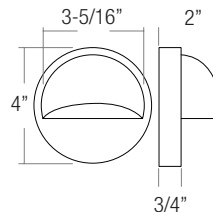
**Ordering Example: ST301-LED-WW-WH**

SERIES	FINISH
ST301-LED-WW*	WH- WHITE
ST301-LED-CW*	BK- BLACK
ST302-LED-WW*	BZ- BRONZE
ST302-LED-CW*	SI- SILVER

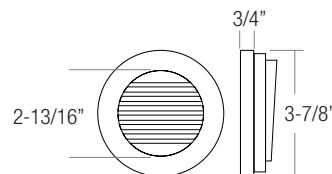
**\*MUST BE USED WITH REMOTE DRIVER**



**ST301-LED-BR**



**ST302-LED-BR**



LED

STEP LIGHT

LED STEP LIGHT