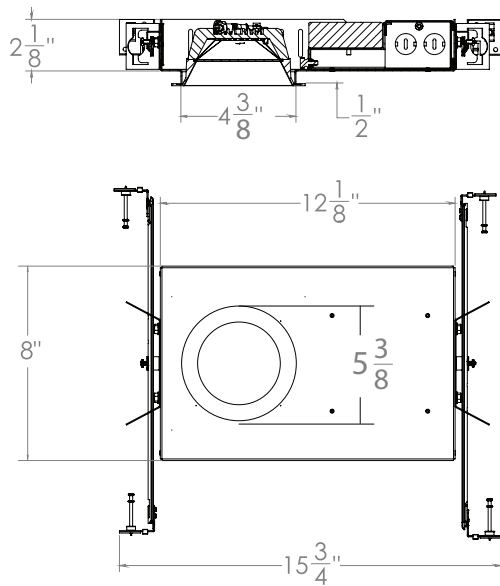




REFLECTOR/ TRIM COLOR



WH-WH-White



NOMINAL LUMENS	DELIVERED LUMENS	WATTAGE
1200	1396	14W
900	1019	10W

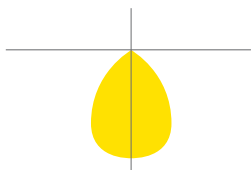
Based on 4000K, 90+ CRI. Actual wattage may vary +/- 5%

FEATURES

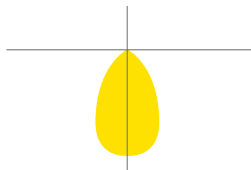
An innovative, high-performance shallow plenum architectural LED round downlight for applications that demand a shallow housing, optimizing functionality and glare free illumination. Available in a range of distributions and lumen packages, it is the perfect solution for commercial elevator lobbies, hospitality, high-end residential, and retail applications.

LUMENS	900, 1200 (Custom lumen packages available)
CCT & DYNAMIC PLATFORMS	27K, 30K, 35K, 40K, 50K, Dims to Warm
CRI	90+ Standard, 98+ optional
COLOR QUALITY	2 Step MacAdam Ellipses
DISTRIBUTION	NSPD(Narrow Spot-15°), SPD(Spot-24°), MD(Medium-36°) WD(Wide-60°), VWD(Very Wide-60°)
TRIM OPTIONS	Round, Trim and Trimless Downlighting
REFLECTOR COLORS	WH (White), Custom RAL
FLANGE COLORS	WH (White), Custom RAL
DIMMING	0-10V Flicker Free 1% Dimming Standard (DIM10), LUTH, LUTFTB, ELD010.1, ELD0DMX.1, ELD0DALI.1, DIMTR
EMERGENCY	10W - Up to 1000L Output 20W - Up to 2000L Output EMG-LED-G2-10W-SDT - Self Diagnostic (Consult Factory)
LIFETIME	102,000 Hours
PHOTOMETRIC TESTS	In Accordance with IES LM79-08, LM80 and TM-30, TM-21

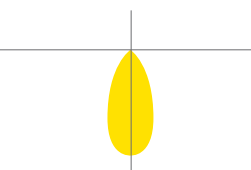
VWD: VERY WIDE
Candlepower Distribution Curve



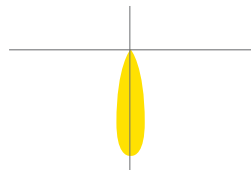
WD: WIDE
Candlepower Distribution Curve



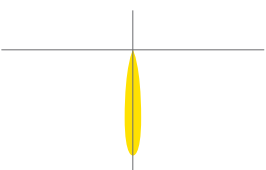
MD: MEDIUM
Candlepower Distribution Curve



SPD: SPOT
Candlepower Distribution Curve



NSPD: NARROW SPOT
Candlepower Distribution Curve



Reference IES files for additional distribution curve information.



OPTICS

Modular Optics Available with 15°, 24°, 36°, 60° and 70° field interchangeable optics design with 50° cutoff to source. Top-down flash characteristic for superior glare control. The optics attached directly the light engine to the Trim for complete optical alignment and sufficient efficacy.

HOUSING

Thermally protected, specification grade recessed housing. For new construction non insulated or insulated ceilings where housing will be in direct contact with insulation. Die-formed all aluminum construction mat black painted for maximum heat dissipation, rust protection and glare free illumination.

MOUNTING

Pre-installed bar hangers allow housing to be positioned and locked at any point within a 24" joist span. Bar hangers can fit onto T-Bar spline with additional slots and holes for special mounting methods if necessary. Butterfly brackets are also provided and are constructed from 18-gauge steel and can be adjusted vertically. Butterfly brackets may be installed with 3/4" or 1-1/2" lathing channel, 1/2" EMT, or optional C-Channel mounting bars are available.

DRIVER ELECTRICAL INFORMATION

The LED driver is rated for 50 to 60Hz at 120V/277V also available in 347V input, produces less than 20%THD, and has a power factor between 90% and 100%, and is thermally protected for additional safety. Junction box and Driver can be accessed from below the ceiling and above the ceiling. Junction Box is Listed for through branch circuit wiring.

LISTINGS

c-UL-us - Listed for Feed Through Wiring.

c-UL-us - Listed for Damp Location.

All LED luminaires are rated and tested to LM-79 and LM-80 standards by an independent laboratory.

Energy Star, JA8 and California Title 24 compliant.

DIMMING & DRIVER INFORMATION

DIM10 - 0-10V dimming on either MVOLT 120V or 277V, 347V. Dimmable down to 1% of initial lumens, standard.

DIMTR - Triac & Electronic low voltage dimming. Available in 120V.

LUTH - Lutron LDE1 Hi-Lume 1% EcoSystem LED driver with Soft-on, Fade-to-Black dimming technology.

LUTFTB - Lutron PEQ0E Hi-Lume Premier 0.1% EcoSystem LED Driver with Soft-on in Fade-to-Black dimming technology.

ELD010.1 - EldoLED SoloDrive 0-10V. Dimming down to 0.1%.

DALI - DALI DT6, DT8 dimming down to 1%. Available on all luminaires up to 100 watts.

ELDODMX - EldoLED PowerDrive dimming down to 0.1%. Please see EldoLED website for wiring diagrams and a list of compatible DMX and Dali control systems.

WARRANTY

Five-year carefree warranty for parts and components. (Labor not included.)

LED DYNAMIC PLATFORM OPTIONS



Dims to Warm with SmartDimming Technology. At 100% full brightness the luminaire is at 3000K. When dimmed to 1%, the light transitions to 1800K, creating a warm ambiance within the space.

	TYPE	LUMEN	DIMMING	VOLTAGE	EMERGENCY OPTIONS	MOUNTING OPTIONS
HIGH PERFORMANCE	SR4-LED-IC	<input type="checkbox"/> 900L <input type="checkbox"/> 1200L	<input type="checkbox"/> DIM10 <input type="checkbox"/> DIMTR <input type="checkbox"/> LUTH <input type="checkbox"/> LUTFTB <input type="checkbox"/> ELD010.1 <input type="checkbox"/> DALI.1 <input type="checkbox"/> ELDODMX.1	<input type="checkbox"/> 120 <input type="checkbox"/> 277 <input type="checkbox"/> 347 (DIM10 only) <input type="checkbox"/> MVOLT	<input type="checkbox"/> EMG-LED-10W <input type="checkbox"/> EMG-LED-20W <input type="checkbox"/> EMG-LED-G2-10W-SDT* * Consult Factory for Self Diagnostic	<input type="checkbox"/> Blank - Standard bar hangers (included) <input type="checkbox"/> BP31 - 27" C-channel bar hangers. <input type="checkbox"/> RIF - RIF filter.

DIMTR, LUT2W - 120V only

LUTH, ELD010, DALI, ELDODMX - 120-277V

TRIM OPTIONS

TRIM TYPE	LUMENS	OPTICS	CCT-CRI	FINISH
<input type="checkbox"/> SR4-F-1428 (Flanged trim)	<input type="checkbox"/> 900L <input type="checkbox"/> 1200L	<input type="checkbox"/> NSPD <input type="checkbox"/> SPD <input type="checkbox"/> MD <input type="checkbox"/> WD <input type="checkbox"/> VWD	<input type="checkbox"/> 27K-90 <input type="checkbox"/> 30K-90 <input type="checkbox"/> 35K-90 <input type="checkbox"/> 40K-90 <input type="checkbox"/> 50K-85	<input type="checkbox"/> W-WH
<input type="checkbox"/> SR4-TL-1428 (Trim-less)	<input type="checkbox"/> 900L <input type="checkbox"/> 1200L	<input type="checkbox"/> NSPD <input type="checkbox"/> SPD <input type="checkbox"/> MD <input type="checkbox"/> WD <input type="checkbox"/> VWD	<input type="checkbox"/> 27K-90 <input type="checkbox"/> 30K-90 <input type="checkbox"/> 35K-90 <input type="checkbox"/> 40K-90 <input type="checkbox"/> 50K-85	<input type="checkbox"/> WH

SR4-LED-IC-900L-DIM10-MVOLT-40K-90

INPUT WATTS: **10.2**

LUMENS: **1019**

CRI: **90**

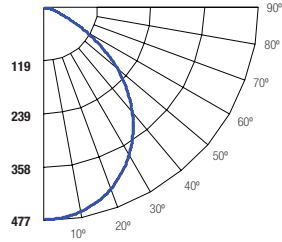
EFFICACY: **100**

CCT: **4000K**

TEST NO.: **EL1218107**

SPACING CRITERIA: **1.26**

Candle Power Distribution (Candelas)



Zonal Lumens Summary

Zone	Lumens	%Lamp	%Fixt
0-20	172.16	16.90	16.90
0-30	359.59	35.30	35.30
0-40	572.23	56.20	56.20
0-60	910.57	89.40	89.40
0-80	1010.25	99.20	99.20
0-90	1018.71	100.00	100.00

Luminance (Average candela/M²)

Angle in Degrees	Average 0°	Average 45°	Average 90°
45	56959	56484	55111
55	43391	43067	44900
65	23482	28874	28601
75	13819	14907	15348
85	9915	14506	16199

Lumens Per Zone

Zone	Lumens
0-10	44.98
10-20	127.19
20-30	187.42
30-40	212.64
40-50	196.03
50-60	142.30
60-70	72.67
70-80	27.01
80-90	8.47

Candela Tabulation

0	
0	477.07
5	475.02
15	454.29
25	412.01
35	348.50
45	264.74
55	163.59
65	65.23
75	23.51
85	5.68
90	0.29

Coefficients of Utilization - Zonal Cavity Method

Effective Floor Cavity Reflectance 0.20

RC		80%				70%				50%				30%				10%				0%			
RW		70%	50%	30%	10%	70%	50%	30%	10%	50%	30%	10%	50%	30%	10%	50%	30%	10%	50%	30%	10%	50%	30%	10%	0%
ROOM CAVITY RATIO	0	119	119	119	119	116	116	116	116	111	111	111	106	106	106	102	102	102	100	100	100	100	100	100	100
	1	111	107	103	100	108	104	101	98	100	98	95	96	94	92	93	91	89	87	87	87	87	87	87	87
	2	102	95	89	84	100	93	88	83	90	85	81	86	83	79	84	80	78	76	76	76	76	76	76	76
	3	94	85	78	72	92	83	77	71	80	75	70	78	73	69	75	71	68	66	66	66	66	66	66	66
	4	87	76	68	62	85	75	68	62	72	66	61	70	65	60	68	63	59	58	58	58	58	58	58	58
	5	80	69	61	55	78	68	60	54	66	59	54	64	58	53	62	57	53	51	51	51	51	51	51	51
	6	75	62	54	48	73	61	54	48	60	53	48	58	52	47	57	51	47	45	45	45	45	45	45	45
	7	69	57	49	43	68	56	48	43	55	48	43	53	47	42	52	46	42	40	40	40	40	40	40	40
	8	65	52	44	39	63	52	44	39	50	43	39	49	43	38	48	42	38	36	36	36	36	36	36	36
	9	61	48	40	35	59	48	40	35	46	40	35	45	39	35	44	39	35	33	33	33	33	33	33	33
	10	57	45	37	32	56	44	37	32	43	36	32	42	36	32	41	36	32	30	30	30	30	30	30	30

RC - Ceiling Cavity Reflectance

RW - Wall Reflectance

SR4-LED-IC-1200L-DIM10-MVOLT-40K-90

INPUT WATTS: **13.9**

LUMENS: **1396**

CRI: **90**

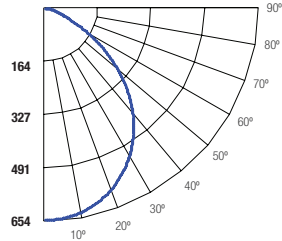
EFFICACY: **100**

CCT: **4000K**

TEST NO.: **EL1218108**

SPACING CRITERIA: **1.26**

Candle Power Distribution (Candelas)



Zonal Lumens Summary

Zone	Lumens	%Lamp	%Fixt
0-20	236.04	16.90	16.90
0-30	492.99	35.30	35.30
0-40	784.50	56.20	56.20
0-60	1248.19	89.40	89.40
0-80	1384.61	99.20	99.20
0-90	1396.18	100.00	100.00

Luminance (Average candela/M²)

Angle in Degrees	Average 0°	Average 45°	Average 90°
45	78485	77642	75486
55	60005	59337	61435
65	32539	39973	39109
75	19245	20609	20955
85	14296	19952	22064

Lumens Per Zone

Zone	Lumens
0-10	61.66
10-20	174.38
20-30	256.95
30-40	291.50
40-50	268.68
50-60	195.01
60-70	99.48
70-80	36.93
80-90	11.57

Candela Tabulation

0	
0	654.19
5	651.56
15	622.98
25	565.15
35	478.86
45	364.79
55	226.23
65	90.39
75	32.74
85	8.19
90	0.38

Coefficients of Utilization - Zonal Cavity Method

Effective Floor Cavity Reflectance 0.20

RC		80%				70%				50%				30%				10%				0%			
RW		70%	50%	30%	10%	70%	50%	30%	10%	50%	30%	10%	50%	30%	10%	50%	30%	10%	50%	30%	10%	50%	30%	10%	0%
ROOM CAVITY RATIO	0	119	119	119	119	116	116	116	116	111	111	111	106	106	106	102	102	102	100	100	100	100	100	100	100
	1	111	107	103	100	108	104	101	98	100	98	95	96	94	92	93	91	89	87	87	87	87	87	87	87
	2	102	95	89	84	100	93	88	83	90	85	81	86	83	79	84	80	78	76	76	76	76	76	76	76
	3	94	85	78	72	92	83	77	71	80	75	70	78	73	69	75	71	68	66	66	66	66	66	66	66
	4	87	76	68	62	85	75	68	62	72	66	61	70	65	60	68	63	59	58	58	58	58	58	58	58
	5	80	69	61	55	78	68	60	54	66	59	54	64	58	53	62	57	53	51	51	51	51	51	51	51
	6	75	62	54	48	73	61	54	48	60	53	48	58	52	47	57	51	47	45	45	45	45	45	45	45
	7	69	57	49	43	68	56	48	43	55	48	43	53	47	42	52	46	42	40	40	40	40	40	40	40
	8	65	52	44	39	63	52	44	39	50	43	39	49	43	38	48	42	38	36	36	36	36	36	36	36
	9	61	48	40	35	59	48	40	35	46	40	35	45	39	35	44	39	35	33	33	33	33	33	33	33
	10	57	45	37	32	56	44	37	32	43	36	32	42	36	32	41	36	32	30	30	30	30	30	30	30

RC - Ceiling Cavity Reflectance

RW - Wall Reflectance

1- Luminaire will be shipped with Powerpacks pre-installed, ready to be integrated to designated control systems

2- Luminaire will be shipped with Sensors installed on the luminaire, allowing for individual luminaire control. Luminaires will be ready to be integrated with designated control systems

3- Luminaire will be shipped with Sensors to be remotely installed on the ceiling. Luminaires will be ready to be integrated with designated control systems

BRAND	EASYFIT by EnOcean	LUTRON	enlighted	LEVITON®	OSRAM	PHILIPS EasySense	legrand®
CONTROL UNIT	<input type="checkbox"/> LEDRU LED Relay Zone Controller 0-10V ¹ <input type="checkbox"/> LEDDU LED Zone Controller 0-10V ¹	<input type="checkbox"/> FCJS-010 Lutron Vive 0-10V Individual Pow Pak (Luminaire is shipped Vive Enabled) ¹⁴ <input type="checkbox"/> FCJS-ECO Lutron Vive Eco-system Pow Pak (Luminaire is shipped Vive Enabled) ¹⁴	<input type="checkbox"/> CU-4E-FMH Fixture Mount Control Unit ¹⁵	<input type="checkbox"/> ZL027 –NOW Intellect Power Control Module ¹⁶ <input type="checkbox"/> ZL027 –NOW Intellect Power Control Module ¹⁶	<input type="checkbox"/> EN-WCM2-ZB-DR Wireless Control Module ¹⁷ <input type="checkbox"/> EN- ALC-ZB-BK-DR Wireless Area Lighting Control Module ¹⁷ <input type="checkbox"/> ZBHA-CLM-DIM-ENC Connected Lighting Module DIM ¹⁷	<input type="checkbox"/> SBR -BS Xitanium SR Bridge ¹⁸	<input type="checkbox"/> LMFC-011 ON/OFF/0-10V dimming fixture controller ¹⁹
INTEGRAT SENSOR	N/A	N/A	N/A	N/A	N/A	N/A	N/A
*WIRELESS OCCUPANCY SENSOR	<input type="checkbox"/> EOSCU-W-EO Occupancy Sensor - Ceiling Mounted (Must be specified with LEDRU or LEDDU control unit) ³	N/A	N/A	N/A	N/A	N/A	<input type="checkbox"/> LMDC-100 Dual technology PIR Ceiling Mount Occupancy Sensor ³
*WIRELESS DAYLIGHT SENSOR	<input type="checkbox"/> ELLSU-W-EO Light Level Sensor - Ceiling Mounted (Must be specified with LEDRU or LEDDU control unit) ³	N/A	N/A	N/A	N/A	N/A	<input type="checkbox"/> LMLS-400 Single zone switching and dimming digital photosensor ³
*WIRELESS OCCUPANCY & DAYLIGHT SENSOR	N/A	N/A	<input type="checkbox"/> SU-5E-IoT IoT Node Micro Sensor ³ <input type="checkbox"/> SU-5E-CL Connected Lighting Micro Sensor ³ <input type="checkbox"/> SU-5E-IL Independent Lighting / Enlighted One Micro Sensor ³ <input type="checkbox"/> SU-5S-H-(IoT/CL/IL) Surface Mount Sensor ³ (Must be specified with CU- 4E-FMH Control Unit)	<input type="checkbox"/> ZL00J -TOW Intellect Intelligent Fixture Control System ³ (Must be specified with ZL027 –NOW Control Unit)	<input type="checkbox"/> EN-CLM-PIR-DD-ZB SensiLUM™ Wireless Integrated Sensor <input type="checkbox"/> EN-SCPPH-1500-ZB Wireless Passive Infrared Occupancy and Photo Sensors ³ (Must be specified with EN-WCM2-ZB-DR or EN- ALC-ZB-BK-DR Control Unit)	<input type="checkbox"/> SNS200- CMP SNS200 for grouping ³	N/A
ACCESORIES	N/A	N/A	<input type="checkbox"/> TMC-SU-5E Tile Mount Carrier <input type="checkbox"/> CBL-5E-CU4-30N 30 inch Sensor Cable for CU-4 and IoT Ready™ drivers <input type="checkbox"/> CBL-5E-CU4-7F 7 foot Sensor Cable for CU-4 and IoT Ready™ drivers	N/A	N/A	N/A	N/A
NOTES	N/A	4- Luminaire will be compatible with Lutron LRF2-OCR2B-P-WH Ceiling mount 360° occupancy/vacancy sensor & LRF2-DCRB-WH Ceiling-mount daylight sensor. Sensors must be ordered through Lutron.	5- Luminaire will be compatible with ENLIGHTED SU-5E-IoT, SU-5E-CL, SU-5E-IL, SU-5S-H, Sensors.	6-Luminaire will be compatible with Leviton Intellect App & Keypad Room Controller	7-Luminaire will be compatible with EN-SCPPH-1500-ZB Wireless Passive Infrared Occupancy and Photo Sensors	8-Luminaire will be compatible with Philips field and wireless switch.	9-Luminaire will be compatible with DLM Room control system LMPB-100. DLM control system must be orderd through Legrand.