

# SL1

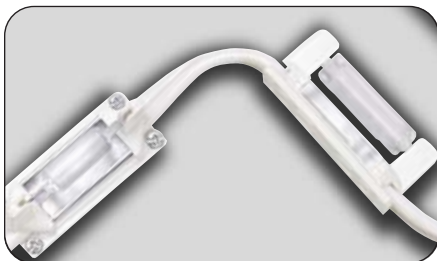
## RIGID LOOP XENON LAMP



To determine the most attractive and efficient form of lighting for your application, begin by selecting the best lamp type, lamp spacing, and wattage. Then design the system for your specific needs by selecting the right accessories.

As a general rule, the basic version of our products uses 5-watt lamps 3" on center and can uniformly illuminate surfaces positioned as close as 2" to 3" from the fixture. Lamp sockets are designed to be attached with mounting screws, offering complete flexibility of adjustment in countless directions. These products feature 26,000 hours of rated life and a pleasant 2,400°K color temperature.

### LAMP STYLE TYPE



#### PART#: SL1-5W (5 WATTS)

The SL1-5W is the most versatile and widely chosen fixture, as it is suitable for most applications and delivers an optional combination of lumen output, lamp life, and color temperature.



#### PART#: SL1-10W (10 WATTS)

When higher temperature are tolerable in a particular application, the SL1-10W can offer greater lumen output and color temperature. This lamp is not compatible with lens covers.

### HOW TO SPECIFY (Specify by catalog number: )

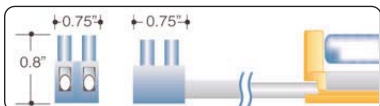
**Q T Y - 1 0 0 - S L 1 - 3 - 1 2 - 5 - F - L C - M C**

QUANTITY	LENGTH SPECIFY/FT.	PRODUCT CODE	LAMP SPACING	VOLTAGE	WATTAGE	LAMP TYPE	LENS OPTION	OPTION
			2.4 2.4" O.C.	12V	5W	F-Frosted	PUT COLOR OF LENS	MOUNTING CHANNEL
			3 3" O.C.	24V	10W	C-Clear		
			4 4" O.C.					
			5 5" O.C.					
			6 6" O.C.					

### ORDERING INFORMATION, PLEASE SPECIFY

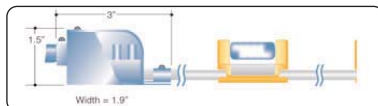
-		- S L 1 -		-		-		-	
QUANTITY	LENGTH SPECIFY/FT.	PRODUCT CODE	LAMP SPACING	VOLTAGE	WATTAGE	LAMP TYPE	LENS OPTION	OPTION	
SPECIFIED BY:		TYPE:		JOB NAME:					

### REQUIRED ACCESSORIES PER SECTION



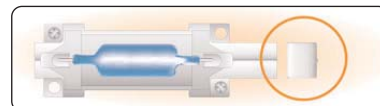
#### TERMINAL BLOCK CONNECTORS

PART#: SL-TB \_\_\_\_\_  
# OF SECTION



#### MINI JUNCTION BOX CONNECTORS

PART#: SL-JBC \_\_\_\_\_  
# OF SECTION



#### END CAP

PART#: SL-EC \_\_\_\_\_  
# OF SECTION

# SL1

## RIGID LOOP XENON LAMP

### OPTIONS



#### PART#: SL1-LC (LENS COVER)

A clear polycarbonate lens may be used to protect lamps from contact when the application requires such protection. The lenses are open-ended so as to facilitate ventilation. Lens covers may only be used with 3-and 5-watt lamps.



#### PART#: SL1-MC (MOUNTING CHANNEL)

For straight-run applications, we offer a tough, high-temperature plastic channel. The channel can be screwed in place and the lamp socket pushed into position, resulting in a very simple installation and flawless linear integrity.



#### COLORED LENS

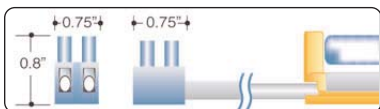
Colored polycarbonate lenses are available if desired.

Colors available:

● Red ● Green ● Blue ● Yellow ○ Clear

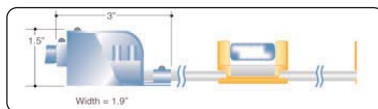
PART#: SL1-LC-RED, SL1-LC-GREEN, SL1-LC-BLUE, SL1-LC-YELLOW, SL1-LC-CLEAR

### ACCESSORIES



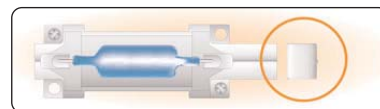
TERMINAL BLOCK CONNECTORS

PART#: SL-TB (REQUIRED)



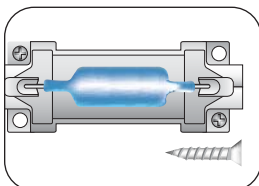
MINI JUNCTION BOX CONNECTORS

PART#: SL-JBC (REQUIRED)



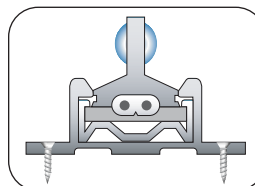
END CAP

PART#: SL-EC (REQUIRED)



#### PART#: SL1-SC (MOUNTING SCREWS)

Four holes are found in each lamp socket. Two screws in opposite corners must be tightened for proper installation



#### PART#: SL1-CL (CHANNEL CLAMPS)

These clamps, which can easily be screwed into position, are compatible with the SL1/SL2-MC mounting channel.

### SL1/SL2 MAXIMUM FIXTURE SIZE

LAMP SPACING	2.4" O.C.	3" O.C.	4" O.C.	6" O.C.
NUMBER OF LAMPS/FOOT	5	4	3	2
MAX. Length @ 12V 5W	9.6'	12'	16'	24'
MAX. Length @ 12V 10W	4.8'	6'	8'	12'
MAX. Length @ 24V 5W	19.2'	24'	32'	48'
MAX. Length @ 24V 10W	9.6'	12'	16'	24'

The maximum capacity of a fixture must not exceed 20 amps (480 watts @ 24 volts and 240 watts @ 12 volts). If a run length exceeds these limitations, then it should only be provided by multiple fixtures. Each fixture would then require an independent feed running to the transformer. Additionally, fixtures using 5-watt and 10-watt lamps 6" on center are further restricted in size to prevent excessive drops in voltage. Please call our technical department for more details.

## SYSTEM LAYOUT &amp; TRANSFORMER

## SYSTEM LAYOUT

In designing a lighting system, consideration must be given to the following points:

1. Maximum length of each fixtures run
2. Output load of each transformer circuit
3. Total load of transformer.

To avoid a voltage drop, long runs of the product can only be maintained by centrally locating the transformer and feeding fixtures on either side.

## MAX. FIXTURE SIZE

The maximum capacity of a fixture must not exceed 20 amps (480 watts @ 24 volts and 240 watts @ 12 volts). If a run length exceeds these limitations, then it should only be provided by multiple fixtures. Each fixture would then require an independent feed running to the transformer. Additionally, fixtures using 5-watt and 10-watt lamps 6" on center are further restricted in size to prevent excessive drops in voltage. Please call our technical department for more details.

## TRANSFORMERS



Transformers are UL- and CUL-listed for use with lighting fixtures. These transformers are for use with 120/240 VAC/60 Hz input. The 24/12 volt secondary outputs are protected by inherent fuses with a maximum rating of 20 amps. The appropriate transformer can easily be determined by multiplying the number of lamps by the watts per lamp. For larger transformers (ODX-750S, ODC-750S, ODX-1000 and ODX-1200X), consideration should be given to the maximum capacity of each fused output. Capacities shown are conservative underestimates by approximately 20%.

## WATTS/LAMP CODE

MAX. LAMPS  
/CIRCUIT

5 W/24V

10 W/24V

96 Lamps

48 Lamps

Lamp Spacing

Maximum Lengths

2.4" O.C.

19.2 FT.

10 FT.

3" O.C.

24 FT.

12 FT.

4" O.C.

32 FT.

16 FT.

6" O.C.

48 FT.

24 FT.

## TRANSFORMER SPECIFICATION GUIDE

Requested wattage of transformer = Lamp Wattage X number of lamp/ft X Length

5W

2.4" O.C. = 5 lamps

10W

3" O.C. = 4 lamps

4" O.C. = 3 lamps

5" O.C. = 2.4 lamps

6" O.C. = 2 lamps

## USE FORMULA TO DETERMINE WHICH TRANSFORMER TO USE

Requested wattage of transformer = Lamp Wattage X number of lamp/ft X Length

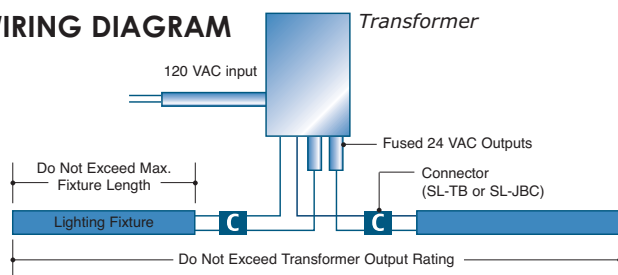
150W

5W

4" O.C. = 3 Lamps

10'

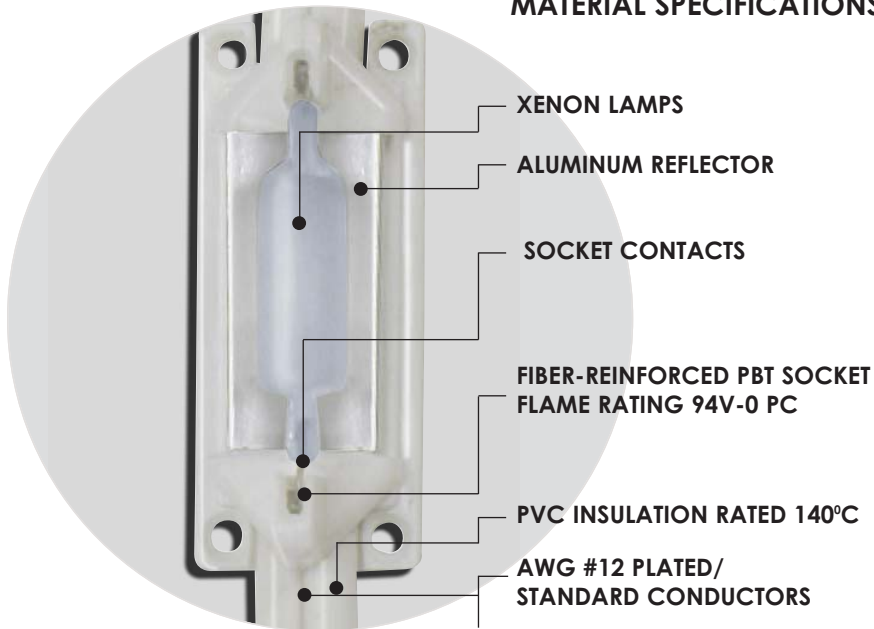
## WIRING DIAGRAM



QTY.	Part#	Type	Output(12v)	Output(24V)	APPROXIMATE SIZES AND WEIGHT			
					Depth	Height	Width	Weight
	EV24-150	Magnetic	1@150 watts	1@150 watts	2-15/16"	7-9/16"	3-1/16"	10 lbs.
	EV24-200	Magnetic	1@200 watts	1@200 watts	2-15/16"	7-9/16"	3-1/16"	12 lbs.
	ODC-250S	Magnetic	1@250 watts	-	3-3/8"	8-1/16"	4-3/16"	16 lbs.
	ODX-250S-24	Magnetic	-	1@250 watts	3-3/8"	8-1/16"	4-3/16"	16 lbs.
	EV24-300	Magnetic	1@300 watts	1@300 watts	3-3/8"	8-1/16"	4-3/16"	16 lbs.
	ODX-500	Magnetic	2@250 watts	1@500 watts	4-1/4"	9-7/16"	4-11/16"	20 lbs.
	ODX-600S	Magnetic	2@300 watts	1@600 watts	4-1/4"	9-7/16"	4-11/16"	20 lbs.
	ODC-750S	Magnetic	3@250 watts	-	4-1/4"	9-7/16"	4-11/16"	28 lbs.
	ODX-750S-24	Magnetic	-	2@375 watts	4-1/4"	9-7/16"	4-11/16"	28 lbs.
	ODX-1000	Magnetic	4@250 watts	2@500 watts	4-15/32"	8-13/32"	7-13/16"	32 lbs.
	ODX-1200S	Magnetic	4@300 watts	2@600 watts	5-7/16"	10-9/16"	6-3/4"	35 lbs.

## DETAILED SPECIFICATIONS

## MATERIAL SPECIFICATIONS



## HEAT DATA

## FIXTURES

Sufficient ventilation is needed to control the temperatures produced by light fixtures.

We fully comply with NEC/NFPA 70 Articles 410-415, which stipulate that all fixtures shall be built, installed, or equipped with guards or shades, so as to avoid the exposure of combustible material to temperatures above 90°C or 194°F.

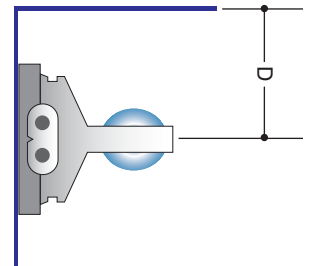
Installation of Linia Cove Lighting Systems must adhere to the minimum space requirements illustrated below in order to ensure compliance with the above regulations.

## TRANSFORMERS

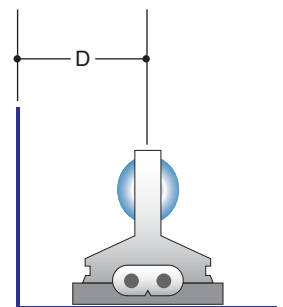
Open air flow is critical to the spatial placement of transformers. Areas that have high temperatures or lack of sufficient air flow are not suitable for installation of transformers.

RESULTS USING  
BASIC SYSTEM/HORIZONTAL

WATTS	MINIMUM DISTANCE (D)
5	1"
10	1.5"

RESULTS USING  
BASIC SYSTEM/VERTICAL

WATTS	MINIMUM DISTANCE (D)
5	0.5"
10	1"



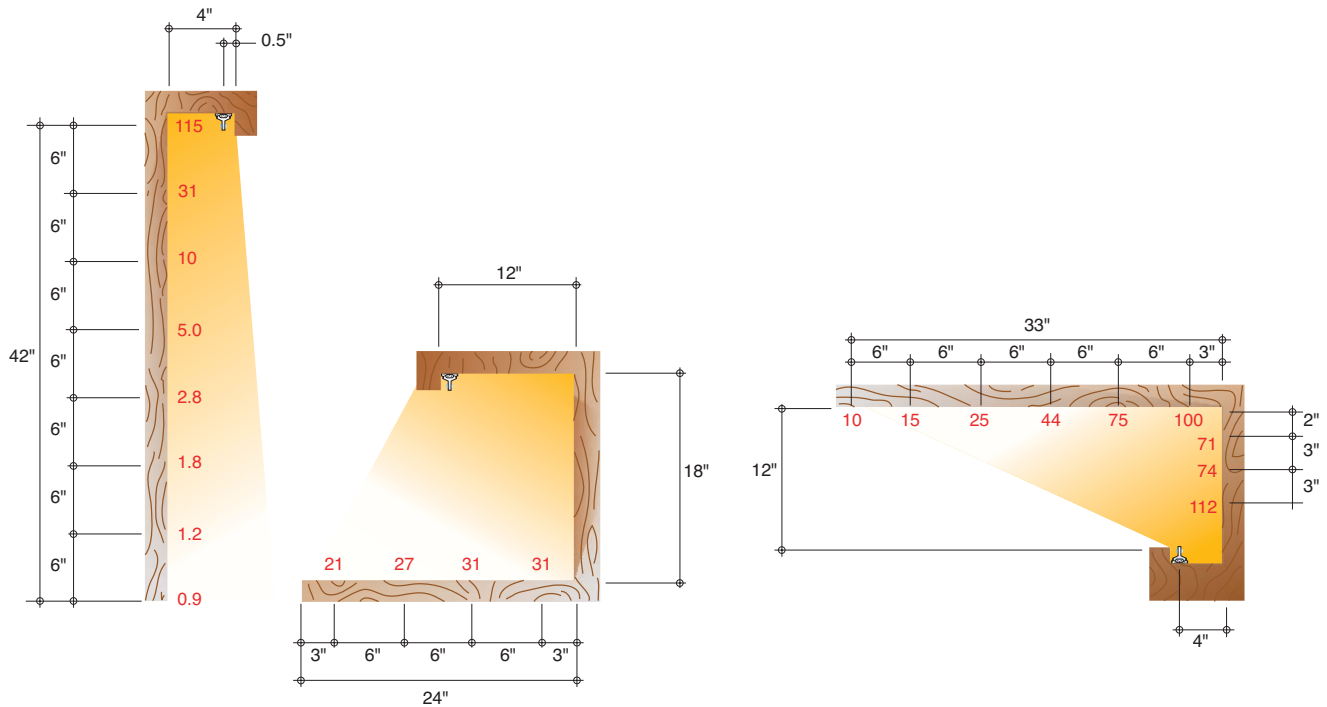
## PHOTOMETRICS

## FOOTCANDLE SUMMARY

This sections show typical point-by-point footcandle values for three typical applications.

## Reflectance for each is as follows:

Overhang=53%; Under Cabinet=55%; Cove=82%



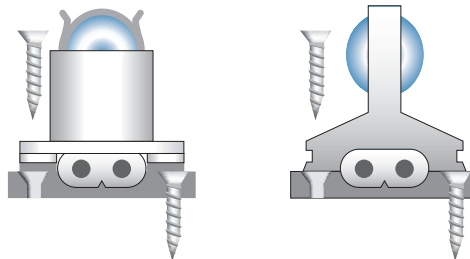
## CONVERSION FACTORS

## Lamp Wattage:

- 5 Watt, 32 Lumen Lamp
- 10 Watt, 95.0 Lumen Lamp

## Lamp Spacing:

- 2.4" O.C., Multiply by 1.24
- 4.0" O.C., Multiply by 0.73
- 6.0" O.C., Multiply by 0.51



## LAMPING

16" 5 Watt/40 Lumen  
3" O.C. Spacing,  
48" Total Length

