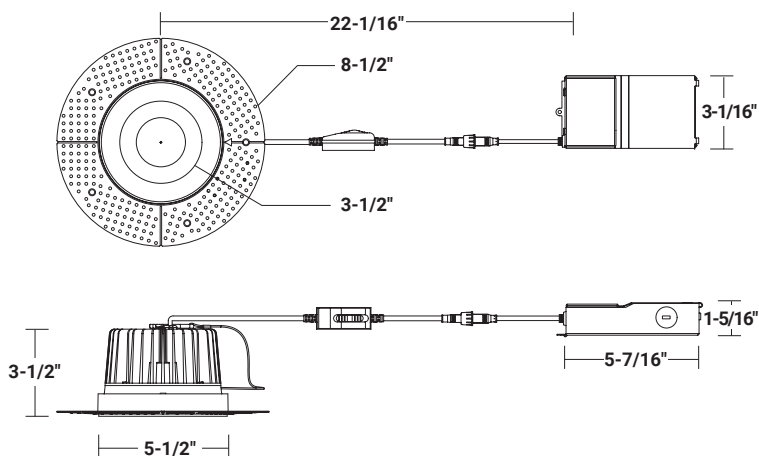




DIMENSIONS



NOMINAL LUMENS	DELIVERED LUMENS	WATTAGE
2000L	2393L	22W

Based on 4000K, 90+ CRI. Actual wattage may vary +/- 5%

INSTALLATION

Cut hole in ceiling. Insert luminaire into opening by squeezing spring clips on both sides of luminaire. The width in ceiling needed for the driver to fit is 3".

For wet location application, you **MUST** seal all gaps between the ceiling and fixture with weatherproof silicone sealant. This deters moisture and water from damaging fixtures and other mechanical ceiling elements. Installation hole size: 5-1/2"

FEATURES

SEAMLESS INTEGRATION, RADIANT ILLUMINATION

This 6" canless downlight features a trimless, modular design for easy installation and a regressed lens and smooth reflector for a radiant, glare-free illumination. Engineered for new construction, remodel, or retrofit applications and accommodates insulated and dropped ceilings. Five selectable CCT allow for versatile atmospheres. Ideal for use in lobbies, showrooms, offices, living spaces, hallways, and studios in corporate, residential, commercial, retail healthcare and hospitality spaces. No housing or driver necessary. Wet location and IC rated.

LUMENS	2000L
CCT	27K/30K/35K/40K/50K
CRI	90+ Standard
COLOR QUALITY	3-Step MacAdam Ellipse
MOUNTING	Recessed Trimless
DIMMING	DIMTR - 10% Triac Dimming
BEAM ANGLE	MD (Medium, 38°), ND (Narrow, 24°) and WD (Wide, 60°)
FINISH	White (W-WH)
WORKING TEMP.	-20°C (-4°F) to 40°C (104°F)
UGR	UGR<19
EMERGENCY	16W High Voltage Inverter (Remote)
LIFETIME	L70 at 50,000 Hours
PHOTOMETRIC	In accordance with IES LM79-08, LM80 and TM-30, TM-21

- Small aperture and shallow depth allow for unlimited applications.
- Wet location suitable.
- Airtight and IC rated for direct contact with insulation.
- Remote driver; no housing or jbox necessary.

OPTICS

Features a slightly regressed polycarbonate lens and smooth reflector for uniform, low-glare illumination.

Available in 2000L and 5 selectable color temperatures of 2700K/3000K/3500K/4000K/5000K enable different warm to cool moods and atmospheres. CCT factory set to 5000K.

A CRI value of 90 guarantees vibrant, natural color display, while a 38° beam angle makes for a Medium (MD) distribution.

Additional 24° and 60° TIR optics available to order separately.

CONSTRUCTION

A durable, die-cast aluminum body allows for lightweight installation and thermal regulation. A twist and lock module design allows for easy mounting. A small aperture and shallow depth allow for unlimited applications.

Perforated mesh cover designed for a seamless drywall or plaster mud-in.

Remote steel driver/junction box included. Multi-CCT switch located on cord for remote driver.

Airtight, wet location and IC rated. Available in a white finish.

MAINTENANCE

Fixture can be regularly and safely wiped down to ensure optimal fixture performance.

MOUNTING

Suitable for recessed mounting. Recommended hole cut-out size is 5-1/2".

OPTIONS & ACCESSORIES

Available to order separately:

- 16W emergency battery back-up option
- Optional TIR optics: Narrow (ND) at 24° and Wide (WD) distribution at 60°

Extension cable options:

- **RL-ACC-SLIM-1-10F** (10-ft)
- **RL-ACC-SLIM-1-20F** (20-ft)

Rough Plate options:

- **RL-UNV-4/5/6** for use with 4", 5", and 6" downlights.
- **RL-UNV-1/2/3/4/5/6/8/10** - Universal Mounting Plate for 1", 2", 3", 4", 5", 6", 8" and 10" downlights
- **AL-ACC-SLIM-6-F-ROUGHPLATE** for use with 6" downlights
- **RL-ACC-SLIM-6-ROUGHPLATE** for use with 6" downlights

See order chart for details.

DRIVER & ELECTRICAL INFORMATION

Powered by high-quality constant-current power LED drivers which are rated for 50 to 60Hz at 120V-277V input, produce less than 20% THD, and have a power factor of .90 to 1.00.

DIMMING

DIMTR - 10% Triac dimming at 120V.

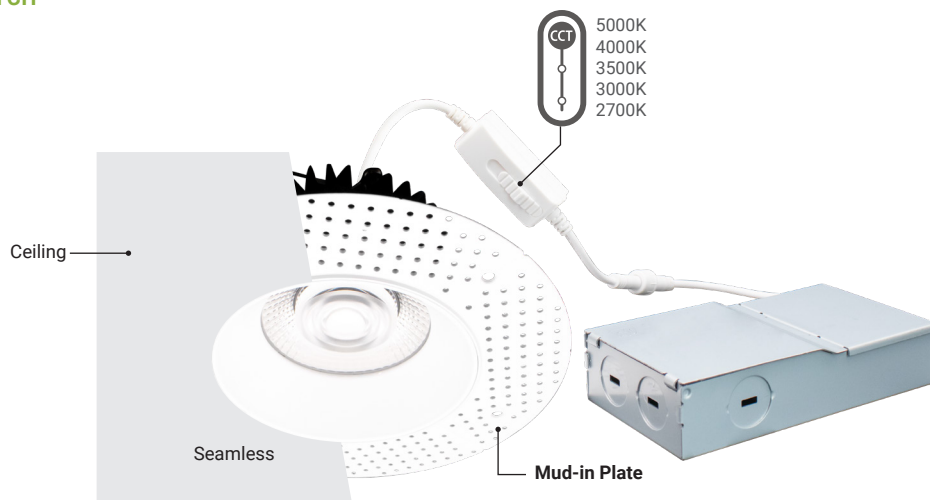
WARRANTY

5-year warranty for parts and components (labor not included).

LISTINGS

ETL listed.
Energy Star certified.
JA8 and Title 20 compliant.
Wet location suitable.
IC-Rated, air-tight ready, and may be in direct contact with insulation.

MULTI-CCT SWITCH



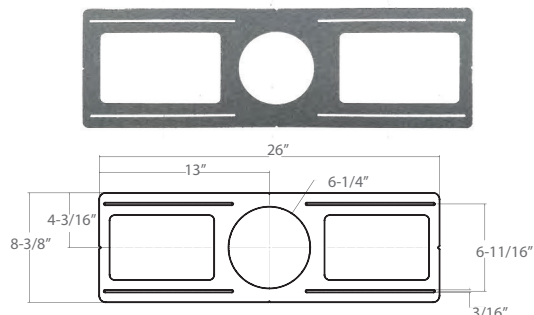
OPTION & ACCESSORIES



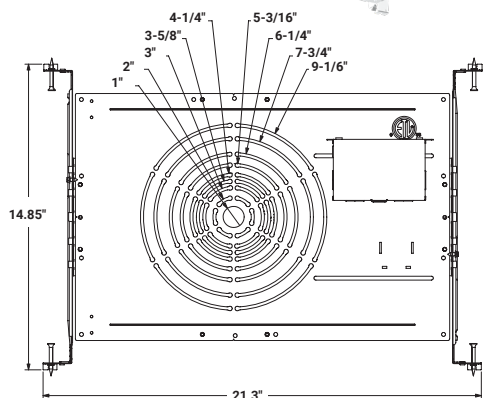
RL-ACC-SLIM-1-10F
10-ft long extension

RL-ACC-SLIM-1-20F
20-ft long extension

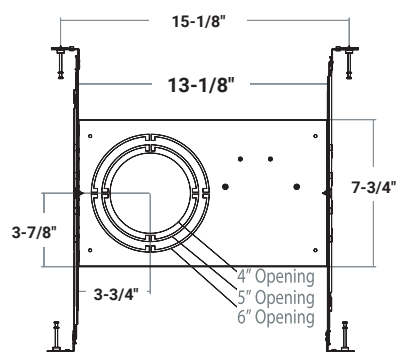
RL-ACC-SLIM-6-ROUGHPLATE
For 6" downlights



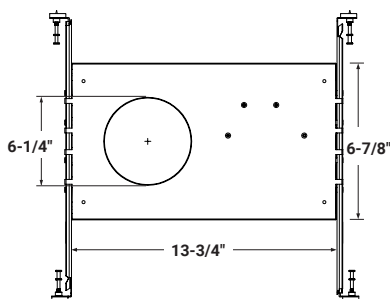
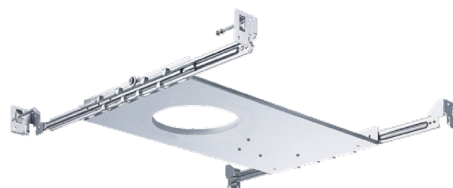
RL-UNV-1/2/3/4/5/6/8/10
For use with 1", 2", 3", 4", 5", 6", 8", and 10" downlights



RL-UNV-4/5/6
For use with 4", 5", and 6" downlights



AL-ACC-SLIM-6-F-ROUGHPLATE
For 6" downlights



Example: **RL672-TL-2000L-DIMTR-120-27K/30K/35K/40K/50K-90-W-WH**

SERIES	LUMENS	DIMMING	CCT	CRI	FINISH	TIR OPTICS	OPTION
RL672-TL	2000L	DIMTR/120 - Triac	27K/30K/35K/40K/50K	90	W-WH - White	ND (24°) MD (38°) - Included Standard WD (60°)	RL-ACC-SLIM-1-10F - 10-ft long extension RL-ACC-SLIM-1-20F - 20-ft long extension RL-UNV-4/5/6 - Universal Mounting Plate for 4", 5" and 6" RL-UNV-1/2/3/4/5/6/8/10 - Universal Mounting Plate for 1", 2", 3", 4", 5", 6", 8" and 10" AL-ACC-SLIM-6-F-ROUGHPLATE - 6" Flanged Roughplate RL-ACC-SLIM-6-ROUGHPLATE - 6" Mounting Plate O-EMG-LED-16W-FLEX - 16W Emergency Back up (Remote)

RL672-TL-2000L-DIMTR-120-27K-30K-35K-40K-50K-90-W-WH

TEST NO.: **EL11192536**

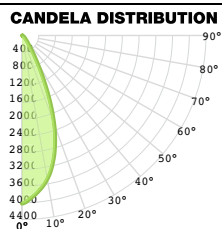
INPUT WATTS: **22.3**

LUMENS: **2393**

EFFICACY: **107**

BEAM ANGLE: **44**

SPACING CRITERIA: **0.69**



CANDELA TABLE

	0°	90°
0°	4020	4020
10°	3487	3516
20°	2249	2342
30°	687	762
40°	198	228
50°	90	97
60°	48	51
70°	12	12
80°	3	4
90°	0	0

LUMINANCE (cd/sq.m)

	0.00°	90.00°
0.00°	332867	332867
45.00°	14769	16564
55.00°	9688	10284
65.00°	5653	5834
75.00°	1828	1867
85.00°	1412	1482

LUMENS PER ZONE

ZONE	LUMENS
0° - 10°	359
10° - 20°	845
20° - 30°	688
30° - 40°	268
40° - 50°	113
50° - 60°	65
60° - 70°	31
70° - 80°	7
80° - 90°	2

ZONAL LUMEN SUMMARY

ZONE	LUMENS	% LUMINAIRE
0° - 20°	1204	50%
0° - 30°	1892	79%
0° - 40°	2160	90%
0° - 60°	2338	98%
0° - 80°	2375	99%
0° - 90°	2377	99%

CONE OF LIGHT

MOUNTING HEIGHT	FC AT BEAM CENTER	BEAM DIA. 0° -180°	BEAM DIA. 90° -270°
6.0 m	111.7 lx	4.8 m	5.0 m
8.0 m	62.8 lx	6.4 m	6.6 m
10.0 m	40.2 lx	8.0 m	8.3 m
12.0 m	27.9 lx	9.6 m	9.9 m
14.0 m	20.5 lx	11.2 m	11.6 m
16.0 m	15.7 lx	12.9 m	13.3 m
18.0 m	12.4 lx	14.5 m	14.9 m
20.0 m	10.0 lx	16.1 m	16.6 m

INDOOR COEFFICIENTS OF UTILIZATION

pf	20%																0%	
	pc	80%				70%				50%				30%				0%
pw	70%	50%	30%	10%	70%	50%	30%	10%	50%	30%	10%	50%	30%	10%	50%	30%	10%	0%
0	119	119	119	119	116	116	116	116	111	111	111	106	106	106	101	101	101	99
1	113	111	108	106	111	109	106	104	104	103	101	101	99	98	97	96	95	93
2	108	103	100	96	106	102	98	95	98	96	93	95	93	91	92	91	89	87
3	103	97	92	88	101	96	91	88	93	89	86	90	87	85	88	86	83	82
4	98	91	86	82	96	90	85	81	88	84	80	86	82	79	84	81	78	77
5	94	86	80	76	92	85	80	76	83	79	75	81	78	75	80	77	74	72
6	90	81	76	72	88	80	75	71	79	74	71	78	73	70	76	73	70	68
7	86	77	71	67	84	76	71	67	75	70	67	74	70	66	73	69	66	65
8	82	73	68	64	81	73	67	64	72	67	63	70	66	63	70	66	63	61
9	79	70	64	61	78	69	64	60	68	64	60	67	63	60	67	63	60	58
10	76	67	61	58	75	66	61	57	65	61	57	64	60	57	64	60	57	56