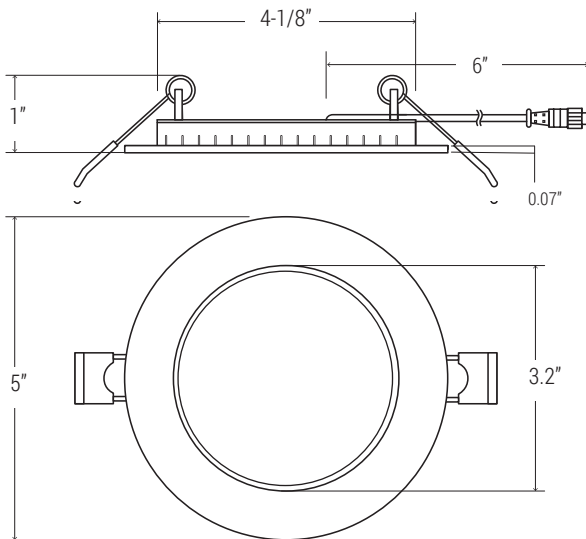
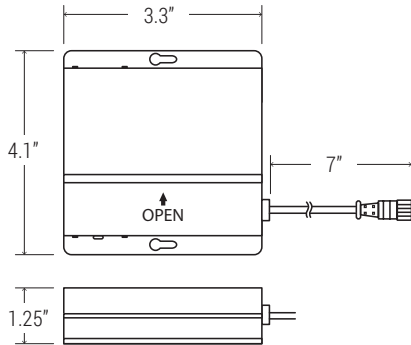




**EASY 3 COLORS
SELECCTOR**
3000K • 4000K • 5000K



NOMINAL LUMENS	DELIVERED LUMENS	WATTAGE
550	651	9W

Based on 4000K, 90+ CRI. Actual wattage may vary +/- 5%

INSTALLATION

Cut hole in ceiling. Insert luminaire into opening by squeezing spring clips on both sides of luminaire. The width in ceiling needed for the driver to fit is 3".

FEATURES

Ultra-thin 1" design fits into shallow plenum spaces and other below-the-ceiling applications. 4" round adjustable slim multi-CCT LED luminaire engineered for new construction, remodel, or retrofit to accommodate insulated or dropped ceilings. Easily access field-adjustable 3-Color SeleCCTor switch by lowering the luminaire from the opening. Remote driver allows easy installation and maintenance. Canless design eliminates need for bulky housing.

LUMENS	550
CCT	30K/40K/50K
CRI	90+
COLOR QUALITY	3-Step MacAdam Ellipse
CONSTRUCTION	Aluminum die-cast body and trim
TRIM OPTION	Round Adjustable
TRIM COLORS	WH (White), BK (Black)
BEAM ANGLE	10 Degree
DIMMING	DIMTR (Triac)
EMERGENCY	16W high voltage inverter (remote)
LIFETIME	L70 at 50,000 Hours
PHOTOMETRIC TESTS	In Accordance with IES LM79-08, LM80 and TM-30, TM-21

- IC-rated and Air-Tight ready and may be in direct contact with insulation.
- Can be installed in shallow plenum applications.
- Can be installed in drywall or suspended ceilings.
- Flicker-free forward-phase Triac dimming down to 5%.
- New construction rough-in plates and jumper cables available.

SLIM TRIM



EXAMPLE:

RL474-550L-DIMTR-120-30K/40K/50K-90-WH

TYPE	LUMEN	CCT	CRI	FINISH
RL474	<input type="checkbox"/> 550L-DIMTR-120	<input type="checkbox"/> 30K/40K/50K	<input type="checkbox"/> 90+	<input type="checkbox"/> WH - White <input type="checkbox"/> BK - Black

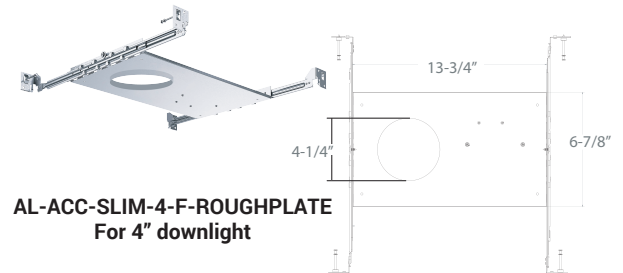
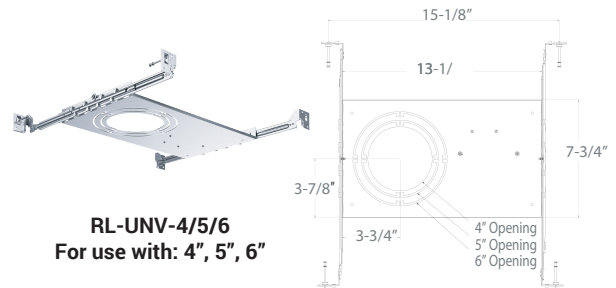
ACCESSORIES



RL-ACC-SLIM-1-10F
10-ft long extension



RL-ACC-SLIM-1-20F
20-ft long extension

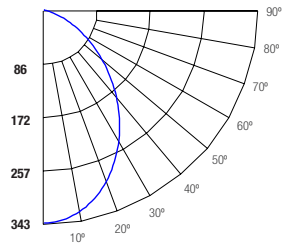


RL-ACC-SLIM-4-ROUGHPLATE
Rough-in plate for use with 4" downlights

RL-ACC-SLIM-1-10F

OPTIONS

- ☐ **RL-ACC-SLIM-1-10F** - 10ft Long Extension
- ☐ **RL-ACC-SLIM-1-20F** - 20ft Long Extension
- ☐ **RL-UNV-4/5/6** - Universal Mounting Plate for 4", 5" and 6"
- ☐ **RL-ACC-SLIM-4-ROUGHPLATE** - 4" Mounting Plate
- ☐ **AL-ACC-SLIM-4-F-ROUGHPLATE** - 4" Flanged Roughplate

RL474-550L-DIMTR-120-30K-40K-50K-90-WH
TEST NO.: EL103019125
INPUT WATTS: 9.13673
LUMENS: 652
CRI: 90
EFFICACY: 71
CCT: 4000K
SPACING CRITERIA: 1.18
Candle Power Distribution (Candelas)

Zonal Lumens Summary

Zone	Lumens	%Lamp	%Fixt
0-20	120.98	18.60	18.60
0-30	246.25	37.80	37.80
0-40	381.53	58.60	58.60
0-60	590.34	90.60	90.60
0-80	651.01	99.90	99.90
0-90	651.03	99.90	99.90

Luminance (Average candela/M²)

Angle in Degrees	Average 0°	Average 45°	Average 90°
45	73350	74463	77358
55	56021	57692	61243
65	35792	38376	42896
75	9628	13781	19746
85	79	79	79

Lumens Per Zone

Zone	Lumens
0-10	32.15
10-20	88.83
20-30	125.27
30-40	135.28
40-50	120.53
50-60	88.28
60-70	48.46
70-80	12.21
80-90	0.02

Candela Tabulation

Q	
0	343.05
5	339.33
15	314.33
25	269.59
35	212.60
45	151.52
55	93.87
65	44.19
75	7.28
85	0.02
90	0.02

Coefficients of Utilization - Zonal Cavity Method

Effective Floor Cavity Reflectance 0.20

Cone of Light			
2	85.8	3.7	3.7
4	21.4	7.3	7.3
6	9.53	11	11
8	5.36	14.6	14.7
10	3.43	18.3	18.4
12	2.38	22	22
(FT.) Distance to Plane	(FC.) Initial Footcandle at Nadir	(FT.) Beam Vert. Spread	(FT.) Beam Horiz. Spread

BEAM DIA. MEASURED AT 50% OF NADIR F.C.

	RC	80%				70%				50%				30%				10%				0%
	RW	70%	50%	30%	10%	70%	50%	30%	10%	50%	30%	10%	50%	30%	10%	50%	30%	10%	0%			
ROOM CAVITY RATIO	0	119	119	119	119	116	116	116	116	111	111	111	106	106	106	102	102	102	100			
	1	111	107	104	101	108	105	102	99	101	98	96	97	95	93	94	92	90	88			
	2	103	96	90	86	100	94	89	85	91	86	83	87	84	81	85	82	79	77			
	3	95	86	79	73	93	84	78	73	82	76	72	79	74	70	76	73	69	67			
	4	88	77	70	64	86	76	69	63	74	67	63	71	66	62	69	65	61	59			
	5	81	70	62	56	79	69	61	56	67	60	55	65	59	55	63	58	54	52			
	6	76	64	56	50	74	63	55	50	61	54	49	59	53	49	58	53	48	47			
	7	71	58	50	45	69	57	50	45	56	49	44	55	49	44	53	48	44	42			
	8	66	54	46	40	64	53	45	40	52	45	40	50	44	40	49	44	40	38			
	9	62	49	42	37	60	49	42	37	48	41	36	47	41	36	46	40	36	34			
	10	58	46	39	34	57	45	38	34	44	38	33	44	38	33	43	37	33	32			

RC - Ceiling Cavity Reflectance

RW - Wall Reflectance