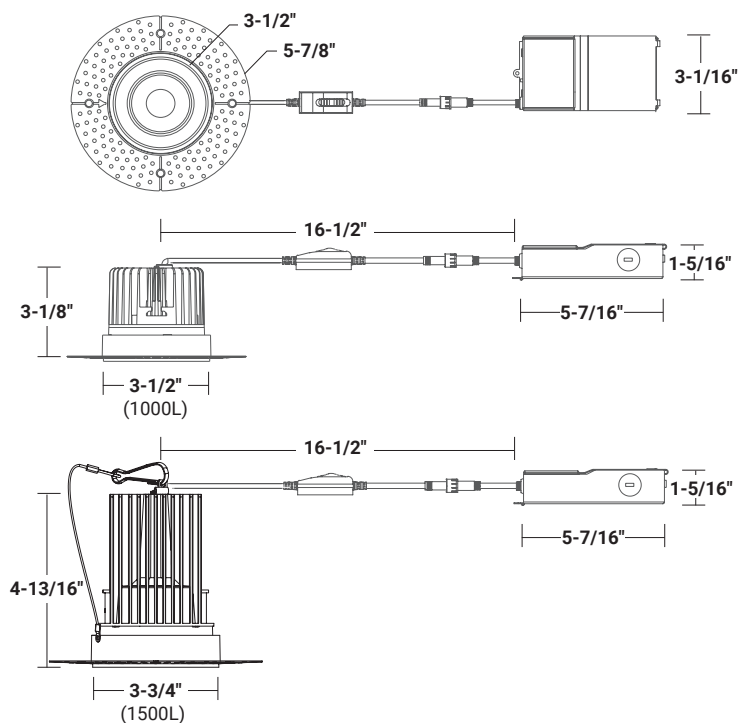




DIMENSIONS



NOMINAL LUMENS	DELIVERED LUMENS	WATTAGE
1000L	1349L	13W
1500L	1695L	17W

Based on 4000K, 90+ CRI. Actual wattage may vary +/- 5%

INSTALLATION

Cut hole in ceiling. Insert luminaire into opening by squeezing spring clips on both sides of luminaire. The width in ceiling needed for the driver to fit is 3".

For wet location application, you **MUST** seal all gaps between the ceiling and fixture with weatherproof silicone sealant. This deters moisture and water from damaging fixtures and other mechanical ceiling elements. Installation hole size: 3-3/4"

FEATURES

SEAMLESS INTEGRATION, RADIANT ILLUMINATION

This 4" canless downlight features a trimless, modular design for easy installation and a regressed lens and smooth reflector for a radiant, glare-free illumination. Engineered for new construction, remodel, or retrofit applications and accommodates insulated and dropped ceilings. Five selectable CCT allow for versatile atmospheres. Ideal for use in lobbies, showrooms, offices, living spaces, hallways, and studios in corporate, residential, commercial, retail healthcare and hospitality spaces. No housing or driver necessary. Wet location and IC rated.

LUMENS	1000L, 1500L
CCT	27K/30K/35K/40K/50K
CRI	90+ Standard
COLOR QUALITY	3-Step MacAdam Ellipse
MOUNTING	Recessed Trimless
DIMMING	DIMTR - 10% Triac Dimming
BEAM ANGLE	MD (Medium, 38°), ND (Narrow, 24°) and WD (Wide, 60°)
FINISH	White (W-WH)
WORKING TEMP.	-20°C (-4°F) to 40°C (104°F)
UGR	UGR<19
EMERGENCY	16W High Voltage Inverter (Remote)
LIFETIME	L70 at 50,000 Hours
PHOTOMETRIC	In accordance with IES LM79-08, LM80 and TM-30, TM-21

- Small aperture and shallow depth allow for unlimited applications.
- Wet location suitable.
- Airtight and IC rated for direct contact with insulation.
- Remote driver; no housing or jbox necessary.

OPTICS

Features a slightly regressed polycarbonate lens and smooth reflector for uniform, low-glare illumination.

Available in lumen packages of 1000L or 1500L and 5 selectable color temperatures of 2700K/3000K/3500K/4000K/5000K enable different warm to cool moods and atmospheres. CCT factory set to 5000K.

A CRI value of 90 guarantees vibrant, natural color display, while a 38° beam angle makes for a Medium (MD) distribution.

Additional 24° and 60° TIR optics available to order separately.

CONSTRUCTION

A durable, die-cast aluminum body allows for lightweight installation and thermal regulation. A twist and lock module design allows for easy mounting. A small aperture and shallow depth allow for unlimited applications.

Perforated mesh cover designed for a seamless drywall or plaster mud-in.

Remote steel driver/junction box included. Multi-CCT switch located on cord for remote driver.

Airtight, wet location and IC rated. Available in a white finish.

MAINTENANCE

Fixture can be regularly and safely wiped down to ensure optimal fixture performance.

MOUNTING

Suitable for recessed mounting. Recommended hole cut-out size is 3-3/4".

OPTIONS & ACCESSORIES

Available to order separately:

- 16W emergency battery back-up option
- Optional TIR optics: Narrow (ND) at 24° and Wide (WD) distribution at 60°

Extension cable options:

- **RL-ACC-SLIM-1-10F** (10-ft)
- **RL-ACC-SLIM-1-20F** (20-ft)

Rough Plate options:

- **RL-UNV-4/5/6** for use with 4", 5", and 6" downlights.
- **RL-UNV-1/2/3/4/5/6/8/10** - Universal Mounting Plate for 1", 2", 3", 4", 5", 6", 8" and 10" downlights
- **AL-ACC-SLIM-4-F-ROUGHPLATE** for use with 4" downlights
- **RL-ACC-SLIM-4-ROUGHPLATE** for use with 4" downlights

See order chart for details.

DRIVER & ELECTRICAL INFORMATION

Powered by high-quality constant-current power LED drivers which are rated for 50 to 60Hz at 120V-277V input, produce less than 20% THD, and have a power factor of .90 to 1.00.

DIMMING

DIMTR - 10% Triac dimming at 120V.

WARRANTY

5-year warranty for parts and components (labor not included).

LISTINGS

ETL listed.
Energy Star certified.
JA8 and Title 20 compliant.
Wet location suitable.
IC-Rated, air-tight ready, and may be in direct contact with insulation.

MULTI-CCT SWITCH



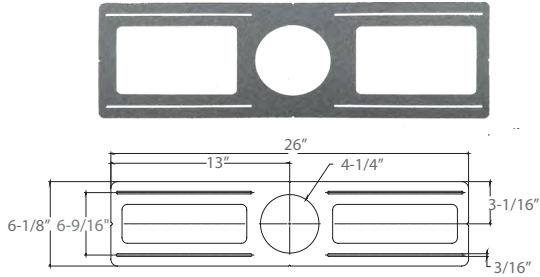
OPTION & ACCESSORIES



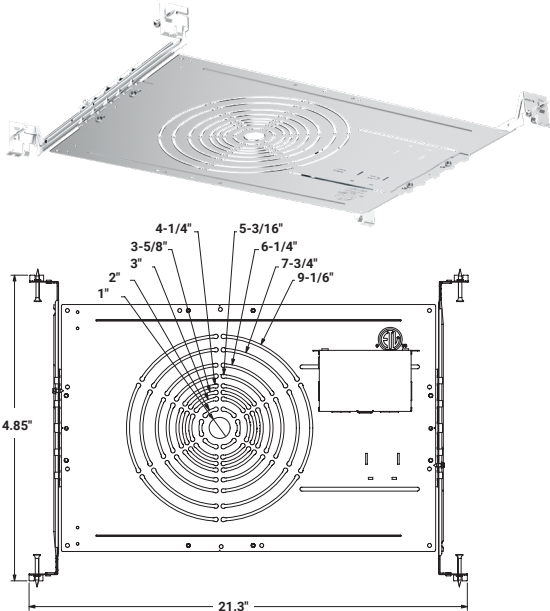
RL-ACC-SLIM-1-10F
10-ft long extension

RL-ACC-SLIM-1-20F
20-ft long extension

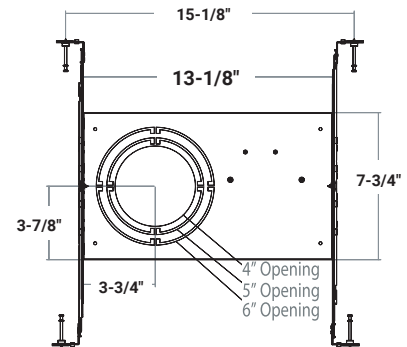
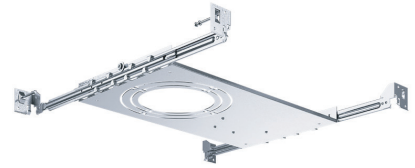
RL-ACC-SLIM-4-ROUGHPLATE
For 4" downlights



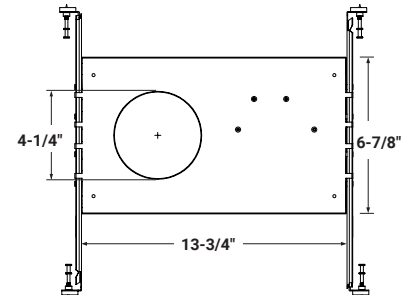
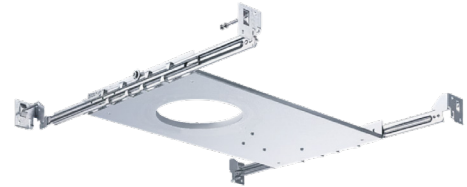
RL-UNV-1/2/3/4/5/6/8/10
For use with 1", 2", 3", 4", 5", 6", 8", and 10" downlights



RL-UNV-4/5/6
For use with 4", 5", and 6" downlights



AL-ACC-SLIM-4-F-ROUGHPLATE
For 4" downlights



Example: **RL471-TL-1000L-DIMTR-120-27K/30K/35K/40K/50K-90-W-WH**

SERIES	LUMENS	DIMMING	CCT	CRI	FINISH	TIR OPTICS	OPTION
RL471-TL	1000L 1500L	DIMTR/120 - Triac	27K/30K/35K/40K/50K	90	W-WH - White	ND (24°) MD (38°) - Included Standard WD (60°)	RL-ACC-SLIM-1-10F - 10-ft long extension RL-ACC-SLIM-1-20F - 20-ft long extension RL-UNV-4/5/6 - Universal Mounting Plate for 4", 5" and 6" RL-UNV-1/2/3/4/5/6/8/10 - Universal Mounting Plate for 1", 2", 3", 4", 5", 6", 8" and 10" AL-ACC-SLIM-4-F-ROUGHPLATE - 4" Flanged Roughplate RL-ACC-SLIM-4-ROUGHPLATE - 4" Mounting Plate O-EMG-LED-16W-FLEX - 16W Emergency Back up (Remote)

RL471-TL-1000L-DIMTR-120-27K-30K-35K-40K-50K-90-W-WH

TEST NO.: **EL11192536**

INPUT WATTS: **12.8**

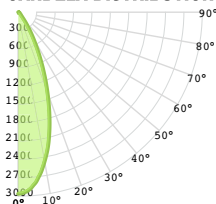
LUMENS: **1349**

EFFICACY: **105**

BEAM ANGLE: **37**

SPACING CRITERIA: **0.62**

CANDELA DISTRIBUTION



CANDELA TABLE

	0°	90°
0°	2959	2959
10°	2468	2390
20°	1387	1302
30°	479	440
40°	90	77
50°	41	38
60°	22	21
70°	9	9
80°	4	3
90°	0	0

LUMINANCE (cd/sq.m)

	0.00°	90.00°
0.00°	619334	619334
45.00°	16756	15080
55.00°	11031	10467
65.00°	7580	7125
75.00°	4964	4735
85.00°	3773	2787

LUMENS PER ZONE

ZONE	LUMENS
0° - 10°	255
10° - 20°	506
20° - 30°	363
30° - 40°	127
40° - 50°	41
50° - 60°	26
60° - 70°	14
70° - 80°	6
80° - 90°	2

ZONAL LUMEN SUMMARY

ZONE	LUMENS	% LUMINAIRE
0° - 20°	762	56%
0° - 30°	1125	83%
0° - 40°	1251	93%
0° - 60°	1318	98%
0° - 80°	1338	99%
0° - 90°	1340	99%

CONE OF LIGHT

MOUNTING HEIGHT	FC AT BEAM CENTER	BEAM DIA. 0° -180°	BEAM DIA. 90° -270°
6.0 m	82.2 lx	4.0 m	3.9 m
8.0 m	46.2 lx	5.3 m	5.2 m
10.0 m	29.6 lx	6.6 m	6.5 m
12.0 m	20.6 lx	8.0 m	7.8 m
14.0 m	15.1 lx	9.3 m	9.1 m
16.0 m	11.6 lx	10.6 m	10.4 m
18.0 m	9.1 lx	12.0 m	11.7 m
20.0 m	7.4 lx	13.3 m	13.0 m

INDOOR COEFFICIENTS OF UTILIZATION

pf pc pw	20%																		0%	
	80%				70%				50%				30%				10%			
	70%	50%	30%	10%	70%	50%	30%	10%	50%	30%	10%	50%	30%	10%	50%	30%	10%	0%		
0	119	119	119	119	116	116	116	116	111	111	111	106	106	106	101	101	101	99		
1	114	111	109	107	111	109	107	105	105	103	102	101	100	98	97	96	96	94		
2	109	104	101	97	106	102	99	96	99	96	94	96	94	92	93	92	90	88		
3	104	98	94	90	102	97	93	89	94	91	88	92	89	86	89	87	85	83		
4	100	93	88	84	98	92	87	84	89	86	82	87	84	81	86	83	80	79		
5	95	88	83	79	94	87	82	79	85	81	78	84	80	77	82	79	76	75		
6	92	84	78	75	90	83	78	74	81	77	74	80	76	73	79	75	73	71		
7	88	80	74	71	87	79	74	70	78	73	70	77	73	70	75	72	69	68		
8	84	76	71	67	83	76	71	67	74	70	67	73	69	66	72	69	66	65		
9	81	73	68	64	80	72	67	64	71	67	64	71	66	64	70	66	63	62		
10	78	70	65	61	77	69	65	61	69	64	61	68	64	61	67	63	61	60		

RL471-TL-1500L-DIMTR-120-27K-30K-35K-40K-50K-90-W-WH

TEST NO.: **EL11192536**

INPUT WATTS: **16.8**

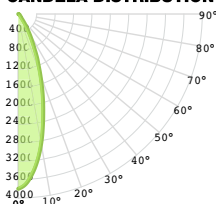
LUMENS: **1695**

EFFICACY: **101**

BEAM ANGLE: **35**

SPACING CRITERIA: **0.53**

CANDELA DISTRIBUTION



CANDELA TABLE

	0°	90°
0°	3798	3798
10°	2863	3020
20°	1395	1536
30°	461	514
40°	94	93
50°	50	53
60°	27	30
70°	11	12
80°	4	5
90°	0	0

LUMINANCE (cd/sq.m)

	0.00°	90.00°
0.00°	794833	794833
45.00°	19122	20104
55.00°	13218	14747
65.00°	8928	10057
75.00°	6169	6577
85.00°	4041	3275

LUMENS PER ZONE

ZONE	LUMENS
0° - 10°	325
10° - 20°	630
20° - 30°	446
30° - 40°	161
40° - 50°	55
50° - 60°	35
60° - 70°	19
70° - 80°	9
80° - 90°	2

ZONAL LUMEN SUMMARY

ZONE	LUMENS	% LUMINAIRE
0° - 20°	956	56%
0° - 30°	1402	83%
0° - 40°	1563	92%
0° - 60°	1653	98%
0° - 80°	1681	99%
0° - 90°	1683	99%

CONE OF LIGHT

MOUNTING HEIGHT	FC AT BEAM CENTER	BEAM DIA. 0° -180°	BEAM DIA. 90° -270°
6.0 m	105.5 lx	3.8 m	3.8 m
8.0 m	59.3 lx	5.1 m	5.1 m
10.0 m	38.0 lx	6.4 m	6.4 m
12.0 m	26.4 lx	7.7 m	7.6 m
14.0 m	19.4 lx	8.9 m	8.9 m
16.0 m	14.8 lx	10.2 m	10.2 m
18.0 m	11.7 lx	11.5 m	11.5 m
20.0 m	9.5 lx	12.8 m	12.7 m

INDOOR COEFFICIENTS OF UTILIZATION

pf	20%																		0%		
pc	80%				70%				50%				30%				10%				0%
pw	70%	50%	30%	10%	70%	50%	30%	10%	50%	30%	10%	50%	30%	10%	50%	30%	10%	0%			
0	119	119	119	119	116	116	116	116	111	111	111	106	106	106	106	101	101	99			
1	114	111	109	107	111	109	107	105	105	103	102	101	100	98	97	96	95	94			
2	109	104	100	97	106	102	99	96	99	96	94	96	94	92	93	91	90	88			
3	104	98	94	90	102	97	92	89	94	90	88	91	89	86	89	87	85	83			
4	99	93	88	84	98	91	87	83	89	85	82	87	84	81	85	83	80	79			
5	95	88	83	79	94	87	82	78	85	81	78	83	80	77	82	79	76	75			
6	91	83	78	74	90	83	78	74	81	77	74	80	76	73	78	75	72	71			
7	88	80	74	70	86	79	74	70	78	73	70	76	72	69	75	72	69	68			
8	84	76	71	67	83	75	70	67	74	70	67	73	69	66	72	69	66	65			
9	81	73	67	64	80	72	67	64	71	67	64	70	66	63	70	66	63	62			
10	78	70	65	61	77	69	64	61	68	64	61	68	64	61	67	63	61	59			