

NOMINAL LUMENS	DELIVERED LUMENS	WATTAGE
600	632	8W
1000	1015	14W

Based on 3000K, 90+ CRI. Actual wattage may vary +/- 5%

INSTALLATION

Cut hole in ceiling. Insert luminaire into opening by squeezing spring clips on both sides of luminaire. The width in ceiling needed for the driver to fit is 3".

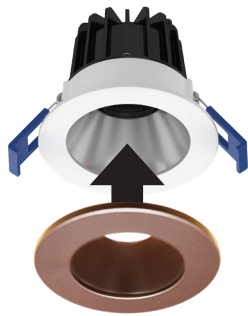
FEATURES

2" LED luminaire with field-changeable reflector engineered for new construction, remodel or retrofit to accommodate insulated or dropped ceilings. Remote driver allows easy installation and maintenance. Small aperture and shallow depth are ideal for unlimited applications.

LUMENS	600, 1000
CCT	27K, 30K, 35K, 40K
CRI	90+
COLOR QUALITY	3-Step MacAdam Ellipse
CONSTRUCTION	Aluminum die-cast body and trim
TRIM OPTION	Round Reflector
TRIM COLORS	WH (White-standard) BZ (Bronze), BK (Black), CP (Copper), SN (Satin Nickel)
TRIM COLORS	WH (White-standard) BZ (Bronze), BK (Black), CP (Copper), SN (Satin Nickel)
DIMMING	DIMTR (Triac)
EMERGENCY	16W high voltage inverter (remote)
LIFETIME	L70 at 50,000 Hours
PHOTOMETRIC TESTS	In Accordance with IES LM79-08, LM80 and TM-30, TM-21

- IC-Rated and Air-Tight ready and may be in direct contact with insulation.
- Can be installed in applications with limited plenum clearance.
- May be installed in drywall or suspended ceilings.
- Flicker-free 120V forward-phase Triac dimming down to 5%.
- Even illumination of luminaire is achieved by utilizing patent-pending optics along with edgelit LED technology.
- Aluminum die-cast body and trim.

SLIM TRIM



TRIM RING

TRIM RINGS



RL271-RT-W-WH
White-White



RL271-RT-SN-SN
Satin Nickel-Satin Nickel



RL271-RT-MB-BK
Black-Black



RL271-RT-MB-WH
Black-White



RL271-RT-BZ-BZ
Bronze-Bronze



RL271-RT-CP-CP
Copper-Copper

RL271-RT-BZ-BZ

INSERTS

- ☐ RL271-RT-BZ-BZ-Bronze
- ☐ RL271-RT-CP-CP-Copper
- ☐ RL271-RT-MB-BK-Black
- ☐ RL271-RT-SN-SN-Satin Nickel
- ☐ RL271-RT-MB-WH-Black/White
- ☐ RL271-RT-W-WH-White/White

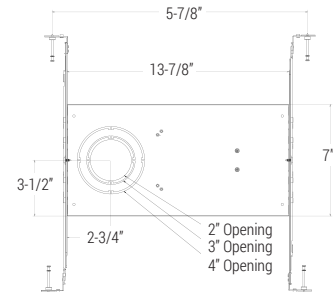
ACCESSORIES



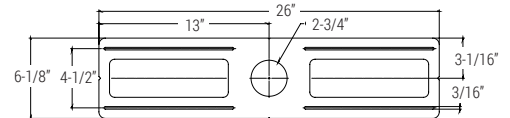
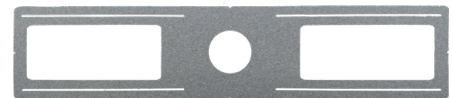
RL-ACC-SLIM-1-10F
10-ft long extension



RL-ACC-SLIM-1-20F
20-ft long extension



RL-UNV-2/3/4
For use with: 2", 3", 4"
Universal mounting plate



RL-ACC-SLIM-2-ROUGHPLATE
Rough-in plate for use with 2" downlights

RL-ACC-SLIM-1-10F

OPTIONS

- ☐ RL-ACC-SLIM-1-10F - 10ft Long Extension
- ☐ RL-ACC-SLIM-1-20F - 20ft Long Extension
- ☐ RL-UNV-2/3/4 - Universal Mounting Plate for 2", 3" and 4" (only for 600L)
- ☐ RL-ACC-SLIM-2-ROUGHPLATE - 2" Mounting Plate

EXAMPLE: RL271-600L-DIMTR-120-30K-90-WH

TYPE	LUMEN	CCT	CRI	FINISH
RL271	<input type="checkbox"/> 1000L-DIMTR-120 <input type="checkbox"/> 600L-DIMTR-120	<input type="checkbox"/> 27K <input type="checkbox"/> 30K <input type="checkbox"/> 35K <input type="checkbox"/> 40K	<input type="checkbox"/> 90+	<input type="checkbox"/> SHZ-WH Satin Haze/White (Standard)

RL271-600L-DIMTR-120-30K-90-SHZ-WH

INPUT WATTS: **8.1493**

LUMENS: **632**

CRI: **90**

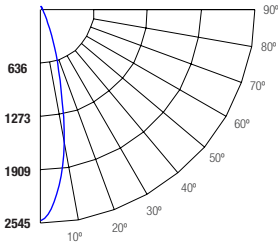
EFFICACY: **78**

CCT: **3000K**

TEST NO.: **EL08051928**

SPACING CRITERIA: **0.46**

Candle Power Distribution (Candelas)



Zonal Lumens Summary

Zone	Lumens	%Lamp	%Fixt
0-20	507.00	80.30	80.30
0-30	608.17	96.30	96.30
0-40	623.82	98.80	98.80
0-60	629.33	99.60	99.60
0-80	630.92	99.90	99.90
0-90	630.93	99.90	99.90

Luminance (Average candela/M²)

Angle in Degrees	Average 0°	Average 45°	Average 90°
45	23	28	42
55	12	13	14
65	10	11	12
75	12	14	15
85	1	1	1

Lumens Per Zone

Zone	Lumens
0-10	206.52
10-20	300.48
20-30	101.17
30-40	15.65
40-50	4.11
50-60	1.40
60-70	0.95
70-80	0.63
80-90	0.02

Candela Tabulation

0	0
0	2521.07
5	2216.71
15	902.76
25	132.03
35	16.46
45	3.56
55	1.51
65	0.89
75	0.65
85	0.01
90	0.01

Coefficients of Utilization - Zonal Cavity Method
Effective Floor Cavity Reflectance 0.20

RC	80%				70%				50%				30%				10%				0%
RW	70%	50%	30%	10%	70%	50%	30%	10%	50%	30%	10%	50%	30%	10%	50%	30%	10%	50%	30%	10%	0%
0	119	119	119	119	116	116	116	116	111	111	111	106	106	106	102	102	102	100	100	100	100
1	115	113	111	109	113	111	109	107	107	105	104	103	102	101	100	99	98	96	96	96	96
2	111	108	105	102	109	106	103	101	103	101	99	100	98	97	97	96	95	93	91	90	90
3	108	103	99	96	106	102	98	96	99	96	94	97	95	93	95	93	91	88	87	87	87
4	104	99	95	92	103	98	94	91	91	89	87	94	91	89	92	90	88	85	84	84	84
5	101	95	91	88	100	94	91	88	93	89	87	91	88	86	90	87	85	82	80	79	79
6	98	92	88	85	97	91	87	84	90	86	84	89	86	83	87	85	83	82	80	78	78
7	95	89	85	82	94	88	84	82	87	84	81	86	83	81	85	82	80	78	77	77	77
8	93	86	82	79	92	86	82	79	85	81	79	84	81	78	83	80	78	77	76	75	75
9	90	84	79	77	89	83	79	77	82	79	76	82	78	76	81	78	76	75	74	73	73
10	88	81	77	74	87	81	77	74	80	77	74	79	76	74	79	76	74	73	72	71	71

RC - Ceiling Cavity Reflectance

RW - Wall Reflectance

RL271-1000L-DIMTR-120-30K-90-SHZ-WH

INPUT WATTS: **14.3777**

LUMENS: **1015**

CRI: **90**

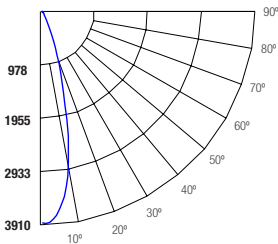
EFFICACY: **71**

CCT: **3000K**

TEST NO.: **EL10061928**

SPACING CRITERIA: **0.48**

Candle Power Distribution (Candelas)



Zonal Lumens Summary

Zone	Lumens	%Lamp	%Fixt
0-20	817.08	80.50	80.50
0-30	979.37	96.50	96.50
0-40	1002.66	98.80	98.80
0-60	1011.56	99.60	99.60
0-80	1014.27	99.90	99.90
0-90	1014.29	99.90	99.90

Luminance (Average candela/M²)

Angle in Degrees	Average 0°	Average 45°	Average 90°
45	2672	3364	4207
55	1761	1862	1814
65	1515	1701	1725
75	1852	2195	2209
85	39	39	39

Lumens Per Zone

Zone	Lumens
0-10	329.22
10-20	487.85
20-30	162.29
30-40	23.29
40-50	6.48
50-60	2.42
60-70	1.63
70-80	1.08
80-90	0.02

Candela Tabulation

0	0
0	3902.58
5	3552.40
15	1334.98
25	134.96
35	24.67
45	5.52
55	2.95
65	1.87
75	1.40
85	0.01
90	0.01

Coefficients of Utilization - Zonal Cavity Method
Effective Floor Cavity Reflectance 0.20

RC	80%				70%				50%				30%				10%				0%
RW	70%	50%	30%	10%	70%	50%	30%	10%	50%	30%	10%	50%	30%	10%	50%	30%	10%	50%	30%	10%	0%
0	119	119	119	119	116	116	116	116	111	111	111	106	106	106	102	102	102	100	100	100	100
1	115	113	111	109	113	111	109	107	107	105	104	103	102	101	100	99	98	96	96	96	96
2	111	108	105	102	109	106	103	101	103	101	99	100	98	97	97	96	95	93	91	90	90
3	108	103	99	96	106	102	98	96	99	96	94	97	95	93	95	93	91	88	87	87	87
4	104	99	95	92	103	98	94	91	91	89	87	94	91	89	92	90	88	85	84	84	84
5	101	95	91	88	100	94	91	88	93	89	87	91	88	86	90	87	85	82	80	79	79
6	98	92	88	85	97	91	87	84	90	86	84	89	86	83	87	85	83	82	80	78	78
7	95	89	85	82	94	88	84	82	87	84	81	86	83	81	85	82	80	78	77	77	77
8	93	86	82	79	92	86	82	79	85	81	79	84	81	78	83	80	78	77	76	75	75
9	90	84	79	77	89	83	79	77	82	79	76	82	78	76	81	78	76	75	74	73	73
10	88	81	77	74	87	81	77	74	80	77	74	79	76	74	79	76	74	73	72	71	71

RC - Ceiling Cavity Reflectance

RW - Wall Reflectance