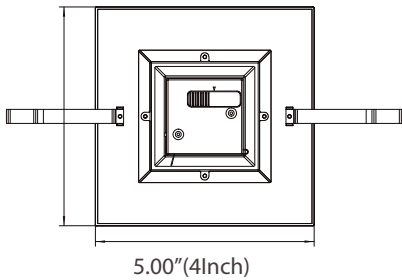
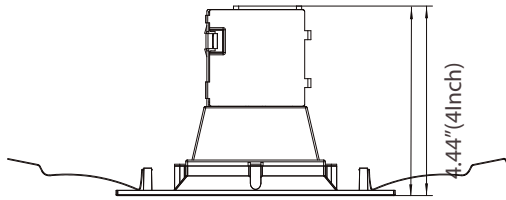
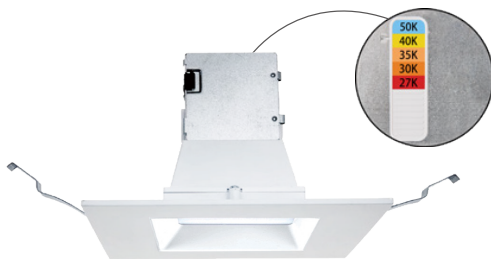


EASY 5 COLORS
SELECCTOR
2700K • 3000K • 3500K • 4000K • 5000K



NOMINAL LUMENS	DELIVERED LUMENS	WATTAGE
700	896	10W

Based on 3000K, 90+ CRI. Actual wattage may vary +/- 5%



INSTALLATION

You **MUST** seal all gaps between the ceiling and fixture with weatherproof silicone sealant. This deters moisture and water from damaging fixtures and other mechanical ceiling elements.

FEATURES

The RJL Quick Fit downlight combines a residential remodel can plus a trim in one fixture. The driver and junction box are integral to the fixture and the Quick Fit does not require a recessed housing for installation, making it ideal for applications where ceiling or top access is not available to service these luminaires. An easy 5-Color SeleCCTor switch allows the contractor to easily switch between color temperatures in the field. The Quick Fit is ideal for new construction or remodel applications including hospitality, retail, light commercial, and high-end residential.

LUMENS	700
CCT	27K/30K/35K/40K/50K
CRI	90+
COLOR QUALITY	3 Step MacAdam Ellipses
TRIM	Aluminum die-cast body and trim
REFLECTOR COLORS	WH (White)
FLANGE COLORS	W (White)
DIMMING	DIMTR (Triac)
LIFETIME	L70 at 50,000 Hours
EMERGENCY	16W high voltage inverter (Installed into the housing)*
PHOTOMETRIC TESTS	In Accordance with IES LM79-08, LM80 and TM-30, TM-21

* Consult Factory

EASE OF INSTALLATION

Quick Fits are provided with two captive torsion springs tailored to fit in most residential housings. The Quick Fit is secured in place onto the ceiling by two retention springs and can easily be removed from the ceiling to allow for driver access. An NEC-rated junction box and driver allow for daisy-chain and feed-through wiring. Quick Fits come standard with quick connectors ready for installation.

OPTICS

Backlit LEDs are deeply regressed and shielded by a frosted diffuser lens, providing glare-free, even illumination.

CONSTRUCTION

Die-cast aluminum body for maximum heat dissipation.

EASY 5-COLOR SELECCTOR SWITCH

Easy 5-Color SeleCCTor switch can be adjusted to a choice of 5 different Kelvin color temperatures in the field. Options include 27K/30K/35K/40K/50K. The SeleCCTor switch is located on the junction box for easy adjustment before and after installation. The SeleCCTor switch is easily accessible by lowering the luminaire from the opening.

FLEXIBILITY – MULTIPLE APERTURES, TRIM TYPES AND FINISHES

Quick Fit is available in 4", 5", 6", and 8" in round and square apertures. Trim options include reflector, baffle, and adjustable in round or square. Product is shipped standard with white finish and available in a variety of trim rings that are field-installable (Black, Satin Nickel, Copper, and Bronze) for maximum design flexibility.

NO HOUSING REQUIRED FOR INSTALLATION

Quick Fit can be installed in the ceiling without a recessed housing. A cut-out template sticker is provided for ease of installation.

DRIVER ELECTRICAL INFORMATION

Driver is rated for 50 to 60Hz at 120V input, produces less than 20% THD, has a power factor between 90% and 100%, and is thermally protected for additional safety.

DIMMING & DRIVER INFORMATION

DIMTR - Triac & electronic low voltage (DIMTR-120) dimming. Available in 120V. Dimmable down to 10% of initial lumens, standard.

APPLICATIONS

Damp and wet-location-rated ideal for indoor and outdoor use, shower, and other wet-location applications. IC-Rated and Air Tight and may be installed in direct contact with insulation.

WARRANTY

Five-year warranty for parts and components. (Labor not included)

LISTINGS

Energy Star
cETLus
Title 24
JA8
JA8
RoHS
IECC
New York State

EXAMPLE: RJL485-700L-DIMTR-120-30K-90-W-WH

TYPE	LUMEN	CCT	CRI	FINISH
RJL485	700L-DIMTR-120	27K/30K/35K/40K/50K	90+	W-WH-White

RJL485-700L-DIMTR-120-27K/30K/35K/40K/50K-90-W-WH

INPUT WATTS: **9.6**

LUMENS: **896**

CRI: **90**

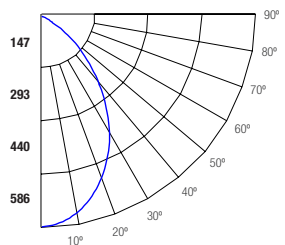
EFFICACY: **93**

CCT: **27K**

TEST NO.: **EL07092023**

SPACING CRITERIA: **1.12**

Candle Power Distribution (Candelas)



Zonal Lumens Summary

Zone	Lumens	%Lamp	%Fixt
0-20	204.54	22.80	22.80
0-30	410.41	45.80	45.80
0-40	618.59	69.10	69.10
0-60	868.04	96.90	96.90
0-80	894.31	99.90	99.90
0-90	894.36	99.90	99.90

Luminance (Average candela/M²)

Angle in Degrees	Average 0°	Average 45°	Average 90°
45	95197	100899	103823
55	52267	57041	60288
65	13251	17042	18605
75	794	992	251
85	196	196	79

Lumens Per Zone

Zone	Lumens
0-10	54.78
10-20	149.76
20-30	205.87
30-40	208.18
40-50	161.81
50-60	87.64
60-70	24.07
70-80	2.20
80-90	0.06

Candela Tabulation

0	0
0	585.83
5	577.92
15	528.04
25	440.11
35	319.51
45	196.65
55	87.58
65	16.36
75	0.60
85	0.05
90	0.06

Coefficients of Utilization - Zonal Cavity Method

Effective Floor Cavity Reflectance 0.20

RC	70%	50%	30%	10%	70%	50%	30%	10%	50%	30%	10%	50%	30%	10%	50%	30%	10%	0%
0	119	119	119	119	116	116	116	116	111	111	111	106	106	106	102	102	102	100
1	112	109	106	103	110	107	104	101	102	100	98	99	97	95	95	94	92	91
2	105	99	94	90	102	97	92	89	94	90	87	91	87	85	88	85	83	81
3	98	90	84	79	96	88	83	78	86	81	77	83	79	75	81	77	74	72
4	91	82	75	70	89	81	74	69	78	73	68	76	71	67	74	70	67	65
5	85	75	68	62	83	74	67	62	72	66	61	70	65	61	68	64	60	58
6	80	69	61	56	78	68	61	56	66	60	55	65	59	55	63	58	54	53
7	75	63	56	51	73	62	56	51	61	55	50	60	54	50	58	53	50	48
8	70	58	51	46	69	58	51	46	57	50	46	55	50	46	54	49	45	44
9	66	54	47	42	65	54	47	42	53	46	42	52	46	42	51	46	42	40
10	62	51	44	39	61	50	43	39	49	43	39	48	43	39	47	42	39	37

RC - Ceiling Cavity Reflectance

RW - Wall Reflectance

Beam Dia.	Beam Dia.	Beam Dia.	Beam Dia.
2	203 fc	2.7 ft	2.7 ft
4	53.8 fc	5.2 ft	5.2 ft
6	23.4 fc	7.8 ft	7.8 ft
8	13.1 fc	10.5 ft	10.5 ft
10	8.5 fc	13 ft	13 ft
12	5.86 fc	15.6 ft	15.6 ft

BEAM DIA. MEASURED AT 50% OF NADIR F.C.