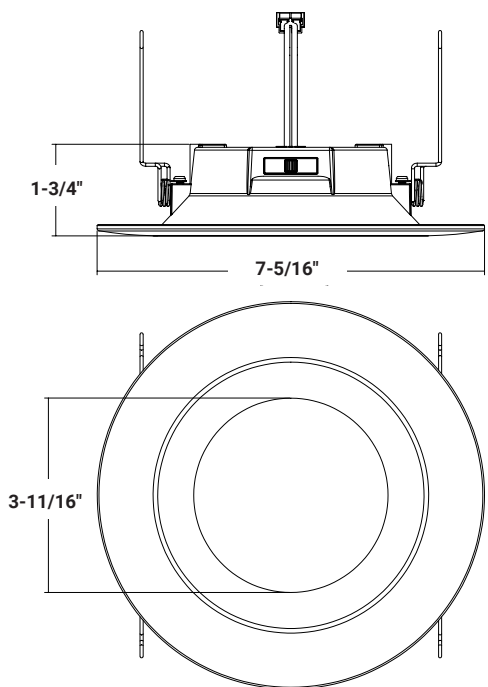


EASY 5 COLORS  
**SELECCTOR**  
2700K • 3000K • 3500K • 4000K • 5000K



## DIMENSIONS



**Recommended Hole Cut-out Size: 6-1/4"**



NOMINAL LUMENS	DELIVERED LUMENS	WATTAGE
900L	897L	10W

Based on 4000K, 90+ CRI. Actual wattage may vary +/- 5%

## FEATURES

### UPGRADE BEYOND CONVENIENCE

This 6" retrofit downlight takes retrofit and new construction projects beyond convenience for versatile, effective, and stunning illumination. A compact profile and smooth reflector make for a glare-free, modern look and accommodates low plenum spaces and shallow housing options. Preinstalled clips and an included E26 base adapter allow for quick and easy installation. TRIAC dimming and selectable CCT allow for variety in ambiance. Recess mountable and available in 900L and compatible with 6" IC and non-IC rated housings.

Ideal for bedrooms, bathrooms, hallways and similar applications in residential spaces. Wet location suitable.

LUMENS	900L
CCT	27K/30K/35K/40K/50K
CRI	90+ Standard
COLOR QUALITY	4-Step MacAdam Ellipse
MOUNTING	Recessed
DIMMING	DIMTR - 10% Triac Dimming at 120V
TRIM COLORS	White (WH) Standard only
WORKING TEMP.	-20°C (-4°F) to 40°C (104°F)
DISTRIBUTION	Very wide (95°, VWD)
VOLTAGE	120V
EMERGENCY	15W High Voltage Inverter (Field install)
LIFETIME	L70 at 50,000 Hours
PHOTOMETRIC	In accordance with IES LM79-08, LM80 and TM-30, TM-21



### OPTICS

Features a regressed frosted polycarbonate lens and smooth reflector for gentle, low glare, illumination.

5 selectable CCT options of 27K/30K/35K/40K/50K allow for selectable warm to cool color atmospheres.

Available in 900L CCT factory set to 5000K.

### CONSTRUCTION

Housing made from a UV treated non-corrosive plastic for durability.

E26 adapter base and pre-installed clips included for fast and easy installation.

CCT switch located on side of luminaire back.

### MAINTENANCE

Fixture can be wiped down with a dry or damp cloth for optimal performance.

### MOUNTING & INSTALLATION

Suitable for recessed retrofit mounting. Can be installed in shallow plenum spaces; ideal where ceiling or top access is unavailable.

May be installed in drywall or suspended ceilings. Compatible with a variety of IC and non IC rated 6" recessed housing options.

### OPTIONS & ACCESSORIES

Available to order separately with various IC and non IC rated housing options.

- **O-EMG-LED-15W-FLEX** (Remote) - 15W High voltage emergency inverter battery back-up available with a remote mounted test switch.

See order chart for details.

### DRIVER & ELECTRICAL INFORMATION

Powered by high-quality constant-current LED drivers which are rated for 50 to 60Hz at 120V input, produce less than 20% THD, and have a power factor of .90 to 1.00.

### DIMMING

DIMTR - Flicker 10% TRIAC Dimming at 120V.

### WARRANTY

5-year warranty for parts and components (labor not included).

### LISTINGS

UL listed.  
Energy Star certified.  
Wet location suitable.  
JA8 and Title 24 Compliant.

Suitable for use in closet storage spaces when installed in accordance with NFPA-70 and NEC 410.16 spacing requirements; Recommended spacing for recessed LED luminaires is 6 inches (150 mm).

### REL636-900L-DIMTR-120-27K/30K/35K/40K/50K-90-W-WH

SERIES	LUMENS	DIMMING	CCT	CRI	FINISH
REL636	900L	DIMTR-120	27K/30K/35K/40K/50K	90	W-WH - White (standard)

### GU24SA

#### ACCESSORIES

**GU24SA** - Socket for LED Retrofit to GU24



**O-EMG-LED-15W-FLEX** - 15W Emergency Back up (Remote)

### LD6IC-AT-DIMTR-120

#### COMPATIBLE ELITE LIGHTING HOUSINGS

 <p><b>LD6IC-AT-DIMTR-120</b> - 6" New Construction IC Housing</p>	 <p><b>LD6RIC-DIMTR-120</b> - 6" Remodel IC Housing</p>	 <p><b>B6IC-AT-W</b> - 6" Incandescent Air-shut IC Housing with WAGO Connector</p>	 <p><b>B6R-AT-W</b> - 4" Incandescent Air-shut Remodel Housing with WAGO Connector</p>
 <p><b>CLD6IC-AT-DIMTR-120</b> - 6" New Construction IC Housing</p>	 <p><b>CLD6RIC-AT-DIMTR-120</b> - 6" Remodel IC Housing</p>		

**REL636-900L-DIMTR-120-27K-30K-35K-40K-50K-90-W-WH**

TEST NO.: **EL11262478**

INPUT WATTS: **9.3**

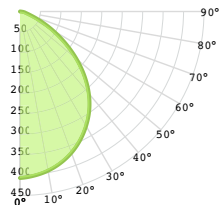
LUMENS: **897**

EFFICACY: **96**

BEAM ANGLE: **96**

SPACING CRITERIA: **1.18**

**CANDELA DISTRIBUTION**



**CANDELA TABLE**

	0°	90°
0°	407	407
10°	395	408
20°	368	382
30°	323	339
40°	262	279
50°	180	198
60°	93	107
70°	29	36
80°	11	12
90°	0	0

**LUMINANCE (cd/sq.m)**

	0.00°	90.00°
0.00°	22320	22320
45.00°	17272	18654
55.00°	12926	14547
65.00°	7202	8701
75.00°	3412	4058
85.00°	2529	3937

**LUMENS PER ZONE**

ZONE	LUMENS
0° - 10°	41
10° - 20°	109
20° - 30°	162
30° - 40°	188
40° - 50°	178
50° - 60°	129
60° - 70°	63
70° - 80°	21
80° - 90°	6

**ZONAL LUMEN SUMMARY**

ZONE	UMENS	% LUMINAIRE
0° - 20°	150	17%
0° - 30°	312	35%
0° - 40°	500	56%
0° - 60°	806	90%
0° - 80°	890	99%
0° - 90°	896	100%

**CONE OF LIGHT**

MOUNTING HEIGHT	FC AT BEAM CENTER	BEAM DIA. 0° -180°	BEAM DIA. 90° -270°
6.0 ft	11.3 fc	13.3 ft	13.6 ft
8.0 ft	6.4 fc	17.7 ft	18.1 ft
10.0 ft	4.1 fc	22.1 ft	22.6 ft
12.0 ft	2.8 fc	26.6 ft	27.2 ft
14.0 ft	2.1 fc	31.0 ft	31.7 ft
16.0 ft	1.6 fc	35.4 ft	36.2 ft
18.0 ft	1.3 fc	39.8 ft	40.7 ft
20.0 ft	1.0 fc	44.3 ft	45.3 ft

**INDOOR COEFFICIENTS OF UTILIZATION**

pf pc pw	20%																		0%
	80%				70%				50%				30%				10%		0%
	70%	50%	30%	10%	70%	50%	30%	10%	50%	30%	10%	50%	30%	10%	50%	30%	10%	0%	
0	119	119	119	119	116	116	116	116	111	111	111	106	106	106	102	102	102	100	
1	111	107	103	100	108	105	101	98	100	98	95	96	94	92	93	91	90	88	
2	102	95	89	84	100	93	88	83	90	85	81	87	83	80	84	81	78	76	
3	94	85	78	72	92	83	77	71	81	75	70	78	73	69	75	71	68	66	
4	87	76	68	62	85	75	68	62	73	66	61	70	65	60	68	63	60	58	
5	80	69	61	55	78	68	60	54	66	59	54	64	58	53	62	57	53	51	
6	75	62	54	48	73	61	54	48	60	53	48	58	52	47	57	51	47	45	
7	69	57	49	43	68	56	48	43	55	48	43	53	47	42	52	46	42	40	
8	65	52	44	39	63	52	44	39	50	43	38	49	43	38	48	42	38	36	
9	61	48	40	35	59	47	40	35	46	40	35	45	39	35	44	39	35	33	
10	57	44	37	32	56	44	37	32	43	36	32	42	36	32	41	36	32	30	