



SUGGESTED USE

For areas where Type III distribution is required and/or Dark Sky security and facade lighting is required such as industrial buildings, universities, schools, apartment buildings, institutions, and government establishments.

CONSTRUCTION

Die-cast aluminum housing with hinged full cut-off front frame. The one-piece silicone gasket effectively limits outside contaminants by sealing off the optical chamber. The reflector is made of die-formed 95% specular anodized aluminum for high efficiency and Type II distribution. HID & HPS fixtures have porcelain 4KV pulse-rated medium-base socket with nickel-plated screw shell sockets. CFL fixtures have 4-pin plug-in base and standard ballast of minimum starting temperature of 0°F/-18°C. Extreme temperature ballast (XT) with -20°F/-30°C is available.

FINISH - Dark bronze corrosion-resistant polyester powder finish is standard

LENS - Frosted tempered flat glass lens.

DISTRIBUTION - Type III standard. For other distribution please consult factory.

INSTALLATION - Convenient cast-in template for easy mounting over standard 4" outlet box; or there are top, back, side 1/2" threaded hubs available for conduit entry.

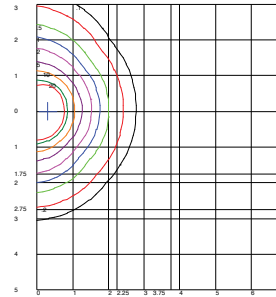
LISTINGS - UL/C-UL for wet location.

LAMP - Included except for CFL option.

All specifications are subject to change without notice

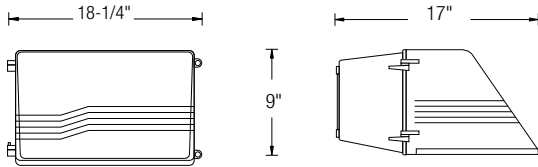


OWP-FC-401-MH-400-MVOLT



(Distance In Units Of Mounting Height)
(Values Based On 10 Foot Mounting Height)
(1/2 Maximum Candela Trace Shown As Dashed Curve)
(+) = Maximum Candela Point

Dimensions:



Ordering Guide > Example: OWP-FC-401-MH-400-120-PC120-BZ

OWP-FC-401					
SERIES OWP-FC-401	WATTAGE HPS, MH HPS-400 - (400W High Pressure Sodium) MH-320 - (320W Metal Halide) MH-400 - (400W Metal Halide) CFL CFL-2X26 - (2X26W Compact Fluorescent) CFL-2X32 - (2X32W Compact Fluorescent) CFL-2X42 - (2X42W Compact Fluorescent) INDUCTION IND-40-50K ⁶ - (40W Induction) IND-80-50K ⁶ - (80W Induction)	VOLTAGE HPS, MH^{1,4} - 120 - MVOLT (120/208/240/277) - 347 ⁵ - 480 ⁵ CFL^{2,3,4} - 120 - MVOLT(120/277) - 208 - 240 - 347 INDUCTION⁶ - MVOLT(120/277)	OPTIONS PC120 - Photo control (120V only) PC277 - Photo control (277V only) SF - Single fuse DF - Double fuse O-EMG-750 - 750 lum. Emg. (CFL only) XT - 20°F/-30°C Min. Temp. Bal. (CFL only)	COLOR BZ - Bronze WH - White	ACCESSORIES OWP-FC-401-RL - Replacement lens kit

NOTES:

1. Pulse-Start standard on all fixtures above 175W.
2. Lamps are not included for CFL.
3. Please consult factory for dimming options.
- 4 (Consult factory) for other wattages and options.
5. 347 & 480 Volt not available on 50 & 70W fixture.
6. Induction fixtures shipped with 5000k lamp standard please contact factory for other color options.