

OWM-S-202-LED

LED Wall Mount Square Medallion

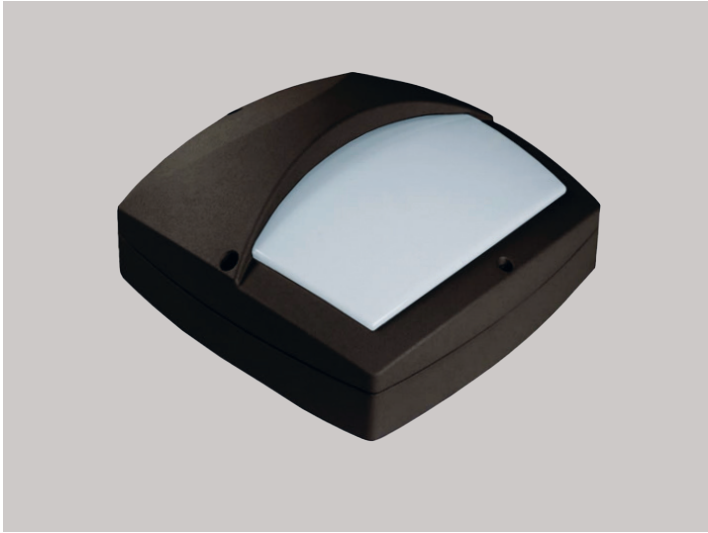
23 Wattage / 1200 Lumens

Catalog Number:

Project Name:

Note:

Type:



APPLICATIONS:

The LED Square Medallion series brings the maintenance free energy efficient benefits of LED to the luminaire while maintaining the traditional appearance that has been the standard for housing complexes for decades. Multiple sizes and frame options ensure that you will find the perfect look to compliment your building.

CONSTRUCTION:

Die cast aluminum housing and open front frame, textured powder coat finish over a chromate conversion coating. The one-piece silicone gasket effectively limits outside contaminants by sealing off the optical chamber.

FINISH:

Dark bronze corrosion- and UV-resistant polyester powder coat finish comes standard.

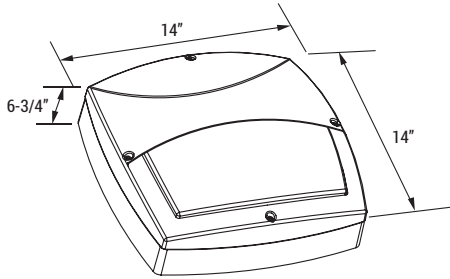
OPTICS:

High-performance LEDs maintain at least 70% of light output at 50,000 hours of service life.

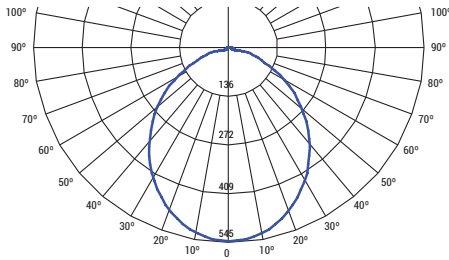
LENS:

Standard opal polycarbonate lens.

DIMENSION:



PHOTOMETRICS:



SPECIFICATIONS:

LUMENS	1200 lumens
WATTAGE	23W
CCT	50K
CRI	80
VOLTAGE	120-277 VAC
POWER FREQUENCY	50/60 Hz
APPLICABLE ENVIRONMENT	Dry/Damp/Wet location



B	U	G
0	3	2

Ordering Guide > Example: **OWM-S-202-LED-1200L-MVOLT-50K-BZ**

OWM-S-202-LED					
SERIES	LUMENS	VOLTAGE	CCT	FINISH	OPTION
OWM-S-202-LED - Half Cut-Off Frame Medallion	1200L - 1200 lumens	MVOLT - 120-277V	50K - 5000K	BZ - Bronze WH - White BK - Black	PHC - Photocell