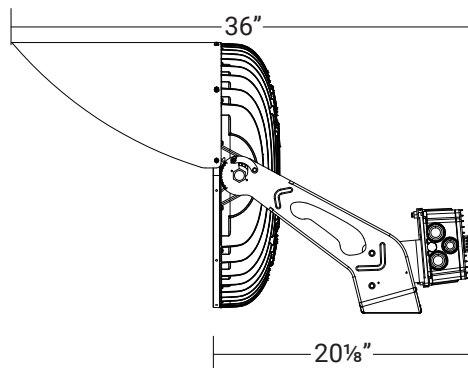
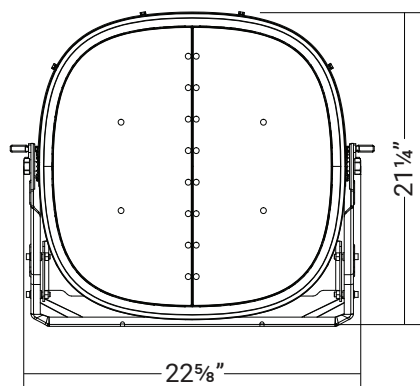


Rotate 355° Tilt 240°



SERIES	DELIVERED LUMENS	WATTAGE
OSP-106-RGBW-800W	74000 lm	800W
OSP-106-RGBW-1000W	93000 lm	1000W

Based on 5000K, >70 CRI. Actual wattage may vary +/- 5%



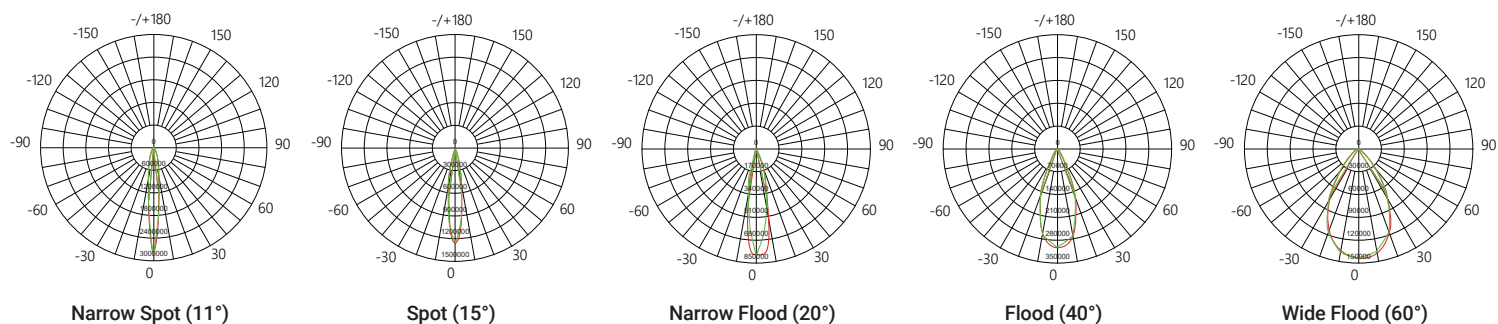
Introducing our versatile LED Sports Lighter, specifically engineered for large spaces including sports arenas, harbors, streets, and other expansive outdoor areas. With a focus on maximum illumination efficiency and unrivaled precision, this luminaire guarantees exceptional lighting performance. Its advanced heat-dissipating exterior ensures efficient thermal management, effectively extending the lifespan of the product. Illuminate your surroundings with unparalleled brilliance and reliability, making every space shine with confidence.

FEATURES

1. IP66 waterproof rating for exceptional performance in harsh weather conditions.
2. 5-year warranty provides long-term peace of mind and customer support.
3. Easy assembly and disassembly for convenient maintenance.
4. High-strength structure with corrosion-resistant polyester powder coating for enhanced durability.
5. Multiple beam angle options for customizable illumination.
6. Optional color temperature to suit specific needs and preferences.
7. Certified product meeting CE, RoHS, DLC, FCC, and UL standards.
8. Versatile application in stadiums, sports fields, high mast lighting, light towers, ports, and more.
9. Lighting Simulation service available for tailored lighting design.
10. Heavy duty die-cast aluminum housing.
11. Ambient operating temperature ranges from -40 - 122°F.

SERIES	LED Sports Lighter - RGBW - 800W / 1000W
WATTAGE	800W, 1000W
DELIVERED LUMEN	74000 lm, 92500 lm
VPR	10KV SPD (Standard), 20KV SPD
BEAM ANGLE	Narrow Spot 11°, Spot 15°, Narrow Flood 20°, Flood 40°, Wide Flood 60°
CONTROL MODE	DMX512, RDM
LIFETIME	100,000 HR (L70B50 @77°F)



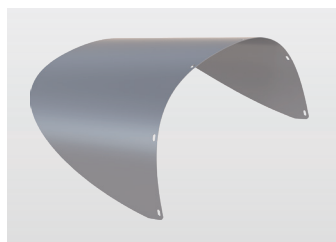


Reference IES files for additional distribution curve information.

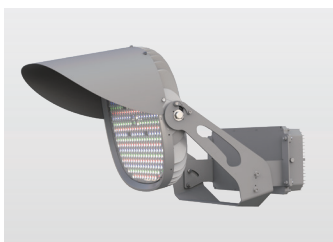
PARAMETERS

Wattage				Light Efficiency		CCT		CRI	SDCM	
800W (R: 200W/ G: 200W/ B: 200W/ W: 200W) 1000W (R: 250W/ G: 250W/ B: 250W/ W: 250W)				R: 56Lm/W, G: 113Lm/W, B: 37Lm/W, W: 165Lm/W, RGBW: 93Lm/W		RGB, RGBW Optional		70	≤5 (White)	
Input Voltage	Power Factor	THD	Percent Flicker (%)	Surge Protection	Protection Against Electric	IP	IK	EPA		
AC 200-480V	≥0.95	≤15%	<3%	10KV	Class I	IP66	IK08	Front: 2.94 ft² , Side: 1.02 ft²		
Operating Temp Range		Net Weight		Dimension Without Visor		Packing Dimension		Finish		Color
-40°F~-+122°F		59.30 lbs±1.1 Without Visor: 56.66 lbs±1.1		20.20"x22.64"x21.26"		30.71"x24.80"x13.98"		Powder Coated		Gray

VISOR (OPTIONAL)



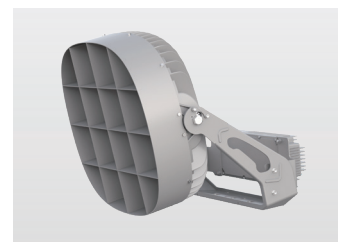
OSP-106-ACC-1-RGB-800-1000



LOUVER (OPTIONAL)



OSP-106-ACC-2-RGB-800-1000

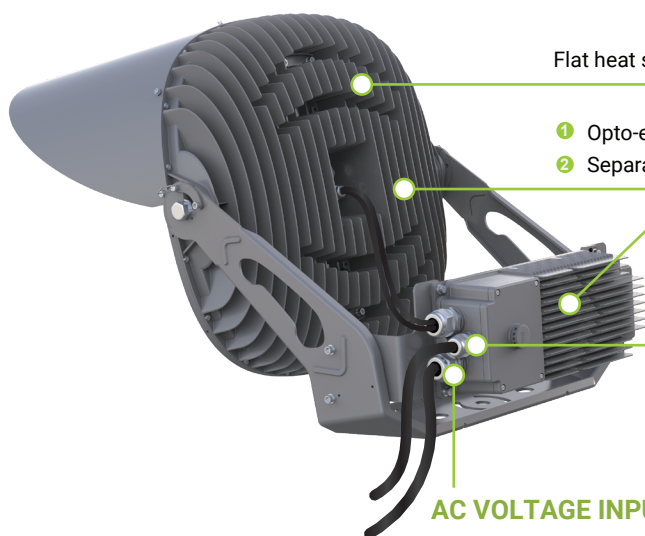


EXAMPLE:					
SERIES	WATTAGE	BEAM ANGLE	RGB CONTROL	VPR	ACCESSORY
OSP-106-RGBW	<input type="checkbox"/> 800W	<input type="checkbox"/> NS=11°	<input type="checkbox"/> DMX512	<input type="checkbox"/> 10KV	<input type="checkbox"/> OSP-106-ACC-1-RGB-800-1000
	<input type="checkbox"/> 1000W	<input type="checkbox"/> SP=15° <input type="checkbox"/> NFL =20° <input type="checkbox"/> FL =40° <input type="checkbox"/> WFL =60°	<input type="checkbox"/> RDM	<input type="checkbox"/> 20KV	<input type="checkbox"/> OSP-106-ACC-2-RGB-800-1000



In-distribution box power supply installation

Independent or in-distribution box power supply installation, suitable for replacing HID products, easy installation, and maintenance.



Flat heat sink, ensuring sufficient heat dissipation area and air circulation space.

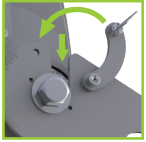
- ① Opto-electric separation design to reduce material costs.
- ② Separation of power supply and heat sink, extending the overall lamp life.

DIMMER CONNECTOR

Reserved intelligent module installation position, compatible with various remote smart control solutions such as 0-10V Dimming, PWM, Dali, DMX, Synapse, etc.

AC VOLTAGE INPUT

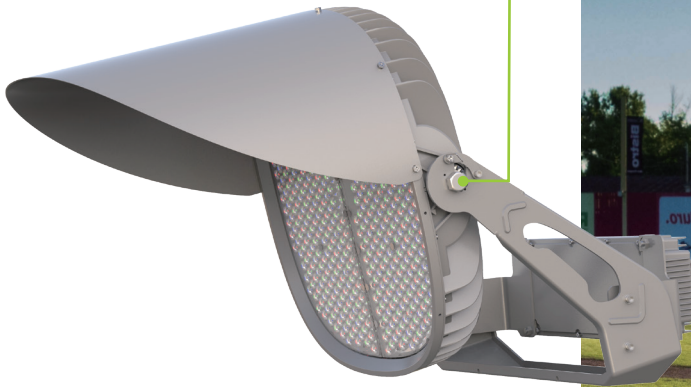
User-friendly structural design, enhancing safety in high-altitude operations and saving labor costs.



Snap-on installation structure, enabling single-person installation.



Incremental 2.5deg tick marks to allow for precise aiming and to facilitate the alignment of luminaires.



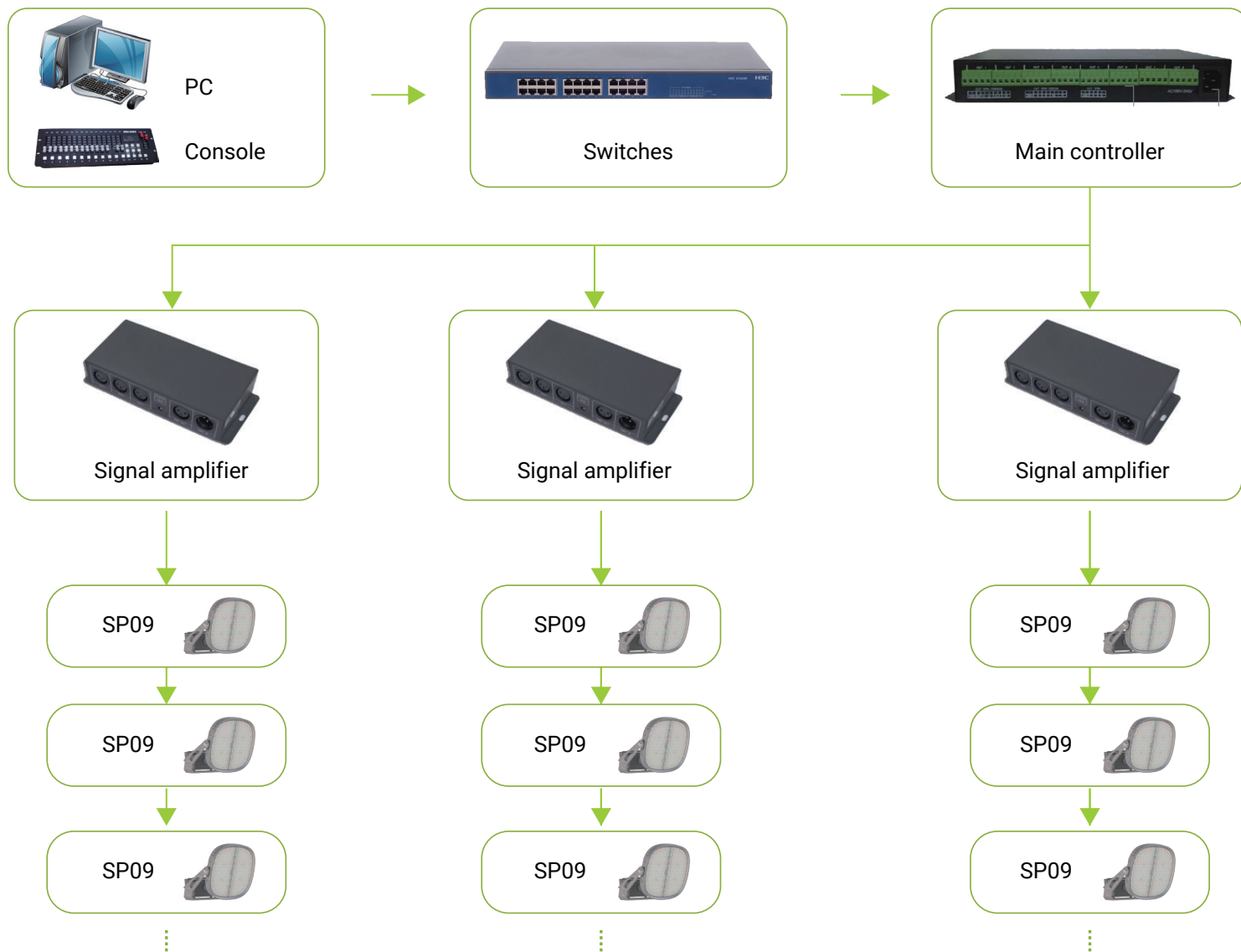
INTEGRATED CONTROLS

The fixture is compatible with Synapse™ wireless control system, including RGBW sports lighting. It offers a smart, stable and imaginative lighting control solution to your sports facility.



OSP RGB & RGBW

DMX control program examples



DMX Lighting Installation Considerations

1. Between lamps and lanterns and lamps and lanterns USES serial mode.
2. The same serial number does not exceed 30 LED lamps and lanterns, tandem distance less than 100-200 meters, in appropriate cases need to increase the signal amplifier, lamps and lanterns series between the distance should be as short as possible.
3. The signal wiring, adopts single line way, as far as possible away from the high voltage large current grid.
4. All the wire used for shielding line, signal grounding treated separately.

The appendix

All related equipment it is recommended to use the local suppliers, at the same time, we can provide all relevant equipment and related technical support, can support online technical services.

APPLICATIONS

Outdoor / Indoor / Industrial

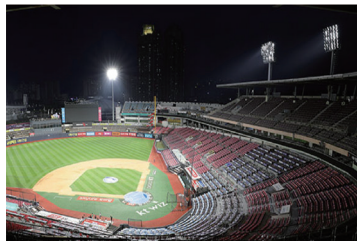
- Sports & recreational fields
- Large-scale outdoor events
- Industrial and construction sites
- Parking lots and garages
- Crane lighting
- Security and outdoor surveillance



Sports Complex



Football Pitch



Baseball Field



Parking Lot



Industrial & construction sites



Airport



Port Lighting