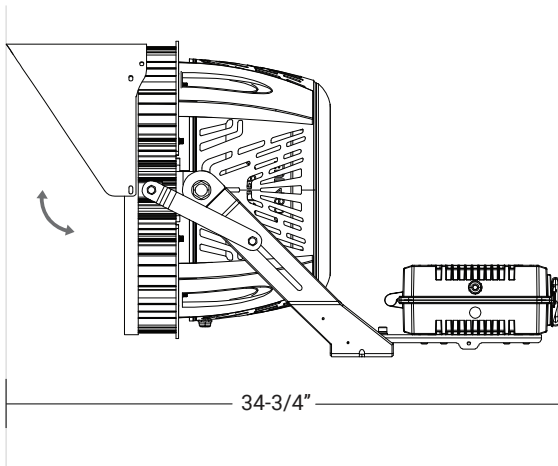
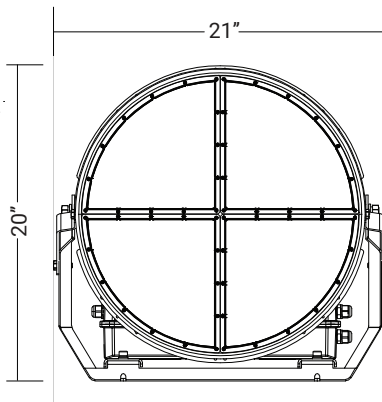




Rotate 355° Tilt 240°



SERIES	DELIVERED LUMENS	WATTAGE
OSP-106-RGBW-750W	32000W	750W

Based on 5000K, >70 CRI. Actual wattage may vary +/- 5%

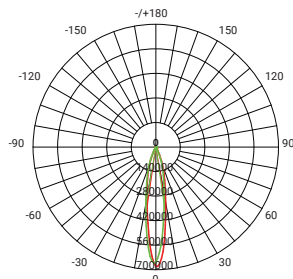
Introducing our versatile LED Sports Lighter, specifically engineered for large spaces including sports arenas, harbors, streets, and other expansive outdoor areas. With a focus on maximum illumination efficiency and unrivaled precision, this luminaire guarantees exceptional lighting performance. Its advanced heat-dissipating exterior ensures efficient thermal management, effectively extending the lifespan of the product. Illuminate your surroundings with unparalleled brilliance and reliability, making every space shine with confidence.

FEATURES

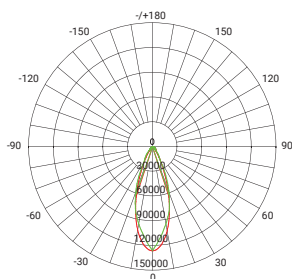
1. IP66 waterproof rating for exceptional performance in harsh weather conditions.
2. 5-year warranty provides long-term peace of mind and customer support.
3. Easy assembly and disassembly for convenient maintenance.
4. High-strength structure with corrosion-resistant polyester powder coating for enhanced durability.
5. Multiple beam angle options for customizable illumination.
6. Optional color temperature to suit specific needs and preferences.
7. Certified product meeting CE, RoHS, DLC, FCC, and UL standards.
8. Versatile application in stadiums, sports fields, high mast lighting, light towers, ports, and more.
9. Lighting Simulation service available for tailored lighting design.
10. Heavy duty die-cast aluminum housing.
11. Ambient operating temperature ranges from -40 - 122°F.

SERIES	LED Sports Lighter - RGBW - 750W
WATTAGE	750W
VPR	10KV SPD (Standard), 20KV SPD
CCT	RGB, W=3000K, 4000K, 5000K
BEAM ANGLE	Spot 20°, Flood 40°, Wide Flood 60°
CRI	70, 80, 90
CONTROL MODE	DMX512

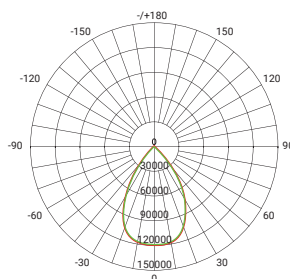




Spot (20°)



Flood (40°)



Wide Flood (60°)

Reference IES files for additional distribution curve information.

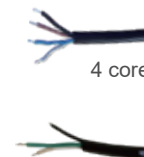
EXTERNAL POWER SUPPLY

DC OUT 4 core

DMX 4 core

DMX/W 4 core

AC IN 3 core



4 core



3 core

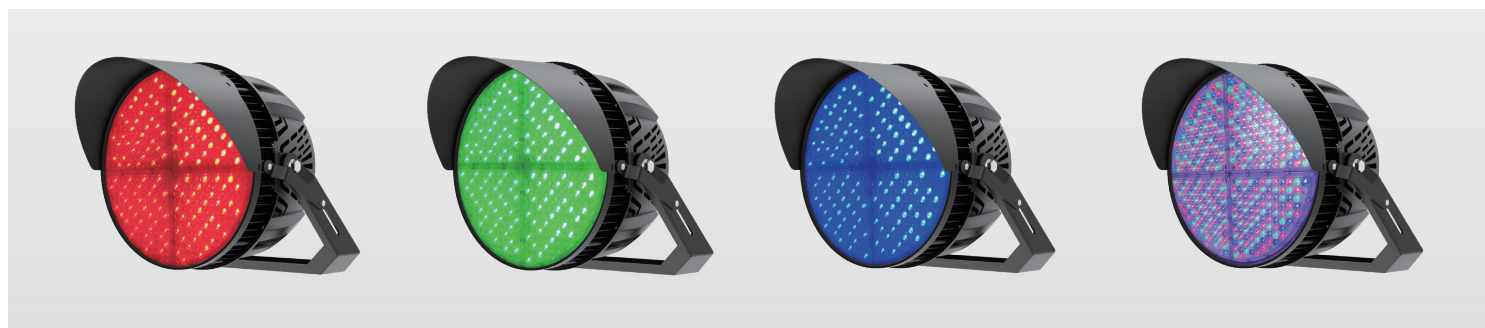
ELECTRICAL DATA:

PowerSupply	Input Voltage	Power Frequency	Power Efficiency	Power Factor	Total Harmonic Distortion
INVENTRONICS +Decoder	100-277 277-480	50/60Hz	>95%	0.95	<15%

OTHERS:

IP Rating	Lifetime (L70 Standard)	Heat Radiator	Lens Material	Carton Dimensions	Gross Weight	Net Weight
IP66	50,000 hours	Forging aluminum	PC	24.4"x22.4"x16.3"	60.6 lbs	50.7 lbs

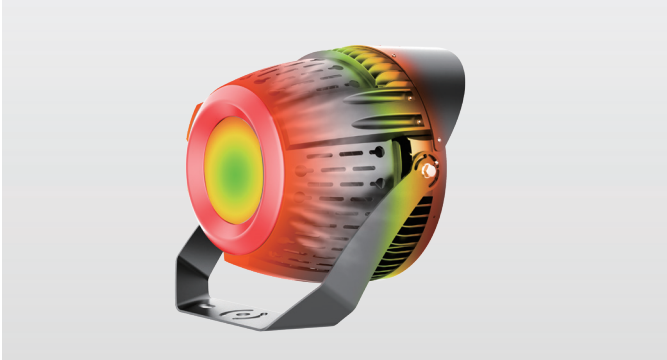
AVAILABLE DMX CONTROLLER CAN ADJUST THE LIGHT COLOR

 (Cascade control<30) **GREY SCALE 256**

EXAMPLE:

SERIES	VOLTAGE	WATTAGE	BEAM ANGLE	CCT	RGB CONTROL	VPR	ACCESSORY
OSP-106-RGBW	<input type="checkbox"/> 100-277V <input type="checkbox"/> 277-480V	<input type="checkbox"/> 750W	<input type="checkbox"/> SP =20° <input type="checkbox"/> FL =40° <input type="checkbox"/> WFL =60°	<input type="checkbox"/> RGBW-30K <input type="checkbox"/> RGBW-40K <input type="checkbox"/> RGBW-50K	<input type="checkbox"/> DMX512	<input type="checkbox"/> 10KV <input type="checkbox"/> 20KV	<input type="checkbox"/> OSP-106-ACC-1-750-1250 <input type="checkbox"/> OSP-106-ACC-2-LAD

RADIATOR

The OSP series sports lighting utilizes fin heat sinks for improved heat dissipation, leading to a longer lifespan. The back cover acts as a cooling mechanism, efficiently dissipating heat generated by the power source. This design ensures optimal performance and durability.



LASER AIMING DEVICES (OPTIONAL)

Our laser aiming device provides precise control for angling and aiming each sport light, allowing you to achieve the exact optimal position with ease and accuracy.



OSP-106-ACC-2-LAD



SLIP FITTER BRACKET (OPTIONAL)

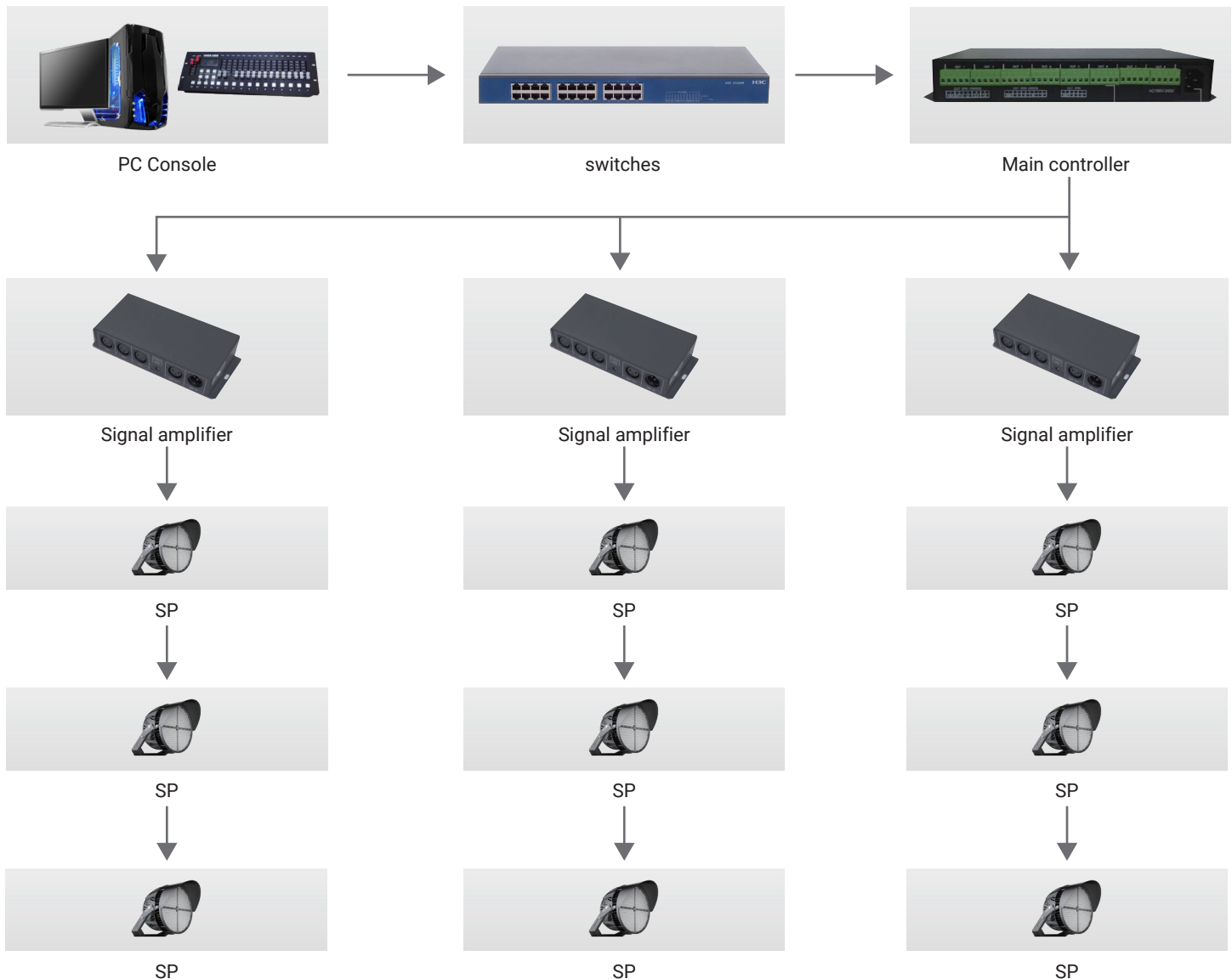
The default mount york is included. The optional advanced slip fitter bracket offers a stable and compact footprint while allowing for rotation and tilt in various angles, providing the flexibility to position the sport light according to your specific requirements.



OSP-106-ACC-1-750-1250



DMX CONTROL PROGRAM EXAMPLES



DMX LIGHTING INSTALLATION CONSIDERATIONS:

1. The lamps and lanterns should be connected in a serial mode to ensure proper communication and control.
2. A maximum of 30 LED lamps and lanterns can be connected in the same serial number, with a recommended tandem distance of 300-500 meters. In some cases, signal amplifiers may be necessary to extend the distance between lamps and lanterns, but this should be minimized whenever possible.
3. Arrange the signal wiring in a single-line configuration, keeping a safe distance from high voltage current grids to avoid interference.
4. Ensure that all wires used for shielding and signal grounding are treated separately to maintain signal integrity and reduce potential noise or interference.

THE APPENDIX:

For related equipment, Elite Lighting can provide all relevant technical support.

OSP-106-RGBW-750W

TEST NO.: **EL06152321**

INPUT WATTS: **742.2**

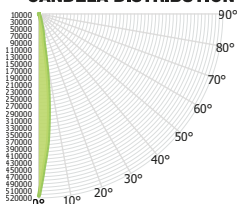
LUMENS: **32483**

EFFICACY: **44**

BEAM ANGLE: **20**

SPACING CRITERIA: **0.21**

CANDELA DISTRIBUTION



CANDELA TABLE

	0°	90°
0°	514077	514077
10°	80286	66303
20°	10226	9777
30°	2220	2349
40°	1192	1200
50°	892	906
60°	690	656
70°	468	363
80°	293	122
90°	0	2

LUMINANCE (cd/sq.m)

	0.00°	90.00°
0°	0	0
10°	0	0
20°	0	0
30°	0	0
40°	0	0
50°	0	0
60°	0	0
70°	0	0
80°	0	0
90°	0	0

LUMENS PER ZONE

ZONE	LUMENS
0° - 10°	19402
10° - 20°	7421
20° - 30°	2232
30° - 40°	995
40° - 50°	823
50° - 60°	705
60° - 70°	529
70° - 80°	295
80° - 90°	80

ZONAL LUMEN SUMMARY

ZONE	UMENS	% LUMINAIRE
0° - 20°	26824	83%
0° - 30°	29056	89%
0° - 40°	30051	93%
0° - 60°	31579	97%
0° - 80°	32403	100%
0° - 90°	32483	100%

CONE OF LIGHT

MOUNTING HEIGHT	FC AT BEAM CENTER	BEAM DIA. 0°-180°	BEAM DIA. 90°-270°
6.0 ft	14279.9 fc	1.2 ft	1.1 ft
8.0 ft	8032.5 fc	1.6 ft	1.5 ft
10.0 ft	5140.8 fc	2.0 ft	1.9 ft
12.0 ft	3570.0 fc	2.4 ft	2.3 ft
14.0 ft	2622.8 fc	2.8 ft	2.7 ft
16.0 ft	2008.1 fc	3.2 ft	3.1 ft
18.0 ft	1586.7 fc	3.6 ft	3.4 ft
20.0 ft	1285.2 fc	4.0 ft	3.8 ft

INDOOR COEFFICIENTS OF UTILIZATION

pf pc pw	20%																		0%
	80%				70%				50%				30%				10%		0%
	70%	50%	30%	10%	70%	50%	30%	10%	50%	30%	10%	50%	30%	10%	50%	30%	10%	0%	
0	119	119	119	119	116	116	116	116	111	111	111	106	106	106	102	102	102	100	
1	115	113	111	109	113	111	109	107	107	105	104	103	102	101	100	99	98	97	
2	111	108	105	102	109	106	103	101	103	101	99	100	98	97	97	96	95	93	
3	108	103	100	97	106	102	99	96	100	97	95	97	95	93	95	94	92	91	
4	105	100	96	93	104	99	95	93	97	94	92	95	93	91	93	91	90	89	
5	102	97	93	90	101	96	93	90	95	91	89	93	90	88	92	89	88	87	
6	100	94	90	88	99	94	90	87	92	89	87	91	88	86	90	88	86	85	
7	98	92	88	86	97	92	88	85	91	87	85	90	87	85	89	86	84	83	
8	96	90	86	84	95	90	86	84	89	86	83	88	85	83	87	85	83	82	
9	94	88	85	82	93	88	85	82	87	84	82	87	84	82	86	83	82	81	
10	93	87	83	81	92	86	83	81	86	83	81	85	82	81	85	82	80	80	