

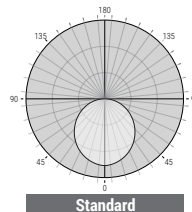
2 Feet		4 Feet		8 Feet	
LUMENS	WATTS	LUMENS	WATTS	LUMENS	WATTS
1200L	10 W	2400L	20 W	4800L	40 W
1800L	15 W	3600L	30 W	7200L	60 W
2400L	20 W	4800L	40 W	9600L	80 W

Based on 4000K, 85+CRI. Actual wattage may vary +/-5%

FEATURES

The IP65-rated OLS luminaire provides seamless, uninterrupted linear lighting for demanding environments. Its doorless frame and gasketed lens create a refined, uniform appearance while ensuring protection against dust, water, and impact (IK08). Featuring advanced optics and sealed endcaps, this durable solution maintains a sleek aesthetic. Ideal for hospitality, healthcare, cleanrooms, and outdoor walkways, the OLS delivers dependable performance and design continuity across diverse residential and commercial applications.

LUMENS	2'- 1200L/1800L/2400L 4'- 2400L/3600L/4800L 8'- 4800L/7200L/9600L
CCT	30K/40K/50K
CRI	85+ Standard
COLOR QUALITY	3 Step MacAdam Ellipses
WIDTHS	4"
LENGTHS	2', 4', 8'
DISTRIBUTION PATTERNS	Standard
MOUNTING	Suspended Mount
FINISH	WH (White)
OPERATION HUMIDITY	RH: 5%~95%>2.7KPA
OPERATION TEMPERATURE	-20°C to 50°C (-4°F to 122°F)
DIMMING & CONTROLS	0-10V Flicker Free 1% Dimming Standard (DIM10)
EMERGENCY	10W - Up to 1000L Output
LIFETIME	L70>50,000-hour reported lifetime
PHOTOMETRIC TESTS	In accordance with IES LM79-08, LM80 and TM-30, TM-21



CONSTRUCTION

Features a lightweight and durable aluminum body for ease of installation, paired with a rugged polycarbonate lens. IP65-rated silicone gasketing keeps the fixture tightly sealed against water, dust, and environmental pollutants.

An aluminum alloy joining bracket allows two fixtures to be connected together with screws and creates a 3 mm spacing at the back during installation.

ENCLOSED AND GASKETED

The fixture lens assembly and end caps are fully sealed using one-piece silicone gaskets to ensure long-term protection in wet and demanding environments.

OPTICAL

Reflectors are fabricated from 20-gauge aluminum and finished with a post-painted, 95 percent reflective premium coating. The standard flush, frost white snap-in acrylic lens is impact resistant and provides 63 percent light transmission with 99 percent diffusion for smooth, uniform illumination.

MOUNTING

The OLS-WL-LED is suitable for wet location indoor and outdoor applications. Mounting brackets (sold separately) for suspended installations. The fixture is supplied with a stainless steel mounting bracket featuring PEM studs and sealing washers to maintain ingress protection.

ELECTRICAL INFORMATION

Powered by high-quality constant-current LED drivers rated for 50 to 60 Hz operation at 120 to 277 V input. Drivers produce less than 20 percent total harmonic distortion and maintain a power factor between 0.90 and 1.00.

Male and female 18-gauge, 6-wire plug connectors are included with each luminaire to allow for simple, hassle-free continuous wiring. Each luminaire must be installed male to female.

COLOR TEMPERATURE

Features field-selectable color temperature and lumen output for maximum flexibility. With a simple switch selection, choose from 3000K, 4000K, or 5000K to achieve warm to cool lighting environments.

Selectable lumen packages of 2400, 3600, or 4800 lumens in 4 feet fixture, allow precise adjustment of light output for the application. Factory default 4 feet settings are 5000K and 4800 lumens, based on the selected configuration.

SUPPORT CABLE AND FEED

Standard suspension is provided through a conductive power feed and suspension cable designed for secure support and reliable power delivery. The adjustable power cable is supplied in a standard 4 ft length and is field adjustable to accommodate installation conditions.

A 5-conductor cable is standard. Emergency power is available as a 10 W option and is offered only on 4 ft and 8 ft fixtures. Maximum support spacing is 8 ft to ensure proper alignment and long-term stability.

DIMMING AND DRIVER INFORMATION

DIM10 standard flicker-free dimming down to 1% - 0 to 10 Volt control. Compatible with MVOLT 120 V and 277 V systems.

WARRANTY

Five-year warranty covering parts and components. Labor not included.

LISTINGS

cULus listed for wet location.

ETL listed for U.S. and Canada, suitable for wet location and conforming to **UL** standards.

Tested to LM-79 and LM-80 standards by an independent laboratory.

Photometric testing completed in accordance with IES LM-79, TM-30, and TM-21 standards, with calculated lifetime L70 rated at 200,000 hours.

FCC Part 15 compliant for EMI and RFI emissions at 120 VAC and 277 VAC.

RoHS compliant, contains no mercury or lead.

DLC certified and compliant with California Title 24 high-efficacy LED requirements.

BAA Buy American Act compliant, meeting FAR, DFARS, and DOT government procurement requirements.

IP65 rated for ingress protection.

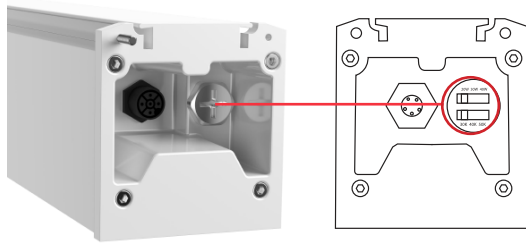
IK08 rated for impact resistance.

Example: **OLS-WL-LED-4-S-4-2400L/3600L/4800L-DIM10-MVOLT-30K/40K/50K-85-IP65-WH**

OLS-WL-LED											
SERIES	SIZE	SHAPE	LUMENS	DISTRIBUTION	DIMMING	VOLTAGE	CCT	CRI	IP RATING	FINISH	EMERGENCY
OLS-WL-LED Oracle Suspended LED Linear	4 - 4 Inches	S - Single CR - Continuous Run** 2 feet increment for continues *40 feet Maximum run	2 - 2' 1200L/1800L/2400L 4 - 4' 2400L/3600L/4800L 8 - 8' 4800L/7200L/9600L	(blank) - Standard	DIM10 - 0-10V Dimming	MVOLT	30K/40K/50K	85	IP65 - IP65 Rating	WH - White	0-EMG-LED-10W ¹ Only available for 4' & 8'

**For continuous run applications, fixtures must be configured using combinations of standard 2 ft, 4 ft, and 8 ft sections only. Refer to the continuous run chart on page 4 for approved configurations.

Lumen and CCT selector



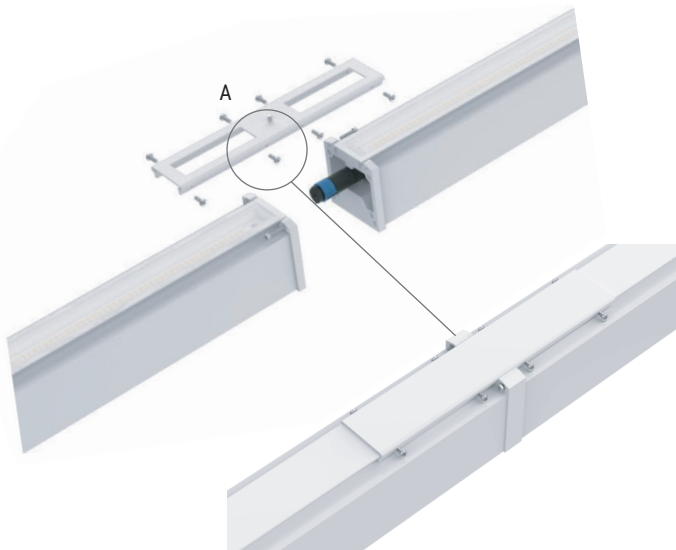
MULTI-LUMEN AND CCT SELECTABLE

Three lumen selectable options: 1200L/1800L/2400L; 2400L/3600L/4800L; and 4800L/7200L/9600L.

Three CCT selectable options: 3000K, 4000K, or 5000K.

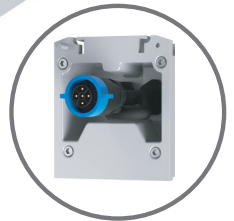
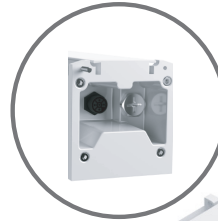
A waterproof screw cover protects the selector switch. The luminaires are equipped with breathable valves that are waterproof and oil-resistant.

CONSTRUCTION



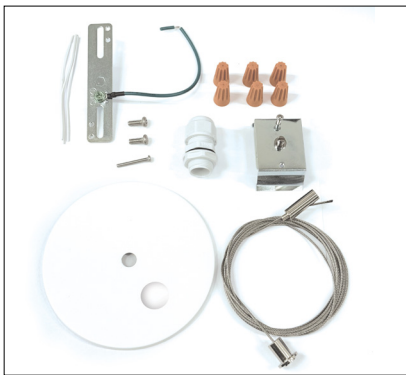
A. Included with continuous run orders.

Waterproof docking female terminal



Waterproof docking male terminal

MOUNTING Kit



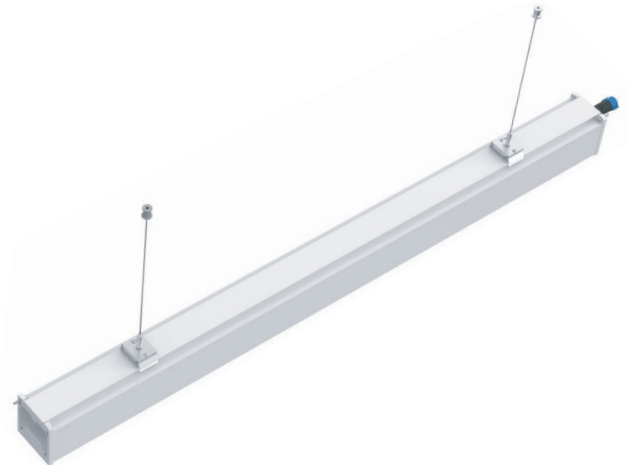
□ GSS-OLS-WL-1D-PF-WH

Single-drop suspension kit 8 ft stainless steel suspension wire, fixture clip, decorative canopy, J-box mounting bracket, terminal caps, waterproof PG connector, and screw kit.



□ GSS-OLS-WL-1D-WH

Single-drop suspension kit without power feed. Includes 8 ft stainless steel suspension wire, fixture clip, and expansion nail.



Continuous runs can be assembled up to a maximum of 40 ft. Custom or non-standard lengths are not available. Overall run lengths must be achieved by combining the available fixture lengths. For example, a 6 ft run can be created using one 2 ft and one 4 ft fixture, and a 16 ft run can be created using two 8 ft fixtures. Lengths such as 13 ft or 27 ft are not achievable.

MOUNTING CONFIGURATIONS

SECTIONS	TOTAL LENGTH
----------	--------------

STANDARD

2ft	4ft	8ft	Nominal	Actual
1x			2'	25.5"
	1x		4'	49.5"
		1x	8'	97.5"

25.5"
2'

49.5"
4'

97.5"
8'

CONTINUOUS RUN CONFIGURATION

1x	1x		6'	75"
1x		1x	10'	123"
	1x	1x	12'	147"
1x	1x	1x	14'	172.5"

75"
2' 4'

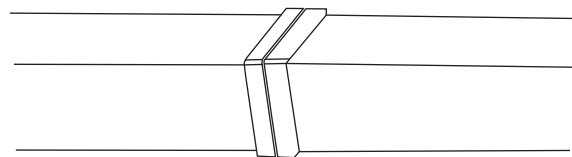
123"
2' 8'

147"
4' 8'

172.5"
4' 8' 2'

For longer run, please use the same logic. Maximum run 40'.

3D LUMINAIRE JOINING SECTION



OLS-WL-LED-3-S-4-2400L-3600L-4800L-DIM10-MVOLT-30K-40K-50K-85-IP65-WH (2400L)

TEST NO.: **EL08282556**

INPUT WATTS: **19.9**

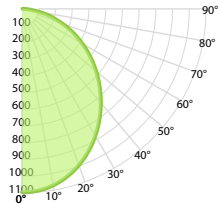
LUMENS: **2865**

EFFICACY: **144**

BEAM ANGLE: **103**

SPACING CRITERIA: **1.19**

CANDELA DISTRIBUTION



CANDELA TABLE

	0°	90°
0°	1096	1096
10°	1072	1072
20°	994	1002
30°	876	894
40°	733	757
50°	577	603
60°	417	439
70°	255	279
80°	104	111
90°	3	3

LUMINANCE (cd/sq.m)

	0.00°	90.00°
0.00°	11413	11413
45.00°	9666	10043
55.00°	9039	9485
65.00°	8285	8895
75.00°	7309	7778
85.00°	4629	5034

LUMENS PER ZONE

ZONE	LUMENS
0° - 10°	104
10° - 20°	292
20° - 30°	433
30° - 40°	507
40° - 50°	511
50° - 60°	449
60° - 70°	337
70° - 80°	188
80° - 90°	44

ZONAL LUMEN SUMMARY

ZONE	LUMENS	% LUMINAIRE
0° - 20°	396	14%
0° - 30°	829	29%
0° - 40°	1336	47%
0° - 60°	2296	80%
0° - 80°	2821	98%
0° - 90°	2865	100%

CONE OF LIGHT

MOUNTING HEIGHT	FC AT BEAM CENTER	BEAM DIA. 0° -180°	BEAM DIA. 90° -270°
6.0 m	30.4 lx	15.1 m	15.8 m
8.0 m	17.1 lx	20.1 m	21.1 m
10.0 m	11.0 lx	25.1 m	26.4 m
12.0 m	7.6 lx	30.2 m	31.7 m
14.0 m	5.6 lx	35.2 m	36.9 m
16.0 m	4.3 lx	40.2 m	42.2 m
18.0 m	3.4 lx	45.3 m	47.5 m
20.0 m	2.7 lx	50.3 m	52.8 m

INDOOR COEFFICIENTS OF UTILIZATION

pf	80%										20%										0%									
	70%	50%	30%	10%	70%	50%	30%	10%	70%	50%	30%	10%	50%	30%	10%	50%	30%	10%	50%	30%	10%	50%	30%	10%	50%	30%	10%	50%	30%	10%
0	119	119	119	119	116	116	116	116	111	111	111	111	106	106	106	106	106	102	102	102	100	100	100	100	100	100	100	100	100	100
1	109	104	100	96	106	102	98	95	98	95	92	94	91	89	90	88	86	84	84	84	84	84	84	84	84	84	84	84	84	84
2	99	91	84	79	97	89	83	78	86	81	76	82	78	74	79	76	73	71	71	71	71	71	71	71	71	71	71	71	71	71
3	91	80	72	66	88	79	71	65	76	69	64	73	67	63	70	66	62	60	60	60	60	60	60	60	60	60	60	60	60	60
4	83	71	63	56	81	70	62	56	67	60	55	65	59	54	63	58	53	51	51	51	51	51	51	51	51	51	51	51	51	51
5	76	64	55	48	74	63	54	48	60	53	47	59	52	47	57	51	46	44	44	44	44	44	44	44	44	44	44	44	44	44
6	71	57	49	42	69	57	48	42	55	47	42	53	46	41	51	46	41	39	39	39	39	39	39	39	39	39	39	39	39	39
7	66	52	44	37	64	51	43	37	50	42	37	48	42	37	47	41	36	34	34	34	34	34	34	34	34	34	34	34	34	34
8	61	48	39	33	60	47	39	33	46	38	33	44	38	33	43	37	33	31	31	31	31	31	31	31	31	31	31	31	31	31
9	57	44	36	30	56	43	35	30	42	35	30	41	34	30	40	34	30	28	28	28	28	28	28	28	28	28	28	28	28	28
10	54	40	33	27	52	40	32	27	39	32	27	38	32	27	37	31	27	25	25	25	25	25	25	25	25	25	25	25	25	25

OLS-WL-LED-3-S-4-2400L-3600L-4800L-DIM10-MVOLT-30K-40K-50K-85-IP65-WH (3600L)

TEST NO.: **EL08282556**

INPUT WATTS: **30.4**

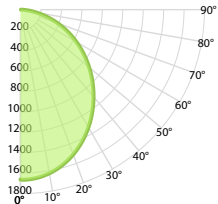
LUMENS: **4334**

EFFICACY: **143**

BEAM ANGLE: **103**

SPACING CRITERIA: **1.19**

CANDELA DISTRIBUTION



CANDELA TABLE

	0°	90°
0°	1661	1661
10°	1626	1626
20°	1508	1520
30°	1329	1354
40°	1112	1147
50°	876	913
60°	633	665
70°	387	410
80°	152	167
90°	4	4

LUMINANCE (cd/sq.m)

	0.00°	90.00°
0.00°	17307	17307
45.00°	14662	15208
55.00°	13706	14348
65.00°	12561	13253
75.00°	10690	11539
85.00°	6993	7443

LUMENS PER ZONE

ZONE	LUMENS
0° - 10°	157
10° - 20°	443
20° - 30°	657
30° - 40°	769
40° - 50°	774
50° - 60°	681
60° - 70°	506
70° - 80°	280
80° - 90°	66

ZONAL LUMEN SUMMARY

ZONE	LUMENS	% LUMINAIRE
0° - 20°	600	14%
0° - 30°	1257	29%
0° - 40°	2026	47%
0° - 60°	3482	80%
0° - 80°	4268	98%
0° - 90°	4334	100%

CONE OF LIGHT

MOUNTING HEIGHT	FC AT BEAM CENTER	BEAM DIA. 0° -180°	BEAM DIA. 90° -270°
6.0 m	46.2 lx	15.1 m	15.8 m
8.0 m	26.0 lx	20.1 m	21.1 m
10.0 m	16.6 lx	25.1 m	26.4 m
12.0 m	11.5 lx	30.2 m	31.7 m
14.0 m	8.5 lx	35.2 m	36.9 m
16.0 m	6.5 lx	40.2 m	42.2 m
18.0 m	5.1 lx	45.3 m	47.5 m
20.0 m	4.2 lx	50.3 m	52.8 m

INDOOR COEFFICIENTS OF UTILIZATION

pf	80%										20%										0%									
	70%	50%	30%	10%	70%	50%	30%	10%	70%	50%	30%	10%	50%	30%	10%	50%	30%	10%	50%	30%	10%	50%	30%	10%	50%	30%	10%	50%	30%	10%
0	119	119	119	119	116	116	116	116	111	111	111	111	106	106	106	106	106	102	102	102	100	100	100	100	100	100	100	100	100	100
1	109	104	100	96	106	102	98	95	98	95	92	94	91	89	90	88	86	84	84	84	84	84	84	84	84	84	84	84	84	84
2	99	91	85	79	97	89	83	78	86	81	76	83	78	74	80	76	73	71	71	71	71	71	71	71	71	71	71	71	71	71
3	91	80	72	66	88	79	71	65	76	69	64	73	67	63	70	66	62	60	60	60	60	60	60	60	60	60	60	60	60	60
4	83	71	63	56	81	70	62	56	67	60	55	65	59	54	63	58	53	51	51	51	51	51	51	51	51	51	51	51	51	51
5	77	64	55	48	74	63	54	48	61	53	48	59	52	47	57	51	47	44	44	44	44	44	44	44	44	44	44	44	44	44
6	71	58	49	42	69	57	48	42	55	47	42	53	46	41	52	46	41	39	39	39	39	39	39	39	39	39	39	39	39	39
7	66	52	44	37	64	51	43	37	50	42	37	48	42	37	47	41	37	35	35	35	35	35	35	35	35	35	35	35	35	35
8	61	48	39	34	60	47	39	33	46	38	33	45	38	33	43	37	33	31	31	31	31	31	31	31	31	31	31	31	31	31
9	57	44	36	30	56	43	35	30	42	35	30	41	34	30	40	34	30	28	28	28	28	28	28	28	28	28	28	28	28	28
10	54	41	33	27	52	40	32	27	39	32	27	38	32	27	37	31	27	25	25	25	25	25	25	25	25	25	25	25	25	25

OLS-WL-LED-3-S-4-2400L-3600L-4800L-DIM10-MVOLT-30K-40K-50K-85-IP65-WH (4800L)

TEST NO.: **EL08282556**

INPUT WATTS: **39.1**

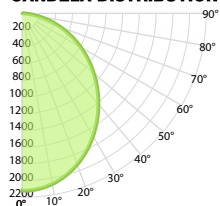
LUMENS: **5522**

EFFICACY: **141**

BEAM ANGLE: **103**

SPACING CRITERIA: **1.19**

CANDELA DISTRIBUTION



CANDELA TABLE

	0°	90°
0°	2117	2117
10°	2071	2072
20°	1921	1936
30°	1694	1725
40°	1417	1461
50°	1116	1164
60°	806	847
70°	492	522
80°	193	213
90°	5	5

LUMINANCE (cd/sq.m)

	0.00°	90.00°
0.00°	22056	22056
45.00°	18682	19377
55.00°	17463	18282
65.00°	16004	16886
75.00°	13621	14702
85.00°	8910	9484

LUMENS PER ZONE

ZONE	LUMENS
0° - 10°	200
10° - 20°	565
20° - 30°	837
30° - 40°	980
40° - 50°	987
50° - 60°	868
60° - 70°	645
70° - 80°	357
80° - 90°	84

ZONAL LUMEN SUMMARY

ZONE	LUMENS	% LUMINAIRE
0° - 20°	765	14%
0° - 30°	1602	29%
0° - 40°	2582	47%
0° - 60°	4436	80%
0° - 80°	5438	98%
0° - 90°	5522	100%

CONE OF LIGHT

MOUNTING HEIGHT	FC AT BEAM CENTER	BEAM DIA. 0° -180°	BEAM DIA. 90° -270°
6.0 m	58.8 lx	15.1 m	15.8 m
8.0 m	33.1 lx	20.1 m	21.1 m
10.0 m	21.2 lx	25.1 m	26.4 m
12.0 m	14.7 lx	30.2 m	31.7 m
14.0 m	10.8 lx	35.2 m	36.9 m
16.0 m	8.3 lx	40.2 m	42.2 m
18.0 m	6.5 lx	45.3 m	47.5 m
20.0 m	5.3 lx	50.3 m	52.8 m

INDOOR COEFFICIENTS OF UTILIZATION

pf	20%																0%			
	80%				70%				50%				30%				10%			
pc	70%	50%	30%	10%	70%	50%	30%	10%	50%	30%	10%	50%	30%	10%	50%	30%	10%	50%	30%	10%
pw	70%	50%	30%	10%	70%	50%	30%	10%	50%	30%	10%	50%	30%	10%	50%	30%	10%	50%	30%	10%
0	119	119	119	119	116	116	116	116	111	111	111	106	106	106	102	102	102	100	100	100
1	109	104	100	96	106	102	98	95	98	95	92	94	91	89	90	88	86	84	84	84
2	99	91	85	79	97	89	83	78	86	81	76	83	78	74	80	76	73	71	71	71
3	91	80	72	66	88	79	71	65	76	69	64	73	68	63	70	66	62	60	60	60
4	83	71	63	56	81	70	62	56	67	60	55	65	59	54	63	58	53	51	51	51
5	77	64	55	48	74	63	54	48	61	53	48	59	52	47	57	51	47	44	44	44
6	71	58	49	42	69	57	48	42	55	47	42	53	46	41	52	46	41	39	39	39
7	66	52	44	37	64	51	43	37	50	42	37	48	42	37	47	41	37	35	35	35
8	61	48	39	34	60	47	39	33	46	38	33	45	38	33	43	37	33	31	31	31
9	57	44	36	30	56	43	35	30	42	35	30	41	35	30	40	34	30	28	28	28
10	54	41	33	27	52	40	32	27	39	32	27	38	32	27	37	31	27	25	25	25