

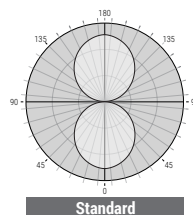
FEATURES

The IP65-rated OLS luminaire provides seamless, uninterrupted linear lighting for demanding environments. Its doorless frame and gasketed lens create a refined, uniform appearance while ensuring protection against dust, water, and impact (IK08). Featuring advanced optics and sealed endcaps, this durable solution maintains a sleek aesthetic. Ideal for hospitality, healthcare, cleanrooms, and outdoor walkways, the OLS delivers dependable performance and design continuity across diverse residential and commercial applications.

LUMENS	2'- Direct: 840L/540L/720L Inirect: 360L/1260L/1680L 4'- Direct: 1680L/2520L/3360L Inirect: 720L/1080L/1440L 8'- Direct: 3360L/5040L/6720L Inirect: 1440L/2160L/2880L
CCT	30K/40K/50K
CRI	85+ Standard
COLOR QUALITY	3 Step MacAdam Ellipses
WIDTHS	4"
LENGTHS	2', 4', 8'
DISTRIBUTION PATTERNS	Standard
MOUNTING	Wall Mount
FINISH	WH (White)
OPERATION HUMIDITY	RH: 5%~95%>2.7KPA
OPERATION TEMPERATURE	-20°C to 50°C (-4°F to 122°F)
DIMMING & CONTROLS	0-10V Flicker Free 1% Dimming Standard (DIM10)
EMERGENCY	10W - Up to 1000L Output
LIFETIME	L70>50,000-hour reported lifetime
PHOTOMETRIC TESTS	In accordance with IES LM79-08, LM80 and TM-30, TM-21

Down					
2'		4'		8'	
LUMENS	WATTS	LUMENS	WATTS	LUMENS	WATTS
840L	7 W	1680L	14 W	3360L	28 W
1260L	10 W	2520L	21 W	5040L	42 W
1680L	14 W	3360L	28 W	6720L	56 W
Up					
2'		4'		8'	
LUMENS	WATTS	LUMENS	WATTS	LUMENS	WATTS
360L	3 W	720L	6 W	1440L	12 W
540L	5 W	1080L	9 W	2160L	18 W
720L	6 W	1440L	12 W	2880L	24 W

Based on 4000K, 85+CRI. Actual wattage may vary +/-5%



CONSTRUCTION

Features a lightweight and durable aluminum body for ease of installation, paired with a rugged polycarbonate lens. IP65-rated silicone gasketing keeps the fixture tightly sealed against water, dust, and environmental pollutants.

An aluminum alloy joining bracket allows two fixtures to be connected together with screws and creates a 3 mm spacing at the back during installation.

ENCLOSED AND GASKETED

The fixture lens assembly and end caps are fully sealed using one-piece silicone gaskets to ensure long-term protection in wet and demanding environments.

OPTICAL

Reflectors are fabricated from 20-gauge aluminum and finished with a post-painted, 95 percent reflective premium coating. The standard flush, frost white snap-in acrylic lens is impact resistant and provides 63 percent light transmission with 99 percent diffusion for smooth, uniform illumination.

MOUNTING

The OLS-WDI-WL-LED is suitable for wet location indoor and outdoor applications. Mounting brackets (sold separately), for Wall mount installation. It comes with stainless steel bracket with PEM studs and sealing washers.

ELECTRICAL INFORMATION

Powered by high-quality constant-current LED drivers rated for 50 to 60 Hz operation at 120 to 277 V input. Drivers produce less than 20 percent total harmonic distortion and maintain a power factor between 0.90 and 1.00.

Male and female 18-gauge, 6-wire plug connectors are included with each luminaire to allow for simple, hassle-free continuous wiring. Each luminaire must be installed male to female.

COLOR TEMPERATURE

Features field-selectable color temperature and lumen output for maximum flexibility. With a simple switch selection, choose from 3000K, 4000K, or 5000K to achieve warm to cool lighting environments.

Selectable lumen packages of 2400, 3600, or 4800 lumens in 4 feet fixture, allow precise adjustment of light output for the application. Factory default 4 feet settings are 5000K and 4800 lumens, based on the selected configuration.

SUPPORT CABLE AND FEED

Power is provided through a ceiling-mounted conductive power feed designed for secure installation and reliable power delivery. The adjustable power cable is supplied in a standard 8 ft length and is field adjustable to accommodate installation conditions.

A 5-conductor cable is standard. Emergency power is available as a 10 W option and is offered only on 4 ft and 8 ft fixtures. Maximum support spacing is 8 ft to ensure proper alignment and long-term stability.

DIMMING AND DRIVER INFORMATION

DIM10 standard flicker-free dimming down to 1% - 0 to 10 Volt control. Compatible with MVOLT 120 V and 277 V systems.

WARRANTY

Five-year warranty covering parts and components. Labor not included.

LISTINGS

cULus listed for wet location.

ETL listed for U.S. and Canada, suitable for wet location and conforming to **UL** standards.

Tested to LM-79 and LM-80 standards by an independent laboratory.

Photometric testing completed in accordance with IES LM-79, TM-30, and TM-21 standards, with calculated lifetime L70 rated at 200,000 hours.

FCC Part 15 compliant for EMI and RFI emissions at 120 VAC and 277 VAC.

RoHS compliant, contains no mercury or lead.

DLC certified and compliant with California Title 24 high-efficacy LED requirements.

BAA Buy American Act compliant, meeting FAR, DFARS, and DOT government procurement requirements.

IP65 rated for ingress protection.

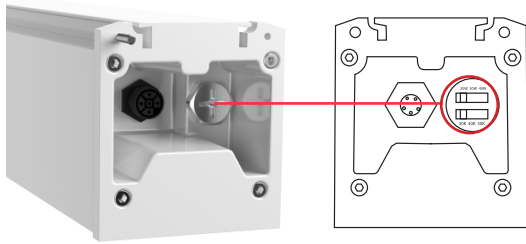
IK08 rated for impact resistance.

Example: **OLS-WDI-WL-LED-4-S-4-2400L/3600L/4800L-DIM10-MVOLT-30K/40K/50K-85-IP65-WH**

SERIES	SIZE	SHAPE	LUMENS	DISTRIBUTION	DIMMING	VOLTAGE	CCT	CRI	IP RATING	FINISH	EMERGENCY
OLS-WDI-WL-LED	4 - 4 Inches	S - Single CR - Continuous Run** 2 feet increment for continues *40 feet Maximum run	2 - 2' 1200L/1800L/2400L 4 - 4' 2400L/3600L/4800L 8 - 8' 4800L/7200L/9600L	(blank) - Standard	DIM10 - 0-10V Dimming	MVOLT	30K/40K/50K	85	IP65 - IP65 Rating	WH - White	0-EMG-LED-10W ¹ ¹ Only available for 4' & 8'

**For continuous run applications, fixtures must be configured using combinations of standard 2 ft, 4 ft, and 8 ft sections only. Refer to the continuous run chart on page 4 for approved configurations.

Lumen and CCT selector



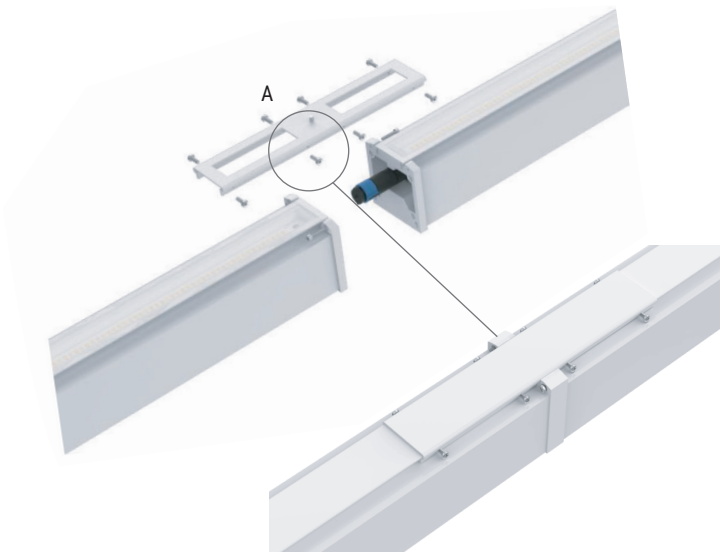
MULTI-LUMEN AND CCT SELECTABLE

Three lumen selectable options: 1200L/1800L/2400L;
2400L/3600L/4800L; and 4800L/7200L/9600L.

Three CCT selectable options: 3000K, 4000K, or 5000K.

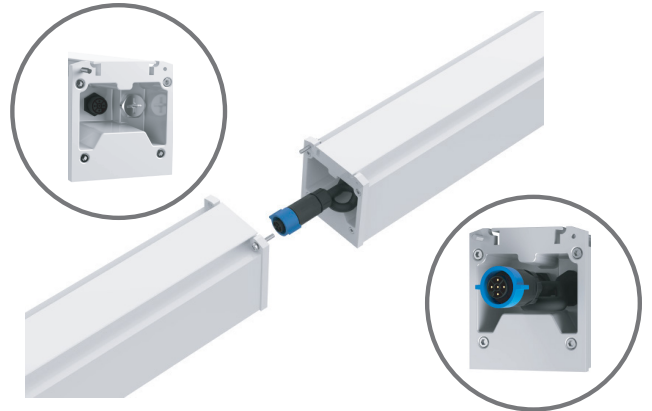
A waterproof screw cover protects the selector switch. The luminaires are equipped with breathable valves that are waterproof and oil-resistant.

CONSTRUCTION



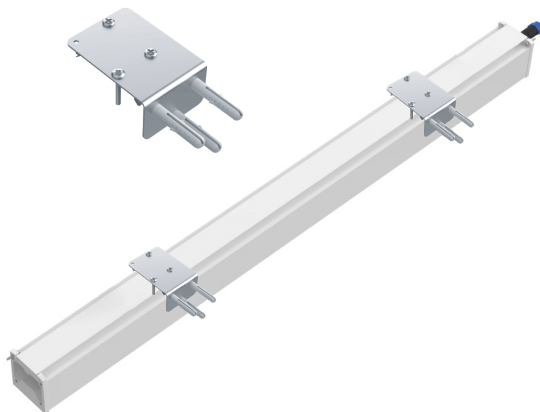
A. Included with continuous run orders.

Waterproof
docking female terminal

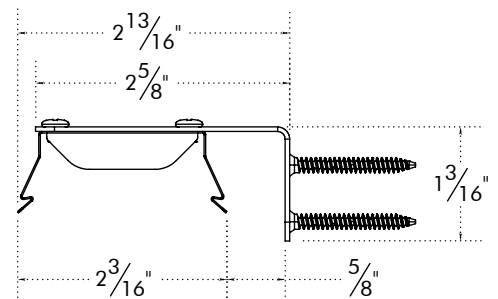


Waterproof
docking male terminal

MOUNTING Kit



L bracket for wall mount



Continuous runs can be assembled up to a maximum of 40 ft. Custom or non-standard lengths are not available. Overall run lengths must be achieved by combining the available fixture lengths. For example, a 6 ft run can be created using one 2 ft and one 4 ft fixture, and a 16 ft run can be created using two 8 ft fixtures. Lengths such as 13 ft or 27 ft are not achievable.

MOUNTING CONFIGURATIONS

SECTIONS			TOTAL LENGTH	
----------	--	--	--------------	--

STANDARD

2ft	4ft	8ft	Nominal	Actual
1x			2'	25.5"
	1x		4'	49.5"
		1x	8'	97.5"

25.5"
2ft

49.5"
4ft

97.5"
8ft

CONTINUOUS RUN CONFIGURATION

1x	1x		6'	75"
1x		1x	10'	123"
	1x	1x	12'	147"
1x	1x	1x	14'	172.5"

75"
2ft 4ft

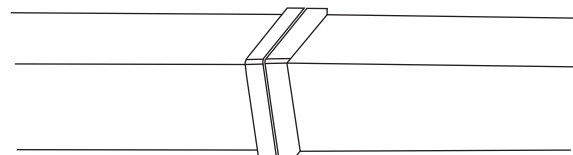
123"
2ft 8ft

147"
4ft 8ft

172.5"
4ft 8ft 2ft

For longer run, please use the same logic. Maximum run 40'.

3D LUMINAIRE JOINING SECTION

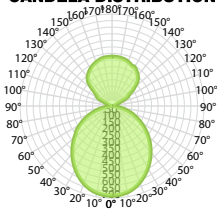


OLS-WDI-WL-LED-4-S-4-D2400L-3600L-4800L-U2400L-3600L-4800L-DIM10-MVOLT-30K-40K-50K-85-IP65-WH (2400L)

TEST NO.:
EL08282556

INPUT WATTS: **20.4** LUMENS: **2831** EFFICACY: **139** BEAM ANGLE: **104** SPACING CRITERIA: **1.19**

CANDELA DISTRIBUTION



CANDELA TABLE

	0°	90°
0°	678	678
10°	667	677
20°	618	638
30°	545	574
40°	456	491
50°	358	396
60°	256	300
70°	156	188
80°	57	78
90°	6	5

LUMENS PER ZONE

ZONE	LUMENS
0° - 10°	64
10° - 20°	182
20° - 30°	272
30° - 40°	321
40° - 50°	325
50° - 60°	289
60° - 70°	217
70° - 80°	120
80° - 90°	30

ZONAL LUMEN SUMMARY

ZONE	LUMENS	% LUMINAIRE
0° - 20°	246	9%
0° - 30°	518	18%
0° - 40°	839	30%
0° - 60°	1453	51%
0° - 80°	1789	63%
60° - 90°	367	13%
0° - 90°	1820	64%
90° - 180°	1011	36%
0° - 180°	2831	100%

CONE OF LIGHT

MOUNTING HEIGHT	FC AT BEAM CENTER	BEAM DIA. 0° -180°	BEAM DIA. 90° -270°
6.0 m	18.8 lx	15.5 m	16.2 m
8.0 m	10.6 lx	20.6 m	21.6 m
10.0 m	6.8 lx	25.8 m	27.0 m
12.0 m	4.7 lx	30.9 m	32.4 m
14.0 m	3.5 lx	36.1 m	37.8 m
16.0 m	2.6 lx	41.2 m	43.3 m
18.0 m	2.1 lx	46.4 m	48.7 m
20.0 m	1.7 lx	51.5 m	54.1 m

INDOOR COEFFICIENTS OF UTILIZATION

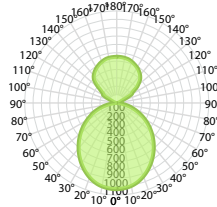
pf	pc	20%																		0%
		80%				70%				50%				30%				10%		
pw	70%	50%	30%	10%	70%	50%	30%	10%	50%	30%	10%	50%	30%	10%	50%	30%	10%	0%		
1	101	96	92	89	95	91	87	84	80	77	75	70	68	66	61	60	58	54		
2	92	84	78	73	86	79	74	69	70	66	62	62	58	55	54	51	49	45		
3	84	74	66	60	78	70	63	58	62	56	52	54	50	47	48	44	42	38		
4	77	65	57	51	72	62	54	49	55	49	44	48	44	40	42	39	36	33		
5	70	58	50	44	66	55	48	42	49	43	38	43	39	35	38	34	31	28		
6	65	52	44	38	61	50	42	36	44	38	33	39	34	30	35	31	27	25		
7	60	47	39	33	56	45	37	32	40	34	29	36	31	27	32	28	24	22		
8	56	43	35	30	52	41	34	28	37	31	26	33	28	24	29	25	22	20		
9	52	39	32	26	49	37	30	25	34	28	23	30	25	22	27	23	20	18		
10	49	36	29	24	46	34	28	23	31	25	21	28	23	20	25	21	18	16		

OLS-WDI-WL-LED-4-S-4-D2400L-3600L-4800L-U2400L-3600L-4800L-DIM10-MVOLT-30K-40K-50K-85-IP65-WH (3600L)

TEST NO.:
EL08282556

INPUT WATTS: **30.5** LUMENS: **4216** EFFICACY: **138** BEAM ANGLE: **104** SPACING CRITERIA: **1.19**

CANDELA DISTRIBUTION



CANDELA TABLE

	0°	90°
0°	1023	1023
10°	1007	1021
20°	934	962
30°	823	866
40°	689	741
50°	542	597
60°	387	439
70°	228	283
80°	86	117
90°	9	7

LUMENS PER ZONE

ZONE	LUMENS
0° - 10°	97
10° - 20°	275
20° - 30°	410
30° - 40°	484
40° - 50°	490
50° - 60°	432
60° - 70°	324
70° - 80°	180
80° - 90°	46

ZONAL LUMEN SUMMARY

ZONE	LUMENS	% LUMINAIRE
0° - 20°	372	9%
0° - 30°	782	19%
0° - 40°	1266	30%
0° - 60°	2189	52%
0° - 80°	2693	64%
60° - 90°	550	13%
0° - 90°	2739	65%
90° - 180°	1478	35%
0° - 180°	4216	100%

CONE OF LIGHT

MOUNTING HEIGHT	FC AT BEAM CENTER	BEAM DIA. 0° -180°	BEAM DIA. 90° -270°
6.0 m	28.4 lx	15.5 m	16.2 m
8.0 m	16.0 lx	20.6 m	21.6 m
10.0 m	10.2 lx	25.8 m	27.0 m
12.0 m	7.1 lx	31.0 m	32.4 m
14.0 m	5.2 lx	36.1 m	37.8 m
16.0 m	4.0 lx	41.3 m	43.2 m
18.0 m	3.2 lx	46.5 m	48.6 m
20.0 m	2.6 lx	51.6 m	54.1 m

INDOOR COEFFICIENTS OF UTILIZATION

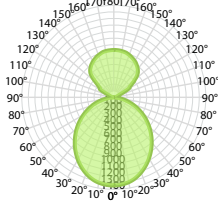
pf	20%																				0%
	80%				70%				50%				30%				10%				
	70%	50%	30%	10%	70%	50%	30%	10%	50%	30%	10%	50%	30%	10%	50%	30%	10%	0%			
pc																					0%
pw	70%	50%	30%	10%	70%	50%	30%	10%	50%	30%	10%	50%	30%	10%	50%	30%	10%	0%			
1	101	97	93	89	95	91	88	84	80	78	75	71	69	67	62	60	59	55			
2	92	84	78	73	86	80	74	69	70	66	62	62	59	56	54	52	50	46			
3	84	74	67	61	79	70	63	58	62	57	52	55	51	47	48	45	42	38			
4	77	66	57	51	72	62	55	49	55	49	45	49	44	40	43	39	36	33			
5	71	59	50	44	66	55	48	42	49	43	39	44	39	35	39	35	32	29			
6	65	53	44	38	61	50	42	37	45	38	34	40	35	31	35	31	28	25			
7	60	47	39	33	56	45	38	32	40	34	30	36	31	27	32	28	25	22			
8	56	43	35	30	52	41	34	29	37	31	26	33	28	24	29	25	22	20			
9	52	39	32	27	49	38	30	26	34	28	24	30	25	22	27	23	20	18			
10	49	36	29	24	46	35	28	23	31	25	21	28	23	20	25	21	18	16			

OLS-WDI-WL-LED-4-S-4-D2400L-3600L-4800L-U2400L-3600L-4800L-DIM10-MVOLT-30K-40K-50K-85-IP65-WH (4800L)

TEST NO.:
EL08282556

INPUT WATTS: **39.8** LUMENS: **5485** EFFICACY: **138** BEAM ANGLE: **104** SPACING CRITERIA: **1.19**

CANDELA DISTRIBUTION



CANDELA TABLE

	0°	90°
0°	1332	1332
10°	1311	1330
20°	1215	1252
30°	1071	1127
40°	897	965
50°	705	776
60°	503	571
70°	297	356
80°	112	151
90°	11	9

LUMENS PER ZONE

ZONE	LUMENS
0° - 10°	126
10° - 20°	358
20° - 30°	534
30° - 40°	630
40° - 50°	638
50° - 60°	563
60° - 70°	419
70° - 80°	233
80° - 90°	59

ZONAL LUMEN SUMMARY

ZONE	LUMENS	% LUMINAIRE
0° - 20°	484	9%
0° - 30°	1018	19%
0° - 40°	1649	30%
0° - 60°	2850	52%
0° - 80°	3502	64%
60° - 90°	711	13%
0° - 90°	3561	65%
90° - 180°	1924	35%
0° - 180°	5485	100%

CONE OF LIGHT

MOUNTING HEIGHT	FC AT BEAM CENTER	BEAM DIA. 0° -180°	BEAM DIA. 90° -270°
6.0 m	37.0 lx	15.5 m	16.2 m
8.0 m	20.8 lx	20.6 m	21.6 m
10.0 m	13.3 lx	25.8 m	27.0 m
12.0 m	9.3 lx	30.9 m	32.4 m
14.0 m	6.8 lx	36.1 m	37.8 m
16.0 m	5.2 lx	41.3 m	43.2 m
18.0 m	4.1 lx	46.4 m	48.6 m
20.0 m	3.3 lx	51.6 m	54.0 m

INDOOR COEFFICIENTS OF UTILIZATION

pf	20%																0%	
pc	80%				70%				50%				30%				10%	0%
	70%	50%	30%	10%	70%	50%	30%	10%	50%	30%	10%	50%	30%	10%	50%	30%	10%	0%
pw	70%	50%	30%	10%	70%	50%	30%	10%	50%	30%	10%	50%	30%	10%	50%	30%	10%	0%
1	101	97	93	89	95	91	88	84	80	78	75	71	69	67	62	60	59	55
2	92	84	78	73	86	80	74	69	70	66	62	62	59	56	54	52	50	46
3	84	74	67	61	79	70	63	58	62	57	52	55	51	47	48	45	42	39
4	77	66	57	51	72	62	55	49	55	49	45	49	44	40	43	39	36	33
5	71	59	50	44	66	55	48	42	49	43	39	44	39	35	39	35	32	29
6	65	53	44	38	61	50	42	37	45	38	34	40	35	31	35	31	28	25
7	60	47	39	34	56	45	38	32	40	34	30	36	31	27	32	28	25	22
8	56	43	35	30	52	41	34	29	37	31	26	33	28	24	29	25	22	20
9	52	39	32	27	49	38	30	26	34	28	24	30	25	22	27	23	20	18
10	49	36	29	24	46	35	28	23	31	25	21	28	23	20	25	21	18	16