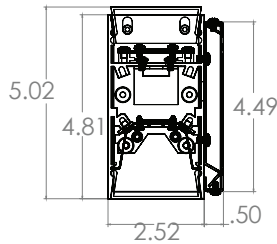
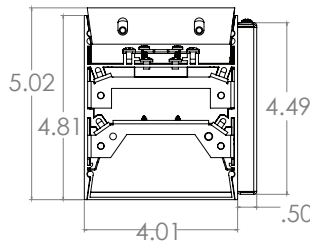




CUSTOM
COLORS



2" PROFILE



4" PROFILE

DIRECT		INDIRECT	
LUMENS/FT	WATTS/FT	LUMENS/FT	WATTS/FT
1000	9.5	1000	9.5
750	6.5	750	6.5
500	4.5	500	4.5

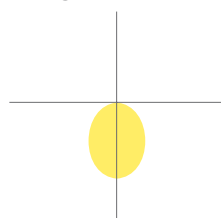


DYNAMIC PLATFORM

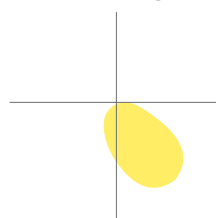
SMART DIM - Dims to Warm with Smart Dim technology simulates traditional incandescent halogen lighting through dimming, while providing the energy efficiency, high performance and longevity of LED luminaires. When the luminaire dims to warm, it makes a smooth transition across the black body radiator curve. Starting with a 100% lumen output at 3000K, down to a 1% lumen output at 1800K, and maintaining a constant CRI of 90+. The result is rich amber tones as the light dims, encouraging relaxation, making it an ideal source for hospitality, healthcare, restaurants, and assisted living applications.

LUMENS PER FOOT	Direct 500, 750, 1000 or Custom Indirect 500, 750, 1000
CCT & DYNAMIC PLATFORMS	100% lumen output at 3000K, down to a 1% lumen output at 1800K
CRI	90+ Standard
COLOR QUALITY	2 Step MacAdam Ellipses
WIDTHS	2", 4"
LENGTHS	2', 4', 6', 8', Custom
DISTRIBUTION PATTERNS	Direct: Standard, Wall Wash Indirect: Standard, Wall Wash
CONFIGURATION PATTERNS & LENGTHS	Single, Continuous, L-Shape
MOUNTING	Wall
FINISH	WH (White), BK (Black), SI (Silver), Custom RAL
DIMMING & CONTROLS	0-10V Flicker Free 1% Dimming Standard (DIM10), LUTH, ELDO10.1, ELDODMX.1, DALI, DIMTR
EMERGENCY	10W - Up to 1000L Output (Bodine BSL310) 20W - Up to 2000L Output (Bodine BSL20)
LIFETIME	L70 at 50,000 Hours
PHOTOMETRIC TESTS	In Accordance with IES LM79-08, LM80 and TM-30, TM-21

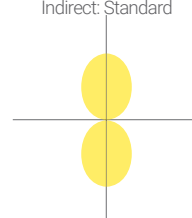
Distribution Pattern:
STANDARD



Distribution Pattern:
WALL WASH



Distribution Pattern:
Direct: Standard
Indirect: Standard





FEATURES

FLEX Architectural LED Wall Mount Linear is "Performance Designed for You", combining the ultimate in flexibility and creativity, with continuous, uniform and glare-free illumination. Available in any combination of direct, indirect, and wall wash, with continuous mounting and fully illuminated corners for a seamless connection from luminaire to luminaire, in a variety of formed angles and shapes. Be inspired to create a long-lasting impression with a unique design that complements corporate offices, educational, commercial, and retail spaces.

OPTICS & PERFORMANCE

Fabricated from 20-gauge aluminum, with mitered corners, and post-painted with 95% reflective premium paint. The optical system delivers high efficiency LED light that passes through a high quality acrylic lens for optimal distribution patterns, creating a glare-free and even distribution. Distributions include Direct (Downlight), Indirect (Uplight) or Wall Wash, with zero light leakage.

CONSTRUCTION

One-piece rigid aluminum extrusion, made of T6063-T5 aluminum, with cast aluminum end caps. A precision cut, smooth white extruded frosted lens with snap in design attaches firmly into the grooves of the body and can be easily removed for access to the driver and LED boards.

For indirect distribution, the lens can be installed flush against the luminaire, or extended off the surface of the luminaire, creating a soft glow of illumination.

OPTICAL ASSEMBLY

Reflector is fabricated from 20-gauge aluminum, and post-painted finish with 95% reflective premium paint. Wall Wash reflectors are positioned at an angle.

DISTRIBUTION PATTERNS & DIFFUSER

Standard Distribution-A high-quality, smooth white frosted efficient acrylic lens is shipped standard for optimal distribution patterns, for most applications, and provides glare-free, even illumination.

Wall Wash Distribution-Illuminates from the ceiling, down, for uniform vertical illumination.

LUMINAIRE CONTROL

Luminaire can be pre-wired for independent 2-circuit control of uplight, downlight, or 1-circuit control for combined up/downlight.

CRM INSTALLATION

For continuous row mounting, the first luminaire in the row will always be the power supply feed. After plugging in the male and female harnesses, which are supplied with each luminaire, they will easily slide together, then secured with two screws from opposite directions in the connecting brackets.

DRIVER ELECTRICAL INFORMATION

Powered by high-quality constant-current power LED drivers which are rated for 50 to 60Hz at 120-277V input, produce less than 20% THD, and have a power factor of .90 to 1.00. Male and female 18-gauge 6 wire plug connectors are included with every luminaire to allow for simple hassle-free continuous wiring, and each luminaire must be installed male to female.

DIMMING & DRIVER INFORMATION

DIM10 - Flicker Free 1% Dimming Standard (DIM10) 0-10V dimming on either MVOLT 120, 277 or 347V.

LUTH - Lutron LDE1 Hi-Lume Eco System. 1% dimming with Soft in Fade to Black dimming technology.

DIMTR - Triac & Electronic low voltage dimming. Available in 120V

ELDO10.1 - EldoLED SoloDrive 0-10V. Dimming down to 0.1%.

DALI - DALI DT6, DT8 dimming down to 1%.

ELDODMX.1 - EldoLED PowerDrive dimming down to 0.1%.

Please see EldoLED website for wiring diagrams and a list of compatible DMX and DALI control systems.

WARRANTY

Five-year warranty for parts and components. (Labor not included)

LISTINGS

c-UL-us - Listed for Feed Through Wiring.

All LED luminaires are rated and tested to LM-79 and LM-80 standards by an independent laboratory.





Example: **OLS-WDI-LED-2-CR24-WDM-35K-18K-D500L-U500L-DIM10-MVOLT**

OLS-WDI-LED

SERIES
OLS-WDI-LED-
Oracle
Wall Mount
Direct/Indirect
LED Linear

WIDTH
2 - 2"
4 - 4"

SHAPE
S - Single Unit
CR - Continuous Run
CUS - Custom
(Consult Factory)

Single Run

2, 4, 6 OR 8"

Cont. Run

XX . YY*

*XX is Length in Feet
YY is Fraction in Inches
e.g. 22.6 is 22 feet and 6 inches

TOTAL RUN

Custom

WARM DIM
WDM-35K-18K

DIRECT LUMENS
D500L - per ft.
D750L - per ft.
D1000L - per ft.

DISTRIBUTION (blank) - Standard
WW - Wall Wash

INDIRECT LUMENS
U500L - per ft.
U750L - per ft.
U1000L - per ft.

DISTRIBUTION (blank) - Standard
WW - Wall Wash
BW - Bat Wing

DIMMING
DIM10 - 0-10V Dimming
LUTH - Lutron EcoSystem
ELDD010.1 - EldoLED 0-10V
DALI - EldoLED DALI Type 8
DIMTR - Available in 120V

CRI
90

VOLTAGE
120
277
MVOLT 347*
Consult factory for details

FINISH
WH - White
SI - Silver
RAL - Consult factory

EMERGENCY
0-EMG-LED-10W
0-EMG-LED-20W
*EMG-LED-20 watt is only for 4" width

OTHER OPTIONS
FBF - Internal Fast Blow Fuse
SBF - Internal Slow Blow Fuse
RIS - Radio Interf. Sensor
USA - Made in America
Compliance

DRAW YOUR CUSTOM SHAPE HERE



1- Luminaire will be shipped with Powerpacks pre-installed, ready to be integrated to designated control systems

2- Luminaire will be shipped with Sensors installed on the luminaire, allowing for individual luminaire control. Luminaires will be ready to be integrated with designated control systems

3- Luminaire will be shipped with Sensors to be remotely installed on the ceiling. Luminaires will be ready to be integrated with designated control systems

BRAND	EASYFIT by EnOcean	LUTRON	enlighted	LEVITON	OSRAM	PHILIPS EasySense	legrand®
CONTROL UNIT	❑ LEDRU LED Relay Zone Controller 0-10V ¹	❑ FCJS-0-10 Lutron Vive 0-10V Individual Control Models ^{1,4}	❑ CU-4E-FMH Fixture Mount Control Unit ^{1,5}	❑ ZL027 -NOW Intellect Power Control Module ^{1,6}	❑ EN-WCM2-ZB-DR Wireless Control Module ^{1,7}	❑ XITANIUM SR LED DRIVER The Philips Advance Xitanium SR LED driver ^{1,8}	❑ LMFC-011 ON/OFF/0-10V dimming fixture controller ^{1,9}
	❑ LEDDU LED Zone Controller 0-10V ¹	❑ FCJS-ECO Lutron Vive Eco-system Individual Control Models ^{1,4}		❑ ZL027 -DLE Intellect Power Control Module ^{1,6}	❑ EN-ALC-ZB-BK-DR Wireless Area Lighting Control Module ^{1,7}		❑ FS-PP-V2 FS-PP Fixture Integrated Sensor Power Pack ^{1,9}
INTEGRATED OCCUPANCY& DAYLIGHT SENSOR	N/A	❑ DFCSJ-OEM-OCC Clear Connect (RF) and Occupancy/ Daylight Sensing ²	❑ SU-5E-IoT IoT Node Micro Sensor ❑ SU-5E-CL Connected Micro Sensor ❑ SU-5E-IL Independent Micro Sensor	❑ ZL00J -TOW Intellect Intelligent Fixture Control System ²	❑ EN-CLM-PIR-DD-ZB SensiLUM™ Wireless Integrated Sensor	❑ SNS200 SNS200 for grouping ²	❑ FD-301 Fixture integrated Daylight Dimming Sensor ²
			❑ SU-5S-H(IoT/CL/IL) Surface Mount Sensor (Must be Specified with CU- 4E-FMH Control Unit) ²	❑ ZL00J-DOW Intellect Intelligent Fixture Control System ²	❑ ZBHA- CLM-DIM-ENC Connected Lighting Module DIM ²	❑ SNS300 SNS300 for networks ²	❑ FS-205 Fixture integrated passive infrared occupancy sensor ²
*WIRELESS OCCUPANCY SENSOR	❑ EOSCU-W-E0 Occupancy Sensor - Ceiling Mounted ³	❑ LRF2-OCR2B-P-WH Ceiling mount 360° ,occupancy/vacancy sensor ³	N/A	N/A	❑ EN-SCPPH- 1500-ZB Wireless Passive Infrared Occupancy and Photo Sensors ³	N/A	❑ LMDC-100 Dual technology PIR Ceiling Mount Occupancy Sensor ³
*WIRELESS DAYLIGHT SENSOR	❑ ELLSU-W-E0 Light Level Sensor - Ceiling Mounted ³	❑ LRF2-DCRB-WH Ceiling-mount daylight sensor ³	N/A	N/A	❑ EN-SCPPH- 1500-ZB Wireless Passive Infrared Occupancy and Photo Sensors ³	N/A	❑ LMLS-400 Single zone switching and dimming digital photosensor ³
*WIRELESS OCCUPANCY & DAYLIGHT SENSOR	N/A	N/A	❑ SU-5E-IoT IoT Node Micro Sensor ❑ SU-5E-CL Connected Micro Sensor ❑ SU-5E-IL Independent Micro Sensor ❑ SU-5S-H(IoT/CL/IL) Surface Mount Sensor (Must be specified with CU- 4E-FMH Control Unit) ³	❑ ZL00J -TOW Intellect Intelligent Fixture Control System ❑ ZL00J-DOW Intellect Intelligent Fixture Control System (Must be specified with ZL027-NOW and ZL00J- DOW Control unit) ³	❑ EN-CLM- PIR-DD-ZB SensiLUM™ Wireless Integrated Sensor ❑ ZBHA- CLM-DIM-ENC Connected Lighting Module DIM (Must be specified with EN-WCM2-ZB-DR or EN-ALC-ZB-BK-DR Control Unit) ³	❑ SNS200-CMP SNS-200 for Grouping ³	N/A
ACCESSORIES	N/A	N/A	❑ TMC-SU-5E Tile Mount Carrier ❑ CBL-5E-CU4-30N 30 inch Sensor cable for CU-4 and IoT Ready ❑ CBL-5E-CU4-7F 7 Foot sensor cable for CU-4 and IoT Ready Driver	N/A	N/A	N/A	N/A
NOTES	N/A	4- Luminaire will be compatible with LUTRON LRF2-OCR2B-PWH Ceiling mount 360deg occupancy/ vacancy sensor & LRF2- DCRB-WH ceiling mount daylight sensor. Sensors must be orderd through Lutron	5- Luminaire will be compatible with ENLIGHTED SU-5E-IoT, SU-5E-CL, SU- 5E-IL, SU-5SH, Sensors	6- Luminaire will be compatible with LEVITON Intellect APP & Keypad room controller	7- Luminaire will be compatible with EN-SCPPH-1500-ZB Wireless passive infrared occupancy and photo sensor	8- Luminaire will be compatible with philips field and wireless switch	9- Luminaire will be compatiable with DLM Room control system LMPB-100. . Sensors must be orderd through Legrand.

