

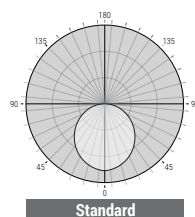
| 2 Feet | | 4 Feet | | 8 Feet | |
|--------|-------|--------|-------|--------|-------|
| LUMENS | WATTS | LUMENS | WATTS | LUMENS | WATTS |
| 1200L | 10 W | 2400L | 20 W | 4800L | 40 W |
| 1800L | 15 W | 3600L | 30 W | 7200L | 60 W |
| 2400L | 20 W | 4800L | 40 W | 9600L | 80 W |

Based on 4000K, 85+CRI. Actual wattage may vary +/-5%

FEATURES

The IP65-rated OLS luminaire provides seamless, uninterrupted linear lighting for demanding environments. Its doorless frame and gasketed lens create a refined, uniform appearance while ensuring protection against dust, water, and impact (IK08). Featuring advanced optics and sealed endcaps, this durable solution maintains a sleek aesthetic. Ideal for hospitality, healthcare, cleanrooms, and outdoor walkways, the OLS delivers dependable performance and design continuity across diverse residential and commercial applications.

| | |
|-----------------------|---|
| LUMENS | 2'- 1200L/1800L/2400L 4'- 2400L/3600L/4800L 8'- 4800L/7200L/9600L |
| CCT | 30K/40K/50K |
| CRI | 85+ Standard |
| COLOR QUALITY | 3 Step MacAdam Ellipses |
| WIDTHS | 4" |
| LENGTHS | 2', 4', 8' |
| DISTRIBUTION PATTERNS | Standard |
| MOUNTING | Wall Mount |
| FINISH | WH (White) |
| OPERATION HUMIDITY | RH: 5%~95%>2.7KPA |
| OPERATION TEMPERATURE | -20°C to 50°C (-4°F to 122°F) |
| DIMMING & CONTROLS | 0-10V Flicker Free 1% Dimming Standard (DIM10) |
| EMERGENCY | 10W - Up to 1000L Output |
| LIFETIME | L70>50,000-hour reported lifetime |
| PHOTOMETRIC TESTS | In accordance with IES LM79-08, LM80 and TM-30, TM-21 |



CONSTRUCTION

Features a lightweight and durable aluminum body for ease of installation, paired with a rugged polycarbonate lens. IP65-rated silicone gasketing keeps the fixture tightly sealed against water, dust, and environmental pollutants.

An aluminum alloy joining bracket allows two fixtures to be connected together with screws and creates a 3 mm spacing at the back during installation.

ENCLOSED AND GASKETED

The fixture lens assembly and end caps are fully sealed using one-piece silicone gaskets to ensure long-term protection in wet and demanding environments.

OPTICAL

Reflectors are fabricated from 20-gauge aluminum and finished with a post-painted, 95 percent reflective premium coating. The standard flush, frost white snap-in acrylic lens is impact resistant and provides 63 percent light transmission with 99 percent diffusion for smooth, uniform illumination.

MOUNTING

The OLS-WD-WL-LED is suitable for wet location indoor and outdoor applications. Mounting brackets, (sold separately), for wall mount installation. It comes with stainless steel bracket with PEM studs and sealing washers.

ELECTRICAL INFORMATION

Powered by high-quality constant-current LED drivers rated for 50 to 60 Hz operation at 120 to 277 V input. Drivers produce less than 20 percent total harmonic distortion and maintain a power factor between 0.90 and 1.00. Male and female 18-gauge, 6-wire plug connectors are included with each luminaire to allow for simple, hassle-free continuous wiring. Each luminaire must be installed male to female.

COLOR TEMPERATURE

Features field-selectable color temperature and lumen output for maximum flexibility. With a simple switch selection, choose from 3000K, 4000K, or 5000K to achieve warm to cool lighting environments.

Selectable lumen packages of 2400, 3600, or 4800 lumens in 4 feet fixture, allow precise adjustment of light output for the application. Factory default 4 feet settings are 5000K and 4800 lumens, based on the selected configuration.

SUPPORT CABLE AND FEED

Power is provided through a ceiling-mounted conductive power feed designed for secure installation and reliable power delivery. The adjustable power cable is supplied in a standard 8 ft length and is field adjustable to accommodate installation conditions.

A 5-conductor cable is standard. Emergency power is available as a 10 W option and is offered only on 4 ft and 8 ft fixtures. Maximum support spacing is 8 ft to ensure proper alignment and long-term stability.

DIMMING AND DRIVER INFORMATION

DIM10 standard flicker-free dimming down to 1% - 0 to 10 Volt control. Compatible with MVOLT 120 V and 277 V systems.

WARRANTY

Five-year warranty covering parts and components. Labor not included.

LISTINGS

cULus listed for wet location.

ETL listed for U.S. and Canada, suitable for wet location and conforming to **UL** standards.

Tested to LM-79 and LM-80 standards by an independent laboratory.

Photometric testing completed in accordance with IES LM-79, TM-30, and TM-21 standards, with calculated lifetime L70 rated at 200,000 hours.

FCC Part 15 compliant for EMI and RFI emissions at 120 VAC and 277 VAC.

RoHS compliant, contains no mercury or lead.

DLC certified and compliant with California Title 24 high-efficacy LED requirements.

BAA Buy American Act compliant, meeting FAR, DFARS, and DOT government procurement requirements.

IP65 rated for ingress protection.

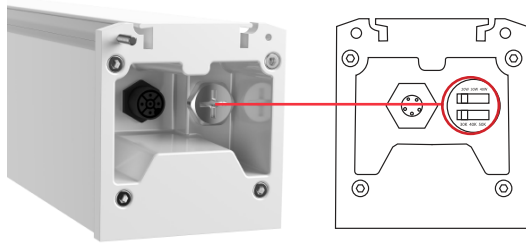
IK08 rated for impact resistance.

Example: **OLS-WD-WL-LED-4-S-4-2400L/3600L/4800L-DIM10-MVOLT-30K/40K/50K-85-IP65-WH**

| SERIES | SIZE | SHAPE | LUMENS | DISTRIBUTION | DIMMING | VOLTAGE | CCT | CRI | IP RATING | FINISH | EMERGENCY |
|---------------|--------------|---|---|--------------------|-----------------------|---------|-------------|-----|--------------------|------------|--|
| OLS-WD-WL-LED | 4 - 4 Inches | S - Single CR - Continuous Run** 2 feet increment for continuous | 2 - 2' 1200L/1800L/2400L 4 - 4' 2400L/3600L/4800L 8 - 8' 4800L/7200L/9600L | (blank) - Standard | DIM10 - 0-10V Dimming | MVOLT | 30K/40K/50K | 85 | IP65 - IP65 Rating | WH - White | O-EMG-LED-10W ¹ ¹ Only available for 4' & 8' |

**For continuous run applications, fixtures must be configured using combinations of standard 2 ft, 4 ft, and 8 ft sections only. Refer to the continuous run chart on page 4 for approved configurations.

Lumen and CCT selector



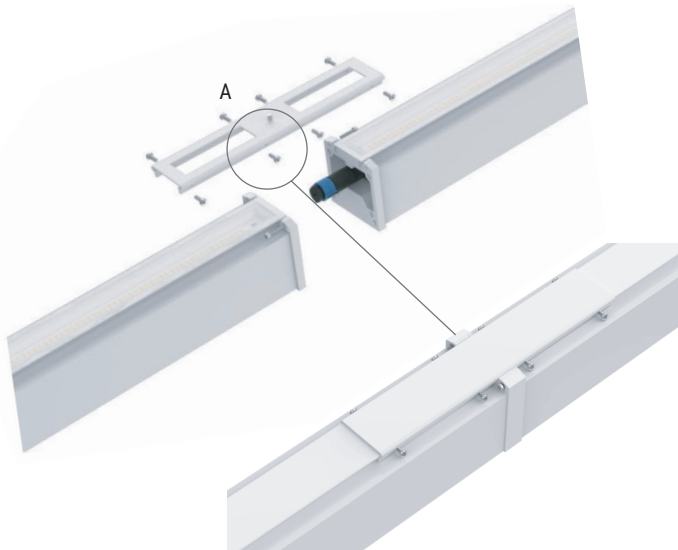
MULTI-LUMEN AND CCT SELECTABLE

Three lumen selectable options: 1200L/1800L/2400L; 2400L/3600L/4800L; and 4800L/7200L/9600L.

Three CCT selectable options: 3000K, 4000K, or 5000K.

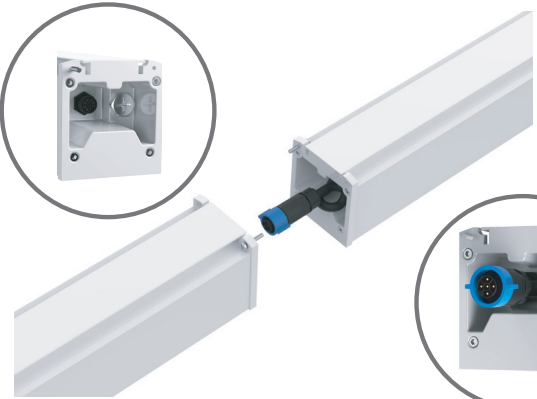
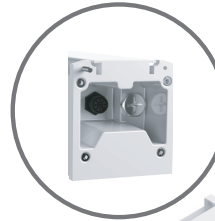
A waterproof screw cover protects the selector switch. The luminaires are equipped with breathable valves that are waterproof and oil-resistant.

CONSTRUCTION



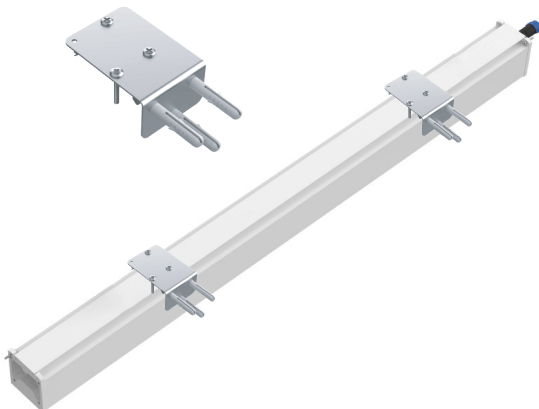
A. Included with continuous run orders.

Waterproof
docking female terminal

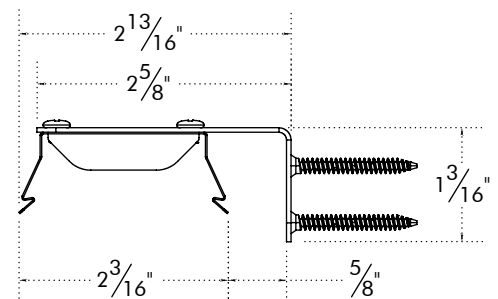


Waterproof
docking male terminal

MOUNTING Kit



L bracket for wall mount



Continuous runs can be assembled up to a maximum of 40 ft. Custom or non-standard lengths are not available. Overall run lengths must be achieved by combining the available fixture lengths. For example, a 6 ft run can be created using one 2 ft and one 4 ft fixture, and a 16 ft run can be created using two 8 ft fixtures. Lengths such as 13 ft or 27 ft are not achievable.

MOUNTING CONFIGURATIONS

| SECTIONS | | | TOTAL LENGTH | |
|----------|-----|-----|--------------|--------|
| STANDARD | | | | |
| 2ft | 4ft | 8ft | Nominal | Actual |
| 1x | | | 2' | 25.5" |
| | 1x | | 4' | 49.5" |
| | | 1x | 8' | 97.5" |

25.5"
2ft

49.5"
4ft

97.5"
8ft

| CONTINUOUS RUN CONFIGURATION | | | | |
|------------------------------|-----|-----|---------|--------|
| 2ft | 4ft | 8ft | Nominal | Actual |
| 1x | 1x | | 6' | 75" |
| 1x | | 1x | 10' | 123" |
| | 1x | 1x | 12' | 147" |
| 1x | 1x | 1x | 14' | 172.5" |

75"
2ft 4ft

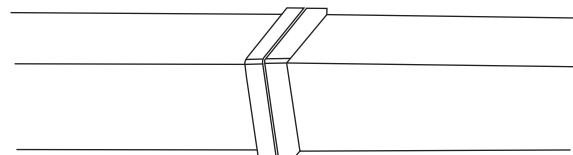
123"
2ft 8ft

147"
4ft 8ft

172.5"
4ft 8ft 2ft

For longer run, please use the same logic. Maximum run 40'.

3D LUMINAIRE JOINING SECTION



OLS-WD-WL-LED-4-S-2-1200L-1800L-2400L-DIM10-MVOLT-30K-40K-50K-85-IP65-WH(1200L)

TEST NO.: EL08282556

INPUT WATTS:10.2

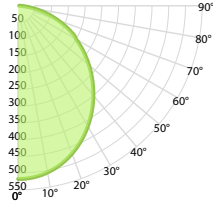
LUMENS:1366

EFFICACY: 134

BEAM ANGLE:105

SPACING CRITERIA: 1.19

CANDELA DISTRIBUTION



CONE OF LIGHT

| MOUNTING HEIGHT | FC AT BEAM CENTER | BEAM DIA. 0°-180° | BEAM DIA. 90°-270° |
|-----------------|-------------------|-------------------|--------------------|
| 6.0 m | 14.4 lx | 15.7 m | 16.1 m |
| 8.0 m | 8.1 lx | 20.9 m | 21.4 m |
| 10.0 m | 5.2 lx | 26.1 m | 26.8 m |
| 12.0 m | 3.6 lx | 31.4 m | 32.2 m |
| 14.0 m | 2.6 lx | 36.6 m | 37.5 m |
| 16.0 m | 2.0 lx | 41.8 m | 42.9 m |
| 18.0 m | 1.6 lx | 47.1 m | 48.2 m |
| 20.0 m | 1.3 lx | 52.3 m | 53.6 m |

CANDELA TABLE

| | 0° | 90° |
|-----|-----|-----|
| 0° | 518 | 516 |
| 10° | 506 | 506 |
| 20° | 470 | 474 |
| 30° | 416 | 422 |
| 40° | 349 | 364 |
| 50° | 276 | 294 |
| 60° | 200 | 212 |
| 70° | 126 | 128 |
| 80° | 50 | 49 |
| 90° | 3 | 2 |

LUMINANCE (cd/sq.m)

| | 0.00° | 90.00° |
|--------|-------|--------|
| 0.00° | 10788 | 10754 |
| 45.00° | 9232 | 9787 |
| 55.00° | 8642 | 9202 |
| 65.00° | 8189 | 8404 |
| 75.00° | 6965 | 7026 |
| 85.00° | 4678 | 4274 |

LUMENS PER ZONE

| ZONE | LUMENS |
|-----------|--------|
| 0° - 10° | 49 |
| 10° - 20° | 138 |
| 20° - 30° | 205 |
| 30° - 40° | 240 |
| 40° - 50° | 245 |
| 50° - 60° | 216 |
| 60° - 70° | 163 |
| 70° - 80° | 89 |
| 80° - 90° | 22 |

ZONAL LUMEN SUMMARY

| ZONE | UMENS | % LUMINAIRE |
|----------|-------|-------------|
| 0° - 20° | 187 | 14% |
| 0° - 30° | 391 | 29% |
| 0° - 40° | 632 | 46% |
| 0° - 60° | 1093 | 80% |
| 0° - 80° | 1345 | 98% |
| 0° - 90° | 1366 | 100% |

INDOOR COEFFICIENTS OF UTILIZATION

| pf | pc | 80% | | | 70% | | | 20% | | | 50% | | | 30% | | | 10% | | | 0% |
|----|-----|-----|-----|-----|-----|-----|-----|-----|-----|-----|-----|-----|-----|-----|-----|-----|-----|-----|-----|----|
| | | 70% | 50% | 30% | 10% | 70% | 50% | 30% | 10% | 50% | 30% | 10% | 50% | 30% | 10% | 50% | 30% | 10% | 50% | 0% |
| 0 | 119 | 119 | 119 | 119 | 116 | 116 | 116 | 116 | 111 | 111 | 111 | 106 | 106 | 106 | 102 | 102 | 102 | 102 | 100 | 0% |
| 1 | 109 | 104 | 100 | 96 | 106 | 102 | 98 | 95 | 98 | 95 | 92 | 94 | 91 | 89 | 90 | 88 | 86 | 84 | 84 | 0% |
| 2 | 99 | 91 | 84 | 79 | 97 | 89 | 83 | 78 | 86 | 80 | 76 | 82 | 78 | 74 | 79 | 76 | 73 | 70 | 70 | 0% |
| 3 | 91 | 80 | 72 | 66 | 88 | 79 | 71 | 65 | 76 | 69 | 64 | 73 | 67 | 63 | 70 | 66 | 62 | 59 | 59 | 0% |
| 4 | 83 | 71 | 62 | 56 | 81 | 70 | 62 | 55 | 67 | 60 | 55 | 65 | 59 | 54 | 63 | 57 | 53 | 51 | 51 | 0% |
| 5 | 76 | 64 | 55 | 48 | 74 | 62 | 54 | 48 | 60 | 53 | 47 | 58 | 52 | 47 | 57 | 51 | 46 | 44 | 44 | 0% |
| 6 | 71 | 57 | 48 | 42 | 69 | 56 | 48 | 42 | 55 | 47 | 41 | 53 | 46 | 41 | 51 | 45 | 41 | 39 | 39 | 0% |
| 7 | 65 | 52 | 43 | 37 | 64 | 51 | 43 | 37 | 50 | 42 | 37 | 48 | 42 | 37 | 47 | 41 | 36 | 34 | 34 | 0% |
| 8 | 61 | 48 | 39 | 33 | 59 | 47 | 39 | 33 | 46 | 38 | 33 | 44 | 38 | 33 | 43 | 37 | 33 | 31 | 31 | 0% |
| 9 | 57 | 44 | 35 | 30 | 56 | 43 | 35 | 30 | 42 | 35 | 30 | 41 | 34 | 30 | 40 | 34 | 29 | 28 | 28 | 0% |
| 10 | 53 | 40 | 32 | 27 | 52 | 40 | 32 | 27 | 39 | 32 | 27 | 38 | 31 | 27 | 37 | 31 | 27 | 25 | 25 | 0% |

OLS-WD-WL-LED-4-S-2-1200L-1800L-2400L-DIM10-MVOLT-30K-40K-50K-85-IP65-WH(1800L)

TEST NO.: EL08282556

INPUT WATTS:15.3

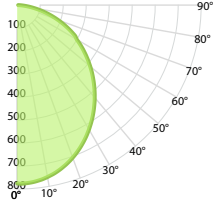
LUMENS:2050

EFFICACY: 134

BEAM ANGLE:105

SPACING CRITERIA: 1.19

CANDELA DISTRIBUTION



CONE OF LIGHT

| MOUNTING HEIGHT | FC AT BEAM CENTER | BEAM DIA. 0°-180° | BEAM DIA. 90°-270° |
|-----------------|-------------------|-------------------|--------------------|
| 6.0 m | 21.5 lx | 15.7 m | 16.1 m |
| 8.0 m | 12.1 lx | 20.9 m | 21.4 m |
| 10.0 m | 7.8 lx | 26.2 m | 26.8 m |
| 12.0 m | 5.4 lx | 31.4 m | 32.2 m |
| 14.0 m | 4.0 lx | 36.6 m | 37.5 m |
| 16.0 m | 3.0 lx | 41.8 m | 42.9 m |
| 18.0 m | 2.4 lx | 47.1 m | 48.2 m |
| 20.0 m | 1.9 lx | 52.3 m | 53.6 m |

CANDELA TABLE

| | 0° | 90° |
|-----|-----|-----|
| 0° | 775 | 775 |
| 10° | 759 | 759 |
| 20° | 706 | 711 |
| 30° | 624 | 634 |
| 40° | 524 | 546 |
| 50° | 414 | 440 |
| 60° | 299 | 319 |
| 70° | 189 | 193 |
| 80° | 75 | 74 |
| 90° | 4 | 2 |

LUMINANCE (cd/sq.m)

| | 0.00° | 90.00° |
|--------|-------|--------|
| 0.00° | 16155 | 16155 |
| 45.00° | 13851 | 14684 |
| 55.00° | 12966 | 13807 |
| 65.00° | 12286 | 12609 |
| 75.00° | 10450 | 10542 |
| 85.00° | 7019 | 6413 |

LUMENS PER ZONE

| ZONE | LUMENS |
|-----------|--------|
| 0° - 10° | 73 |
| 10° - 20° | 207 |
| 20° - 30° | 307 |
| 30° - 40° | 361 |
| 40° - 50° | 368 |
| 50° - 60° | 324 |
| 60° - 70° | 244 |
| 70° - 80° | 134 |
| 80° - 90° | 33 |

ZONAL LUMEN SUMMARY

| ZONE | UMENS | % LUMINAIRE |
|----------|-------|-------------|
| 0° - 20° | 280 | 14% |
| 0° - 30° | 587 | 29% |
| 0° - 40° | 948 | 46% |
| 0° - 60° | 1640 | 80% |
| 0° - 80° | 2017 | 98% |
| 0° - 90° | 2050 | 100% |

INDOOR COEFFICIENTS OF UTILIZATION

| pf | pc | 80% | | | 70% | | | 20% | | | 50% | | | 30% | | | 10% | | | 0% |
|----|-----|-----|-----|-----|-----|-----|-----|-----|-----|-----|-----|-----|-----|-----|-----|-----|-----|-----|-----|----|
| | | 70% | 50% | 30% | 10% | 70% | 50% | 30% | 10% | 50% | 30% | 10% | 50% | 30% | 10% | 50% | 30% | 10% | 50% | 0% |
| 0 | 119 | 119 | 119 | 119 | 119 | 116 | 116 | 116 | 116 | 111 | 111 | 111 | 106 | 106 | 106 | 102 | 102 | 102 | 100 | 0% |
| 1 | 109 | 104 | 100 | 96 | 106 | 102 | 98 | 95 | 98 | 95 | 92 | 94 | 91 | 89 | 90 | 88 | 86 | 84 | 84 | 0% |
| 2 | 99 | 91 | 84 | 79 | 97 | 89 | 83 | 78 | 86 | 80 | 76 | 82 | 78 | 74 | 79 | 76 | 73 | 70 | 70 | 0% |
| 3 | 91 | 80 | 72 | 66 | 88 | 79 | 71 | 65 | 76 | 69 | 64 | 73 | 67 | 63 | 70 | 66 | 62 | 59 | 59 | 0% |
| 4 | 83 | 71 | 62 | 56 | 81 | 70 | 62 | 55 | 67 | 60 | 55 | 65 | 59 | 54 | 63 | 57 | 53 | 51 | 51 | 0% |
| 5 | 76 | 64 | 55 | 48 | 74 | 62 | 54 | 48 | 60 | 53 | 47 | 58 | 52 | 47 | 57 | 51 | 46 | 44 | 44 | 0% |
| 6 | 71 | 57 | 48 | 42 | 69 | 56 | 48 | 42 | 55 | 47 | 41 | 53 | 46 | 41 | 51 | 45 | 41 | 39 | 39 | 0% |
| 7 | 65 | 52 | 43 | 37 | 64 | 51 | 43 | 37 | 50 | 42 | 37 | 48 | 42 | 37 | 47 | 41 | 36 | 34 | 34 | 0% |
| 8 | 61 | 48 | 39 | 33 | 59 | 47 | 39 | 33 | 46 | 38 | 33 | 44 | 38 | 33 | 43 | 37 | 33 | 31 | 31 | 0% |
| 9 | 57 | 44 | 35 | 30 | 56 | 43 | 35 | 30 | 42 | 35 | 30 | 41 | 34 | 30 | 40 | 34 | 29 | 28 | 28 | 0% |
| 10 | 53 | 40 | 32 | 27 | 52 | 40 | 32 | 27 | 39 | 32 | 27 | 38 | 31 | 27 | 37 | 31 | 27 | 25 | 25 | 0% |

OLS-WD-WL-LED-4-S-2-1200L-1800L-2400L-DIM10-MVOLT-30K-40K-50K-85-IP65-WH(2400L)

TEST NO.: EL08282556

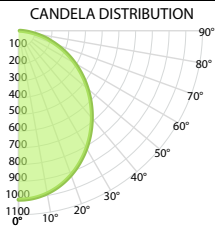
INPUT WATTS:19.7

LUMENS:2649

EFFICACY: 134

BEAM ANGLE:104

SPACING CRITERIA: 1.19



CANDELA TABLE

| | 0° | 90° |
|-----|------|------|
| 0° | 1010 | 1008 |
| 10° | 987 | 987 |
| 20° | 918 | 924 |
| 30° | 812 | 824 |
| 40° | 682 | 698 |
| 50° | 539 | 555 |
| 60° | 390 | 402 |
| 70° | 238 | 250 |
| 80° | 98 | 96 |
| 90° | 7 | 4 |

LUMINANCE (cd/sq.m)

| | 0.00° | 90.00° |
|--------|-------|--------|
| 0.00° | 21045 | 20992 |
| 45.00° | 18020 | 18502 |
| 55.00° | 16880 | 17410 |
| 65.00° | 15473 | 16389 |
| 75.00° | 13665 | 13703 |
| 85.00° | 9365 | 8407 |

LUMENS PER ZONE

| ZONE | LUMENS |
|-----------|--------|
| 0° - 10° | 95 |
| 10° - 20° | 269 |
| 20° - 30° | 399 |
| 30° - 40° | 468 |
| 40° - 50° | 471 |
| 50° - 60° | 415 |
| 60° - 70° | 312 |
| 70° - 80° | 175 |
| 80° - 90° | 45 |

ZONAL LUMEN SUMMARY

| ZONE | UMENS | % LUMINAIRE |
|----------|-------|-------------|
| 0° - 20° | 364 | 14% |
| 0° - 30° | 763 | 29% |
| 0° - 40° | 1231 | 46% |
| 0° - 60° | 2118 | 80% |
| 0° - 80° | 2605 | 98% |
| 0° - 90° | 2649 | 100% |

CONE OF LIGHT

INDOOR COEFFICIENTS OF UTILIZATION

| MOUNTING HEIGHT | FC AT BEAM CENTER | BEAM DIA. 0°-180° | BEAM DIA. 90°-270° |
|-----------------|-------------------|-------------------|--------------------|
| 6.0 m | 28.1 lx | 15.4 m | 15.8 m |
| 8.0 m | 15.8 lx | 20.6 m | 21.1 m |
| 10.0 m | 10.1 lx | 25.7 m | 26.3 m |
| 12.0 m | 7.0 lx | 30.8 m | 31.6 m |
| 14.0 m | 5.2 lx | 36.0 m | 36.9 m |
| 16.0 m | 3.9 lx | 41.1 m | 42.1 m |
| 18.0 m | 3.1 lx | 46.2 m | 47.4 m |
| 20.0 m | 2.5 lx | 51.4 m | 52.7 m |

| pf pc pw | 80% | | | | | | | | | | 70% | | | | | | | | | | 20% | | | | | | | | | | 0% | | | | | | | | | |
|----------------|-----|-----|-----|-----|-----|-----|-----|-----|-----|-----|-----|-----|-----|-----|-----|-----|-----|-----|-----|-----|-----|-----|-----|-----|-----|-----|-----|-----|-----|-----|-----|-----|-----|-----|-----|-----|----|----|--|--|
| | 70% | 50% | 30% | 10% | 70% | 50% | 30% | 10% | 50% | 30% | 10% | 50% | 30% | 10% | 50% | 30% | 10% | 50% | 30% | 10% | 50% | 30% | 10% | 50% | 30% | 10% | 50% | 30% | 10% | 50% | 30% | 10% | 50% | 30% | 10% | 0% | | | | |
| 0 | 119 | 119 | 119 | 119 | 116 | 116 | 116 | 116 | 111 | 111 | 111 | 106 | 106 | 106 | 102 | 102 | 102 | 102 | 100 | 100 | 100 | 100 | 100 | 100 | 100 | 100 | 100 | 100 | 100 | 100 | 100 | 100 | 100 | 100 | 100 | 100 | 0% | | | |
| 1 | 109 | 104 | 100 | 96 | 106 | 102 | 98 | 95 | 98 | 95 | 92 | 94 | 91 | 89 | 90 | 88 | 86 | 84 | 84 | 84 | 84 | 84 | 84 | 84 | 84 | 84 | 84 | 84 | 84 | 84 | 84 | 84 | 84 | 84 | 84 | 84 | 84 | 0% | | |
| 2 | 99 | 91 | 84 | 79 | 97 | 89 | 83 | 78 | 86 | 80 | 76 | 82 | 78 | 74 | 79 | 76 | 73 | 70 | 70 | 70 | 70 | 70 | 70 | 70 | 70 | 70 | 70 | 70 | 70 | 70 | 70 | 70 | 70 | 70 | 70 | 70 | 0% | | | |
| 3 | 91 | 80 | 72 | 66 | 88 | 79 | 71 | 65 | 76 | 69 | 64 | 73 | 67 | 63 | 70 | 66 | 62 | 59 | 59 | 59 | 59 | 59 | 59 | 59 | 59 | 59 | 59 | 59 | 59 | 59 | 59 | 59 | 59 | 59 | 59 | 59 | 0% | | | |
| 4 | 83 | 71 | 62 | 56 | 81 | 70 | 62 | 55 | 67 | 60 | 55 | 65 | 59 | 54 | 63 | 57 | 53 | 51 | 51 | 51 | 51 | 51 | 51 | 51 | 51 | 51 | 51 | 51 | 51 | 51 | 51 | 51 | 51 | 51 | 51 | 51 | 0% | | | |
| 5 | 76 | 64 | 55 | 48 | 74 | 63 | 54 | 48 | 60 | 53 | 47 | 58 | 52 | 47 | 57 | 51 | 46 | 44 | 44 | 44 | 44 | 44 | 44 | 44 | 44 | 44 | 44 | 44 | 44 | 44 | 44 | 44 | 44 | 44 | 44 | 44 | 0% | | | |
| 6 | 71 | 57 | 48 | 42 | 69 | 56 | 48 | 42 | 55 | 47 | 42 | 53 | 46 | 41 | 51 | 45 | 41 | 39 | 39 | 39 | 39 | 39 | 39 | 39 | 39 | 39 | 39 | 39 | 39 | 39 | 39 | 39 | 39 | 39 | 39 | 39 | 0% | | | |
| 7 | 66 | 52 | 43 | 37 | 64 | 51 | 43 | 37 | 50 | 42 | 37 | 48 | 42 | 37 | 47 | 41 | 36 | 34 | 34 | 34 | 34 | 34 | 34 | 34 | 34 | 34 | 34 | 34 | 34 | 34 | 34 | 34 | 34 | 34 | 34 | 34 | 0% | | | |
| 8 | 61 | 48 | 39 | 33 | 59 | 47 | 39 | 33 | 46 | 38 | 33 | 44 | 38 | 33 | 43 | 37 | 33 | 31 | 31 | 31 | 31 | 31 | 31 | 31 | 31 | 31 | 31 | 31 | 31 | 31 | 31 | 31 | 31 | 31 | 31 | 31 | 0% | | | |
| 9 | 57 | 44 | 36 | 30 | 56 | 43 | 35 | 30 | 42 | 35 | 30 | 41 | 34 | 30 | 40 | 34 | 29 | 28 | 28 | 28 | 28 | 28 | 28 | 28 | 28 | 28 | 28 | 28 | 28 | 28 | 28 | 28 | 28 | 28 | 28 | 28 | 0% | | | |
| 10 | 54 | 40 | 33 | 27 | 52 | 40 | 32 | 27 | 39 | 32 | 27 | 38 | 32 | 27 | 37 | 31 | 27 | 25 | 25 | 25 | 25 | 25 | 25 | 25 | 25 | 25 | 25 | 25 | 25 | 25 | 25 | 25 | 25 | 25 | 25 | 25 | 0% | | | |