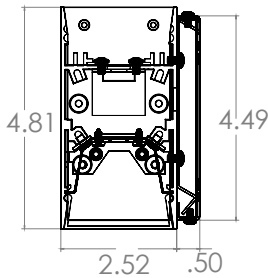
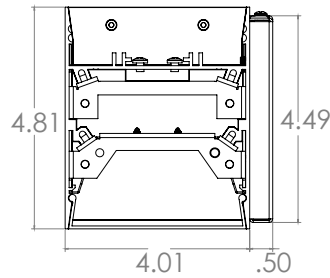




CUSTOM
COLORS



2" PROFILE



4" PROFILE

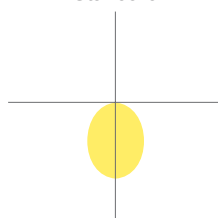
DYNAMIC PLATFORM

SMART DIM - Dims to Warm with Smart Dim technology simulates traditional incandescent halogen lighting through dimming, while providing the energy efficiency, high performance and longevity of LED luminaires. When the luminaire dims to warm, it makes a smooth transition across the black body radiator curve. Starting with a 100% lumen output at 3000K, down to a 1% lumen output at 1800K, and maintaining a constant CRI of 90+. The result is rich amber tones as the light dims, encouraging relaxation, making it an ideal source for hospitality, healthcare, restaurants, and assisted living applications.

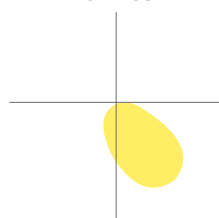
LUMENS PER FOOT	500, 750, 1000
CCT & DYNAMIC PLATFORMS	100% lumen output at 3000K, down to a 1% lumen output at 1800K
CRI	90+ Standard
COLOR QUALITY	2 Step MacAdam Ellipse
WIDTHS	2", 4"
LENGTHS	2', 4', 6', 8', Custom
DISTRIBUTION PATTERNS	Standard, Wall Wash
CONFIGURATION PATTERNS & LENGTHS	Single, Continuous, Square, Rectangular, L-Shape, Custom with 90, 60, or 45 Deg Angles
MOUNTING	Wall
FINISH	WH (White), BK (Black), SI (Silver), Custom RAL
DIMMING & CONTROLS	0-10V Flicker Free 1% Dimming Standard (DIM10), LUTH, ELDO10.1, ELDODMX.1, DALI, DIMTR
EMERGENCY	10W - Up to 1000L Output (Bodine BSL310) 20W - Up to 2000L Output (Bodine BSL20)
LIFETIME	L70 at 50,000 Hours
PHOTOMETRIC TESTS	In Accordance with IES LM79-08, LM80 and TM-30, TM-21



Distribution Pattern:
Standard



Distribution Pattern:
Wall Wash





FEATURES

FLEX Architectural LED Wall MountLinear delivers an endless array of flexibility, from straight runs to complex 90° turns. Available in small standard profiles of 2" and 4", or custom lengths, it accommodates most surfaces and installations, with fully illuminated corners to provide seamless, continuous lengths of light. Be inspired to create a long-lasting impression with a unique design that complements corporate offices, educational, commercial, and retail spaces.

OPTICS & PERFORMANCE

Fabricated from 20-gauge aluminum, with mitered corners, and post-painted with 95% reflective premium paint. The optical system delivers high efficiency LED light that passes through a high quality acrylic lens for optimal distribution patterns, creating a glare-free and even distribution. Distributions include Direct Downlight or Wall Wash with zero light leakage.

CONSTRUCTION

One-piece rigid aluminum extrusion, made of T6063-T5 aluminum, with cast aluminum end caps. A precision cut, smooth white extruded frosted lens with snap in design attaches firmly into the grooves of the body and can be easily removed for access to the driver and LED boards.

OPTICAL ASSEMBLY

Reflector is fabricated from 20-gauge aluminum, and post-painted finish with 95% reflective premium paint. Wall Wash reflectors are positioned at an angle.

DISTRIBUTION PATTERNS & DIFFUSER

Standard Distribution-A high-quality, smooth white frosted efficient acrylic lens is shipped standard for optimal distribution patterns, for most applications, and provides glare-free, even illumination. Wall Wash Distribution-Illuminates from the ceiling, down, for uniform vertical illumination.

CRM INSTALLATION

For continuous row mounting, the first luminaire in the row will always be the power supply feed. After plugging in the male and female harnesses, which are supplied with each luminaire, they will easily slide together, then secured with two screws from opposite directions in the connecting brackets.

DRIVER ELECTRICAL INFORMATION

Powered by high-quality constant-current power LED drivers which are rated for 50 to 60Hz at 120-277V input, produce less than 20% THD, and have a power factor of .90 to 1.00. Male and female 18-gauge 6 wire plug connectors are included with every luminaire to allow for simple hassle-free continuous wiring, and each luminaire must be installed male to female.

DIMMING & DRIVER INFORMATION

DIM10 - Flicker Free 1% Dimming Standard (DIM10) 0-10V dimming on either **MVOLT** 120, 277 or 347V.

LUTH - Lutron LDE1 Hi-Lume Eco System. 1% dimming with Soft in Fade to Black dimming technology.

ELDO10.1 - EldoLED SoloDrive 0-10V. Dimming down to 0.1%. Available on all fixtures up to 100 watts.

DALI - DALI DT6, DT8 dimming down to 1%. Available on all fixtures up to 100 watts.

ELDODMX - EldoLED PowerDrive dimming down to 0.1%. Available on all fixtures up to 100 watts.

Please see EldoLED website for wiring diagrams and a list of compatible DMX and DALI control systems.

DIMTR -Triac & Electronic low voltage dimming. Available in 120V.

WARRANTY

Five-year warranty for parts and components. (Labor not included)

LISTINGS

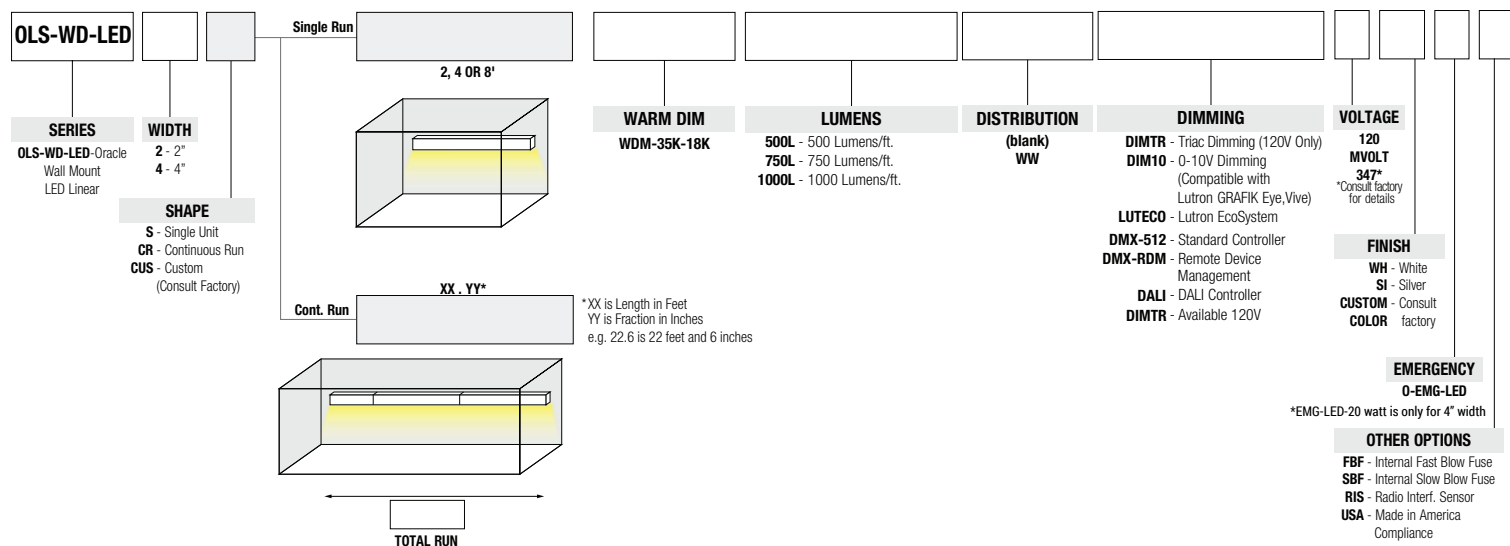
c-UL-us - Listed for Feed Through Wiring.

All LED luminaires are rated and tested to LM-79 and LM-80 standards by an independent laboratory.





Example: OLS-WD-LED-2-CR24 -WDM-35K-18K-500L-DIM10-MVOLT





CONTROL OPTIONS

With the integration of controls, Elite Lighting now offers its products with controls-ready performance that increases energy efficiency, smarter space planning, and the enhancement of safety and productivity in the workplace. By utilizing these controls, Elite Lighting luminaires enable your customer's facility to run smarter, with the use of an easily controlled system through any platform.

Luminaire will be shipped with Powerpacks pre-installed, ready to be integrated to designated control systems

Luminaire will be shipped with Sensors installed on the luminaire, allowing for individual luminaire control. Luminaires will be ready to be integrated with designated control systems

Luminaire will be shipped with Sensors to be remotely installed on the ceiling. Luminaires will be ready to be integrated with designated control systems

BRAND	EASYFIT by EnOcean	LUTRON	enlighted	LEVITON	PHILIPS EasySense	legrand®
POWER PACK	<input type="checkbox"/> LEDRU - LED Relay Zone Controller 0-10V	<input type="checkbox"/> Lutron Vive FCJS- 010 - Individual Luminaire Control, 0 to 10V	<input type="checkbox"/> CU-E3-1R	<input type="checkbox"/> ZL027-NOW - Power control module	<input type="checkbox"/> SRB	<input type="checkbox"/> LMFC-011
	<input type="checkbox"/> LEDDU - LED Zone Controller 0-10V	<input type="checkbox"/> Lutron Vive FCJS-ECO - Individual Luminaire Control, Eco System <input type="checkbox"/> Philips Driver XSR <input type="checkbox"/> OSRAM Driver DEXAL	<input type="checkbox"/> SR Driver	<input type="checkbox"/> ZL027-DLE	<input type="checkbox"/> Philips Driver XSR	<input type="checkbox"/> FS-PP-V2
REMOTE SENSOR	-	<input type="checkbox"/> DFCSJ-OEM-RF <input type="checkbox"/> DFCSJ-OEM-OCC	<input type="checkbox"/> SU-4E-01 <input type="checkbox"/> SU-5E-CL	<input type="checkbox"/> ZL00J-DOW - Sensor control module (Downlight Luminaire)	<input type="checkbox"/> SNS200 <input type="checkbox"/> SNS200-CMP	-

