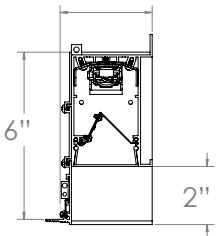
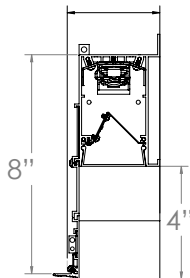


2" PROFILES

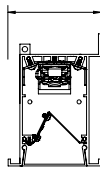
2" depth Shield



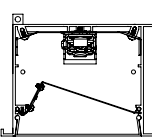
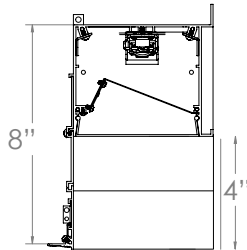
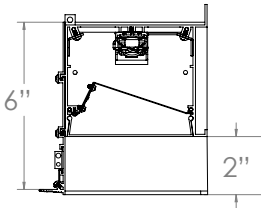
4" depth Shield



Flash depth Shield



4" PROFILES



| LUMENS/FT | WATTS/FT |
|-----------|----------|
| 1000 | 9.5 |
| 750 | 6.5 |
| 500 | 4.5 |

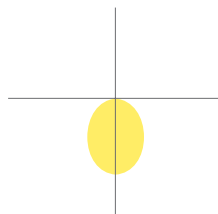


FEATURES

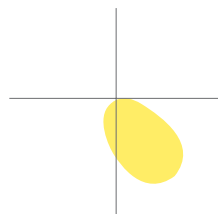
The OLS Perimeter provides a continuous glow at transition between ceiling and wall. OLS Perimeter is hidden in slot between ceiling and wall, presenting complete invisibility of lamps. 4" or 6" regress options, and can sit flush in ceiling. Accommodates drywall, grid, suspended, and hard ceiling. Available in custom shapes including wall-to-ceiling, 90° corner continuous runs, tees, crosses, and corners of various angles. Ambient lighting perfect for office, education, library, commercial, and retail applications.

| | |
|----------------------------------|---|
| LUMENS PER FOOT | 500, 750, 1000 or Custom |
| CCT & DYNAMIC PLATFORMS | 27K, 30K, 35K, 40K, 50K, Tunable White, |
| CRI | 85+ Standard, 90+ |
| COLOR QUALITY | 3 Step MacAdam Ellipses |
| WIDTHS | 2", 4" |
| LENGTHS | 2', 4', 6', 8', Continuous with 1" Increments |
| DISTRIBUTION PATTERNS | Standard, Wall Wash |
| CONFIGURATION PATTERNS & LENGTHS | Single, Continous, Square, Rectangular, L-Shape, Custom with 90, 60, or 45 ° Angles |
| MOUNTING | Ceiling, Wall |
| FINISH | WH (White) |
| DIMMING & CONTROLS | 0-10V Flicker Free 1% Dimming Standard (DIM10), LUTH, LUT2W, DIMST, ELDO10.1, ELDODMX.1, DALI.1 |
| EMERGENCY | 10W - Up to 1000L Output (Bodine BSL310) 20W - Up to 2000L Output (Bodine BSL20) |
| LIFETIME | L70 at 50,000 Hours |
| PHOTOMETRIC TESTS | In Accordance with IES LM79-08, LM80 and TM-30, TM-21 |

Distribution Pattern:
Standard



Distribution Pattern:
Wall Wash



OPTICS & PERFORMANCE

Fabricated from 20-gauge aluminum, with mitered corners, and post-painted with 95% reflective premium paint. The optical system delivers high efficiency LED light that passes through a high-quality acrylic lens for optimal distribution patterns, creating a glare-free and even distribution. Distributions include Direct Downlight or Wall Wash, with zero light leakage.

CONSTRUCTION

One-piece rigid aluminum extrusion, flanged or flange-less, made of T6063-T5 aluminum, cast aluminum end caps. Extruded frosted snap-in lens is easy to pop in and out for quick access to driver and LED boards.

OPTICAL ASSEMBLY

Highly efficient LEDs with side-kicking MIRO reflectors that pass through a smooth acrylic lens, creating glare-free, even distribution. MIRO reflectors deliver 95% reflectivity and smooth acrylic lens provides durability and zero pixilation.

DISTRIBUTION PATTERNS & DIFFUSER

Standard Distribution provides glare-free, even illumination. Wall Wash Distribution-Illuminates from the ceiling, down, for uniform vertical illumination.

CRM INSTALLATION

For continuous row mounting, the first luminaire in the row will always be the power supply feed. After plugging in the male and female harnesses, which are supplied with each luminaire, they will easily slide together, then secured with two screws from opposite directions in the connecting brackets.

DRIVER ELECTRICAL INFORMATION

Powered by high-quality constant-current power LED drivers which are rated for 50 to 60Hz at 120-277V input, produce less than 20% THD, and have a power factor of .90 to 1.00. Male and female 18-gauge 6 wire plug connectors are included with every fixture. Each fixture must be installed male to female.

MOUNTING

The OLS-PR-LED is available in multiple recessed options. Flange kit is available for recessed dry wall application and bracket accessories are available for T-bar application. Also available in pendant and wall mount. Single or tandem mounting for field-adjustable continuous runs made easy with quick connectors.

LED DYNAMIC PLATFORM OPTIONS

Tunable White with Smart White Technology utilizing the Lumenetix Platform allows you to color tune the luminaire via various controls. Create the perfect environment for the desired use of the space, while maintaining a CRI of 90+ across the tunable range of 8000 to 1650K. (Click here for more details)

EMERGENCY BACK-UP BATTERY

Emergency back-up battery comes pre-installed on the luminaire and emergency push button is installed on the luminaire for easy access

DIMMING & DRIVER INFORMATION

DIM10 - Flicker Free 1% Dimming Standard (DIM10) 0-10V dimming on either MVOLT 120, 277 or 347V.

LUT2W - Lutron LTEA2W Hi-Lume 1%. 2-wire LED Driver Forward Phase Control, 1% dimming in 120V only.

LUTH - Lutron LDE1 Hi-Lume Eco System. 1% dimming with Soft in Fade to Black dimming technology.

ELDO10.1 - EldoLED SoloDrive 0-10V. Dimming down to 0.1%.

DALI - DALI DT6, DT8 dimming down to 1%.

ELDODMX - EldoLED PowerDrive dimming down to 0.1%.

Please see EldoLED website for wiring diagrams and a list of compatible DMX and DALI control systems.

DIMST - Step Dimming

WARRANTY

Five-year warranty for parts and components. (Labor not included)

OPTIONS

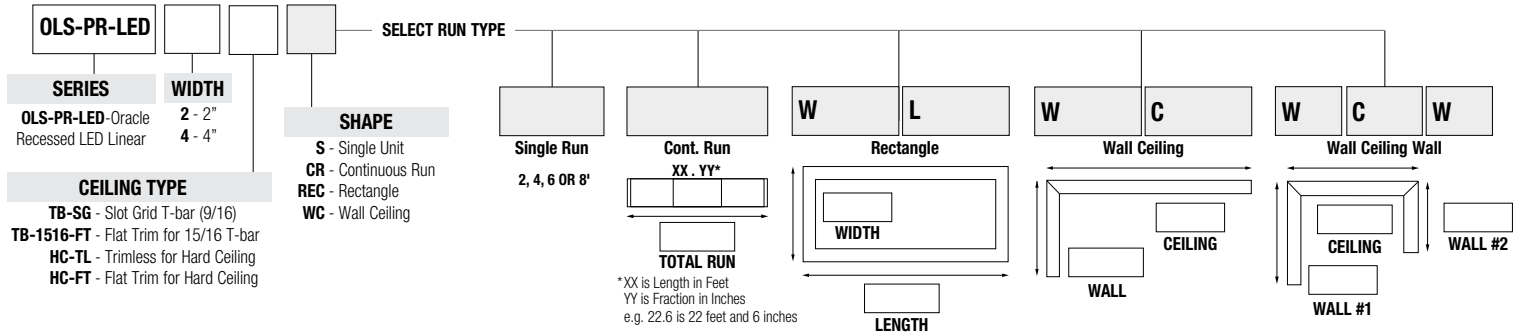
Can be shipped preinstalled with daylight harvesting controls, occupancy sensors, and/or power packs. Available manufacturer options include Leviton, Wattstopper, Hubble Automation, and others.

LISTINGS

c-UL-us - Listed for Feed Through Wiring.

All LED luminaires are rated and tested to LM-79 and LM-80 standards by an independent laboratory. Listed for DLC, California Title 24 compliant.

Example: **OLS-PR-LED-2-TB-SG-REC-W8-L6-500L-DIM10-MVOLT-30K-85-WH**



| LUMENS | DISTRIBUTION | DIMMING | VOLTAGE | CCT | CRI | FINISH | EMERGENCY | OTHER OPTIONS | SHIELDING | MOUNTING |
|---|--------------------------------------|--|-----------------------------|--------------------------|----------|------------|--------------------------------|---|---------------------|--------------|
| 500L - per ft. 750L - per ft. 1000L - per ft. | (blank) - Standard WW - Wall Wash | DIM10 - 0-10V Dimming DIMST - Step Dimming LUTH - Lutron HiLum LUT2W - Lutron 2-Wire ELDO10.1 - EldoLED 0-10V DALI.1 - EldoLED DALI Type 8 ELDODMX.1 - EldoLED DMX | 120 277 MVOLT 347* | 30K 35K 40K 50K | 85 90 | WH - White | 0-EMG-LED-10W 0-EMG-LED-20W | FBF - Internal Fast Blow Fuse SBF - Internal Slow Blow Fuse RIS - Radio Interference Sensor USA - Made in America Compliance | Flash 0 2" 4" | Wall Bracket |

- LUT2W available in 120V
- ELDO10, ELDODMX, LUTH available 120-277

