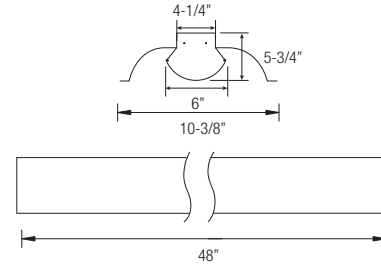


### T8/T5 FLUORESCENT DIRECT/INDIRECT LUMINAIRE (SURFACE OR SUSPENDED MOUNT)



#### APPLICATION:

The OB2DI Series Surface Mount Direct/Indirect Luminaire is the "Perfect" lighting solution for interior office, commercial and retail installations. Designed for general or task lighting. This economical alternative approach is the answer to meeting restrictive budgets with a modern lighting design.

#### PRODUCT FEATURES:

- Heavy-duty 20-gauge steel utilized throughout for durability and code compliance
- Painted high-gloss baked white enamel
- Pretreated with five-stage iron phosphate process to ensure superior paint adhesion
- Standard reflector comes in white highly reflective finish
- Shallow design is ideal for commercial and industrial spaces requiring general illumination
- Suitable for dry and damp environments
- Thermally protected, self-resetting, Class P, NPF, non-PCB and UL listed ballast
- Lightweight design enables for quick, easy installation
- NEC required ballast disconnect is standard
- CEE qualified ballast comes standard on most fixture options (Consult factory for details)

#### OPTIONS AND ACCESSORIES:

- Emergency ballast, motion sensors
- Reflector choices and lens option

#### LISTING

UL/C-UL listed to US and Canadian standard

#### WARRANTY

Guaranteed for one year against mechanical defects

T8/T5  
OB2DI

### Ordering Information > Example: 4-OB2DI-2-32-T8-ADV-10-MVOLT-EMG-T8-BX-700

4	OB2DI							
---	-------	--	--	--	--	--	--	--

FIXTURE SIZE	SERIES	WATTAGE	VOLTAGE <sup>1</sup>	# OF BALLAST	BALLAST FACTOR	REFLECTOR
4 - 4'	<b>OB2DI</b> -Oracle Surface Mount Direct/Indirect w/ Perforated Shield	<b>4' FIXTURE</b> 2-32-T8 (2 lamps/32W/T8) 2-28-T5 (2 lamps/28W/T5) 2-54-T5HO (2 lamps/54W/T5HO)	(Blank) - MVOLT (120/277) <b>120</b> <b>277</b> <b>347</b>	(Blank) - 1 Ballast 2 - 2 Ballasts	(Blank) - Normal BF <b>HBF</b> - High BF <b>LBF</b> - Low BF	(Blank) - White <b>OB2DI-WSU</b> - White/Slotted <b>OB2DI-SR</b> - Silver

BALLAST CONFIGURATION & CODE			
32W/T8	28W/T5	54W/T5HO	DESCRIPTION
(Blank)	-	-	Electronic Instant Start
EPS	(Blank)	(Blank)	Electronic Program Start
ADV-7	-	ADV-7	Advance Mark-7 <sup>1</sup>
ADV-10	-	ADV-10	Advance Mark-10 <sup>1</sup>
-	ADV-OPT	-	Advance Optanium <sup>1</sup>
ADV-ESS	-	-	Advance Essential <sup>1</sup>
ADV-ROVR	-	ADV-ROVR	Advance Rover <sup>1</sup>
LUT-EHD	LUT-EHD	LUT-EHD	Lutron Ecosystem H-Series <sup>1</sup>
LUT-2W	-	-	Lutron Tu-Wire <sup>1</sup>
LUT-EC5	LUT-EC5	-	Lutron Ecosystem <sup>1</sup>
LUT-EC3	LUT-EC3	LUT-EC3	Lutron Eco-10 <sup>1</sup>
LUT-TVE	-	-	Lutron Tve <sup>1</sup>
LUT-H3D	LUT-H3D	LUT-H3D	Lutron Hi-Lume 3D <sup>1</sup>
-	-	LUT-ECD	Lutron Ecosystem (317V Only) <sup>1</sup>

<sup>1</sup>- Voltage must be specified for dimming ballast.

#### EMERGENCY BATTERY PACK OPTIONS (L. = LUMENS)

ORDER CODE	DESCRIPTION
<b>EMG-T8-BX-450</b>	Up to 450 L. for <b>T8</b> or <b>BX</b>
<b>EMG-T8-BX-600</b>	Up to 600 L. for <b>T8</b> or <b>BX</b>
<b>EMG-T8-BX-700</b>	Up to 700 L. for <b>T8</b> or <b>BX</b>
<b>EMG-T8-BX-1400</b>	Up to 1400 L. for <b>T8</b> or <b>BX</b>
<b>EMG-T5-T5HO-700</b>	Up to 700 L. for <b>T5</b> or <b>T5HO</b>
<b>EMG-T5-T5HO-1300</b>	Up to 1300 L. for <b>T5</b> or <b>T5HO</b>
<b>EMG-SD-T8-BX-T5-T5HO-1400</b>	Self-Diagnostic 1400 L. for <b>T8</b> , <b>BX</b> , <b>T5</b> or <b>T5HO</b>
<b>EMG-ICE-T8-BX-T5-T5HO-1400</b>	ICE Pack 1400 L. for <b>T8</b> , <b>BX</b> , <b>T5</b> or <b>T5HO</b>
<b>GTD</b>	Generator Transfer Device

#### WIRING OPTIONS

<b>C3</b>	- 6' 3-wire Flex Cable (Single Circuit)
<b>C4</b>	- 6' 4-wire Flex Cable (Double Circuit)
<b>FBF</b>	- Internal Fast Blow Fuse
<b>SBF</b>	- Internal Slow-Blow Fuse
<b>RIS</b>	- Radio Interference Suppressor

#### OTHER OPTIONS

<b>INMS</b>	- Motion Sensor
<b>OCGSS</b>	- Cable Gripper Suspension Kit
<b>USA</b>	- Made in America Compliance

4' Fluorescent Direct/Indirect Luminaire

## T8/T5 FLUORESCENT DIRECT/INDIRECT LUMINAIRE (SURFACE OR SUSPENDED MOUNT)



Perforated metal basket and white overlay produces a "Soft-Glow" lighting effect.

- Integral reflector design provides an efficient direct/indirect fixture design
- Perforated basket hinge swings open for easy lamp replacement
- Fixture design is ideally suited for low ceiling installations
- Optional suspension systems are also available

### AVAILABLE SHIELDING OPTIONS

Perforated Metal Bracket




**OB2DI**

Clear Linear Acrylic Lens



**OB3DI**

### SPECIFICATION GUIDE:

DESCRIPTION	PART#	DIMENSIONS
<b>White Slotted Reflector</b>	<b>OB2DI-WSU</b> 	<b>W=10-3/8, H=5-3/4, L=48</b>
<b>Silver Reflector</b>	<b>OB2DI-SR</b> 	<b>W=10-3/8, H=5-3/4, L=48</b>

#### LISTING:

- Fixture and ballast UL Listed
- Electronic ballast thermally protected Class P, NPF, Non PCB

T8/T5  
OB3DI

4' Fluorescent Direct/Indirect Luminaire