

### Lumi-PRO Extrusion/DIRECTIONAL LIGHT-SUSPENDED

The **Lumi-PRO** Directional Light LED Suspended Extrusion is the ideal solution for transforming spaces with focused light that enhances the architectural design of both objects and areas. Additionally, this LED profile can be installed as a recessed mount thanks to its included mounting spring clip.

Equipped with an integrated diffuser lens, the profile ensures uniform light diffusion, providing both accent and general illumination. This versatility makes it suitable for a wide range of applications, from decorative lighting to functional ambient lighting.

Designed specifically for compatibility with our LB Series LED Strip Lights, these extrusions offer highly customizable and adaptable lighting solutions for suspended architectural features. Perfect for residential, commercial, and hospitality environments.

### Example: LP-SHC-DL-SPD-1-8-SI-FTD

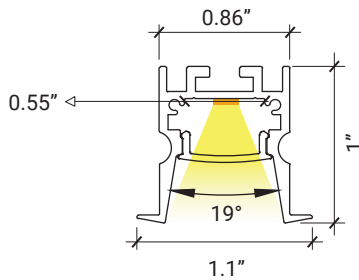
SERIES	EXT. LENGTH	FINISH	OPTICAL LENS
LP-SHC-DL-SPD-1	2 - 2ft 4 - 4ft 8 - 8ft C - Custom	SI - Silver BK - Black WH - White	FTD - Flat Diffuser FTO - Flat Opal <sup>1</sup> FTT - Flat Transparent <sup>1</sup> FTB - Flat Black <sup>1</sup>

**1.MOQ (minimum order quantity)**  
required for these options, please consult factory.

### Compatible LB Series-24V LED Strip Light

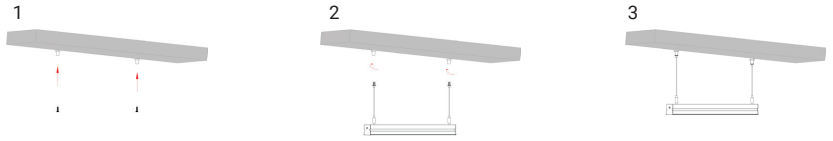
<b>LB1000-MN</b>		Power 2.9W/ft - Voltage 24V - CRI 90+ - LED Qty 37/ft - Lumens 280lm/ft
<b>LB1000-LR</b>		Power 3.1W/ft - Voltage 24V - CRI 90+ - LED Qty 37/ft - Lumens 295lm/ft
<b>LB1000-ST</b>		Power 7.2W/ft - Voltage 24V - CRI 95+ - LED Qty 72/ft - Lumens 875lm/ft
<b>LB1000-ST-HO</b>		Power 11W/ft - Voltage 24V - CRI 95+ - LED Qty 72/ft - Lumens 1400lm/ft
<b>LB1000V-ST</b>		Power 6.6W/ft - Voltage 24V - CRI98+ - LED Qty 73/ft - Lumens 890lm/ft
<b>LB1003-ST</b>		Power 3W/ft - Voltage 24V - CRI90+ - LED Qty 55/ft - Lumens 500lm/ft
<b>LB1000-ST-SC</b>		Power 7W/ft - Voltage 24V - CRI90+ - LED Qty 61/ft - Lumens 1082lm/ft
<b>LB1004-ST</b>		Power 5.9W/ft - Voltage 24V - CRI90+ - LED Qty 128/ft - Lumens 380lm/ft
<b>LB3000-ST</b>		Power 3W/ft - Voltage 24V - CRI 90+ - LED Qty 146/ft - Lumens 325lm/ft
<b>LB3000-ST-HE</b>		Power 5.8W/ft - Voltage 24V - CRI 90+ - LED Qty 88/ft - Lumens 940lm/ft
<b>LB3000-FC-ST</b>		Power 4.6W/ft - Voltage 24V - CRI 90+ - LED Qty 98/ft - Lumens 550lm/ft
<b>LB3000-TWH</b>		Power 6.1W/ft - Voltage 24V - CRI 90+ - LED Qty 195/ft - Lumens 520lm/ft
<b>LB4000-RGB</b>		Power 6.1W/ft - Voltage 24V - LED Qty 51/ft - Lumens 250lm/ft
<b>LB3000-RGBW</b>		Power 6.1W/ft - Voltage 24V - LED Qty 256/ft - Lumens 232lm/ft
<b>LB4000-RGBTWH</b>		Power 3.7W/ft - Voltage 24V - LED Qty 18/ft - Lumens 220lm/ft
<b>LB4000-RGBW</b>		Power 5.9W/ft - Voltage 24V - LED Qty 18/ft - Lumens 250lm/ft

## DIMENSIONS

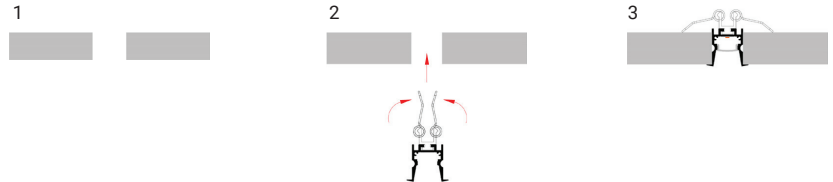


## MOUNTING

Profile with pendant cable mounting



Profile with spring clip mounting

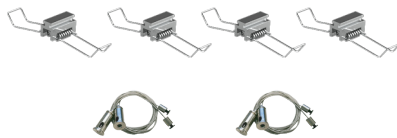


## OPTICAL LENS



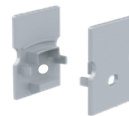
FTD - Flat Diffuser **INCLUDED**

## ACCESSORIES



4 Mounting Clips **INCLUDED**  
2 Suspended Cables (3 ft each) **INCLUDED**

## END CAPS



2 End Caps With Holes **INCLUDED**



2 End Caps Without Holes **INCLUDED**

It Can be ordered in 3 different ways.

### 1. Everything will be shipped separately

**RL**

• Channel, cover, accessories and tape light will be cut and shipped to your desired length.



Channel, Cover, mounting clips, and end caps.



Tape Light if ordered.

Accessories if ordered.



### 2. Pre-assembled and shipped separately as two units

**PA**

- Channel, cover, accessories and tape light will be cut and shipped to your desired length.
- Cover, end caps and clips will be assembled to the channel.
- Wiring accessories will be attached to the tape light.



Channel will be cut and assembled to your desired length.



Wiring accessories attached to the tape light.

### 3. Fully assembled and shipped as a single unit

**FA**

- Channel, cover, accessories and tape light will be cut and shipped to your desired length.
- Wiring accessories will be attached to the tape light.
- Tape light will be installed into the channel and ready to use.



Refer to the next page for **COMPATIBLE** Tape Lights.

## COMPATIBLE TAPE LIGHT Ordering Guide

Power feed, jumpers and connectors compatible with this channel

	LB1000-MN	LB1000-LR	LB1000-ST	LB1000-ST-HO	LB1000V-ST	LB1003-ST	LB1000-ST-SC	LB1004-ST
Soldered Lead (SL)	✓	✓	✓	✓	✓	✓	✓	✓
Soldered Jumper (JPSL)	✓	✓	✓	✓	✓	✓	✓	✓
Power Connector (TW)	X	X	X	X	X	X	X	X
Tape Connector (TT)	X	X	X	X	X	X	X	X
Tape Jumper (JP)	X	X	X	X	X	X	X	X
Closed End (CE)	✓	✓	✓	✓	✓	✓	✓	✓
DC Connector Male-(DCM)	✓	✓	✓	✓	✓	✓	✓	✓
DC Connector Female-(DCF)	✓	✓	✓	✓	✓	✓	✓	✓

Power feed, jumpers and connectors compatible with this channel

	LB3000-ST	LB3000-ST-HE	LB3000-FC-ST	LB3000-TWH	LB4000-RGB	LB3000-RGBW	LB4000-RGBTWH	LB4000-RGBW
Soldered Lead (SL)	✓	✓	✓	✓	✓	✓	✓	✓
Soldered Jumper (JPSL)	✓	✓	✓	✓	✓	✓	✓	✓
Power Connector (TW)	✓	✓	✓	✓	X	✓	X	X
Tape Connector (TT)	✓	✓	✓	✓	X	✓	X	X
Tape Jumper (JP)	✓	✓	✓	✓	X	✓	X	X
Closed End (CE)	✓	✓	✓	✓	✓	✓	✓	✓
DC Connector Male-(DCM)	✓	✓	✓	✓	✓	✓	✓	✓
DC Connector Female-(DCF)	✓	✓	✓	✓	✓	✓	✓	✓

SL= Soldered Lead JPSL= Soldered Jumper DCM=DC Connector Male soldered DCF=DC Connector Female soldered

TW=Tape to Wire Power Feed TT=Tape to Tape Connector JP=Jumper Wire for Connectors CE=Closed end no connector

X

Not compatible with this channel.

**NOTE:** The endcap hole should be enlarged to allow wiring to pass through, or the channel may be used without endcaps.

## COMPATIBLE TAPE LIGHT Ordering Guide

Power feed, jumpers and connectors compatible with this channel

	LB1000-WL-ST	LB3000-RGBW Wet-Location	LB1000-WDM					
Soldered Lead (SL)	✓	✓	✓					
Soldered Jumper (JPSL)	✓	✓	✓					
Power Connector (TW)	X	X	X					
Tape Connector (TT)	X	X	X					
Tape Jumper (JP)	X	X	X					
Closed End (CE)	✓	✓	✓					
DC Connector Male-(DCM)	✓	✓	✓					
DC Connector Female-(DCF)	✓	✓	✓					

**SL**= Soldered Lead **JPSL**= Soldered Jumper **DCM**=DC Connector Male soldered **DCF**=DC Connector Female soldered  
**TW**=Tape to Wire Power Feed **TT**=Tape to Tape Connector **JP**=Jumper Wire for Connectors **CE**=Closed end no connector

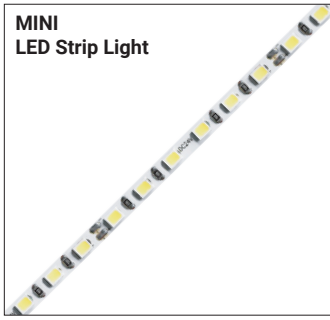


Not compatible with this channel.

**NOTE:** The endcap hole should be enlarged to allow wiring to pass through, or the channel may be used without endcaps.



## MINI LED Strip Light



Series-LB1000-MN | 280lm/ft - 2.9W/ft  
Indoor Strip Light  
Width / 0.16"/4mm  
37 LEDs/FT

SERIES	WATTAGE	LENGTH	CCT	VOLTAGE	WIRING ACCESSORIES
LB1000-MN	2.9W - 2.9W/ft	16F - 16ft Roll C - Custom	27K - 2700K 30K - 3000K 35K - 3500K 40K - 4000K 50K - 5000K	24V - 24V	DCM - Wire to Wire Male Connector DCF - Wire to Wire Female Connector SL-2 - Soldered Lead JPSL-2 - Soldered Jumper
SHIPPING OPTIONS					
RL - Rolls 16ft PA - Pre-Assembled FA - Fully Assembled					

## Static LED Strip Light



Series-LB1000-LR | 295lm/ft - 3.1W/ft  
Indoor Strip Light  
Width / 0.39"/10mm  
37 LEDs/FT

SERIES	WATTAGE	LENGTH	CCT	VOLTAGE	WIRING ACCESSORIES
LB1000-LR	3.1W - 3.1W/ft	52F - 52ft Roll C - Custom	30K - 3000K 40K - 4000K 50K - 5000K	24V - 24V	TT10-2 - Tape to Tape Connector TW10-2 - Tape to Wire Connector JP10-2 - Tape to Tape Jumper DCM - DC Male Connector DCF - DC Female Connector SL-2 - Soldered Lead JPSL-2 - Soldered Jumper
SHIPPING OPTIONS					
RL - Rolls 52ft PA - Pre-Assembled FA - Fully Assembled					

## Tight-Pitch LED Strip Light



Series-LB1000-ST | 235lm/ft - 1.9W/ft  
Indoor Strip Light  
Width / 0.39"/10mm  
72 LEDs/FT

SERIES	WATTAGE	LENGTH	CCT	VOLTAGE	WIRING ACCESSORIES
LB1000-ST	1.9W - 1.9W/ft 4.6W - 4.6W/ft 7.2W - 7.2W/ft	16F - 16ft Roll C - Custom	27K - 2700K 30K - 3000K 35K - 3500K 40K - 4000K 50K - 5000K 60K - 6000K	24V - 24V	TT10-2T - Tape to Tape Connector TW10-2T - Power Connector JP10-2T - Tape to Tape Jumper DCM - Wire to Wire Male Connector DCF - Wire to Wire Female Connector SL-2 - Soldered Lead JPSL-2 - Soldered Jumper
SHIPPING OPTIONS					
RL - Rolls 16ft PA - Pre-Assembled FA - Fully Assembled					

## High-Output LED Strip Light



Series-LB1000-ST-HO | 1120lm/ft - 9W/ft  
Indoor Strip Light  
Width / 0.39"/10mm  
72 LEDs/FT

SERIES	WATTAGE	LENGTH	CCT	VOLTAGE	WIRING ACCESSORIES
LB1000-ST-HO	9W - 9W/ft 11W - 11W/ft	16F - 16ft Roll C - Custom	27K - 2700K 30K - 3000K 35K - 3500K 40K - 4000K 50K - 5000K 60K - 6000K	24V - 24V	TT10-2T - Tape to Tape Connector TW10-2T - Power Connector JP10-2T - Tape to Tape Jumper DCM - Wire to Wire Male Connector DCF - Wire to Wire Female Connector SL-2 - Soldered Lead JPSL-2 - Soldered Jumper
SHIPPING OPTIONS					
RL - Rolls 16ft PA - Pre-Assembled FA - Fully Assembled					



# LP-SHC-DL-SPD-1

**Lumi-PRO** Extrusion/DIRECTIONAL LIGHT-SUSPENDED

Refer to the tape light spec sheet for detailed information.

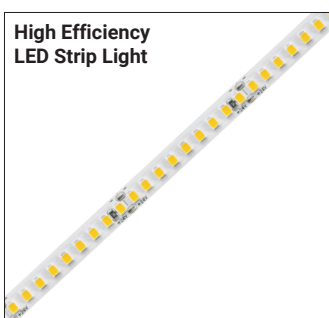


**Series-LB1000V-ST** | 890lm/ft-6.6W/ft  
Indoor Strip Light  
Width / 0.39" / 10mm  
73 LEDs/FT

SERIES	WATTAGE	LENGTH	CCT	VOLTAGE	WIRING ACCESSORIES
LB1000V-ST	6.6W - 6.6W/ft	16F - 16ft Roll C - Custom	27K - 2700K 30K - 3000K 35K - 3500K 40K - 4000K 50K - 5000K	24V - 24V	TW10-2T - Tape to Wire Connector JP10-2T - Tape to Tape Jumper DCM - DC Male Connector DCF - DC Female Connector SL-2 - Soldered Lead JPSL-2 - Soldered Jumper

## SHIPPING OPTIONS

RL - Rolls 16ft  
PA - Pre-Assembled  
FA - Fully Assembled

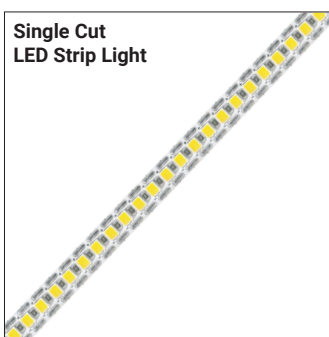


**Series-LB1003-ST** | 500lm/ft - 3W/ft  
Indoor Strip Light  
Width / 0.3" / 8mm  
55 LEDs/FT

SERIES	WATTAGE	LENGTH	CCT	VOLTAGE	WIRING ACCESSORIES
LB1003-ST	3W - 2.9W/ft	16F - 16ft Roll C - Custom	27K - 2700K 30K - 3000K 35K - 3500K 40K - 4000K 50K - 5000K 65K - 6500K	24V - 24V	TW8-2 - Power Connector JP8-2 - Tape to Tape Jumper DCM - Wire to Wire Male Connector DCF - Wire to Wire Female Connector SL-2 - Soldered Lead JPSL-2 - Soldered Jumper

## SHIPPING OPTIONS

RL - Rolls 16ft  
PA - Pre-Assembled  
FA - Fully Assembled



**Series-LB1000-ST-SC** | 1082lm/ft-7W/ft  
Indoor Strip Light  
Width / 0.3" / 8mm  
61 LEDs/FT

SERIES	WATTAGE	LENGTH	CCT	VOLTAGE	WIRING ACCESSORIES
LB1000-ST-SC	7W - 7.3W/ft	13F - 13ft Roll C - Custom	27K - 2700K 30K - 3000K 35K - 3500K 40K - 4000K 50K - 5000K 65K - 6500K	24V - 24V	TW8-2 - Tape to Wire Connector JP8-2 - Tape to Tape Jumper DCM - DC Male Connector DCF - DC Female Connector SL-2 - Soldered Lead JPSL-2 - Soldered Jumper

## SHIPPING OPTIONS

RL - Rolls 16ft  
PA - Pre-Assembled  
FA - Fully Assembled



**Series-LB1004-ST** | 380lm/ft - 6W/ft  
Indoor Strip Light  
Width / 0.39" / 10mm  
128 LEDs/FT

SERIES	WATTAGE	LENGTH	CCT	VOLTAGE	WIRING ACCESSORIES
LB1004-ST	6W - 5.9W/ft	16F - 16ft Roll C - Custom	22K - 2200K 25K - 2500K 27K - 2700K 30K - 3000K 35K - 3500K 40K - 4000K 50K - 5000K 60K - 6000K	24V - 24V	TW10-2MN - Power Connector JP10-2MN - Tape to Tape Jumper DCM - Wire to Wire Male Connector DCF - Wire to Wire Female Connector SL-2 - Soldered Lead JPSL-2 - Soldered Jumper

## SHIPPING OPTIONS

RL - Rolls 16ft  
PA - Pre-Assembled  
FA - Fully Assembled





Series-LB3000-ST	325lm/ft - 3W/ft
Indoor Strip Light	
Width / 0.3"/8mm	
146 LEDs/FT	

LB3000-ST					
<b>SERIES</b>	<b>WATTAGE</b>	<b>LENGTH</b>	<b>CCT</b>	<b>VOLTAGE</b>	<b>WIRING ACCESSORIES</b>
LB3000-ST	3W - 3W/ft	16F - 16ft Roll C - Custom	27K - 2700K 30K - 3000K 35K - 3500K 40K - 4000K 50K - 5000K 60K - 6000K	24V - 24V	<b>TT8-2C</b> - Tape to Tape Connector <b>TW8-2C</b> - Power Connector <b>JP8-2C</b> - Tape to Tape Jumper <b>DCM</b> - Wire to Wire Male Connector <b>DCF</b> - Wire to Wire Female Connector <b>SL-2</b> - Soldered Lead <b>JPSL-2</b> - Soldered Jumper
<b>SHIPPING OPTIONS</b>					
<b>RL</b> - Rolls 16ft <b>PA</b> - Pre-Assembled <b>FA</b> - Fully Assembled					



**Series-LB3000-ST-HE** | 940lm/ft-5.8W/ft  
**Indoor Strip Light**  
 Width / 0.39" / 10mm  
 88 LEDs/FT

LB3000-ST-HE					
<b>SERIES</b>	<b>WATTAGE</b>	<b>LENGTH</b>	<b>CCT</b>	<b>VOLTAGE</b>	<b>WIRING ACCESSORIES</b>
LB3000-ST-HE	5.8W - 5.8W/ft	16F - 16ft Roll C - Custom	27K - 2700K 30K - 3000K 35K - 3500K 40K - 4000K 50K - 5000K	24V - 24V	<b>TT10-2BC</b> - Tape to Tape Connector <b>TW10-2BC</b> - Tape to Wire Connector <b>JP10-2BC</b> - Tape to Tape Jumper <b>DCM</b> - DC Male Connector <b>DCF</b> - DC Female Connector <b>SL-2</b> - Soldered Lead <b>JPSL-2</b> - Soldered Jumper
<b>SHIPPING OPTIONS</b>					
<b>RL</b> - Rolls 16ft <b>PA</b> - Pre-Assembled <b>FA</b> - Fully Assembled					



**Series-LB3000-FC-ST** | **550lm/ft-4.6W/ft**  
**Indoor Strip Light**  
**Width / 0.39" / 10mm**  
**98 LEDs/FT**

LB3000-FC-ST					
<b>SERIES</b>	<b>WATTAGE</b>	<b>LENGTH</b>	<b>CCT</b>	<b>VOLTAGE</b>	<b>WIRING ACCESSORIES</b>
LB3000-FC-ST	4.6W - 4.6W/ft	16F - 16ft Roll C - Custom	27K - 2700K 30K - 3000K 35K - 3500K 40K - 4000K 50K - 5000K	24V - 24V	TT10-2BC - Tape to Tape Connector TW10-2BC - Tape to Wire Connector JP10-2BC - Tape to Tape Jumper DCM - DC Male Connector DCF - DC Female Connector SL-2 - Soldered Lead JPSL-2 - Soldered Jumper
<b>SHIPPING OPTIONS</b>					
RL - Rolls 16ft PA - Pre-Assembled FA - Fully Assembled					



**Series-LB3000-TWH** | **520lm/ft - 6.1W/ft**  
**Indoor Strip Light**  
**Width / 0.39"/10mm**  
**195 LEDs/FT**

LB3000					
<b>SERIES</b>	<b>WATTAGE</b>	<b>LENGTH</b>	<b>TECHNOLOGY</b>	<b>VOLTAGE</b>	<b>WIRING ACCESSORIES</b>
<b>LB3000</b>	<b>6.1W</b> - 6.1W/ft	<b>16F</b> - 16ft Roll <b>C</b> - Custom	<b>TWH-65K-27K</b> - TWH/6500K-2700K	<b>24V</b> - 24V	<b>TW10-3C</b> - Power Connector <b>JP10-3C</b> - Tape to Tape Jumper <b>SL-3</b> - Soldered Lead <b>JPSL-3</b> - Soldered Jumper
<div></div> <div><b>SHIPPING OPTIONS</b></div> <div> <b>RL</b> - Rolls 16ft  <b>PA</b> - Pre-Assembled  <b>FA</b> - Fully Assembled         </div>					



**Series-LB4000-RGB** | 250lm/ft - 6.1W/ft  
Indoor Strip Light  
Width / 0.39" / 10mm  
51 LEDs/FT

LB4000					
SERIES	WATTAGE	LENGTH	COLOR	VOLTAGE	WIRING ACCESSORIES
LB4000	6.1W - 6.1W/ft	16F - 16ft Roll C - Custom	RGB - RGB	24V - 24V	<b>TT10-4</b> - Tape to Tape Connector <b>TW10-4</b> - Power Connector <b>JP10-4</b> - Tape to Tape Jumper <b>SL-4</b> - Soldered Lead <b>JPSL-4</b> - Soldered Jumper
<div> <div></div> <div>SHIPPING OPTIONS</div> </div>					
RL - Rolls 16ft PA - Pre-Assembled FA - Fully Assembled					



**Series-LB3000-RGBW** | 255lm/ft - 6.1W/ft  
Indoor Strip Light  
Width / 0.47"/12mm  
256 LEDs/FT

LB3000					
SERIES	WATTAGE	LENGTH	COLOR	VOLTAGE	WIRING ACCESSORIES
LB3000	6.1W - 6.1W/ft	16F - 16ft Roll C - Custom	RGBW - RGBW	24V - 24V	<b>TW12-5C</b> - Power Connector <b>JP12-5C</b> - Tape to Tape Jumper <b>SL-5</b> - Soldered Lead <b>JPSL-5</b> - Soldered Jumper
<div> <div></div> <div>SHIPPING OPTIONS</div> </div>					
RL - Rolls 16ft PA - Pre-Assembled FA - Fully Assembled					



**Series-LB4000-RGBTWH** | 220lm/ft - 3.7W/ft  
Indoor Strip Light  
Width / 0.47"/12mm  
18 LEDs/FT

LB4000					
SERIES	WATTAGE	LENGTH	COLOR	VOLTAGE	WIRING ACCESSORIES
LB4000	3.7W - 3.7W/ft	16F - 16ft Roll C - Custom	RGB/TWH- RGB/TWH	24V - 24V	<b>TW12-6</b> - Power Connector <b>JP12-6</b> - Tape to Tape Jumper <b>SL-6</b> - Soldered Lead <b>JPSL-6</b> - Soldered Jumper
<div> <div></div> <div>SHIPPING OPTIONS</div> </div>					
RL - Rolls 16ft PA - Pre-Assembled FA - Fully Assembled					



**Series-LB4000-RGBW** | 250lm/ft - 5.9W/ft  
Indoor Strip Light  
Width / 0.47"/12mm  
18 LEDs/FT

LB4000					
SERIES	WATTAGE	LENGTH	COLOR	VOLTAGE	WIRING ACCESSORIES
LB4000	5.9W - 5.9W/ft	16F - 16ft Roll C - Custom	RGBW - RGBW	24V - 24V	<b>TW12-5</b> - Power Connector <b>JP12-5</b> - Tape to Tape Jumper <b>SL-5</b> - Soldered Lead <b>JPSL-5</b> - Soldered Jumper
<div> <div></div> <div>SHIPPING OPTIONS</div> </div>					
RL - Rolls 16ft PA - Pre-Assembled FA - Fully Assembled					





# LP-SHC-DL-SPD-1

**Lumi-PRO** Extrusion/DIRECTIONAL LIGHT-SUSPENDED

Refer to the tape light spec sheet for detailed information.



**Series-LB1000-WL-ST**  
**Outdoor Strip Light**  
Width / 0.53" / 13mm  
72 LEDs/FT

215lm/ft - 1.9W/ft  
565lm/ft - 4.6W/ft

LB1000-WL-ST					
SERIES	WATTAGE	LENGTH	CCT	VOLTAGE	WIRING ACCESSORIES
LB1000-WL-ST	1.9W - 1.9W/ft 4.6W - 4.6W/ft	16F - 16ft Roll C - Custom	30K - 3000K 40K - 4000K 50K - 5000K	24V - 24V	WL-BCF-2P-WHT - Female Connector WL-BCM-2P-WHT - Male Connector



## SHIPPING OPTIONS

RL - Rolls 16ft  
PA - Pre-Assembled  
FA - Fully Assembled



**Series-LB3000-RGBW**  
**Outdoor Tape Light**  
Width / 0.55" / 14mm  
256 LEDs/FT

218lm/ft - 6.1W/ft

LB3000						
SERIES	WATTAGE	LENGTH	TECHNOLOGY	VOLTAGE	RATED	WIRING ACCESSORIES
LB3000	6.1W - 6.1W/ft	16F - 16 Ft Roll C - Custom	RGBW	24V - 24V	WL	WL-BCF-5P-WH - Female Connector 12" WL-BCM-5P-WH - Male Connector 72" LB3000-RGBW-WL-EC-PF - End Cap/Power feed LB3000-RGBW-WL-EC - End Cap



## SHIPPING OPTIONS

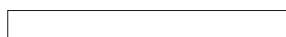
RL - Rolls 16ft  
PA - Pre-Assembled  
FA - Fully Assembled



**Series-LB1000-WDM**  
**Indoor Tape Light**  
Width / 0.47" / 12mm  
51 LEDs/FT

515lm/ft - 4.4W/ft

LB1000					
SERIES	WATTAGE	LENGTH	TECHNOLOGY	VOLTAGE	WIRING ACCESSORIES
LB1000	4.4W - 4.4W/ft	16F - 16ft Roll C - Custom	WDM-30K-18K - WDM/30K-18K	24V - 24V	TT12-2 - Tape to Tape Connector TW12-2 - Power Connector JP12-2 - Tape to Tape Jumper DCM - Male Connector DCF - Female Connector SL-2 - Soldered Lead JPSL-2 - Soldered Jumper



## SHIPPING OPTIONS

RL - Rolls 16ft  
PA - Pre-Assembled  
FA - Fully Assembled