

**Lumi-PRO Extrusion SURFACE**

Lumi-Pro Extrusion Surface LED profiles are widely embraced in interior design applications, offering a practical and visually appealing lighting solution. Perfect for creating a seamless and sophisticated lighting effect within walls, ceilings, or furniture, these extrusions bring a touch of elegance to any space.

The installation of Lumi-Pro Surface LED Extrusions is a straightforward process that demands minimal effort. Easily integrated into the desired area using screws or clips, these extrusions eliminate the need for complex installation procedures.

Designed specifically for use with our LB series LED Light Strips, these extrusions provide a versatile and customizable lighting solution for distinct spaces within residential, commercial, or hospitality settings.

Example: LP-SHC-CM-025-8-SI-FTD

SERIES	EXT. LENGTH	FINISH	OPTICAL LENS
LP-SHC-CM-025	2 - 2ft 4 - 4ft 8 - 8ft C - Custom	SI - Silver BK - Black <sup>1</sup> WH - White <sup>1</sup>	FTD - Flat Diffuser FTO - Flat Opal <sup>1</sup> FTT - Flat Transparent <sup>1</sup> FTB - Flat Black <sup>1</sup>

<sup>1</sup>.MOQ (minimum order quantity) required for these options, please consult factory.

**Series LP-SHC-CM-025**  
Tape light width 0.16" recommended.  
Extrusion Length: 2ft / 4ft / 8ft  
Finish: Silver, Black, White.  
Mounting: Surface clip/**INCLUDED**.  
End caps: With hole / Without hole/**INCLUDED**.  
Application: Architectural, Residential, Commercial.

Experience unrivaled performance with our precision-engineered, high density tape light, designed to meet the demands of even the most challenging applications.

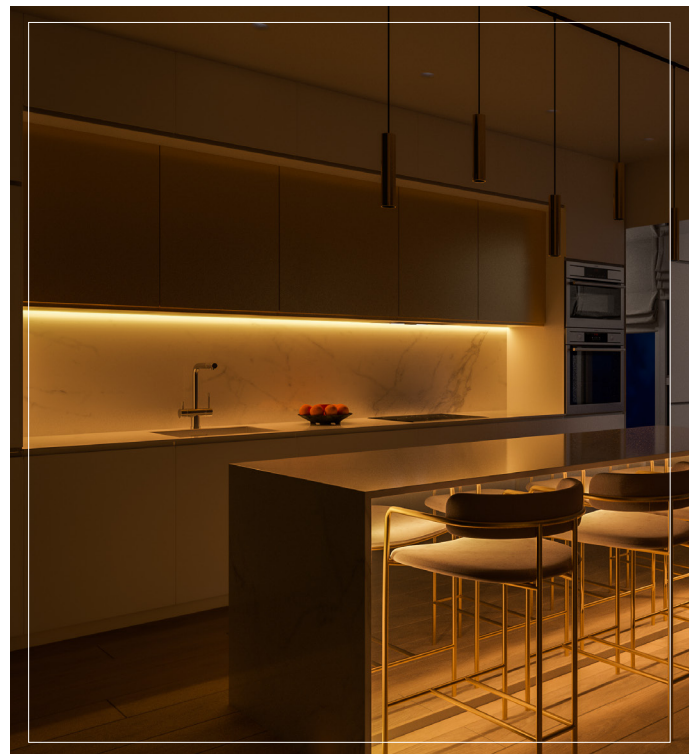
**LB Series 24V LED Light Strips**

COMPATIBLE TAPE LIGHT

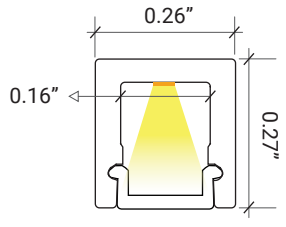
LB1000-MN



Power 2.9W/ft - Voltage 24V - CRI 90+ - LED Qty 37/ft - Lumens 280lm/ft



**DIMENSIONS**



**MOUNTING**



Profile with surface mounting clip

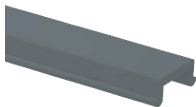


Surface Clip **INCLUDED**

**OPTICAL LENSES**



FTD/Flat Diffuser



FTB/Flat Black

**END CAPS INCLUDED**



WH/With Hole



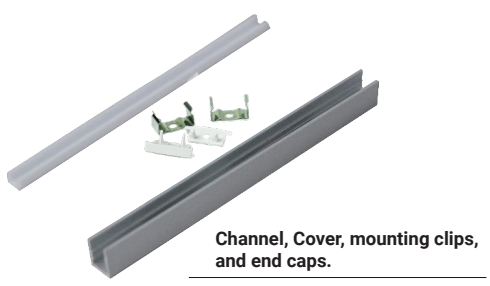
WTH/Without Hole

Surface clip and end caps included.

It Can be ordered in 3 different ways.

**1. Everything will be shipped separately**      **2. Pre-assembled and shipped separately as two units**      **3. Fully assembled and shipped as a single unit**

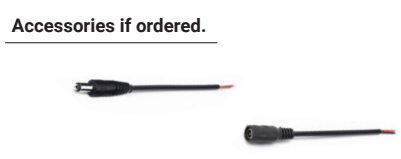
- Channel, cover, accessories and tape light will be cut and shipped to your desired length.



Channel, Cover, mounting clips, and end caps.



Tape Light if ordered.



Accessories if ordered.

- Channel, cover, accessories and tape light will be cut and shipped to your desired length.
- Cover, end caps and clips will be assembled to the channel.
- Wiring accessories will be attached to the tape light.



Channel will be cut and assembled to your desired length.



Wiring accessories attached to the tape light.

- Channel, cover, accessories and tape light will be cut and shipped to your desired length.
- Wiring accessories will be attached to the tape light.
- Tape light will be installed into the channel and ready to use.



Refer to the next page for COMPATIBLE Tape Lights.

COMPATIBLE STRIP LIGHT

# Ordering Guide

	LB1000- MN	LB1000- LR	LB1000- ST	LB1000- WL-ST	LB1000- WDM	LB1004- ST	LB1003- ST	LB3000- ST	LB3000- TWH	LB3000- RGBW	LB4000- RGBTW H	LB4000- RGBW	LB4000- RGB	LB9000- RGBW
	MINI LED Static White	Static White	Static White	Outdoor Static White	Warm Dim LED	Mini Neon	High efficiency	COB White	COVE Linear Tunable White	COB Linear RGBW	RGB Tunable White	RGB White	RGB	RGB- DMX
CCT	2.7K	3K	27K	3K	18/3K	22K	27K	27K	2.7/6.5K	3K	27/65	3K	RGB	RGBW
	3k	4K	3K	4K	2.7/6.5K	27K	3K	3K						3K
	35K	5K	3.5K	5K		3K	35K	35K						
	4K		4K			4K	4K	4K						
	5K		5K			5K	5K	5K						
W/LF	2.9	3.1	1.9	1.9	4.4	5.9	2.9	3	6.1	6.1	3.7	5.9	6.1	6
			4.6	4.6										
			7.2											
			9											
			11											

**ST-1000 7.2, 9.0 and 11 W/LF for use with connector compatible channel only.**

## Power feed, jumpers and tape connectors compatible with this channel

Specify (1) Option for each end of LED Strip

Soldered Lead	SL-2	X	X	X	X	X	X	X	X	X	X	X	X	X
Soldered Jumper	JPSL-2	X	X	X	X	X	X	X	X	X	X	X	X	X
Power Connector		X	X	X	X	X	X	X	X	X	X	X	X	X
Tape Connector		X	X	X	X	X	X	X	X	X	X	X	X	X
Tape Jumper		X	X	X	X	X	X	X	X	X	X	X	X	X
Closed End	CE	X	X	X	X	X	X	X	X	X	X	X	X	X
DC Connector Male-soldered	DCM	X	X	X	X	X	X	X	X	X	X	X	X	X
DC Connector Female-soldered	DCF	X	X	X	X	X	X	X	X	X	X	X	X	X

**SL= Soldered Lead JPSL= Soldered Jumper DCM=DC Connector Male soldered DCF=DC Connector Female soldered**

**TW= Tape to Wire Power Feed TT= Tape to Tape Connector JP= Jumper Wire for Connectors CE= Closed end no connector**

Not available with  
this channel



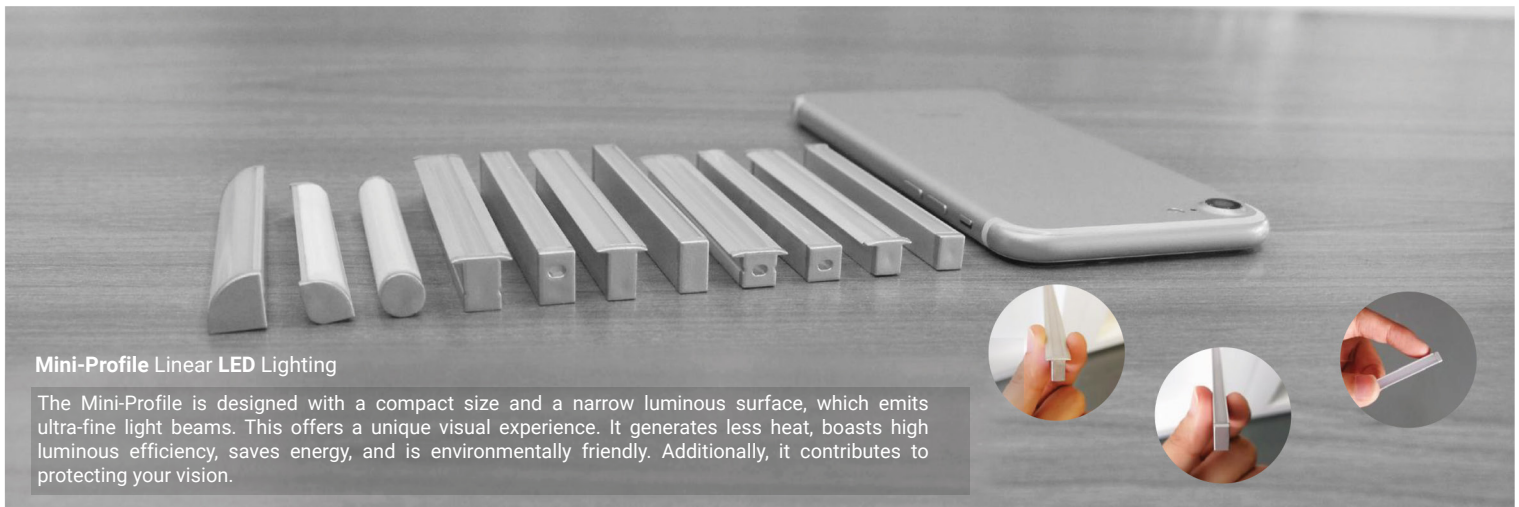


COMPATIBLE STRIP LIGHT



**MINI LED Strip Light**  
Series-LB1000-MN | 280lm/ft - 2.9W/ft  
Indoor Strip Light  
Width / 0.16"/4mm  
37 LEDs/FT

LB1000-MN					
SERIES	WATTAGE	LENGTH	CCT	VOLTAGE	WIRING ACCESSORIES
LB1000-MN	2.9W - 2.9W/ft	16F - 16ft Roll	27K - 2700K 30K - 3000K 35K - 3500K 40K - 4000K 50K - 5000K	24V - 24V	DCM - Wire to Wire Male Connector DCF - Wire to Wire Female Connector SL-2 - Soldered Lead JPSL-2 - Soldered Jumper
CHANNEL	STRIP LIGHT	WIRING ACCESSORIES			
ASB - Assembled SEP - Separated	INS - Installed SEP - Separated	INS - Installed SEP - Separated			



**Mini-Profile Linear LED Lighting**

The Mini-Profile is designed with a compact size and a narrow luminous surface, which emits ultra-fine light beams. This offers a unique visual experience. It generates less heat, boasts high luminous efficiency, saves energy, and is environmentally friendly. Additionally, it contributes to protecting your vision.