

Lumi-Pro Specialty Extrusions

The Lumi-PRO Step LED Profile is an ideal solution for creating safe, visually striking step lighting. Designed specifically for steps and staircases, it delivers a smooth, even wash of light that enhances visibility and safety, especially in low-light environments.

The profile features a PVC anti-slip top cover, improving traction in wet or moist conditions and adding an extra layer of safety. Installation is simple and secure by screwing the profile directly into the stair surface, ensuring a stable and reliable fit.

The extrusion's design allows for precise downward and upward illumination, highlighting each step with clean, uniform, and complete light distribution.

Compatible with our LB Series LED Strip Lights, these extrusions provide customizable, tailored lighting solutions suitable for both residential and commercial applications.

Example: LP-MDC-STP-SPC-2-8-SI-FTD-L

| SERIES | EXT. LENGTH | FINISH | OPTICAL LENS |
|------------------|---|---|--|
| LP-MDC-STP-SPC-2 | 2 - 2ft 4 - 4ft 8 - 8ft C - Custom | SI - Silver BK - Black ¹ WH - White ¹ | FTD-L - Flat Diffuser ¹ FTO-L - Flat Opal ¹ FTC-L - Flat Clear |

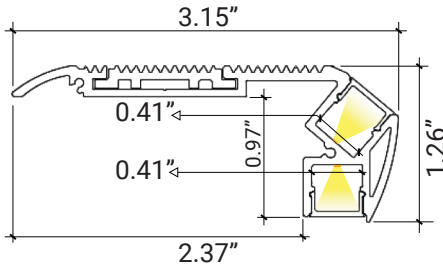
¹.MOQ (minimum order quantity) required for these options, please consult factory.

Compatible LB Series-24V LED Strip Lights

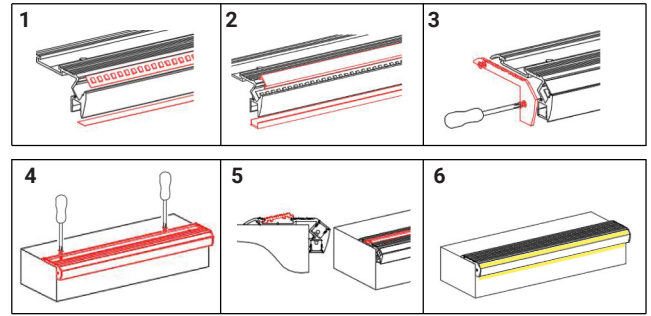
| | | | | | |
|---------------------|--|---|---------------------|--|--|
| LB1000-MN | | Power 2.9W/ft - Voltage 24V - CRI 90+ - LED Qty 37/ft - Lumens 280lm/ft | LB1000-ZZ-ST | | Power 3.6W/ft - Voltage 24V - CRI 90+ - LED Qty 43/ft - Lumens 455lm/ft |
| LB1000-LR | | Power 3.1W/ft - Voltage 24V - CRI 90+ - LED Qty 37/ft - Lumens 295lm/ft | LB3000-MN-ST | | Power 2.1W/ft - Voltage 24V - CRI 90+ - LED Qty 122/ft - Lumens 220lm/ft |
| LB1000-ST | | Power 7.2W/ft - Voltage 24V - CRI 95+ - LED Qty 72/ft - Lumens 875lm/ft | LB3000-ST | | Power 3W/ft - Voltage 24V - CRI 90+ - LED Qty 146/ft - Lumens 325lm/ft |
| LB1000-ST-HO | | Power 11W/ft - Voltage 24V - CRI 95+ - LED Qty 72/ft - Lumens 1400lm/ft | LB3000-ST-HE | | Power 5.8W/ft - Voltage 24V - CRI 90+ - LED Qty 88/ft - Lumens 940lm/ft |
| LB1000V-ST | | Power 6.6W/ft - Voltage 24V - CRI98+ - LED Qty 73/ft - Lumens 890lm/ft | LB3000-FC-ST | | Power 4.6W/ft - Voltage 24V - CRI 90+ - LED Qty 98/ft - Lumens 550lm/ft |
| LB1003-ST | | Power 3W/ft - Voltage 24V - CRI90+ - LED Qty 55/ft - Lumens 500lm/ft | LB3000-TWH | | Power 6.1W/ft - Voltage 24V - CRI 90+ - LED Qty 195/ft - Lumens 520lm/ft |
| LB1000-ST-SC | | Power 7W/ft - Voltage 24V - CRI90+ - LED Qty 61/ft - Lumens 1082lm/ft | LB4000-RGB | | Power 6.1W/ft - Voltage 24V - LED Qty 51/ft - Lumens 250lm/ft |



DIMENSIONS



MOUNTING



Install the LED strip light first, followed by the lens by pressing it into place, and then attach the end caps. Secure the profile to the surface by screwing it into place, and finally install the anti-slip PVC cover. Once completed, the installation is finished.

OPTICAL LENS

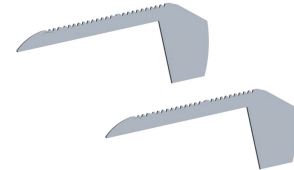


FTD-L - Flat Diffuser **INCLUDED**

END CAPS/INCLUDED



2 End Caps With Holes **INCLUDED**

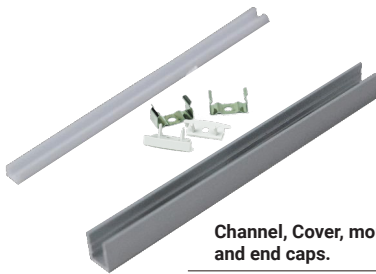


2 End Caps Without Holes **INCLUDED**

It Can be ordered in 3 different ways.

1. Everything will be shipped separately

RL
• Channel, cover, accessories and tape light will be cut and shipped to your desired length.



2. Pre-assembled and shipped separately as two units

PA
• Channel, cover, accessories and tape light will be cut and shipped to your desired length.
• Cover, end caps and clips will be assembled to the channel.
• Wiring accessories will be attached to the tape light.



3. Fully assembled and shipped as a single unit

FA
• Channel, cover, accessories and tape light will be cut and shipped to your desired length.
• Wiring accessories will be attached to the tape light.
• Tape light will be installed into the channel and ready to use.





COMPATIBLE TAPE LIGHT Ordering Guide

Power feed, jumpers and connectors compatible with this channel

| | LB1000-MN | LB1000-LR | LB1000-ST | LB1000-ST-HO | LB1000V-ST | LB1003-ST | LB1000-ST-SC | LB1004-ST |
|---------------------------|-----------|-----------|-----------|--------------|------------|-----------|--------------|-----------|
| Soldered Lead (SL) | ✓ | ✓ | ✓ | ✓ | ✓ | ✓ | ✓ | X |
| Soldered Jumper (JPSL) | ✓ | ✓ | ✓ | ✓ | ✓ | ✓ | ✓ | X |
| Power Connector (TW) | X | X | X | X | X | X | X | X |
| Tape Connector (TT) | X | X | X | X | X | X | X | X |
| Tape Jumper (JP) | X | X | X | X | X | X | X | X |
| Closed End (CE) | ✓ | ✓ | ✓ | ✓ | ✓ | ✓ | ✓ | X |
| DC Connector Male-(DCM) | ✓ | ✓ | ✓ | ✓ | ✓ | ✓ | ✓ | X |
| DC Connector Female-(DCF) | ✓ | ✓ | ✓ | ✓ | ✓ | ✓ | ✓ | X |

Power feed, jumpers and connectors compatible with this channel

| | LB3000-ST | LB3000-ST-HE | LB3000-FC-ST | LB3000-TWH | LB4000-RGB | LB3000-RGBW | LB4000-RGBTWH | LB4000-RGBW |
|---------------------------|-----------|--------------|--------------|------------|------------|-------------|---------------|-------------|
| Soldered Lead (SL) | ✓ | ✓ | ✓ | ✓ | ✓ | X | X | X |
| Soldered Jumper (JPSL) | ✓ | ✓ | ✓ | ✓ | ✓ | X | X | X |
| Power Connector (TW) | X | X | X | X | X | X | X | X |
| Tape Connector (TT) | X | X | X | X | X | X | X | X |
| Tape Jumper (JP) | X | X | X | X | X | X | X | X |
| Closed End (CE) | ✓ | ✓ | ✓ | ✓ | ✓ | X | X | X |
| DC Connector Male-(DCM) | ✓ | ✓ | ✓ | X | X | X | X | X |
| DC Connector Female-(DCF) | ✓ | ✓ | ✓ | X | X | X | X | X |

SL= Soldered Lead **JPSL**= Soldered Jumper **DCM**=DC Connector Male soldered **DCF**=DC Connector Female soldered
TW=Tape to Wire Power Feed **TT**=Tape to Tape Connector **JP**=Jumper Wire for Connectors **CE**=Closed end no connector

X Not compatible with this channel.

NOTE: The endcap hole should be enlarged to allow wiring to pass through, or the channel may be used without endcaps.



COMPATIBLE TAPE LIGHT
Ordering Guide

Power feed, jumpers and connectors compatible with this channel

| | LB1000-WL-ST | LB1000-WDM | LB1000-ZZ-ST | LB3000-MN-ST | | | | |
|---------------------------|--------------|------------|--------------|--------------|--|--|--|--|
| Soldered Lead (SL) | X | X | ✓ | ✓ | | | | |
| Soldered Jumper (JPSL) | X | X | ✓ | ✓ | | | | |
| Power Connector (TW) | X | X | X | X | | | | |
| Tape Connector (TT) | X | X | X | X | | | | |
| Tape Jumper (JP) | X | X | X | X | | | | |
| Closed End (CE) | X | X | ✓ | ✓ | | | | |
| DC Connector Male-(DCM) | X | X | ✓ | ✓ | | | | |
| DC Connector Female-(DCF) | X | X | ✓ | ✓ | | | | |

SL= Soldered Lead **JPSL**= Soldered Jumper **DCM**=DC Connector Male soldered **DCF**=DC Connector Female soldered
TW=Tape to Wire Power Feed **TT**=Tape to Tape Connector **JP**=Jumper Wire for Connectors **CE**=Closed end no connector

X Not compatible with this channel.

NOTE: The endcap hole should be enlarged to allow wiring to pass through, or the channel may be used without endcaps.



LP-MDC-STP-SPC-2

Lumi-PRO Step Aluminum Extrusion

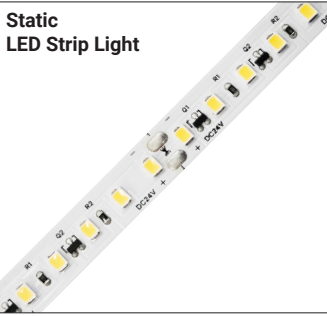
Refer to the tape light spec sheet for detailed information.



MINI LED Strip Light
Series-LB1000-MN | 280lm/ft - 2.9W/ft
Indoor Strip Light
Width / 0.16"/4mm
37 LEDs/FT

| SERIES | WATTAGE | LENGTH | CCT | VOLTAGE | WIRING ACCESSORIES |
|-----------|----------------|-------------------------------|---|-----------|---|
| LB1000-MN | 2.9W - 2.9W/ft | 16F - 16ft Roll C - Custom | 27K - 2700K 30K - 3000K 35K - 3500K 40K - 4000K 50K - 5000K | 24V - 24V | DCM - Wire to Wire Male Connector DCF - Wire to Wire Female Connector SL-2 - Soldered Lead JP SL-2 - Soldered Jumper |

SHIPPING OPTIONS
RL - Rolls 16ft
PA - Pre-Assembled
FA - Fully Assembled



Static LED Strip Light
Series-LB1000-LR | 295lm/ft - 3.1W/ft
Indoor Strip Light
Width / 0.39"/10mm
37 LEDs/FT

| SERIES | WATTAGE | LENGTH | CCT | VOLTAGE | WIRING ACCESSORIES |
|-----------|----------------|-------------------------------|---|-----------|---|
| LB1000-LR | 3.1W - 3.1W/ft | 52F - 52ft Roll C - Custom | 30K - 3000K 40K - 4000K 50K - 5000K | 24V - 24V | TT10-2 - Tape to Tape Connector TW10-2 - Tape to Wire Connector JP10-2 - Tape to Tape Jumper DCM - DC Male Connector DCF - DC Female Connector SL-2 - Soldered Lead JP SL-2 - Soldered Jumper |

SHIPPING OPTIONS
RL - Rolls 52ft
PA - Pre-Assembled
FA - Fully Assembled



Tight-Pitch LED Strip Light
Series-LB1000-ST | 235lm/ft - 1.9W/ft
Indoor Strip Light
Width / 0.39"/10mm
72 LEDs/FT

| SERIES | WATTAGE | LENGTH | CCT | VOLTAGE | WIRING ACCESSORIES |
|-----------|--|-------------------------------|--|-----------|---|
| LB1000-ST | 1.9W - 1.9W/ft 4.6W - 4.6W/ft 7.2W - 7.2W/ft | 16F - 16ft Roll C - Custom | 27K - 2700K 30K - 3000K 35K - 3500K 40K - 4000K 50K - 5000K 60K - 6000K | 24V - 24V | TT10-2T - Tape to Tape Connector TW10-2T - Power Connector JP10-2T - Tape to Tape Jumper DCM - Wire to Wire Male Connector DCF - Wire to Wire Female Connector SL-2 - Soldered Lead JP SL-2 - Soldered Jumper |

SHIPPING OPTIONS
RL - Rolls 16ft
PA - Pre-Assembled
FA - Fully Assembled



High-Output LED Strip Light
Series-LB1000-ST-HO | 1120lm/ft - 9W/ft
Indoor Strip Light
Width / 0.39"/10mm
72 LEDs/FT

| SERIES | WATTAGE | LENGTH | CCT | VOLTAGE | WIRING ACCESSORIES |
|--------------|----------------------------|-------------------------------|--|-----------|---|
| LB1000-ST-HO | 9W - 9W/ft 11W - 11W/ft | 16F - 16ft Roll C - Custom | 27K - 2700K 30K - 3000K 35K - 3500K 40K - 4000K 50K - 5000K 60K - 6000K | 24V - 24V | TT10-2T - Tape to Tape Connector TW10-2T - Power Connector JP10-2T - Tape to Tape Jumper DCM - Wire to Wire Male Connector DCF - Wire to Wire Female Connector SL-2 - Soldered Lead JP SL-2 - Soldered Jumper |

SHIPPING OPTIONS
RL - Rolls 16ft
PA - Pre-Assembled
FA - Fully Assembled



**CRI 98+
LED Strip Light**



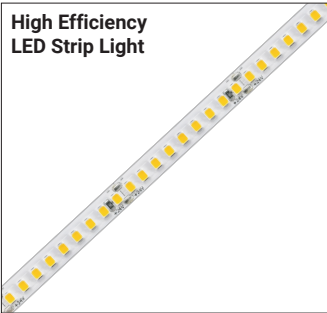
Series-LB1000V-ST | 890lm/ft-6.6W/ft
Indoor Strip Light
Width / 0.39" / 10mm
73 LEDs/FT

| SERIES | WATTAGE | LENGTH | CCT | VOLTAGE | WIRING ACCESSORIES |
|------------|----------------|-------------------------------|---|-----------|--|
| LB1000V-ST | 6.6W - 6.6W/ft | 16F - 16ft Roll C - Custom | 27K - 2700K 30K - 3000K 35K - 3500K 40K - 4000K 50K - 5000K | 24V - 24V | TW10-2T - Tape to Wire Connector JP10-2T - Tape to Tape Jumper DCM - DC Male Connector DCF - DC Female Connector SL-2 - Soldered Lead JP1SL-2 - Soldered Jumper |

SHIPPING OPTIONS

- RL - Rolls 16ft
- PA - Pre-Assembled
- FA - Fully Assembled

**High Efficiency
LED Strip Light**



Series-LB1003-ST | 500lm/ft - 3W/ft
Indoor Strip Light
Width / 0.3" / 8mm
55 LEDs/FT

| SERIES | WATTAGE | LENGTH | CCT | VOLTAGE | WIRING ACCESSORIES |
|-----------|--------------|-------------------------------|--|-----------|---|
| LB1003-ST | 3W - 2.9W/ft | 16F - 16ft Roll C - Custom | 27K - 2700K 30K - 3000K 35K - 3500K 40K - 4000K 50K - 5000K 65K - 6500K | 24V - 24V | TW8-2 - Power Connector JP8-2 - Tape to Tape Jumper DCM - Wire to Wire Male Connector DCF - Wire to Wire Female Connector SL-2 - Soldered Lead JP1SL-2 - Soldered Jumper |

SHIPPING OPTIONS

- RL - Rolls 16ft
- PA - Pre-Assembled
- FA - Fully Assembled

**Single Cut
LED Strip Light**



Series-LB1000-ST-SC | 1082lm/ft-7W/ft
Indoor Strip Light
Width / 0.3" / 8mm
61 LEDs/FT

| SERIES | WATTAGE | LENGTH | CCT | VOLTAGE | WIRING ACCESSORIES |
|--------------|--------------|-------------------------------|--|-----------|--|
| LB1000-ST-SC | 7W - 7.3W/ft | 13F - 13ft Roll C - Custom | 27K - 2700K 30K - 3000K 35K - 3500K 40K - 4000K 50K - 5000K 65K - 6500K | 24V - 24V | TW8-2 - Tape to Wire Connector JP8-2 - Tape to Tape Jumper DCM - DC Male Connector DCF - DC Female Connector SL-2 - Soldered Lead JP1SL-2 - Soldered Jumper |

SHIPPING OPTIONS

- RL - Rolls 16ft
- PA - Pre-Assembled
- FA - Fully Assembled

**COB Static White
LED Strip Light**



Series-LB3000-ST | 325lm/ft - 3W/ft
Indoor Strip Light
Width / 0.3"/8mm
146 LEDs/FT

| SERIES | WATTAGE | LENGTH | CCT | VOLTAGE | WIRING ACCESSORIES |
|-----------|------------|-------------------------------|--|-----------|--|
| LB3000-ST | 3W - 3W/ft | 16F - 16ft Roll C - Custom | 27K - 2700K 30K - 3000K 35K - 3500K 40K - 4000K 50K - 5000K 60K - 6000K | 24V - 24V | TT8-2C - Tape to Tape Connector TW8-2C - Power Connector JP8-2C - Tape to Tape Jumper DCM - Wire to Wire Male Connector DCF - Wire to Wire Female Connector SL-2 - Soldered Lead JP1SL-2 - Soldered Jumper |

SHIPPING OPTIONS

- RL - Rolls 16ft
- PA - Pre-Assembled
- FA - Fully Assembled



LP-MDC-STP-SPC-2

Lumi-PRO Step Aluminum Extrusion

Refer to the tape light spec sheet for detailed information.



Series-LB3000-ST-HE | 940lm/ft-5.8W/ft
Indoor Strip Light
Width / 0.39" / 10mm
88 LEDs/FT

| SERIES | WATTAGE | LENGTH | CCT | VOLTAGE | WIRING ACCESSORIES |
|--------------|----------------|-------------------------------|---|-----------|---|
| LB3000-ST-HE | 5.8W - 5.8W/ft | 16F - 16ft Roll C - Custom | 27K - 2700K 30K - 3000K 35K - 3500K 40K - 4000K 50K - 5000K | 24V - 24V | TT10-2BC - Tape to Tape Connector TW10-2BC - Tape to Wire Connector JP10-2BC - Tape to Tape Jumper DCM - DC Male Connector DCF - DC Female Connector SL-2 - Soldered Lead JPSL-2 - Soldered Jumper |

| SHIPPING OPTIONS |
|--|
| RL - Rolls 16ft PA - Pre-Assembled FA - Fully Assembled |



Series-LB3000-FC-ST | 550lm/ft-4.6W/ft
Indoor Strip Light
Width / 0.39" / 10mm
98 LEDs/FT

| SERIES | WATTAGE | LENGTH | CCT | VOLTAGE | WIRING ACCESSORIES |
|--------------|----------------|-------------------------------|---|-----------|---|
| LB3000-FC-ST | 4.6W - 4.6W/ft | 16F - 16ft Roll C - Custom | 27K - 2700K 30K - 3000K 35K - 3500K 40K - 4000K 50K - 5000K | 24V - 24V | TT10-2BC - Tape to Tape Connector TW10-2BC - Tape to Wire Connector JP10-2BC - Tape to Tape Jumper DCM - DC Male Connector DCF - DC Female Connector SL-2 - Soldered Lead JPSL-2 - Soldered Jumper |

| SHIPPING OPTIONS |
|--|
| RL - Rolls 16ft PA - Pre-Assembled FA - Fully Assembled |



Series-LB3000-TWH | 520lm/ft - 6.1W/ft
Indoor Strip Light
Width / 0.39"/10mm
195 LEDs/FT

| SERIES | WATTAGE | LENGTH | TECHNOLOGY | VOLTAGE | WIRING ACCESSORIES |
|--------|----------------|-------------------------------|-------------------------------|-----------|--|
| LB3000 | 6.1W - 6.1W/ft | 16F - 16ft Roll C - Custom | TWH-65K-27K - TWH/6500K-2700K | 24V - 24V | TW10-3C - Power Connector JP10-3C - Tape to Tape Jumper SL-3 - Soldered Lead JPSL-3 - Soldered Jumper |

| SHIPPING OPTIONS |
|--|
| RL - Rolls 16ft PA - Pre-Assembled FA - Fully Assembled |



Series-LB3000-MN-ST | 220lm/ft -2W/ft
Indoor Strip Light
Width / 0.16"/4mm
122 LEDs/FT

| SERIES | WATTAGE | LENGTH | CCT | VOLTAGE | WIRING ACCESSORIES |
|--------------|--------------|-------------------------------|--|-----------|--|
| LB3000-MN-ST | 2W - 2.1W/ft | 16F - 16ft Roll C - Custom | 27K - 2700K 30K - 3000K 40K - 4000K 65K - 6500K | 24V - 24V | DCM - Wire to Wire Male Connector DCF - Wire to Wire Female Connector SL-2 - Soldered Lead JPSL-2 - Soldered Jumper |

| SHIPPING OPTIONS |
|--|
| RL - Rolls 16ft PA - Pre-Assembled FA - Fully Assembled |



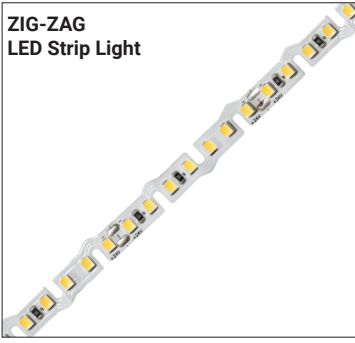
COMPATIBLE TAPE LIGHT

LP-MDC-STP-SPC-2

Lumi-PRO Step Aluminum Extrusion

Refer to the tape light spec sheet for detailed information.

ZIG-ZAG LED Strip Light



Series-LB1000-ZZ-ST | 455lm/ft - 3.6W/ft
Indoor Strip Light
Width / 0.39" / 10mm
43 LEDs/FT

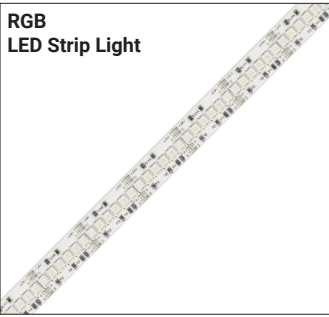
| | | | | | |
|--------------|--|--|--|--|--|
| LB1000-ZZ-ST | | | | | |
|--------------|--|--|--|--|--|

| SERIES | WATTAGE | LENGTH | CCT | VOLTAGE | WIRING ACCESSORIES |
|--------------|----------------|-------------------------------|--|-----------|---|
| LB1000-ZZ-ST | 3.6W - 3.6W/ft | 16F - 16ft Roll C - Custom | 27K - 2700K 30K - 3000K 35K - 3500K 40K - 4000K 50K - 5000K 65K - 6500K | 24V - 24V | TW8-2 - Tape to Wire Connector JP8-2 - Tape to Tape Jumper DCM - DC Male Connector DCF - DC Female Connector SL-2 - Soldered Lead JPSL-2 - Soldered Jumper |

SHIPPING OPTIONS

- RL - Rolls 16ft
- PA - Pre-Assembled
- FA - Fully Assembled

RGB LED Strip Light



Series-LB4000-RGB | 250lm/ft - 6.1W/ft
Indoor Strip Light
Width / 0.39" / 10mm
51 LEDs/FT

| | | | | | |
|--------|--|--|--|--|--|
| LB4000 | | | | | |
|--------|--|--|--|--|--|

| SERIES | WATTAGE | LENGTH | COLOR | VOLTAGE | WIRING ACCESSORIES |
|--------|----------------|-------------------------------|-----------|-----------|--|
| LB4000 | 6.1W - 6.1W/ft | 16F - 16ft Roll C - Custom | RGB - RGB | 24V - 24V | TT10-4 - Tape to Tape Connector TW10-4 - Power Connector JP10-4 - Tape to Tape Jumper SL-4 - Soldered Lead JPSL-4 - Soldered Jumper |

SHIPPING OPTIONS

- RL - Rolls 16ft
- PA - Pre-Assembled
- FA - Fully Assembled