

Lumi-PRO Extrusion SURFACE CORNER

Lumi-Pro Extrusion Surface Corner LED profiles are widely embraced in interior design applications, offering a practical and visually appealing lighting solution. Perfect for creating a seamless and **sophisticated lighting effect within walls, ceilings, or furniture**, these extrusions bring a touch of elegance to any space.

The installation of **Lumi-Pro Surface Corner LED Extrusions** is a straightforward process that demands minimal effort. Easily integrated into the desired area using **screws or clips**, these extrusions **eliminate the need for complex installation procedures**.

Designed specifically for use with our **LB series LED Light Strips**, these extrusions provide a versatile and customizable lighting solution for distinct spaces within **residential, commercial, or hospitality** settings.

Example: LP-MDC-S90-025-8-SI-90D

SERIES	EXT. LENGTH	FINISH	OPTICAL LENS
LP-MDC-S90-025	2 - 2ft 4 - 4ft 8 - 8ft C - Custom	SI - Silver BK - Black ¹ WH - White ¹	90D - 90° Diffuser 90P - 90° Opal ¹ 90T - 90° Transparent ¹ 90B - 90° Black ¹

¹.MOQ (minimum order quantity) required for these options, please consult factory.

Series LP-MDC-S90-025

Tape light width 0.16" recommended.

Extrusion Length: 2ft / 4ft / 8ft

Finish: Silver, Black, White.

Mounting: Surface clip/**INCLUDED**.

End caps: With hole / Without hole/**INCLUDED**.

Application: Architectural, Residential, Commercial.

Experience unrivaled performance with our precision-engineered, high density tape light, designed to meet the demands of even the most challenging applications.

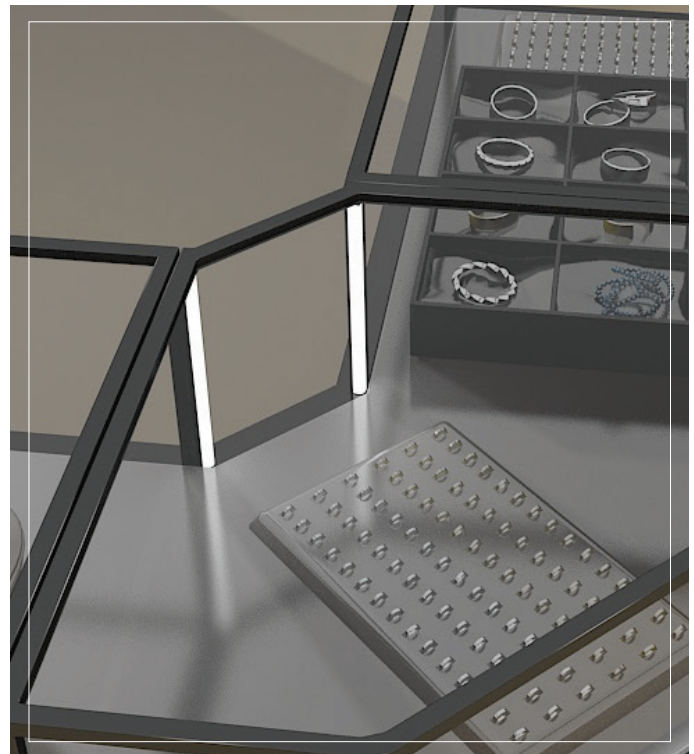
LB Series 24V LED Light Strips

COMPATIBLE TAPE LIGHT

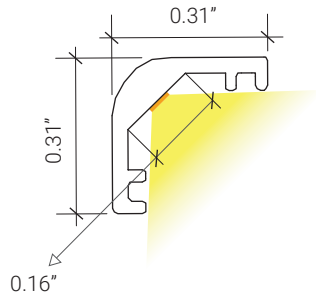
LB1000-MN



Power 2.9W/ft - Voltage 24V - CRI 90+ - LED Qty 37/ft - Lumens 280lm/ft



DIMENSIONS



MOUNTING



Profile with surface mounting clip

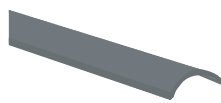


Surface clip/**INCLUDED**

OPTICAL LENSES



90D - 90° Diffuser

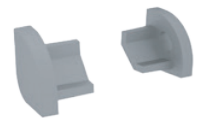


90B - 90° Black

END CAPS INCLUDED



WH/With Hole



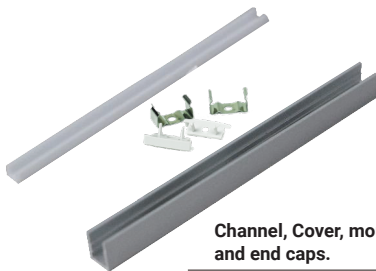
WTH/Without Hole

Surface Clip and End Caps **Included**.

It Can be ordered in 3 different ways.

1. Everything will be shipped separately

- Channel, cover, accessories and tape light will be cut and shipped to your desired length.



Channel, Cover, mounting clips, and end caps.



Tape Light if ordered.

Accessories if ordered.



2. Pre-assembled and shipped separately as two units

- Channel, cover, accessories and tape light will be cut and shipped to your desired length.
- Cover, end caps and clips will be assembled to the channel.
- Wiring accessories will be attached to the tape light.



Channel will be cut and assembled to your desired length.



Wiring accessories attached to the tape light.

3. Fully assembled and shipped as a single unit

- Channel, cover, accessories and tape light will be cut and shipped to your desired length.
- Wiring accessories will be attached to the tape light.
- Tape light will be installed into the channel and ready to use.



Refer to the next page for **COMPATIBLE** Tape Lights.

COMPATIBLE STRIP LIGHT



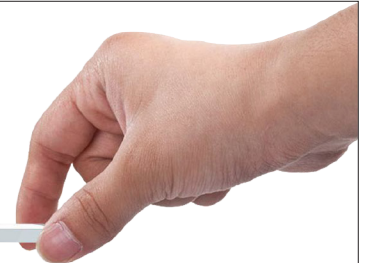
MINI
LED Strip Light

Series-LB1000-MN | **280lm/ft - 2.9W/ft**
Indoor Strip Light
Width / 0.16"/4mm
37 LEDs/FT

LB1000-MN					
SERIES	WATTAGE	LENGTH	CCT	VOLTAGE	WIRING ACCESSORIES
LB1000-MN	2.9W - 2.9W/ft	16F - 16ft Roll	27K - 2700K 30K - 3000K 35K - 3500K 40K - 4000K 50K - 5000K	24V - 24V	DCM - Wire to Wire Male Connector DCF - Wire to Wire Female Connector SL-2 - Soldered Lead JPSL-2 - Soldered Jumper

Mini-Profile Linear LED Lighting

1/4



Mini-Profile Linear LED Lighting

The Mini-Profile is designed with a compact size and a narrow luminous surface, which emits ultra-fine light beams. This offers a unique visual experience. It generates less heat, boasts high luminous efficiency, saves energy, and is environmentally friendly. Additionally, it contributes to protecting your vision.

