

## Lumi-PRO Extrusion TRIMLESS

Lumi-Pro Extrusion Trimless LED profiles are widely embraced in interior design applications, offering a practical and visually appealing lighting solution. Perfect for creating a seamless and **sophisticated lighting effect within walls, ceilings, or furniture**, these extrusions bring a touch of elegance to any space.

Designed specifically for use with our **LB series LED Light Strips**, these extrusions provide a versatile and customizable lighting solution for distinct spaces within **residential, commercial, or hospitality** settings.

In essence, **Lumi-Pro Extrusions transcend mere illumination**. They embody a fusion of innovation, aesthetics, and practicality, redefining how lighting integrates into **interior spaces**.

Example: LP-MDC-RTL-025-8-SI-FTD

SERIES	EXT. LENGTH	FINISH	OPTICAL LENS
LP-MDC-RTL-025	2 - 2ft 4 - 4ft 8 - 8ft C - Custom	SI - Silver BK - Black <sup>1</sup> WH - White <sup>1</sup>	FTD - Flat Diffuser FTO - Flat Opal <sup>1</sup> FTT - Flat Transparent <sup>1</sup> FTB - Flat Black <sup>1</sup>

<sup>1</sup>.MOQ (minimum order quantity) required for these options, please consult factory.

### Series LP-MDC-RTL-025

Tape light width 0.16" recommended.

Extrusion Length: 2ft / 4ft / 8ft

Finish: Silver, Black, White.

Mounting: Trimless.

End cap options: With hole / Without hole/**INCLUDED**.

Application: Architectural, Residential, Commercial.

Experience unrivaled performance with our precision-engineered, high density tape light, designed to meet the demands of even the most challenging applications.

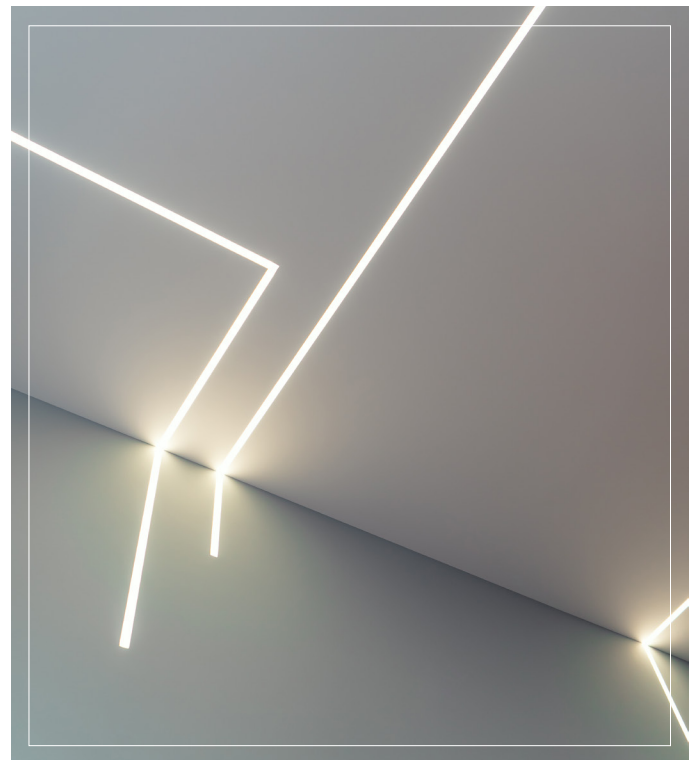
## LB Series 24V LED Light Strips

### COMPATIBLE TAPE LIGHT

LB1000-MN

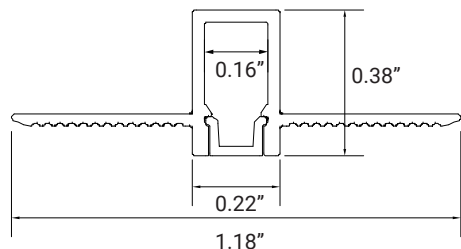


Power 2.9W/ft - Voltage 24V - CRI 90+ - LED Qty 37/ft - Lumens 280lm/ft

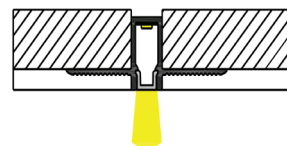




#### DIMENSIONS



#### MOUNTING

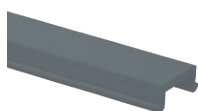


Profile trimless mounting

#### OPTICAL LENSES



FTD/Flat Diffuser

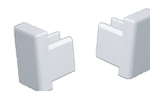


FTB/Flat Black

#### END CAPS INCLUDED



WH/With Hole

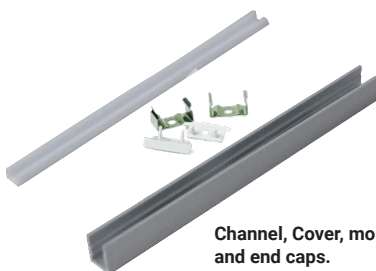


WTH/Without Hole

It Can be ordered in 3 different ways.

#### 1. Everything will be shipped separately

- Channel, cover, accessories and tape light will be cut and shipped to your desired length.



Channel, Cover, mounting clips, and end caps.



Tape Light if ordered.

Accessories if ordered.



#### 2. Pre-assembled and shipped separately as two units

- Channel, cover, accessories and tape light will be cut and shipped to your desired length.
- Cover, end caps and clips will be assembled to the channel.
- Wiring accessories will be attached to the tape light.



Channel will be cut and assembled to your desired length.



Wiring accessories attached to the tape light.

#### 3. Fully assembled and shipped as a single unit

- Channel, cover, accessories and tape light will be cut and shipped to your desired length.
- Wiring accessories will be attached to the tape light.
- Tape light will be installed into the channel and ready to use.



Refer to the next page for COMPATIBLE Tape Lights.



COMPATIBLE STRIP LIGHT



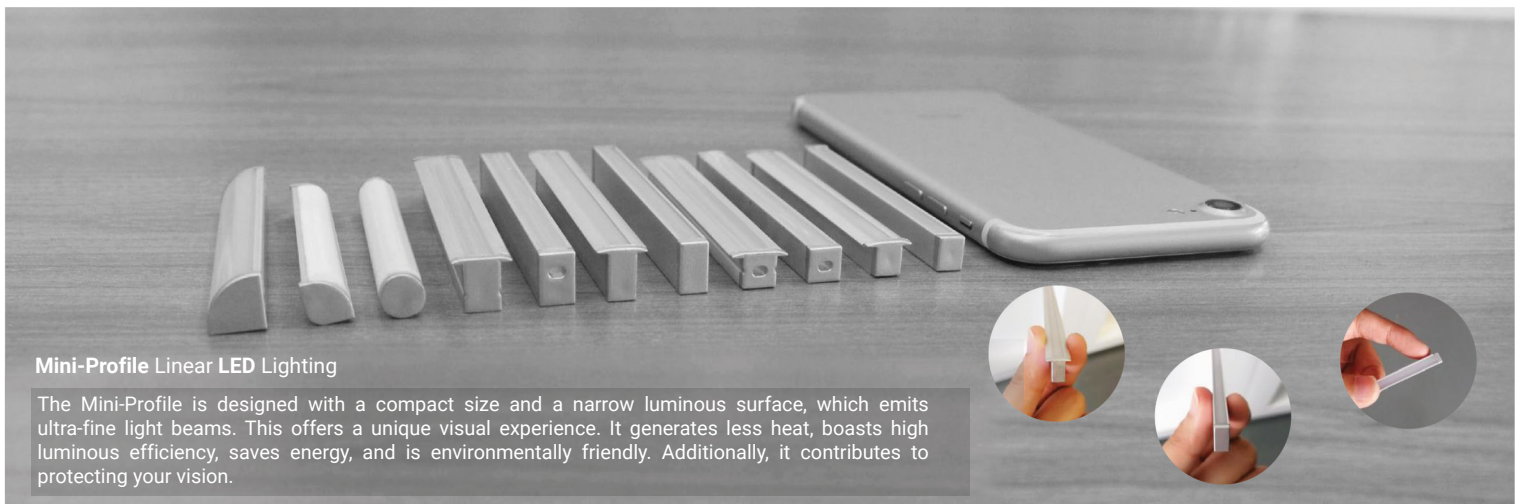
**MINI**  
**LED Strip Light**

Series-LB1000-MN | 280lm/ft - 2.9W/ft  
Indoor Strip Light  
Width / 0.16"/4mm  
37 LEDs/FT

LB1000-MN					
SERIES	WATTAGE	LENGTH	CCT	VOLTAGE	WIRING ACCESSORIES
LB1000-MN	2.9W - 2.9W/ft	16F - 16ft Roll	27K - 2700K 30K - 3000K 35K - 3500K 40K - 4000K 50K - 5000K	24V - 24V	DCM - Wire to Wire Male Connector DCF - Wire to Wire Female Connector SL-2 - Soldered Lead JPSL-2 - Soldered Jumper

**Mini-Profile Linear LED Lighting**

1/4



**Mini-Profile Linear LED Lighting**

The Mini-Profile is designed with a compact size and a narrow luminous surface, which emits ultra-fine light beams. This offers a unique visual experience. It generates less heat, boasts high luminous efficiency, saves energy, and is environmentally friendly. Additionally, it contributes to protecting your vision.