

Lumi-PRO Extrusion RECESSED

Lumi-Pro Extrusion Recessed LED profiles are widely embraced in interior design applications, offering a practical and visually appealing lighting solution specifically designed for recessed installations. Perfect for **creating a seamless and sophisticated lighting effect** within walls, ceilings, or furniture, these extrusions bring a touch of elegance to any space.

The installation of Lumi-Pro recessed LED profiles is a straightforward process that demands minimal effort. Easily integrated into the desired recessed area using **screws or clips**, these extrusions eliminate the need for complex installation procedures.

Tailored specifically for use with our **LB series LED Light Strips**, these extrusions provide a versatile and customizable lighting solution for distinct recessed spaces within **residential, commercial, or hospitality settings**.

Example: LP-MDC-RFT-025-8-SI-FTD

SERIES	EXT. LENGTH	FINISH	OPTICAL LENS
LP-MDC-RFT-025	2 - 2ft 4 - 4ft 8 - 8ft C - Custom	SI - Silver BK - Black ¹ WH - White ¹	FTD - Flat Diffuser FTO - Flat Opal ¹ FTT - Flat Transparent ¹ FTB - Flat Black ¹

¹MOQ (minimum order quantity) required for these options, please consult factory.

Series LP-MDC-RFT-025

Tape light width 0.20" recommended.
Extrusion Length: 2ft / 4ft / 8ft
Finish: Silver, Black, White.
Mounting: Surface clip/**INCLUDED**.
End caps: With hole / Without hole/**INCLUDED**.
Application: Architectural, Residential, Commercial.

Experience unrivaled performance with our precision-engineered, high density strip light, designed to meet the demands of even the most challenging applications.

LB Series 24V LED Strip Light

COMPATIBLE TAPE LIGHT

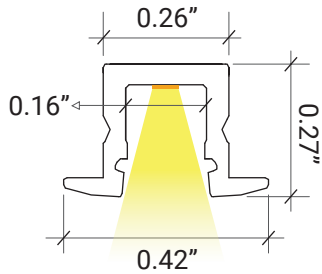
LB1000-MN



Power 2.9W/ft - Voltage 24V - CRI 90+ - LED Qty 37/ft - Lumens 280lm/ft



DIMENSIONS



MOUNTING



Profile with surface mounting clip

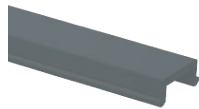


Surface Clip/**INCLUDED**

OPTICAL LENSES



FTD/Flat Diffuser



FTB/Flat Black

END CAPS INCLUDED



WH/With Hole



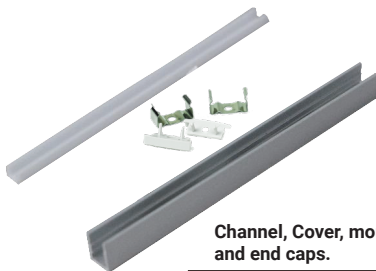
WTH/Without Hole

Surface clip and end caps included.

It Can be ordered in 3 different ways.

1. Everything will be shipped separately **2. Pre-assembled and shipped separately as two units** **3. Fully assembled and shipped as a single unit**

- Channel, cover, accessories and tape light will be cut and shipped to your desired length.



Channel, Cover, mounting clips, and end caps.



Tape Light if ordered.

Accessories if ordered.



- Channel, cover, accessories and tape light will be cut and shipped to your desired length.
- Cover, end caps and clips will be assembled to the channel.
- Wiring accessories will be attached to the tape light.



Channel will be cut and assembled to your desired length.



Wiring accessories attached to the tape light.

- Channel, cover, accessories and tape light will be cut and shipped to your desired length.
- Wiring accessories will be attached to the tape light.
- Tape light will be installed into the channel and ready to use.



Refer to the next page for **COMPATIBLE** Tape Lights.

COMPATIBLE STRIP LIGHT

Ordering Guide

	LB1000-MN	LB1000-LR	LB1000-ST	LB1000-WL-ST	LB1000-WDM	LB1004-ST	LB1003-ST	LB3000-ST	LB3000-TWH	LB3000-RGBW	LB4000-RGBTW H	LB4000-RGBW	LB4000-RGB	LB9000-RGBW
	MINI LED Static White	Static White	Static White	Outdoor Static White	Warm Dim LED	Mini Neon	High efficiency	COB White	COVE Linear Tunable White	COB Linear RGBW	RGB Tunable White	RGB White	RGB	RGB-DMX
CCT	2.7K 3k 35K 4K 5K	3K 4K 5K	27K 3K 3.5K 4K 5K 6.5K	3K 4K 5K	18/3K 2.7/6.5K	22K 27K 3K 4K 5K 6K	27K 3K 35K 4K 5K 6.5k	27K 3K 35K 4K 5K 6K	2.7/6.5K	3K	27/65	3K	RGB	RGBW 3K
W/LF	2.9	3.1	1.9 4.6 7.2 9 11	1.9 4.6	4.4	5.9	2.9	3	6.1	6.1	3.7	5.9	6.1	6

ST-1000 7.2, 9.0 and 11 W/LF for use with connector compatible channel only.

Power feed, jumpers and tape connectors compatible with this channel

Specify (1) Option for each end of LED Strip

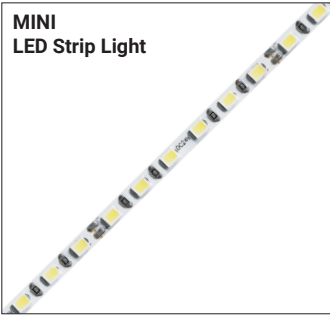
Soldered Lead	SL-2	X	X	X	X	X	X	X	X	X	X	X	X	X
Soldered Jumper	JPSL-2	X	X	X	X	X	X	X	X	X	X	X	X	X
Power Connector		X	X	X	X	X	X	X	X	X	X	X	X	X
Tape Connector		X	X	X	X	X	X	X	X	X	X	X	X	X
Tape Jumper		X	X	X	X	X	X	X	X	X	X	X	X	X
Closed End	CE	X	X	X	X	X	X	X	X	X	X	X	X	X
DC Connector Male-soldered	DCM	X	X	X	X	X	X	X	X	X	X	X	X	X
DC Connector Female-soldered	DCF	X	X	X	X	X	X	X	X	X	X	X	X	X

SL= Soldered Lead **JPSL**= Soldered Jumper **DCM**=DC Connector Male soldered **DCF**=DC Connector Female soldered

TW=Tape to Wire Power Feed **TT**=Tape to Tape Connector **JP**=Jumper Wire for Connectors **CE**=Closed end no connector

Not available with this channel

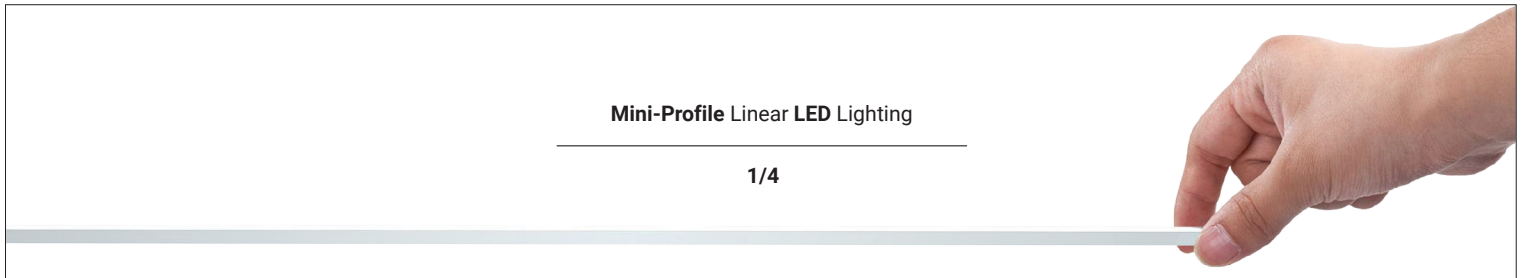
COMPATIBLE STRIP LIGHT



Series-LB1000-MN | 280lm/ft - 2.9W/ft
Indoor Strip Light
Width / 0.16"/4mm
37 LEDs/FT

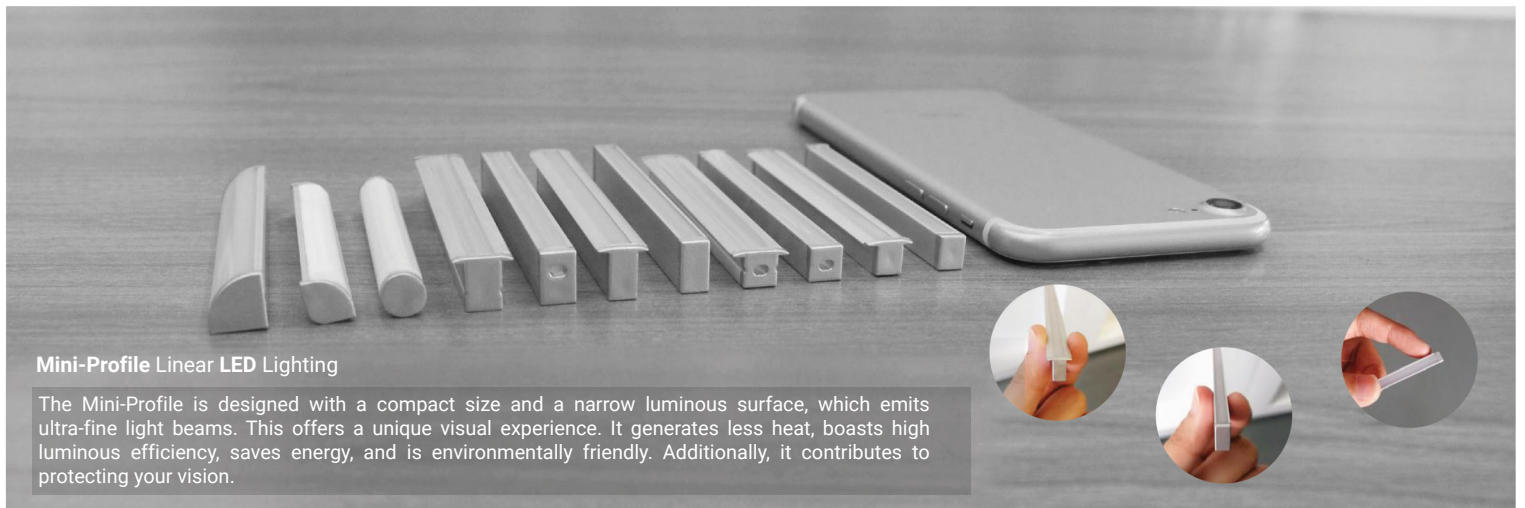
LB1000-MN					
SERIES	WATTAGE	LENGTH	CCT	VOLTAGE	WIRING ACCESSORIES
LB1000-MN	2.9 - 2.9W/ft	16F - 16ft Roll	27K - 2700K 30K - 3000K 35K - 3500K 40K - 4000K 50K - 5000K	24V - 24V	DCM - Wire to Wire Male Connector DCF - Wire to Wire Female Connector SL-2 - Soldered Lead JPSL-2 - Soldered Jumper

CHANNEL	STRIP LIGHT	WIRING ACCESSORIES
ASB - Assembled SEP - Separated	INS - Installed SEP - Separated	INS - Installed SEP - Separated



Mini-Profile Linear LED Lighting

1/4



Mini-Profile Linear LED Lighting

The Mini-Profile is designed with a compact size and a narrow luminous surface, which emits ultra-fine light beams. This offers a unique visual experience. It generates less heat, boasts high luminous efficiency, saves energy, and is environmentally friendly. Additionally, it contributes to protecting your vision.