

**Lumi-PRO Extrusion SUSPENDED**

**Lumi-Pro Extrusion Suspended LED profiles** are widely embraced in interior design applications, offering a practical and visually appealing lighting solution. **Perfect for creating a seamless and sophisticated lighting effect within ceilings**, these extrusions bring a touch of elegance to any space.

The installation of **Lumi-Pro Suspended LED Extrusions** is a straightforward process that demands minimal effort. Easily integrated into the desired area using **adjustable cords**, these extrusions eliminate the need for complex installation procedures.

Designed specifically for use with our **LB series LED Light Strips**, these extrusions provide a versatile and customizable lighting solution for distinct spaces within **residential, commercial, or hospitality** settings.

**Example: LP-LGC-SPD-2-8-BK-FTD**

SERIES	EXT. LENGTH	FINISH	OPTICAL LENS
LP-LGC-SPD-2	2 - 2ft 4 - 4ft 8 - 8ft C - Custom	BK - Black WH - White	FTD - Flat Diffuser FTO - Flat Opal <sup>1</sup> FTT - Flat Transparent <sup>1</sup> FTB - Flat Black <sup>1</sup>

<sup>1</sup>.MOQ (minimum order quantity)required for these options, please consult factory.

**Series LP-LGC-SPD-2**

**Tape light width** 0.3" recommended.

**Extrusion Length:** 2ft / 4ft / 8ft

**Finish:** Black, White.

**Mounting:** Suspended Cable/ **INCLUDED**.

**End cap options:** With hole / Without hole/**INCLUDED**.

**Application:** Architectural, Residential, Commercial.

**Experience unrivaled performance** with our **precision-engineered, high density strip light**, designed to meet the demands of even **the most challenging applications**.

**LB Series 24V LED Strip Light**

**COMPATIBLE STRIP LIGHT**

**LB1000-MN**



Power 2.9W/ft - Voltage 24V - CRI 90+ - LED Qty 37/ft - Lumens 280lm/ft

**LB1003-ST**

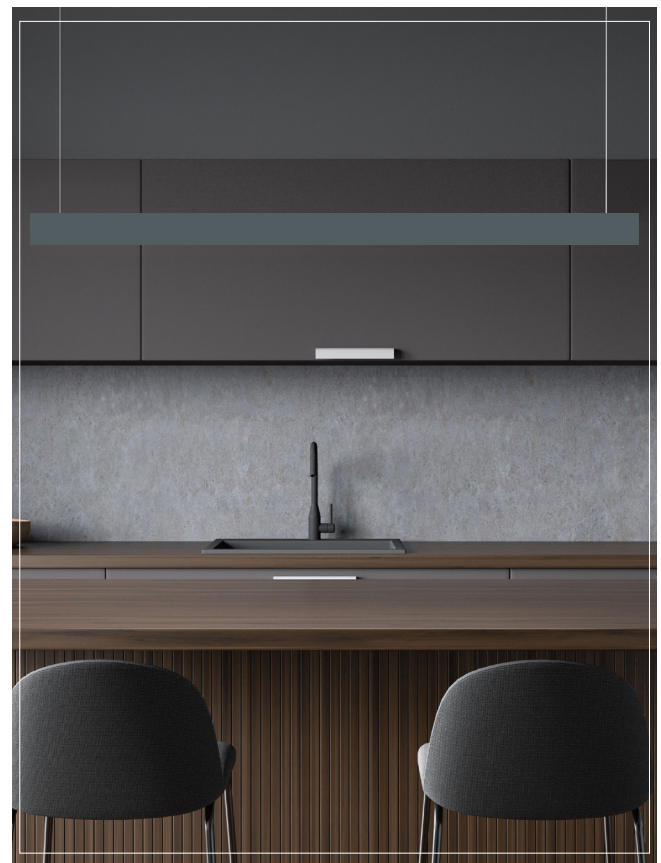


Power 2.9W/ft - Voltage 24V - CRI90+ - LED Qty 55/ft - Lumens 500lm/ft

**LB3000-ST**

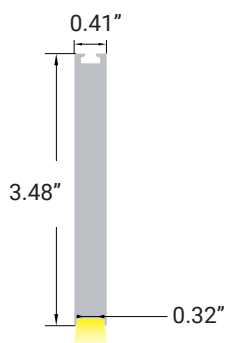


Power 3.0W/ft - Voltage 24V - CRI 90+ - LED Qty 146/ft - Lumens 325lm/ft





#### DIMENSIONS



#### MOUNTING



Profile with suspended cable mounting



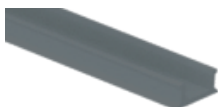
3ft/length

Suspended Cable/**INCLUDED**

#### OPTICAL LENSES

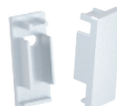


FTD - Flat Diffuser



FTB - Flat Black

#### END CAPS/INCLUDED



WH/With Hole



WTH/Without Hole

Suspended Cable and end caps **INCLUDED**.

It Can be ordered in 3 different ways.

#### 1. Everything will be shipped separately

- Channel, cover, accessories and tape light will be cut and shipped to your desired length.



Channel, Cover, mounting clips, and end caps.



Tape Light if ordered.

Accessories if ordered.



#### 2. Pre-assembled and shipped separately as two units

- Channel, cover, accessories and tape light will be cut and shipped to your desired length.
- Cover, end caps and clips will be assembled to the channel.
- Wiring accessories will be attached to the tape light.



Channel will be cut and assembled to your desired length.



Wiring accessories attached to the tape light.

#### 3. Fully assembled and shipped as a single unit

- Channel, cover, accessories and tape light will be cut and shipped to your desired length.
- Wiring accessories will be attached to the tape light.
- Tape light will be installed into the channel and ready to use.



Refer to the next page for **COMPATIBLE** Tape Lights.



COMPATIBLE STRIP LIGHT

# Ordering Guide

	LB1000-MN	LB1000-LR	LB1000-ST	LB1000-WL-ST	LB1000-WDM	LB1004-ST	LB1003-ST	LB3000-ST	LB3000-TWH	LB3000-RGBW	LB4000-RGBTW-H	LB4000-RGBW	LB4000-RGB	LB9000-RGBW
	MINI LED Static White	Static White	Static White	Outdoor Static White	Warm Dim LED	Mini Neon	High efficiency	COB White	COVE Linear Tunable White	COB Linear RGBW	RGB Tunable White	RGB White	RGB	RGB-DMX
CCT	2.7K	3K	27K	3K	18/3K	22K	27K	27K	2.7/6.5K	3K	27/65	3K	RGB	RGBW 3K
	3k	4K	3K	4K	2.7/6.5K	27K	3K	3K						
	35K	5K	3.5K	5K		3K	35K	35K						
	4K		4K			4K	4K	4K						
	5K		5K			5K	5K	5K						
			6.5K			6K	6.5k	6K						
W/LF	2.9	3.1	1.9	1.9	4.4	5.9	2.9	3	6.1	6.1	3.7	5.9	6.1	6
			4.6	4.6										
			7.2											
			9											
			11											
ST-1000 7.2, 9.0 and 11 W/LF for use with connector compatible channel only.														

## Power feed, jumpers and tape connectors compatible with this channel

Specify (1) Option for each end of LED Strip														
Soldered Lead	SL-2	X	X	X	X	X	SL-2	SL-2	X	X	X	X	X	X
Soldered Jumper	JPSL-2	X	X	X	X	X	JPSL-2	JPSL-2	X	X	X	X	X	X
Power Connector	X	X	X	X	X	X	X	X	X	X	X	X	X	X
Tape Connector	X	X	X	X	X	X	X	X	X	X	X	X	X	X
Tape Jumper	X	X	X	X	X	X	X	X	X	X	X	X	X	X
Closed End	CE	X	X	X	X	X	CE	CE	X	X	X	X	X	X
DC Connector Male-soldered	DCM	X	X	X	X	X	DCM	DCM	X	X	X	X	X	X
DC Connector Female-soldered	DCF	X	X	X	X	X	DCF	DCF	X	X	X	X	X	X

**SL**= Soldered Lead **JPSL**= Soldered Jumper **DCM**=DC Connector Male soldered **DCF**=DC Connector Female soldered

**TW**=Tape to Wire Power Feed **TT**=Tape to Tape Connector **JP**=Jumper Wire for Connectors **CE**=Closed end no connector

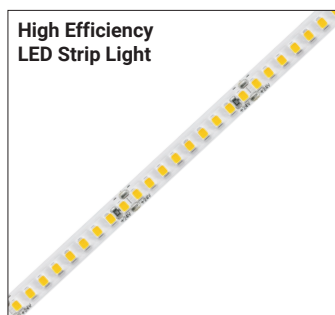
Not available with  
this channel





**Series-LB1000-MN** | 280lm/ft - 2.9W/ft  
Indoor Strip Light  
Width / 0.16"/4mm  
37 LEDs/FT

LB1000-MN					
SERIES	WATTAGE	LENGTH	CCT	VOLTAGE	WIRING ACCESSORIES
LB1000-MN	2.9W - 2.9W/ft	16F - 16ft Roll	27K - 2700K 30K - 3000K 35K - 3500K 40K - 4000K 50K - 5000K	24V - 24V	DCM - Wire to Wire Male Connector DCF - Wire to Wire Female Connector SL-2 - Soldered Lead JPSL-2 - Soldered Jumper
					</



**Series-LB1003-ST** | 500lm/ft - 2.9W/ft  
Indoor Strip Light  
Width / 0.31"/8mm  
55 LEDs/FT

LB1003-ST					
SERIES	WATTAGE	LENGTH	CCT	VOLTAGE	WIRING ACCESSORIES
LB1003-ST	3W - 2.9W/ft	16F - 16ft Roll	27K - 2700K 30K - 3000K 35K - 3500K 40K - 4000K 50K - 5000K 65K - 6500K	24V - 24V	TW8-2 - Power Connector TT8-2 - Tape to Tape Connector JP8-2 - Tape to Tape Jumper DCM - Wire to Wire Male Connector DCF - Wire to Wire Female Connector SL-2 - Soldered Lead JPSL-2 - Soldered Jumper



**Series-LB3000-ST** | 325lm/ft - 3W/ft  
Indoor Strip Light  
Width / 0.3"/7.5mm  
146 LEDs/FT

LB3000-ST					
SERIES	WATTAGE	LENGTH	CCT	VOLTAGE	WIRING ACCESSORIES
LB3000-ST	3W - 3W/ft	16F - 16ft Roll	27K - 2700K 30K - 3000K 35K - 3500K 40K - 4000K 50K - 5000K 60K - 6000K	24V - 24V	TW8-2C - Power Connector TT8-2C - Tape to Tape Connector JP8-2C - Tape to Tape Jumper DCM - Wire to Wire Male Connector DCF - Wire to Wire Female Connector SL-2 - Soldered Lead JPSL-2 - Soldered Jumper