

### Lumi-PRO Extrusion SURFACE CORNER

**Lumi-Pro Extrusion Surface Corner LED profiles** are widely embraced in interior design applications, offering a practical and visually appealing lighting solution. Perfect for creating a seamless and **sophisticated lighting effect within walls, ceilings, or furniture**, these extrusions bring a touch of elegance to any space.

The installation of **Lumi-Pro Surface Corner LED Extrusions** is a straightforward process that demands minimal effort. Easily integrated into the desired area using **screws or clips**, these extrusions **eliminate the need for complex installation procedures**.

Designed specifically for use with our **LB series LED Light Strips**, these extrusions provide a versatile and customizable lighting solution for distinct spaces within **residential, commercial, or hospitality** settings.

Example: LP-LGC-S90-025-8-SI-90D

SERIES	EXT. LENGTH	FINISH	OPTICAL LENS
LP-LGC-S90-025	2 - 2ft 4 - 4ft 8 - 8ft C - Custom	SI - Silver BK - Black <sup>1</sup> WH - White <sup>1</sup>	90D - 90° Diffuser 90P - 90° Opal <sup>1</sup> 90T - 90° Transparent <sup>1</sup> 90B - 90° Black <sup>1</sup>

<sup>1</sup>MOQ (minimum order quantity) required for these options, please consult factory.

### Series LP-LGC-S90-025

**Tape light width** 0.20" recommended.

**Extrusion Length:** 2ft / 4ft / 8ft

**Finish:** Silver, Black, White.

**Mounting:** Surface clip/**INCLUDED**.

**End caps:** With hole / Without hole/**INCLUDED**.

**Application:** Architectural, Residential, Commercial.

Experience unrivaled performance with our precision-engineered, high density tape light, designed to meet the demands of even the most challenging applications.

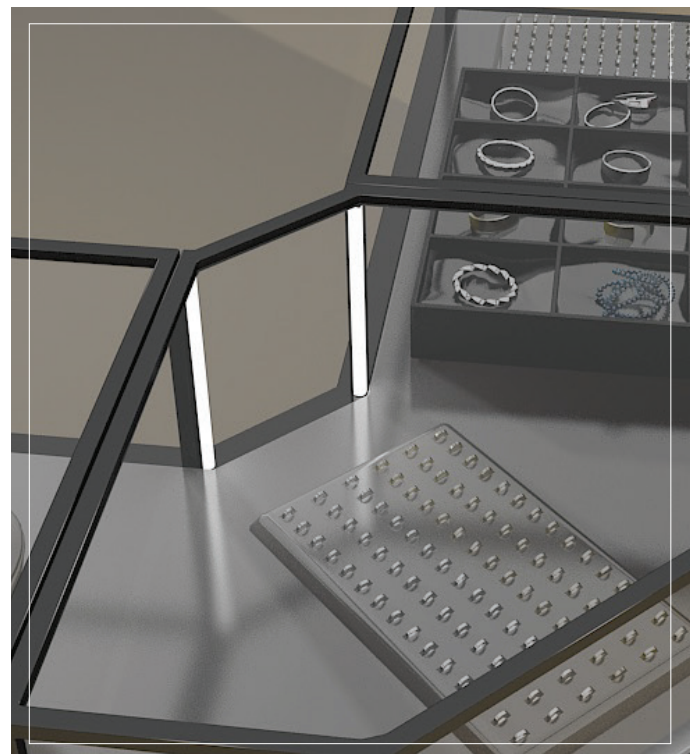
### LB Series 24V LED Light Strips

#### COMPATIBLE TAPE LIGHT

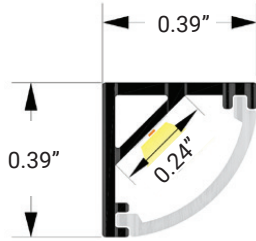
LB1000-MN



Power 2.9W/ft - Voltage 24V - CRI 90+ - LED Qty 37/ft - Lumens 280lm/ft



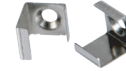
#### DIMENSIONS



#### MOUNTING



Profile with surface mounting clip

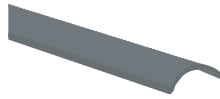


Surface Clip/**INCLUDED**

#### OPTICAL LENSES



**90D** - 90° Diffuser



**90B** - 90° Black

#### END CAPS INCLUDED



**WH**/With Hole



**WTH**/Without Hole

Surface clip and end caps included.

It Can be ordered in 3 different ways.

#### 1. Everything will be shipped separately

- Channel, cover, accessories and tape light will be cut and shipped to your desired length.



Channel, Cover, mounting clips, and end caps.



Tape Light if ordered.

Accessories if ordered.



#### 2. Pre-assembled and shipped separately as two units

- Channel, cover, accessories and tape light will be cut and shipped to your desired length.
- Cover, end caps and clips will be assembled to the channel.
- Wiring accessories will be attached to the tape light.



Channel will be cut and assembled to your desired length.



Wiring accessories attached to the tape light.

#### 3. Fully assembled and shipped as a single unit

- Channel, cover, accessories and tape light will be cut and shipped to your desired length.
- Wiring accessories will be attached to the tape light.
- Tape light will be installed into the channel and ready to use.



Refer to the next page for **COMPATIBLE** Tape Lights.

COMPATIBLE STRIP LIGHT



**MINI**  
**LED Strip Light**

Series-LB1000-MN  
Indoor Strip Light  
Width / 0.16"/4mm  
37 LEDs/FT

280lm/ft - 2.9W/ft

LB1000-MN					
SERIES	WATTAGE	LENGTH	CCT	VOLTAGE	WIRING ACCESSORIES
LB1000-MN	2.9W - 2.9W/ft	16F - 16ft Roll	27K - 2700K 30K - 3000K 35K - 3500K 40K - 4000K 50K - 5000K	24V - 24V	DCM - Wire to Wire Male Connector DCF - Wire to Wire Female Connector SL-2 - Soldered Lead JPSL-2 - Soldered Jumper

Mini-Profile Linear LED Lighting

1/4



Mini-Profile Linear LED Lighting

The Mini-Profile is designed with a compact size and a narrow luminous surface, which emits ultra-fine light beams. This offers a unique visual experience. It generates less heat, boasts high luminous efficiency, saves energy, and is environmentally friendly. Additionally, it contributes to protecting your vision.

