

## Lumi-PRO Extrusion SPECIALTY/RECESSED

**Lumi-PRO** Extrusion Recessed LED profiles are widely embraced in interior design applications, offering a practical and visually appealing lighting solution specifically designed for recessed installations. Perfect for creating a seamless and sophisticated lighting effect within walls, ceilings, or furniture, these extrusions bring a touch of elegance to any space.

The installation of Lumi-Pro recessed LED profiles is a straightforward process that demands minimal effort. Easily integrated into the desired recessed area using screws or clips, these extrusions eliminate the need for complex installation procedures.

Designed specifically for use with our LB series LED Light Strips, these extrusions provide a versatile and customizable lighting solution for distinct recessed spaces within residential, commercial, or hospitality settings.

### Example: LP-LGC-RWM-SPC-2-8-SI-FTD

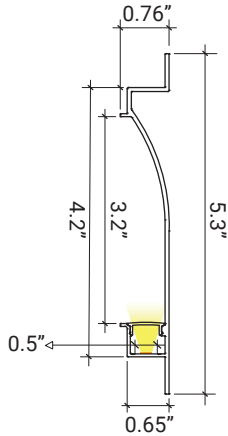
| SERIES           | EXT. LENGTH                                 | FINISH                                  | OPTICAL LENS  |
|------------------|---|---|---|
| LP-LGC-RWM-SPC-2 | 2 - 2ft<br>4 - 4ft<br>8 - 8ft<br>C - Custom | SI - Silver<br>BK - Black<br>WH - White | FTD - Flat Diffuser<br>FTO - Flat Opal <sup>1</sup><br>FTT - Flat Transparent <sup>1</sup><br>FTB - Flat Black <sup>1</sup> |

**1. MOQ (minimum order quantity)**  
required for these options, please consult factory.

### Compatible LB Series-24V LED Strip Light

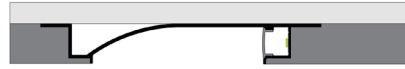
|   |  |  |  |
|---|--|--|--|
| <b>LB1000-MN</b>  |  | <b>LB3000-ST</b>   |  |
| Power 2.9W/ft - Voltage 24V - CRI 90+ - LED Qty 37/ft - Lumens 280lm/ft |  | Power 3W/ft - Voltage 24V - CRI 90+ - LED Qty 146/ft - Lumens 325lm/ft   |  |
| <b>LB1000-LR</b>  |  | <b>LB3000-ST-HE</b>  |  |
| Power 3.1W/ft - Voltage 24V - CRI 90+ - LED Qty 37/ft - Lumens 295lm/ft |  | Power 5.8W/ft - Voltage 24V - CRI 90+ - LED Qty 88/ft - Lumens 940lm/ft  |  |
| <b>LB1000-ST</b>  |  | <b>LB3000-FC-ST</b>  |  |
| Power 7.2W/ft - Voltage 24V - CRI 95+ - LED Qty 72/ft - Lumens 875lm/ft |  | Power 4.6W/ft - Voltage 24V - CRI 90+ - LED Qty 98/ft - Lumens 550lm/ft  |  |
| <b>LB1000-ST-HO</b>   |  | <b>LB3000-TWH</b>  |  |
| Power 11W/ft - Voltage 24V - CRI 95+ - LED Qty 72/ft - Lumens 1400lm/ft |  | Power 6.1W/ft - Voltage 24V - CRI 90+ - LED Qty 195/ft - Lumens 520lm/ft |  |
| <b>LB1000V-ST</b>   |  | <b>LB4000-RGB</b>  |  |
| Power 6.6W/ft - Voltage 24V - CRI98+ - LED Qty 73/ft - Lumens 890lm/ft  |  | Power 6.1W/ft - Voltage 24V - LED Qty 51/ft - Lumens 250lm/ft            |  |
| <b>LB1003-ST</b>  |  | <b>LB3000-RGBW</b>   |  |
| Power 3W/ft - Voltage 24V - CRI90+ - LED Qty 55/ft - Lumens 500lm/ft    |  | Power 6.1W/ft - Voltage 24V - LED Qty 256/ft - Lumens 232lm/ft           |  |
| <b>LB1000-ST-SC</b>   |  | <b>LB4000-RGBTWH</b>   |  |
| Power 7W/ft - Voltage 24V - CRI90+ - LED Qty 61/ft - Lumens 1082lm/ft   |  | Power 3.7W/ft - Voltage 24V - LED Qty 18/ft - Lumens 220lm/ft            |  |
| <b>LB1004-ST</b>  |  | <b>LB4000-RGBW</b>   |  |
| Power 5.9W/ft - Voltage 24V - CRI90+ - LED Qty 128/ft - Lumens 380lm/ft |  | Power 5.9W/ft - Voltage 24V - LED Qty 18/ft - Lumens 250lm/ft            |  |

## DIMENSIONS

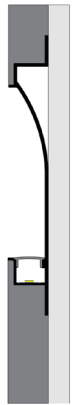


## MOUNTING

Ceiling Mount



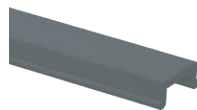
Wall Mount



## OPTICAL LENSES



FTD - Flat Diffuser **INCLUDED**



FTB - Flat Black **Optional**

## END CAPS/INCLUDED



2 End Caps With Holes **INCLUDED**



2 End Caps Without Holes **INCLUDED**

It Can be ordered in 3 different ways.

### 1. Everything will be shipped separately

#### RL

- Channel, cover, accessories and tape light will be cut and shipped to your desired length.



Accessories if ordered.



### 2. Pre-assembled and shipped separately as two units

#### PA

- Channel, cover, accessories and tape light will be cut and shipped to your desired length.
- Cover, end caps and clips will be assembled to the channel.
- Wiring accessories will be attached to the tape light.



### 3. Fully assembled and shipped as a single unit

#### FA

- Channel, cover, accessories and tape light will be cut and shipped to your desired length.
- Wiring accessories will be attached to the tape light.
- Tape light will be installed into the channel and ready to use.



### COMPATIBLE TAPE LIGHT Ordering Guide

Power feed, jumpers and connectors compatible with this channel

|                           | LB1000-MN | LB1000-LR | LB1000-ST | LB1000-ST-HO | LB1000V-ST | LB1003-ST | LB1000-ST-SC | LB1004-ST |
|---------------------------|-----------|-----------|-----------|--------------|------------|-----------|--------------|-----------|
| Soldered Lead (SL)        | ✓         | ✓         | ✓         | ✓            | ✓          | ✓         | ✓            | ✓         |
| Soldered Jumper (JPSL)    | ✓         | ✓         | ✓         | ✓            | ✓          | ✓         | ✓            | ✓         |
| Power Connector (TW)      | X         | X         | X         | X            | X          | X         | X            | X         |
| Tape Connector (TT)       | X         | X         | X         | X            | X          | X         | X            | X         |
| Tape Jumper (JP)          | X         | X         | X         | X            | X          | X         | X            | X         |
| Closed End (CE)           | ✓         | ✓         | ✓         | ✓            | ✓          | ✓         | ✓            | ✓         |
| DC Connector Male-(DCM)   | ✓         | ✓         | ✓         | ✓            | ✓          | ✓         | ✓            | ✓         |
| DC Connector Female-(DCF) | ✓         | ✓         | ✓         | ✓            | ✓          | ✓         | ✓            | ✓         |

Power feed, jumpers and connectors compatible with this channel

|                           | LB3000-ST | LB3000-ST-HE | LB3000-FC-ST | LB3000-TWH | LB4000-RGB | LB3000-RGBW | LB4000-RGBTWH | LB4000-RGBW |
|---------------------------|-----------|--------------|--------------|------------|------------|-------------|---------------|-------------|
| Soldered Lead (SL)        | ✓         | ✓            | ✓            | ✓          | ✓          | ✓           | ✓             | ✓           |
| Soldered Jumper (JPSL)    | ✓         | ✓            | ✓            | ✓          | ✓          | ✓           | ✓             | ✓           |
| Power Connector (TW)      | ✓         | ✓            | ✓            | ✓          | X          | X           | X             | X           |
| Tape Connector (TT)       | ✓         | ✓            | ✓            | ✓          | X          | X           | X             | X           |
| Tape Jumper (JP)          | ✓         | ✓            | ✓            | ✓          | X          | X           | X             | X           |
| Closed End (CE)           | ✓         | ✓            | ✓            | ✓          | ✓          | ✓           | ✓             | ✓           |
| DC Connector Male-(DCM)   | ✓         | ✓            | ✓            | ✓          | ✓          | ✓           | ✓             | ✓           |
| DC Connector Female-(DCF) | ✓         | ✓            | ✓            | ✓          | ✓          | ✓           | ✓             | ✓           |

SL= Soldered Lead JPSL= Soldered Jumper DCM=DC Connector Male soldered DCF=DC Connector Female soldered  
TW=Tape to Wire Power Feed TT=Tape to Tape Connector JP=Jumper Wire for Connectors CE=Closed end no connector

**X** Not compatible with this channel.

**NOTE:** The endcap hole should be enlarged to allow wiring to pass through, or the channel may be used without endcaps.



## COMPATIBLE TAPE LIGHT Ordering Guide

Power feed, jumpers and connectors compatible with this channel

|                           | LB1000-WDM |  |  |  |  |  |  |
|---------------------------|------------|--|--|--|--|--|--|
| Soldered Lead (SL)        | ✓          |  |  |  |  |  |  |
| Soldered Jumper (JPSL)    | ✓          |  |  |  |  |  |  |
| Power Connector (TW)      | X          |  |  |  |  |  |  |
| Tape Connector (TT)       | X          |  |  |  |  |  |  |
| Tape Jumper (JP)          | X          |  |  |  |  |  |  |
| Closed End (CE)           | ✓          |  |  |  |  |  |  |
| DC Connector Male-(DCM)   | ✓          |  |  |  |  |  |  |
| DC Connector Female-(DCF) | ✓          |  |  |  |  |  |  |

**SL**= Soldered Lead **JPSL**= Soldered Jumper **DCM**=DC Connector Male soldered **DCF**=DC Connector Female soldered  
**TW**=Tape to Wire Power Feed **TT**=Tape to Tape Connector **JP**=Jumper Wire for Connectors **CE**=Closed end no connector

**X** Not compatible with this channel.

**NOTE:** The endcap hole should be enlarged to allow wiring to pass through, or the channel may be used without endcaps.



# LP-LGC-RWM-SPC-2

## Lumi-PRO Extrusion Recessed/Wall or Ceiling

Refer to the tape light spec sheet for detailed information.

### MINI LED Strip Light



Series-LB1000-MN | 280lm/ft - 2.9W/ft  
Indoor Strip Light  
Width / 0.16"/4mm  
37 LEDs/FT

| SERIES  | WATTAGE        | LENGTH                        | CCT   | VOLTAGE   | WIRING ACCESSORIES   |
|---|----------------|-------------------------------|---|-----------|--|
| LB1000-MN   | 2.9W - 2.9W/ft | 16F - 16ft Roll<br>C - Custom | 27K - 2700K<br>30K - 3000K<br>35K - 3500K<br>40K - 4000K<br>50K - 5000K | 24V - 24V | DCM - Wire to Wire Male Connector<br>DCF - Wire to Wire Female Connector<br>SL-2 - Soldered Lead<br>JP10-2 - Soldered Jumper |
| SHIPPING OPTIONS  |                |                               |   |           |  |
| RL - Rolls 16ft<br>PA - Pre-Assembled<br>FA - Fully Assembled |                |                               |   |           |  |

### Static LED Strip Light



Series-LB1000-LR | 295lm/ft - 3.1W/ft  
Indoor Strip Light  
Width / 0.39"/10mm  
37 LEDs/FT

| SERIES  | WATTAGE        | LENGTH                        | CCT                                       | VOLTAGE   | WIRING ACCESSORIES   |
|---|----------------|-------------------------------|---|-----------|--|
| LB1000-LR   | 3.1W - 3.1W/ft | 52F - 52ft Roll<br>C - Custom | 30K - 3000K<br>40K - 4000K<br>50K - 5000K | 24V - 24V | TT10-2 - Tape to Tape Connector<br>TW10-2 - Tape to Wire Connector<br>JP10-2 - Tape to Tape Jumper<br>DCM - DC Male Connector<br>DCF - DC Female Connector<br>SL-2 - Soldered Lead<br>JP10-2 - Soldered Jumper |
| SHIPPING OPTIONS  |                |                               |   |           |  |
| RL - Rolls 52ft<br>PA - Pre-Assembled<br>FA - Fully Assembled |                |                               |   |           |  |

### Tight-Pitch LED Strip Light



Series-LB1000-ST | 235lm/ft - 1.9W/ft  
Indoor Strip Light  
Width / 0.39"/10mm  
72 LEDs/FT

| SERIES  | WATTAGE  | LENGTH                        | CCT  | VOLTAGE   | WIRING ACCESSORIES  |
|---|--|-------------------------------|--|-----------|---|
| LB1000-ST   | 1.9W - 1.9W/ft<br>4.6W - 4.6W/ft<br>7.2W - 7.2W/ft | 16F - 16ft Roll<br>C - Custom | 27K - 2700K<br>30K - 3000K<br>35K - 3500K<br>40K - 4000K<br>50K - 5000K<br>60K - 6000K | 24V - 24V | TT10-2T - Tape to Tape Connector<br>TW10-2T - Power Connector<br>JP10-2T - Tape to Tape Jumper<br>DCM - Wire to Wire Male Connector<br>DCF - Wire to Wire Female Connector<br>SL-2 - Soldered Lead<br>JP10-2T - Soldered Jumper |
| SHIPPING OPTIONS  |  |                               |  |           |   |
| RL - Rolls 16ft<br>PA - Pre-Assembled<br>FA - Fully Assembled |  |                               |  |           |   |

### High-Output LED Strip Light



Series-LB1000-ST-HO | 1120lm/ft - 9W/ft  
Indoor Strip Light  
Width / 0.39"/10mm  
72 LEDs/FT

| SERIES  | WATTAGE                    | LENGTH                        | CCT  | VOLTAGE   | WIRING ACCESSORIES  |
|---|----------------------------|-------------------------------|--|-----------|---|
| LB1000-ST-HO  | 9W - 9W/ft<br>11W - 11W/ft | 16F - 16ft Roll<br>C - Custom | 27K - 2700K<br>30K - 3000K<br>35K - 3500K<br>40K - 4000K<br>50K - 5000K<br>60K - 6000K | 24V - 24V | TT10-2T - Tape to Tape Connector<br>TW10-2T - Power Connector<br>JP10-2T - Tape to Tape Jumper<br>DCM - Wire to Wire Male Connector<br>DCF - Wire to Wire Female Connector<br>SL-2 - Soldered Lead<br>JP10-2T - Soldered Jumper |
| SHIPPING OPTIONS  |                            |                               |  |           |   |
| RL - Rolls 16ft<br>PA - Pre-Assembled<br>FA - Fully Assembled |                            |                               |  |           |   |

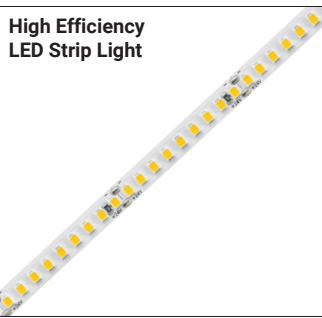
### CRI 98+ LED Strip Light



Series-LB1000V-ST | 890lm/ft - 6.6W/ft  
Indoor Strip Light  
Width / 0.39" / 10mm  
73 LEDs/FT

| SERIES  | WATTAGE        | LENGTH                        | CCT   | VOLTAGE   | WIRING ACCESSORIES  |
|---|----------------|-------------------------------|---|-----------|---|
| LB1000V-ST  | 6.6W - 6.6W/ft | 16F - 16ft Roll<br>C - Custom | 27K - 2700K<br>30K - 3000K<br>35K - 3500K<br>40K - 4000K<br>50K - 5000K | 24V - 24V | TW10-2T - Tape to Wire Connector<br>JP10-2T - Tape to Tape Jumper<br>DCM - DC Male Connector<br>DCF - DC Female Connector<br>SL-2 - Soldered Lead<br>JP10-2 - Soldered Jumper |
| SHIPPING OPTIONS  |                |                               |   |           |   |
| RL - Rolls 16ft<br>PA - Pre-Assembled<br>FA - Fully Assembled |                |                               |   |           |   |

### High Efficiency LED Strip Light



Series-LB1003-ST | 500lm/ft - 3W/ft  
Indoor Strip Light  
Width / 0.3" / 8mm  
55 LEDs/FT

| SERIES  | WATTAGE      | LENGTH                        | CCT  | VOLTAGE   | WIRING ACCESSORIES  |
|---|--------------|-------------------------------|--|-----------|---|
| LB1003-ST   | 3W - 2.9W/ft | 16F - 16ft Roll<br>C - Custom | 27K - 2700K<br>30K - 3000K<br>35K - 3500K<br>40K - 4000K<br>50K - 5000K<br>65K - 6500K | 24V - 24V | TW8-2 - Power Connector<br>JP8-2 - Tape to Tape Jumper<br>DCM - Wire to Wire Male Connector<br>DCF - Wire to Wire Female Connector<br>SL-2 - Soldered Lead<br>JP8-2 - Soldered Jumper |
| SHIPPING OPTIONS  |              |                               |  |           |   |
| RL - Rolls 16ft<br>PA - Pre-Assembled<br>FA - Fully Assembled |              |                               |  |           |   |

### Single Cut LED Strip Light



Series-LB1000-ST-SC | 1082lm/ft - 7W/ft  
Indoor Strip Light  
Width / 0.3" / 8mm  
61 LEDs/FT

| SERIES  | WATTAGE      | LENGTH                        | CCT  | VOLTAGE   | WIRING ACCESSORIES   |
|---|--------------|-------------------------------|--|-----------|--|
| LB1000-ST-SC  | 7W - 7.3W/ft | 13F - 13ft Roll<br>C - Custom | 27K - 2700K<br>30K - 3000K<br>35K - 3500K<br>40K - 4000K<br>50K - 5000K<br>65K - 6500K | 24V - 24V | TW8-2 - Tape to Wire Connector<br>JP8-2 - Tape to Tape Jumper<br>DCM - DC Male Connector<br>DCF - DC Female Connector<br>SL-2 - Soldered Lead<br>JP8-2 - Soldered Jumper |
| SHIPPING OPTIONS  |              |                               |  |           |  |
| RL - Rolls 16ft<br>PA - Pre-Assembled<br>FA - Fully Assembled |              |                               |  |           |  |

### MINI Neon Linear LED Strip Light



Series-LB1004-ST | 380lm/ft - 6W/ft  
Indoor Strip Light  
Width / 0.39" / 10mm  
128 LEDs/FT

| SERIES  | WATTAGE      | LENGTH                        | CCT  | VOLTAGE   | WIRING ACCESSORIES   |
|---|--------------|-------------------------------|--|-----------|--|
| LB1004-ST   | 6W - 5.9W/ft | 16F - 16ft Roll<br>C - Custom | 22K - 2200K<br>25K - 2500K<br>27K - 2700K<br>30K - 3000K<br>35K - 3500K<br>40K - 4000K<br>50K - 5000K<br>60K - 6000K | 24V - 24V | TW10-2MN - Power Connector<br>JP10-2MN - Tape to Tape Jumper<br>DCM - Wire to Wire Male Connector<br>DCF - Wire to Wire Female Connector<br>SL-2 - Soldered Lead<br>JP10-2 - Soldered Jumper |
| SHIPPING OPTIONS  |              |                               |  |           |  |
| RL - Rolls 16ft<br>PA - Pre-Assembled<br>FA - Fully Assembled |              |                               |  |           |  |





# LP-LGC-RWM-SPC-2

## Lumi-PRO Extrusion Recessed/Wall or Ceiling

Refer to the tape light spec sheet for detailed information.

### COB Static White LED Strip Light



Series-LB3000-ST | 325lm/ft - 3W/ft  
Indoor Strip Light  
Width / 0.3"/8mm  
146 LEDs/FT

| LB3000-ST   |            |                               |  |           |   |
|---|------------|-------------------------------|--|-----------|---|
| SERIES  | WATTAGE    | LENGTH                        | CCT  | VOLTAGE   | WIRING ACCESSORIES  |
| LB3000-ST   | 3W - 3W/ft | 16F - 16ft Roll<br>C - Custom | 27K - 2700K<br>30K - 3000K<br>35K - 3500K<br>40K - 4000K<br>50K - 5000K<br>60K - 6000K | 24V - 24V | TT8-2C - Tape to Tape Connector<br>TW8-2C - Power Connector<br>JP8-2C - Tape to Tape Jumper<br>DCM - Wire to Wire Male Connector<br>DCF - Wire to Wire Female Connector<br>SL-2 - Soldered Lead<br>JPSL-2 - Soldered Jumper |
|   |            |                               |  |           |   |
| SHIPPING OPTIONS  |            |                               |  |           |   |
| RL - Rolls 16ft<br>PA - Pre-Assembled<br>FA - Fully Assembled |            |                               |  |           |   |



Series-LB3000-ST-HE | 940lm/ft- 5.8W/ft  
Indoor Strip Light  
Width / 0.39" / 10mm  
88 LEDs/FT

| LB3000-ST-HE  |                |                               |   |           |  |
|---|----------------|-------------------------------|---|-----------|--|
| SERIES  | WATTAGE        | LENGTH                        | CCT   | VOLTAGE   | WIRING ACCESSORIES   |
| LB3000-ST-HE  | 5.8W - 5.8W/ft | 16F - 16ft Roll<br>C - Custom | 27K - 2700K<br>30K - 3000K<br>35K - 3500K<br>40K - 4000K<br>50K - 5000K | 24V - 24V | TT10-2BC - Tape to Tape Connector<br>TW10-2BC - Tape to Wire Connector<br>JP10-2BC - Tape to Tape Jumper<br>DCM - DC Male Connector<br>DCF - DC Female Connector<br>SL-2 - Soldered Lead<br>JPSL-2 - Soldered Jumper |
|   |                |                               |   |           |  |
| SHIPPING OPTIONS  |                |                               |   |           |  |
| RL - Rolls 16ft<br>PA - Pre-Assembled<br>FA - Fully Assembled |                |                               |   |           |  |

### COB Free-Cut LED Strip Light



Series-LB3000-FC-ST | 550lm/ft- 4.6W/ft  
Indoor Strip Light  
Width / 0.39" / 10mm  
98 LEDs/FT

| LB3000-FC-ST  |                |                               |   |           |  |
|---|----------------|-------------------------------|---|-----------|--|
| SERIES  | WATTAGE        | LENGTH                        | CCT   | VOLTAGE   | WIRING ACCESSORIES   |
| LB3000-FC-ST  | 4.6W - 4.6W/ft | 16F - 16ft Roll<br>C - Custom | 27K - 2700K<br>30K - 3000K<br>35K - 3500K<br>40K - 4000K<br>50K - 5000K | 24V - 24V | TT10-2BC - Tape to Tape Connector<br>TW10-2BC - Tape to Wire Connector<br>JP10-2BC - Tape to Tape Jumper<br>DCM - DC Male Connector<br>DCF - DC Female Connector<br>SL-2 - Soldered Lead<br>JPSL-2 - Soldered Jumper |
|   |                |                               |   |           |  |
| SHIPPING OPTIONS  |                |                               |   |           |  |
| RL - Rolls 16ft<br>PA - Pre-Assembled<br>FA - Fully Assembled |                |                               |   |           |  |

### COB Tunable White LED Strip Light



Series-LB3000-TWH | 520lm/ft - 6.1W/ft  
Indoor Strip Light  
Width / 0.39"/10mm  
195 LEDs/FT

| LB3000  |                |                               |                               |           |  |
|---|----------------|-------------------------------|-------------------------------|-----------|--|
| SERIES  | WATTAGE        | LENGTH                        | TECHNOLOGY                    | VOLTAGE   | WIRING ACCESSORIES   |
| LB3000  | 6.1W - 6.1W/ft | 16F - 16ft Roll<br>C - Custom | TWH-65K-27K - TWH/6500K-2700K | 24V - 24V | TW10-3C - Power Connector<br>JP10-3C - Tape to Tape Jumper<br>SL-3 - Soldered Lead<br>JPSL-3 - Soldered Jumper |
|   |                |                               |                               |           |  |
| SHIPPING OPTIONS  |                |                               |                               |           |  |
| RL - Rolls 16ft<br>PA - Pre-Assembled<br>FA - Fully Assembled |                |                               |                               |           |  |

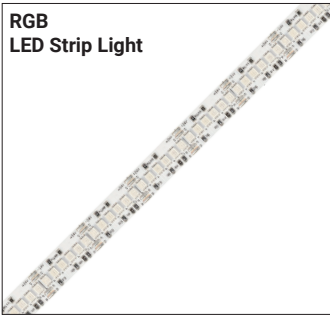


# LP-LGC-RWM-SPC-2

## Lumi-PRO Extrusion Recessed/Wall or Ceiling

Refer to the tape light spec sheet for detailed information.

### RGB LED Strip Light



Series-LB4000-RGB | 250lm/ft - 6.1W/ft  
Indoor Strip Light  
Width / 0.39" / 10mm  
51 LEDs/FT

| LB4000  |                |                               |           |           |  |
|---|----------------|-------------------------------|-----------|-----------|--|
| SERIES  | WATTAGE        | LENGTH                        | COLOR     | VOLTAGE   | WIRING ACCESSORIES   |
| LB4000  | 6.1W - 6.1W/ft | 16F - 16ft Roll<br>C - Custom | RGB - RGB | 24V - 24V | <b>TT10-4</b> - Tape to Tape Connector<br><b>TW10-4</b> - Power Connector<br><b>JP10-4</b> - Tape to Tape Jumper<br><b>SL-4</b> - Soldered Lead<br><b>JPSL-4</b> - Soldered Jumper |
| <div> <div></div> <div>SHIPPING OPTIONS</div> </div>          |                |                               |           |           |  |
| RL - Rolls 16ft<br>PA - Pre-Assembled<br>FA - Fully Assembled |                |                               |           |           |  |

### COB Linear RGBW LED Strip Light



Series-LB3000-RGBW | 255lm/ft - 6.1W/ft  
Indoor Strip Light  
Width / 0.47"/12mm  
256 LEDs/FT

| LB3000  |                |                               |             |           |  |
|---|----------------|-------------------------------|-------------|-----------|--|
| SERIES  | WATTAGE        | LENGTH                        | COLOR       | VOLTAGE   | WIRING ACCESSORIES   |
| LB3000  | 6.1W - 6.1W/ft | 16F - 16ft Roll<br>C - Custom | RGBW - RGBW | 24V - 24V | <b>TW12-5C</b> - Power Connector<br><b>JP12-5C</b> - Tape to Tape Jumper<br><b>SL-5</b> - Soldered Lead<br><b>JPSL-5</b> - Soldered Jumper |
| <div> <div></div> <div>SHIPPING OPTIONS</div> </div>          |                |                               |             |           |  |
| RL - Rolls 16ft<br>PA - Pre-Assembled<br>FA - Fully Assembled |                |                               |             |           |  |

### RGB & Tunable White LED Strip Light



Series-LB4000-RGBTWH | 220lm/ft - 3.7W/ft  
Indoor Strip Light  
Width / 0.47"/12mm  
18 LEDs/FT

| LB4000  |                |                               |                  |           |  |
|---|----------------|-------------------------------|------------------|-----------|--|
| SERIES  | WATTAGE        | LENGTH                        | COLOR            | VOLTAGE   | WIRING ACCESSORIES   |
| LB4000  | 3.7W - 3.7W/ft | 16F - 16ft Roll<br>C - Custom | RGB/TWH- RGB/TWH | 24V - 24V | <b>TW12-6</b> - Power Connector<br><b>JP12-6</b> - Tape to Tape Jumper<br><b>SL-6</b> - Soldered Lead<br><b>JPSL-6</b> - Soldered Jumper |
| <div> <div></div> <div>SHIPPING OPTIONS</div> </div>          |                |                               |                  |           |  |
| RL - Rolls 16ft<br>PA - Pre-Assembled<br>FA - Fully Assembled |                |                               |                  |           |  |

### RGBW LED Strip Light



Series-LB4000-RGBW | 250lm/ft - 5.9W/ft  
Indoor Strip Light  
Width / 0.47"/12mm  
18 LEDs/FT

| LB4000  |                |                               |             |           |  |
|---|----------------|-------------------------------|-------------|-----------|--|
| SERIES  | WATTAGE        | LENGTH                        | COLOR       | VOLTAGE   | WIRING ACCESSORIES   |
| LB4000  | 5.9W - 5.9W/ft | 16F - 16ft Roll<br>C - Custom | RGBW - RGBW | 24V - 24V | <b>TW12-5</b> - Power Connector<br><b>JP12-5</b> - Tape to Tape Jumper<br><b>SL-5</b> - Soldered Lead<br><b>JPSL-5</b> - Soldered Jumper |
| <div> <div></div> <div>SHIPPING OPTIONS</div> </div>          |                |                               |             |           |  |
| RL - Rolls 16ft<br>PA - Pre-Assembled<br>FA - Fully Assembled |                |                               |             |           |  |



**Warm Dim  
LED Strip Light**



|  |                    |
|--|--------------------|
| Series-LB1000-WDM<br>Indoor Tape Light<br>Width / 0.47"/12mm<br>51 LEDs/FT | 515lm/ft - 4.4W/ft |
|--|--------------------|

|  |                |                               |                           |                |  |
|--|----------------|-------------------------------|---------------------------|----------------|--|
| LB1000   |                |                               |                           |                |  |
| <b>SERIES</b>  | <b>WATTAGE</b> | <b>LENGTH</b>                 | <b>TECHNOLOGY</b>         | <b>VOLTAGE</b> | <b>WIRING ACCESSORIES</b>  |
| LB1000   | 4.4W - 4.4W/ft | 16F - 16ft Roll<br>C - Custom | WDM-30K-18K - WDM/30K-18K | 24V - 24V      | <b>TT12-2</b> - Tape to Tape Connector<br><b>TW12-2</b> - Power Connector<br><b>JP12-2</b> - Tape to Tape Jumper<br><b>DCM</b> - Male Connector<br><b>DCF</b> - Female Connector<br><b>SL-2</b> - Soldered Lead<br><b>JPSL-2</b> - Soldered Jumper |
| <div></div> <div><b>SHIPPING OPTIONS</b></div> <div> <b>RL</b> - Rolls 16ft<br/> <b>PA</b> - Pre-Assembled<br/> <b>FA</b> - Fully Assembled         </div> |                |                               |                           |                |  |