

Lumi-PRO Extrusion SURFACE

Lumi-Pro Extrusion Surface LED profiles are widely embraced in interior design applications, offering a practical and visually appealing lighting solution. Perfect for creating a seamless and **sophisticated lighting effect within walls, ceilings, or furniture**, these extrusions bring a touch of elegance to any space.

The installation of **Lumi-Pro Surface LED Extrusions** is a straightforward process that demands minimal effort. Easily integrated into the desired area using **screws or clips**, these extrusions **eliminate the need for complex installation procedures**.

Designed specifically for use with our **LB series LED Light Strips**, these extrusions provide a versatile and customizable lighting solution for distinct spaces within **residential, commercial, or hospitality** settings.

Example: LP-LGC-CM-050-8-SI-FTD

SERIES	EXT. LENGTH	FINISH	OPTICAL LENS
LP-LGC-CM-050	2 - 2ft 4 - 4ft 8 - 8ft C - Custom	SI - Silver BK - Black ¹ WH - White ¹	FTD - Flat Diffuser FTO - Flat Opal ¹ FTT - Flat Transparent ¹ FTB - Flat Black ¹

¹ MOQ (minimum order quantity) required for these options, please consult factory.

Series LP-LGC-CM-050

Tape light width 0.35" recommended.

Extrusion Length: 2ft / 4ft / 8ft

Finish: Silver, Black, White.

Mounting: Surface clip/**INCLUDED**.

End caps: With hole / Without hole/**INCLUDED**.

Application: Architectural, Residential, Commercial.

Experience unrivaled performance with our precision-engineered, high density tape light, designed to meet the demands of even the most challenging applications.

LB Series 24V LED Strip Light

COMPATIBLE STRIP LIGHT

LB1000-MN

Power 2.9W/ft - Voltage 24V - CRI 90+ - LED Qty 37/ft - Lumens 280lm/ft

LB1003-ST

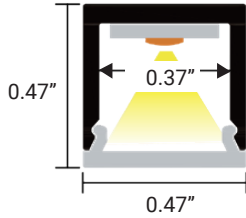
Power 2.9W/ft - Voltage 24V - CRI90+ - LED Qty 55/ft - Lumens 500lm/ft

LB3000-ST

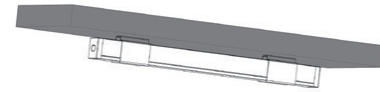
Power 3.0W/ft - Voltage 24V - CRI 90+ - LED Qty 146/ft - Lumens 325lm/ft



DIMENSIONS



MOUNTING



Profile with surface mounting clip

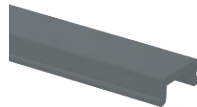


Surface Clip/**INCLUDED**

OPTICAL LENSES



FTD - Flat Diffuser



FTB - Flat Black

END CAPS/INCLUDED



WH/With Hole



WTH/Without Hole

Surface clip and end caps included.

It Can be ordered in 3 different ways.

1. Everything will be shipped separately

- Channel, cover, accessories and tape light will be cut and shipped to your desired length.



Channel, Cover, mounting clips, and end caps.



Tape Light if ordered.

Accessories if ordered.



2. Pre-assembled and shipped separately as two units

- Channel, cover, accessories and tape light will be cut and shipped to your desired length.
- Cover, end caps and clips will be assembled to the channel.
- Wiring accessories will be attached to the tape light.



Channel will be cut and assembled to your desired length.



Wiring accessories attached to the tape light.

3. Fully assembled and shipped as a single unit

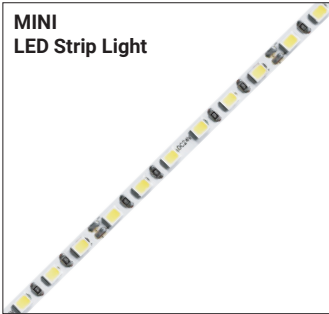
- Channel, cover, accessories and tape light will be cut and shipped to your desired length.
- Wiring accessories will be attached to the tape light.
- Tape light will be installed into the channel and ready to use.



Refer to the next page for **COMPATIBLE** Tape Lights.



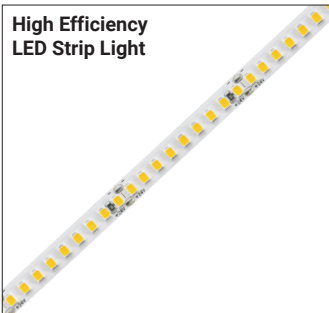
MINI LED Strip Light



Series-LB1000-MN
Indoor Strip Light
Width / 0.16"/4mm
37 LEDs/FT

LB1000-MN					
SERIES	WATTAGE	LENGTH	CCT	VOLTAGE	WIRING ACCESSORIES
LB1000-MN	2.9W - 2.9W/ft	16F - 16ft Roll	27K - 2700K 30K - 3000K 35K - 3500K 40K - 4000K 50K - 5000K	24V - 24V	DCM - Wire to Wire Male Connector DCF - Wire to Wire Female Connector SL-2 - Soldered Lead JPSL-2 - Soldered Jumper

High Efficiency LED Strip Light



Series-LB1003-ST
Indoor Strip Light
Width / 0.3"/8mm
55 LEDs/FT

LB1003-ST					
SERIES	WATTAGE	LENGTH	CCT	VOLTAGE	WIRING ACCESSORIES
LB1003-ST	3W - 2.9W/ft	16F - 16ft Roll	27K - 2700K 30K - 3000K 35K - 3500K 40K - 4000K 50K - 5000K 65K - 6500K	24V - 24V	TW8-2 - Power Connector JP8-2 - Tape to Tape Jumper DCM - Wire to Wire Male Connector DCF - Wire to Wire Female Connector SL-2 - Soldered Lead JPSL-2 - Soldered Jumper
CHANNEL	TAPE LIGHT	WIRING ACCESSORIES			
ASB - Assembled SEP - Separated	INS - Installed SEP - Separated	INS - Installed SEP - Separated			

COB Static White LED Strip Light



Series-LB3000-ST
Indoor Strip Light
Width / 0.3"/8mm
146 LEDs/FT

LB3000-ST					
SERIES	WATTAGE	LENGTH	CCT	VOLTAGE	WIRING ACCESSORIES
LB3000-ST	3W - 3W/ft	16F - 16ft Roll	27K - 2700K 30K - 3000K 35K - 3500K 40K - 4000K 50K - 5000K 60K - 6000K	24V - 24V	TW8-2C - Power Connector TT8-2C - Tape to Tape Connector JP8-2C - Tape to Tape Jumper DCM - Wire to Wire Male Connector DCF - Wire to Wire Female Connector SL-2 - Soldered Lead JPSL-2 - Soldered Jumper
			</		