

**Lumi-PRO Extrusion SPECIALTY/CLOSET**

The **Lumi-PRO** Closet Aluminum Channel is the ideal solution for combining ambient lighting with functional design in closet spaces. Specifically engineered to deliver direct illumination, it creates a seamless, soft wash of light that highlights architectural features while maintaining a clean, modern aesthetic.

Built to support the weight of hanging garments, this durable extrusion functions as both a lighting fixture and a practical storage solution.

Compatible with our LB series LED light strips, it offers flexibility in providing tailored lighting configurations that adapt to various closet layouts. Perfect for both residential and commercial applications, the Lumi-PRO Closet Aluminum Channel delivers energy-efficient, indirect lighting, enhancing the visual appeal of any closet or storage area.

**Example: LP-LGC-CLS-SPC-2-8-SI-FTD**

SERIES	EXT. LENGTH	FINISH	OPTICAL LENS
LP-LGC-CLS-SPC-2	2 - 2ft 4 - 4ft 8 - 8ft C - Custom	SI - Silver BK - Black WH - White	FTD - Flat Diffuser FTO - Flat Opal <sup>1</sup> FTT - Flat Transparent <sup>1</sup> FTB - Flat Black <sup>1</sup>

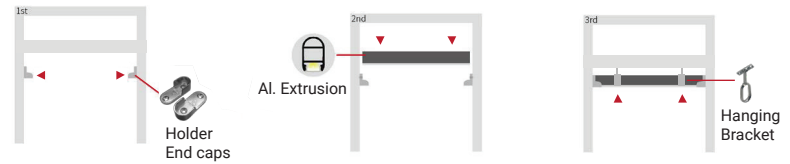
<sup>1</sup>.MOQ (minimum order quantity) required for these options, please consult factory.

**Compatible LB Series-24V LED Strip Light**

<b>LB1000-MN</b>		Power 2.9W/ft - Voltage 24V - CRI 90+ - LED Qty 37/ft - Lumens 280lm/ft
<b>LB1000-ST</b>		Power 11W/ft - Voltage 24V - CRI 95+ - LED Qty 72/ft - Lumens 875lm/ft
<b>LB1000-ST-HO</b>		Power 11W/ft - Voltage 24V - CRI 95+ - LED Qty 72/ft - Lumens 1400lm/ft
<b>LB1000V-ST</b>		Power 6.6W/ft - Voltage 24V - CRI98+ - LED Qty 73/ft - Lumens 890lm/ft
<b>LB1003-ST</b>		Power 2.9W/ft - Voltage 24V - CRI90+ - LED Qty 55/ft - Lumens 500lm/ft
<b>LB1000-ST-SC</b>		Power 7W/ft - Voltage 24V - CRI90+ - LED Qty 61/ft - Lumens 1082lm/ft

<b>LB3000-ST</b>		Power 3.0W/ft - Voltage 24V - CRI 90+ - LED Qty 146/ft - Lumens 325lm/ft
<b>LB3000-ST-HE</b>		Power 5.8W/ft - Voltage 24V - CRI 90+ - LED Qty 88/ft - Lumens 940lm/ft
<b>LB3000-FC-ST</b>		Power 4.6W/ft - Voltage 24V - CRI 90+ - LED Qty 98/ft - Lumens 550lm/ft
<b>LB3000-TWH</b>		Power 6.1W/ft - Voltage 24V - CRI 90+ - LED Qty 195/ft - Lumens 520lm/ft
<b>LB4000-RGB</b>		Power 6.1W/ft - Voltage 24V - LED Qty 51/ft - Lumens 250lm/ft

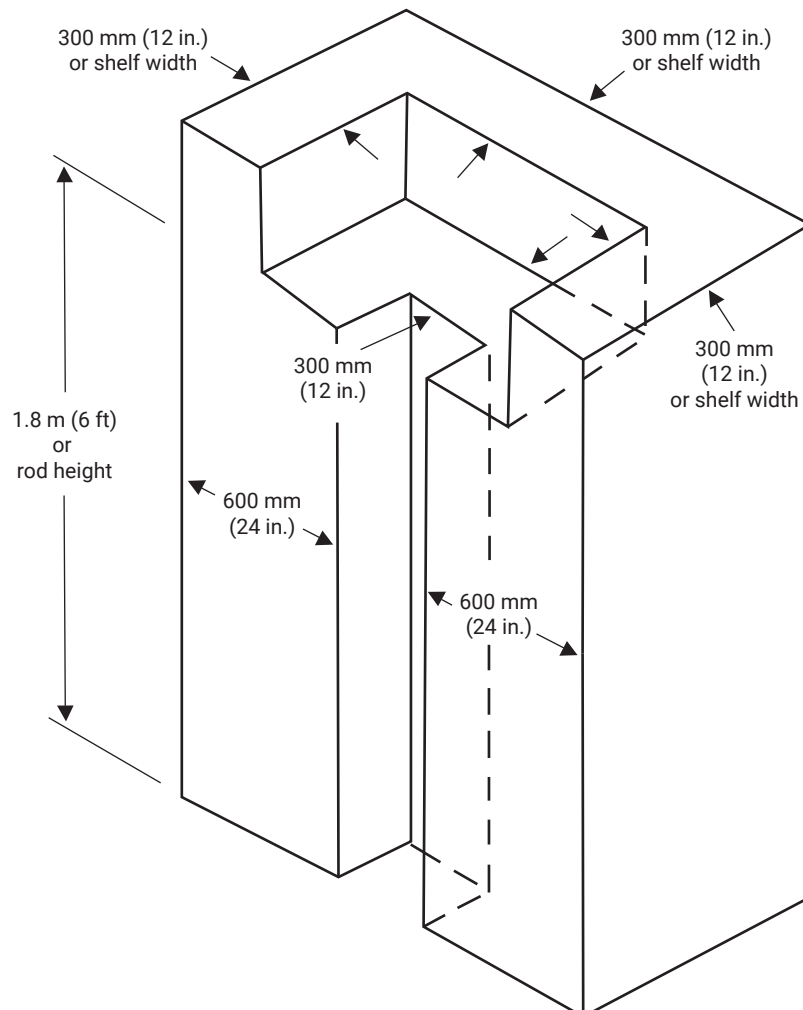
## MOUNTING

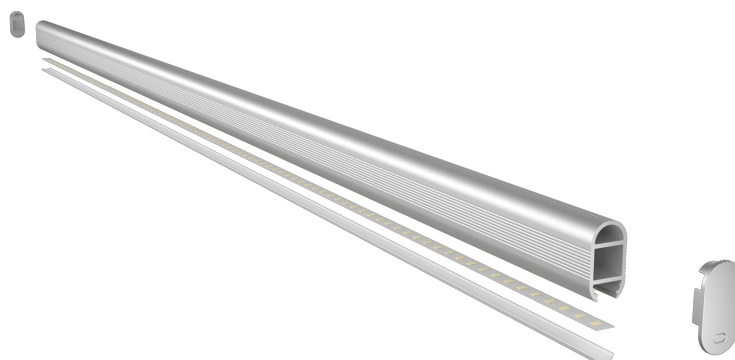


First, mount the holder end caps to both ends of the closet. Next, position the aluminum extrusion and verify that its length is correct and that it fits properly. Once you've confirmed the extrusion fits perfectly, install the hanging brackets every 2 feet along the extrusion (recommended). Secure the brackets by screwing them into the top surface of the closet to ensure everything is firmly in place.

## Luminaires in clothes closets

The clothes closet storage space shall be the volume bounded by the sides and back closet walls and planes extending from the closet floor vertically to a height of 1.8m (6 ft) or to the highest clothes-hanging rod and parallel to the walls at a horizontal distance of 600 mm (24 in.) from the sides and back of the closet walls, respectively. The volume extends vertically to the closet ceiling parallel to the walls at a horizontal distance of 300 mm (12 in.) or the width of the shelf, whichever is greater. For a closet that permits access to both sides of the hanging rod, the clothes closet storage space includes the volume below the highest rod extending 300 mm (12 in.) on either side of the rod on a plane horizontal to the floor extending the entire length of the rod. See Figure.





**OPTICAL LENS**

**ACCESSORIES**



**FTD - Flat Diffuser INCLUDED**



**2 Holder End Caps INCLUDED**



**4 Hanging Brackets INCLUDED**



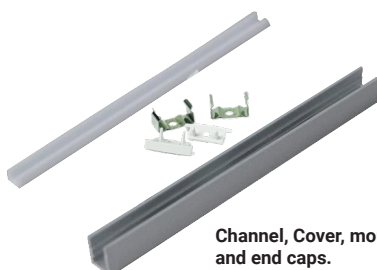
**2 End Caps Without Holes and 2 With Holes INCLUDED**

It can be ordered in 3 different ways.

**1. Everything will be shipped separately**

**RL**

- Channel, cover, accessories and tape light will be cut and shipped to your desired length.



Channel, Cover, mounting clips, and end caps.



Tape Light if ordered.

Accessories if ordered.



**2. Pre-assembled and shipped separately as two units**

**PA**

- Channel, cover, accessories and tape light will be cut and shipped to your desired length.
- Cover, end caps and clips will be assembled to the channel.
- Wiring accessories will be attached to the tape light.



Channel will be cut and assembled to your desired length.



Wiring accessories attached to the tape light.

**3. Fully assembled and shipped as a single unit**

**FA**

- Channel, cover, accessories and tape light will be cut and shipped to your desired length.
- Wiring accessories will be attached to the tape light.
- Tape light will be installed into the channel and ready to use.



Refer to the next page for COMPATIBLE Tape Lights.



## COMPATIBLE TAPE LIGHT Ordering Guide

Power feed, jumpers and connectors compatible with this channel

	LB1000-MN	LB1000-LR	LB1000-ST	LB1000-ST-HO	LB1000V-ST	LB1003-ST	LB1000-ST-SC	LB1004-ST
Soldered Lead (SL)	✓	X	✓	✓	✓	✓	✓	X
Soldered Jumper (JPSL)	✓	X	✓	✓	✓	✓	✓	X
Power Connector (TW)	X	X	X	X	X	X	X	X
Tape Connector (TT)	X	X	X	X	X	X	X	X
Tape Jumper (JP)	X	X	X	X	X	X	X	X
Closed End (CE)	✓	X	✓	✓	✓	✓	✓	X
DC Connector Male-(DCM)	✓	X	✓	✓	✓	✓	✓	X
DC Connector Female-(DCF)	✓	X	✓	✓	✓	✓	✓	X

Power feed, jumpers and connectors compatible with this channel

	LB3000-ST	LB3000-ST-HE	LB3000-FC-ST	LB3000-TWH	LB4000-RGB	LB3000-RGBW	LB4000-RGBTWH	LB4000-RGBW
Soldered Lead (SL)	✓	✓	✓	✓	✓	X	X	X
Soldered Jumper (JPSL)	✓	✓	✓	✓	✓	X	X	X
Power Connector (TW)	X	X	X	X	X	X	X	X
Tape Connector (TT)	X	X	X	X	X	X	X	X
Tape Jumper (JP)	X	X	X	X	X	X	X	X
Closed End (CE)	✓	✓	✓	✓	✓	X	X	X
DC Connector Male-(DCM)	✓	✓	✓	✓	✓	X	X	X
DC Connector Female-(DCF)	✓	✓	✓	✓	✓	X	X	X

**SL**= Soldered Lead **JPSL**= Soldered Jumper **DCM**=DC Connector Male soldered **DCF**=DC Connector Female soldered  
**TW**=Tape to Wire Power Feed **TT**=Tape to Tape Connector **JP**=Jumper Wire for Connectors **CE**=Closed end no connector

X

Not compatible with this channel.

**NOTE:** The endcap hole should be enlarged to allow wiring to pass through, or the channel may be used without endcaps.



**MINI  
LED Strip Light**



**Series-LB1000-MN** | **280lm/ft - 2.9W/ft**  
**Indoor Strip Light**  
**Width / 0.16"/4mm**  
**37 LEDs/FT**

SERIES	WATTAGE	LENGTH	CCT	VOLTAGE	WIRING ACCESSORIES
LB1000-MN	2.9W - 2.9W/ft	16F - 16ft Roll C - Custom	27K - 2700K 30K - 3000K 35K - 3500K 40K - 4000K 50K - 5000K	24V - 24V	DCM - Wire to Wire Male Connector DCF - Wire to Wire Female Connector SL-2 - Soldered Lead JPSL-2 - Soldered Jumper
SHIPPING OPTIONS					
RL - Rolls 16ft PA - Pre-Assembled FA - Fully Assembled					

**Tight-Pitch  
LED Strip Light**



**Series-LB1000-ST** | **235lm/ft - 1.9W/ft**  
**Indoor Strip Light** | **565lm/ft - 4.6W/ft**  
**Width / 0.39"/10mm** | **875lm/ft - 7.2W/ft**  
**72 LEDs/FT**

SERIES	WATTAGE	LENGTH	CCT	VOLTAGE	WIRING ACCESSORIES
LB1000-ST	1.9W - 1.9W/ft 4.6W - 4.6W/ft 7.2W - 7.2W/ft	16F - 16ft Roll C - Custom	27K - 2700K 30K - 3000K 35K - 3500K 40K - 4000K 50K - 5000K 60K - 6000K	24V - 24V	TT10-2T - Tape to Tape Connector TW10-2T - Power Connector JP10-2T - Tape to Tape Jumper DCM - Wire to Wire Male Connector DCF - Wire to Wire Female Connector SL-2 - Soldered Lead JPSL-2 - Soldered Jumper
SHIPPING OPTIONS					
RL - Rolls 16ft PA - Pre-Assembled FA - Fully Assembled					

**High-Output  
LED Strip Light**



**Series-LB1000-ST-HO** | **1120lm/ft - 9W/ft**  
**Indoor Strip Light** | **1400lm/ft - 11W/ft**  
**Width / 0.39"/10mm**  
**72 LEDs/FT**

SERIES	WATTAGE	LENGTH	CCT	VOLTAGE	WIRING ACCESSORIES
LB1000-ST-HO	9W - 9W/ft 11W - 11W/ft	16F - 16ft Roll C - Custom	27K - 2700K 30K - 3000K 35K - 3500K 40K - 4000K 50K - 5000K 60K - 6000K	24V - 24V	TT10-2T - Tape to Tape Connector TW10-2T - Power Connector JP10-2T - Tape to Tape Jumper DCM - Wire to Wire Male Connector DCF - Wire to Wire Female Connector SL-2 - Soldered Lead JPSL-2 - Soldered Jumper
SHIPPING OPTIONS					
RL - Rolls 16ft PA - Pre-Assembled FA - Fully Assembled					

**CRI 98+  
LED Strip Light**

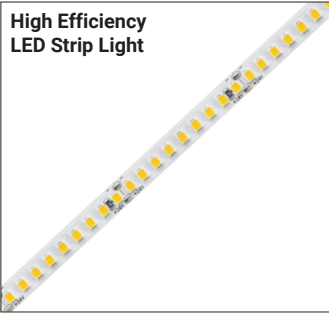


**Series-LB1000V-ST** | **890lm/ft - 6.6W/ft**  
**Indoor Strip Light**  
**Width / 0.39" / 10mm**  
**73 LEDs/FT**

SERIES	WATTAGE	LENGTH	CCT	VOLTAGE	WIRING ACCESSORIES
LB1000V-ST	6.6W - 6.6W/ft	16F - 16ft Roll C - Custom	27K - 2700K 30K - 3000K 35K - 3500K 40K - 4000K 50K - 5000K	24V - 24V	TW10-2T - Tape to Wire Connector JP10-2T - Tape to Tape Jumper DCM - DC Male Connector DCF - DC Female Connector SL-2 - Soldered Lead JPSL-2 - Soldered Jumper
SHIPPING OPTIONS					
RL - Rolls 16ft PA - Pre-Assembled FA - Fully Assembled					



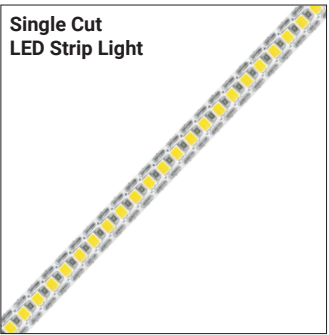
**High Efficiency  
LED Strip Light**



Series-LB1003-ST | 500lm/ft - 2.9W/ft  
Indoor Strip Light  
Width / 0.3" / 8mm  
55 LEDs/FT

SERIES	WATTAGE	LENGTH	CCT	VOLTAGE	WIRING ACCESSORIES
LB1003-ST	3W - 2.9W/ft	16F - 16ft Roll C - Custom	27K - 2700K 30K - 3000K 35K - 3500K 40K - 4000K 50K - 5000K 65K - 6500K	24V - 24V	<b>TW8-2</b> - Power Connector <b>JP8-2</b> - Tape to Tape Jumper <b>DCM</b> - Wire to Wire Male Connector <b>DCF</b> - Wire to Wire Female Connector <b>SL-2</b> - Soldered Lead <b>JPSL-2</b> - Soldered Jumper
<b>SHIPPING OPTIONS</b> RL - Rolls 16ft PA - Pre-Assembled FA - Fully Assembled					

**Single Cut  
LED Strip Light**



Series-LB1000-ST-SC | 1082lm/ft-7.3W/ft  
Indoor Strip Light  
Width / 0.3" / 8mm  
61 LEDs/FT

SERIES	WATTAGE	LENGTH	CCT	VOLTAGE	WIRING ACCESSORIES
LB1000-ST-SC	7W - 7.3W/ft	13F - 13ft Roll C - Custom	27K - 2700K 30K - 3000K 35K - 3500K 40K - 4000K 50K - 5000K 65K - 6500K	24V - 24V	<b>TW8-2</b> - Tape to Wire Connector <b>JP8-2</b> - Tape to Tape Jumper <b>DCM</b> - DC Male Connector <b>DCF</b> - DC Female Connector <b>SL-2</b> - Soldered Lead <b>JPSL-2</b> - Soldered Jumper
<b>SHIPPING OPTIONS</b> RL - Rolls 16ft PA - Pre-Assembled FA - Fully Assembled					

**COB Static White  
LED Strip Light**



Series-LB3000-ST | 325lm/ft - 3W/ft  
Indoor Strip Light  
Width / 0.3" / 8mm  
146 LEDs/FT

SERIES	WATTAGE	LENGTH	CCT	VOLTAGE	WIRING ACCESSORIES
LB3000-ST	3W - 3W/ft	16F - 16ft Roll C - Custom	27K - 2700K 30K - 3000K 35K - 3500K 40K - 4000K 50K - 5000K 60K - 6000K	24V - 24V	<b>TT8-2C</b> - Tape to Tape Connector <b>TW8-2C</b> - Power Connector <b>JP8-2C</b> - Tape to Tape Jumper <b>DCM</b> - Wire to Wire Male Connector <b>DCF</b> - Wire to Wire Female Connector <b>SL-2</b> - Soldered Lead <b>JPSL-2</b> - Soldered Jumper
<b>SHIPPING OPTIONS</b> RL - Rolls 16ft PA - Pre-Assembled FA - Fully Assembled					



Series-LB3000-ST-HE | 940lm/ft-5.8W/ft  
Indoor Strip Light  
Width / 0.39" / 10mm  
88 LEDs/FT

SERIES	WATTAGE	LENGTH	CCT	VOLTAGE	WIRING ACCESSORIES
LB3000-ST-HE	5.8W - 5.8W/ft	16F - 16ft Roll C - Custom	27K - 2700K 30K - 3000K 35K - 3500K 40K - 4000K 50K - 5000K	24V - 24V	<b>TT10-2BC</b> - Tape to Tape Connector <b>TW10-2BC</b> - Tape to Wire Connector <b>JP10-2BC</b> - Tape to Tape Jumper <b>DCM</b> - DC Male Connector <b>DCF</b> - DC Female Connector <b>SL-2</b> - Soldered Lead <b>JPSL-2</b> - Soldered Jumper
<b>SHIPPING OPTIONS</b> RL - Rolls 16ft PA - Pre-Assembled FA - Fully Assembled					





**COB Free-Cut  
LED Strip Light**



**Series-LB3000-FC-ST** | 550lm/ft - 4.6W/ft  
Indoor Strip Light  
Width / 0.39" / 10mm  
98 LEDs/FT

SERIES	WATTAGE	LENGTH	CCT	VOLTAGE	WIRING ACCESSORIES
LB3000-FC-ST	4.6W - 4.6W/ft	16F - 16ft Roll C - Custom	27K - 2700K 30K - 3000K 35K - 3500K 40K - 4000K 50K - 5000K	24V - 24V	TT10-2BC - Tape to Tape Connector TW10-2BC - Tape to Wire Connector JP10-2BC - Tape to Tape Jumper DCM - DC Male Connector DCF - DC Female Connector SL-2 - Soldered Lead JP10-2 - Soldered Jumper

**SHIPPING OPTIONS**

RL - Rolls 16ft  
PA - Pre-Assembled  
FA - Fully Assembled

**COB Tunable White  
LED Strip Light**



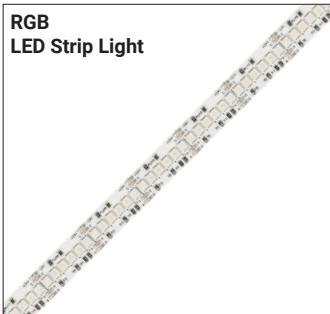
**Series-LB3000-TWH** | 520lm/ft - 6.1W/ft  
Indoor Strip Light  
Width / 0.39"/10mm  
195 LEDs/FT

SERIES	WATTAGE	LENGTH	TECHNOLOGY	VOLTAGE	WIRING ACCESSORIES
LB3000	6.1W - 6.1W/ft	16F - 16ft Roll C - Custom	TWH-65K-27K - TWH/6500K-2700K	24V - 24V	TW10-3C - Power Connector JP10-3C - Tape to Tape Jumper SL-3 - Soldered Lead JP10-3 - Soldered Jumper

**SHIPPING OPTIONS**

RL - Rolls 16ft  
PA - Pre-Assembled  
FA - Fully Assembled

**RGB  
LED Strip Light**



**Series-LB4000-RGB** | 250lm/ft - 6.1W/ft  
Indoor Strip Light  
Width / 0.39" / 10mm  
51 LEDs/FT

SERIES	WATTAGE	LENGTH	COLOR	VOLTAGE	WIRING ACCESSORIES
LB4000	6.1W - 6.1W/ft	16F - 16ft Roll C - Custom	RGB - RGB	24V - 24V	TT10-4 - Tape to Tape Connector TW10-4 - Power Connector JP10-4 - Tape to Tape Jumper SL-4 - Soldered Lead JP10-4 - Soldered Jumper

**SHIPPING OPTIONS**

RL - Rolls 16ft  
PA - Pre-Assembled  
FA - Fully Assembled