



LUMENS	4000, 6000, 7000	SIZES	23" X 20", 35" X 30", 47" X 40"
CCT & TECHNOLOGIES	3000K / 3500K / 4000K	MOUNTING	Suspended
CRI	90+ Standard	FIXTURE FINISH	WH (White), BK (Black), Custom RAL
COLOR QUALITY	3 Step MacAdam Ellipse	MATERIAL COLORS	Refer to SoftSense Material Color Chart
DIMMING & CONTROLS	0-10V Flicker Free 1% Dimming Standard (DIM10)	LIFETIME	L70 at 50,000 Hours
EMERGENCY (REMOTE)	REM-EMG-LED-15W-HV-FLEX REM-EMG-LED-25W-HV-FLEX	PHOTOMETRIC TESTS	In Accordance with IES LM79-08, LM-80 and TM-30, TM-21

"Rhapsody" family consists of acoustic pendant or suspended fixtures. The luminaire's simple, classic look provides light over any environment and the added acoustic feature makes it suitable for any design application such as schools, boardrooms, office areas, hotels, lobbies, restaurants, etc.

Flat - Elevate your ambiance: this minimalist hexagonal ring light with an integrated acoustic panel brings style, illumination, and sound control together in a chic, pancake-like design.



06.09.25

OPTICS & PERFORMANCE

The LOOP Hexagonal LED Suspended Direct/Indirect Luminaire is a high-performance lighting solution designed to enhance any space with its sleek design and seamless, uniform glow.

LUMINAIRE CONSTRUCTION

Built as one continuous, 4" tall extruded aluminum piece with a matching seamless, flexible PC diffuser lens, this luminaire ensures both ease of installation and a minimalist, elegant charm.

ACOUSTIC CONSTRUCTION

The metal frame is positioned atop the fixture, securely sandwiched between two layers of our acoustic panels. This design ensures a durable structure that resists sagging over time while enhancing noise absorption due to the increased material thickness.

MOUNTING / SUSPENSION

The fixture includes a central canopy mounting as the standard configuration. For side canopy mounting, field modification is required. The luminaire is supplied with three 11' suspension cables, one central canopy, one wire holder, and one side canopy.

WARRANTY

Limited five-year warranty.

LISTINGS

IP40
L80B20 at 50,000 hours
All LED luminaires are rated and tested to LM-79 and LM-80 standards by an independent laboratory.

MAINTENANCE

Acoustic material can be cleaned with a clean, soft, lint-free cloth or a vacuum.

ACOUSTIC MATERIAL - 9mm / 0.35" Thickness

Our panels come in 4' x 8' and are made from 100% polyethylene terephthalate (PET), with 50% post-consumer recycled material. PET is a moisture resistant green product with no added chemicals, binders, adhesives or dyes.

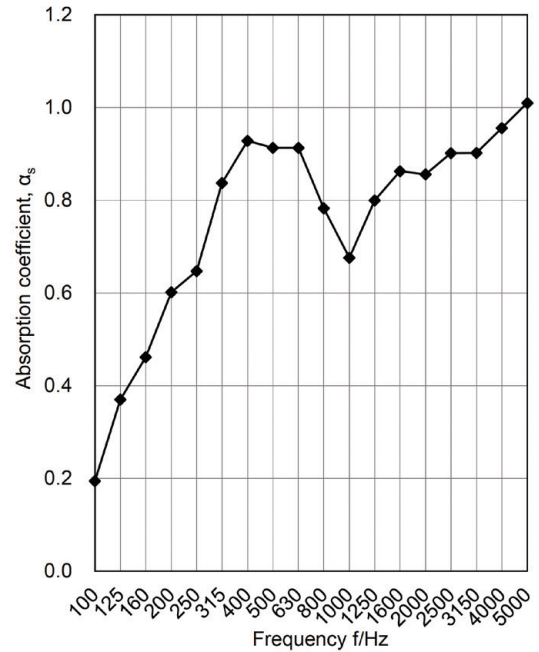
ACOUSTIC PANEL PERFORMANCE - 4' x 8' Panels

Acoustic performance of specific fixture / product will greatly vary based on mounting, installation, and configuration in a space.

Noise Reduction Coefficient (NRC) - 0.75

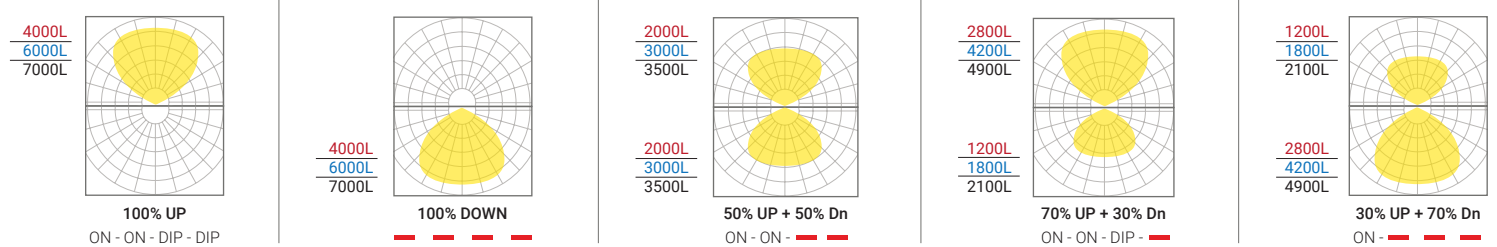
Weighted Sound Absorption Coefficient - $a_w = 0.85$

NRC is a widely used standard to test sound absorption for 2-dimensional objects. It is the average absorption coefficient obtained from four key 1/3 octave frequencies: 250, 500, 1000, 2000 Hz.



LUMEN DISTRIBUTION

CCT switch located inside the profile

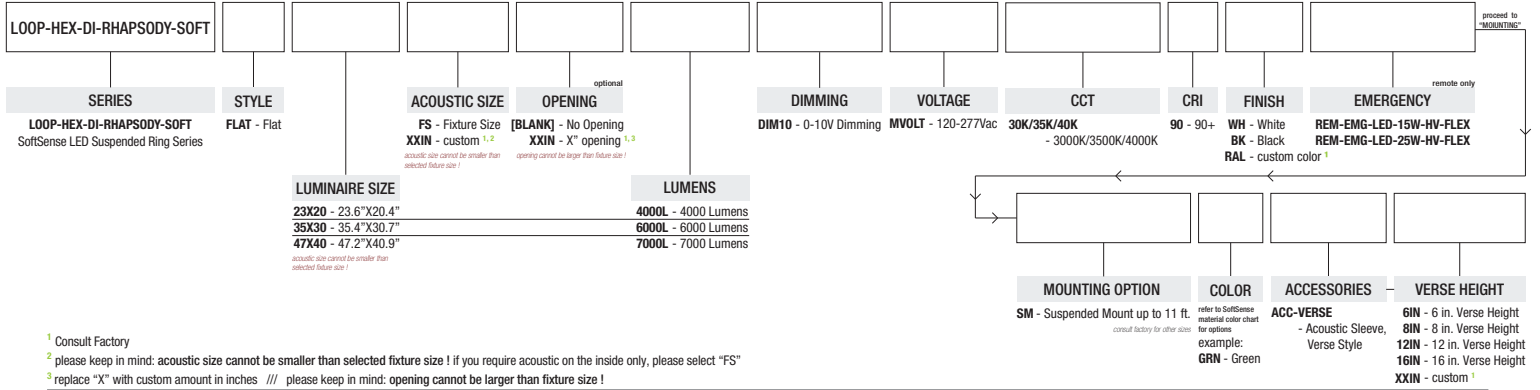


LUMEN DETAILS

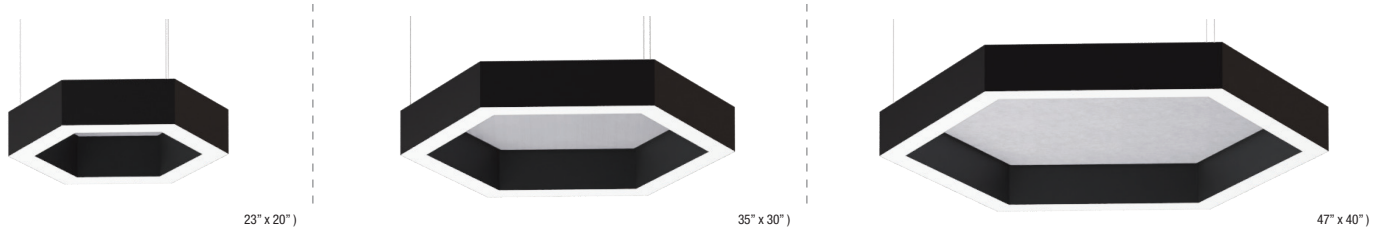
Based on 4000K, 90+ CRI.
Actual wattage may vary +/- 5%

DIRECT		
LUMINAIRE SIZE	LUMENS	WATTS
23" x 20"	4000	36
35" x 30"	6000	55
47" x 40"	7000	72

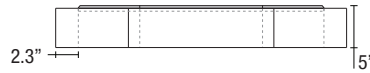
Example: **LOOP-HEX-DI-RHAPSODY-SOFT-FLAT-23X20-FS-4000L-DIM10-MVOLT-30K/35K/40K-90-BK-SM-GRN**



SIZE OPTIONS

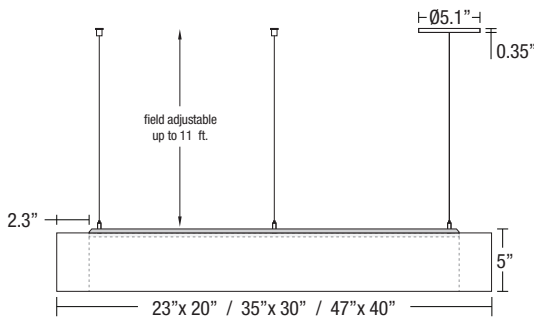


DIMENSIONS

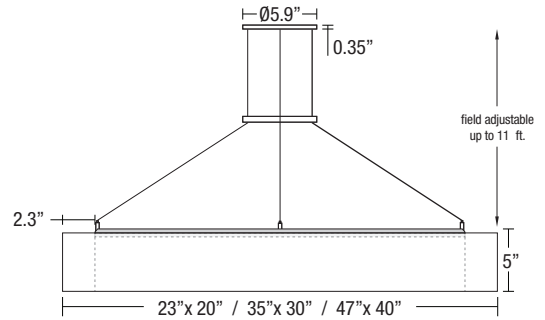


MOUNTING OPTIONS

SIDE CANOPY MOUNTING

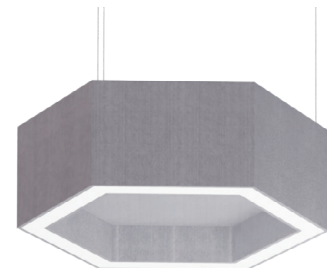
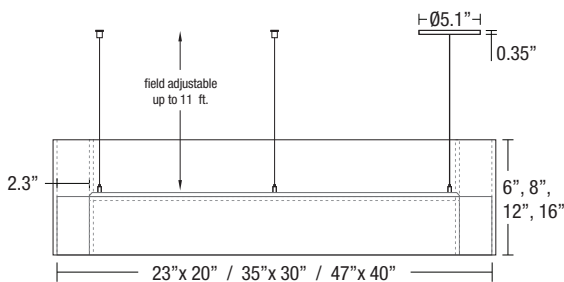


CENTRAL CANOPY MOUNTING



The fixture comes with a central canopy mounting as standard for all sizes. If side canopy mounting is desired, it must be modified in the field.

ACCESSORIES - ACC-VERSE



STANDARD COLORS

Panel Thickness: 9 mm / 0.35" (+/- 0.25 mm)



All panels ASTM E84-16 Fire Rated

STANDARD PRINTS

Panel Thickness: 8.5 mm / 0.34" (+/- 0.5 mm)



prints shown at 12% scale

Declare.
Label Pending



quick ship available for any color depending on order quantity
*all colors are ASTM E84-16 fire rated, select colors are available as Class A