



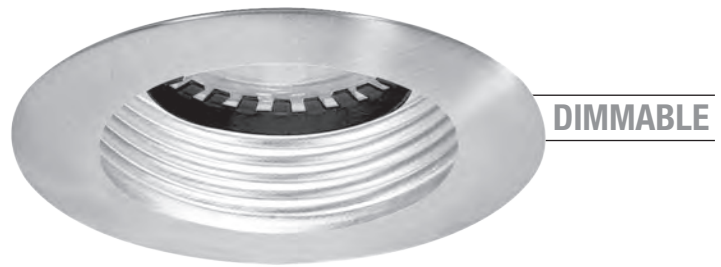
**DIMMABLE**

Surface/Recessed  
LED-EM-207W-WH-CW  
LED-EM-207W-WH-WW

**LED-EM-207** **A** - **B**

SERIES	(A)BAFFLE FINISH/ RING FINISH	(B)COLOR TEMP
LED-EM-207	<input type="checkbox"/> W-WH -White <input type="checkbox"/> W-PB - White- Polish Brass <input type="checkbox"/> W-CH - White- Polish Brass <input type="checkbox"/> W-BK -White- Black	<input type="checkbox"/> WW- Warm White <input type="checkbox"/> CW- Cool White

Dimmable if used with 12V magnetic transformer and magnetic low voltage dimmer



**DIMMABLE**

Surface/Recessed  
LED-EM-206SN-SN-CW  
LED-EM-206SN-SN-WW

**LED-EM-206** **A** - **B**

SERIES	(A)BAFFLE FINISH/ RING FINISH	(B)COLOR TEMP
LED-EM-206	<input type="checkbox"/> P-PB- Black- Polish Brass <input type="checkbox"/> P-WH- Polish Brass- White <input type="checkbox"/> SN-SN- Satin Nickel <input type="checkbox"/> RG-PB- Polish Brass	<input type="checkbox"/> P-CH- Polish Brass- Chrome <input type="checkbox"/> P-BK- Black <input type="checkbox"/> CP-CP- Copper <input type="checkbox"/> WW- Warm White <input type="checkbox"/> CW- Cool White

Dimmable if used with 12V magnetic transformer and magnetic low voltage dimmer



**DIMMABLE**

Surface/Recessed  
LED-EM-208WH-CW  
LED-EM-208WH-WW

**LED-EM-208** **A** - **B**

SERIES	(A)BAFFLE FINISH/ RING FINISH	(B)COLOR TEMP
LED-EM-208	<input type="checkbox"/> SN- Satin Nickel <input type="checkbox"/> PB- Polish Brass <input type="checkbox"/> WH- White <input type="checkbox"/> BK- Black <input type="checkbox"/> CH- Chrome <input type="checkbox"/> CP- Copper	<input type="checkbox"/> WW- Warm White <input type="checkbox"/> CW- Cool White

Dimmable if used with 12V magnetic transformer and magnetic low voltage dimmer



**DIMMABLE**

Surface/Recessed  
LED-EM-212CL-WH-CW  
LED-EM-212CL-WH-WW

**LED-EM-212** **A** - **B**

SERIES	(A)BAFFLE FINISH/ RING FINISH	(B)COLOR TEMP
LED-EM-212	<input type="checkbox"/> CL-WH-Chrome- White	<input type="checkbox"/> WW- Warm White <input type="checkbox"/> CW- Cool White

Dimmable if used with 12V magnetic transformer and magnetic low voltage dimmer

**Description:**

- Ideal for cabinets where crisp white LED light is desired
- Includes housing to be used with remote transformer
- All die-cast construction
- Ceiling opening is 3-1/8"
- 3W LED Warm White\* 180 lumens
- Available in Warm White & Cool White Color Temperature
- For dimming use magnetic 12V transformer with magnetic low voltage dimmer (BP50)

