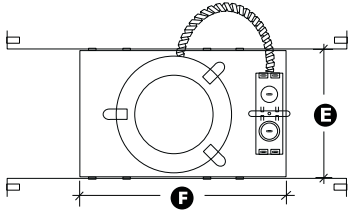
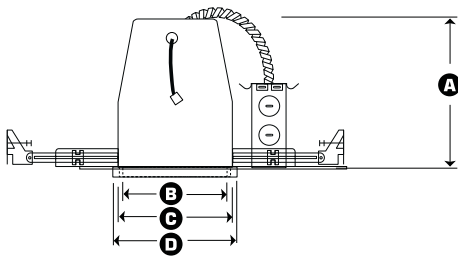
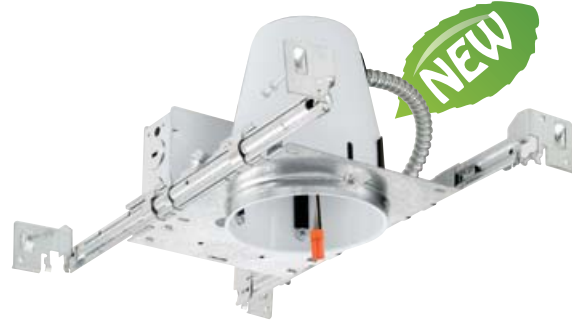


LD4-AT

4" New Construction NON-IC Housing for use with RL400 series LED Module lighting components



- A** Height = 5-1/2"
- B** Trim Aperture = 4"
- C** Cut-out = 4-1/2"
- D** Trim Outside Diameter = 5-1/2"
- E** Width = 5-1/2"
- F** Length = 8"



TO BE USED WITH RL400 SERIES LED MODULE LIGHTING COMPONENT

DESCRIPTION - 4" New construction Non-IC housing for use with RL400 LED series LED Module trims. Designed for new construction installations and suitable for use in ceilings where insulation is kept 3 inches from housing. The LD4-AT-DIMTR housing is engineered with a unique 'EZ-connect' wiring system, that when used with the RL400 trim, with California Title-24 (compliances pending). The unique EZ-connect system also meets other state and national regulatory mandates. LED Module connects effortlessly to housing, virtually eliminating mis-wiring and potential shock hazards.

NOTE - Complete system includes LD4-AT-DIMTR housing and LED Modules RL400 series trim. RL400 LED Modules trim must be ordered separately.

HOUSING - High-temperature painted 22-gauge deep drawn single piece housing. Adjusts vertically in plaster frame to accommodate 1-1/2" to 1-3/8" ceiling.

CONNECTION - Polarity-specific EZ-connect system engineered to match with Elite LED Module trims. Meets strict code requirements where Edison Base Sockets have been banned.

BAR HANGERS - Preinstalled bar hangers allow housing to be positioned and locked at any point within a 24" joist span. They can be positioned on either the long or short axis of the housing and can be shortened for 12" joists. They contain a double-headed real nail for secure attachment into the joist. Bar hanger nails are installed on a 20° downward angle for better contact, and the 90° pivoting mounting plate makes installation fast and accurate. Bar hangers can fit onto T-Bar spline with additional slots and holes for special mounting methods if necessary.

Example: LD4-AT-DIMTR-120

HOUSING TYPE			
<input type="checkbox"/> LD4-AT-DIMTR-120 - Used For Triac Dimming Module			
<input type="checkbox"/> LD4IC-AT-DIM10 - Used For 0-10V Dimming Module			
<input type="checkbox"/> LD4-AT-277 - Used For Non Dimming Module			
TRIM TYPE	650L/900L SERIES	CCT	CRI
<input type="checkbox"/> RL430 (Baffle)	<input type="checkbox"/> 650L-DIMTR-120 <input type="checkbox"/> 650L-DIM10	<input type="checkbox"/> 27K <input type="checkbox"/> 30K <input type="checkbox"/> 35K	<input type="checkbox"/> 85+ <input type="checkbox"/> 90+
<input type="checkbox"/> RL411 (Baffle Wall Wash)	<input type="checkbox"/> 650L-277 (Non Dimmable) <input type="checkbox"/> 900L-DIMTR-120 <input type="checkbox"/> 900L-DIM10	<input type="checkbox"/> 40K <input type="checkbox"/> 50K (CRI 85+ Only)	
<input type="checkbox"/> RL407 (Reflector)	<input type="checkbox"/> 900L-277 (Non Dimmable)		<input type="checkbox"/> 85+ <input type="checkbox"/> 90+
<input type="checkbox"/> RL422 (Reflector Wall Wash)			<input type="checkbox"/> CL-WH <input type="checkbox"/> CP-WH <input type="checkbox"/> W-WH <input type="checkbox"/> MB-WH <input type="checkbox"/> BZ-BZ <input type="checkbox"/> RG-WH <input type="checkbox"/> SN-SN
<input type="checkbox"/> RL428	<input type="checkbox"/> 650L-DIMTR-120	<input type="checkbox"/> 30K	<input type="checkbox"/> 85+ <input type="checkbox"/> 90+

JUNCTION BOX - UL Listed for through-branch circuit wiring, provided with eight 1/2" knockouts and four Romex knockouts with true pry-out slots and strain clamps.

THERMAL PROTECTION - Standard thermal protection device guards against improper installation and misuse of insulation material.

ELITE LED MODULE SOLD SEPARATELY - LED Modules unique 'EZ-connect' wiring system is Title 24 compliant when used with the LD4-AT. The unique EZ-connect system also meets other state and national regulatory mandates. System is a UL Listed disconnect system that preserves the integrity of the energy-efficient system by insuring only Elite brand trims are used. The EZ-connect system prevents installation of less efficient incandescent luminaires and LEDs.

AIR-SHUT - Provided with gasket to prevent airflow from heated or air-conditioned spaces. Meets or exceeds all national air flow requirements.

LISTING

c-UL-us - listed for Damp location
c-UL-us - listed for feed Through Wiring
LM79/LM80
Covered by U.S. Patent Number: 7717390B1

DIMMING INFORMATION

DIMTR (Triac Dimming)



LED

4"

4 INCH NEW CONSTRUCTION NON-IC HOUSING