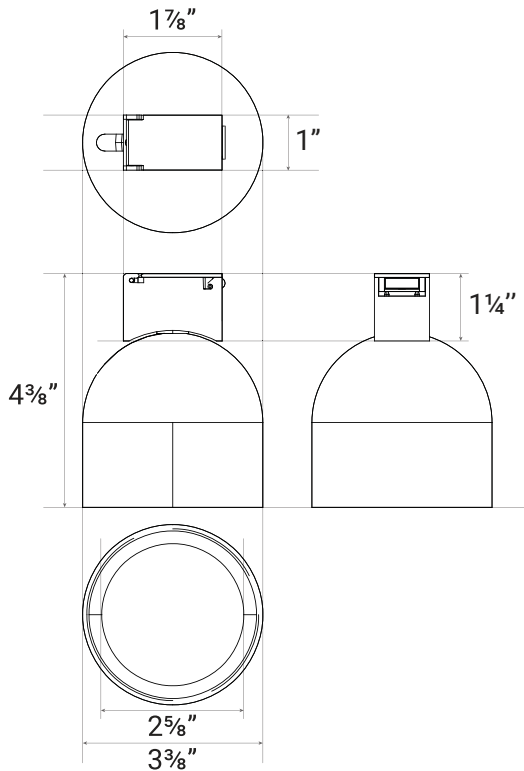




Rotate 350° Tilt 45°



LITE_BELT SPOT RONDO SERIES

The Lite_Belt Spot Rondo (LBL-T2-1) is a compact adjustable spotlight designed to mount at any position along the Lite_Belt woven belt system.

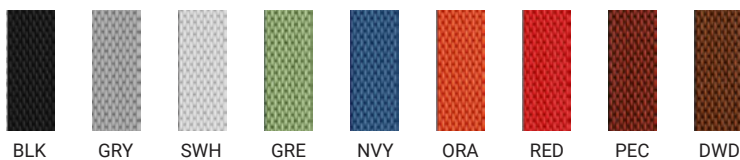
The luminaire features full 350° horizontal rotation and 45° vertical tilt, allowing precise aiming and flexible light direction within the space.

Its cylindrical form integrates cleanly with the belt while offering highly controlled, focused illumination for accent and task lighting applications.

With its wide range of adjustability, Spot Rondo enables light to be directed exactly where needed, supporting dynamic and adaptable lighting compositions.

SERIES	DELIVERED LUMENS	WATTAGE
LBL-T12-1	400 LM	7W

Based on 4000K, 90+ CRI. Actual wattage may vary +/- 5%



SERIES	Lite_Belt 'Spot Rondo' Series
CCT	2700K, 3000K, 3500K, 4000K, 5000K
CRI	>90
COLOR QUALITY	2 Step MacAdam Ellipse
BEAM ANGLE	Narrow Spot 15°
FINISH	● BK (Black) ○ WH (White)
DIMMING	DIM10 - (0-10V Dimming)
LIFETIME	L70 at 60,000 Hours
PHOTOMETRIC TESTS	In Accordance with IES LM79-08, LM80 and TM-30, TM-21



FEATURES OF LITE_BELT FAMILY

The Lite_Belt system is a flexible lighting platform designed to support a wide range of sculptural and linear configurations through a woven belt structure. Various luminaire types—including Linear Diffused, Sphere, Globe, and Cylinder elements—are mounted directly onto a 21 mm wide sewn woven belt, allowing fixtures to be positioned freely along the belt without fixed cut units.

The woven belt is supplied in continuous lengths up to 100 ft and can be trimmed on site to accommodate custom layouts and spatial requirements. With no predefined cutting increments, designers have full freedom to shape each installation precisely to the intended form.

Lite_Belt belts are available in a broad palette of colors to complement diverse interior environments, including black, snow white, gray, orange, brown, terracotta, green, red, and navy blue, among others. This variety enables both subtle integration and bold visual expression within architectural spaces.

The system supports both loose, draped compositions—where luminaires appear casually bound along the belt—and taut, tensioned installations with clean linear alignment. This duality allows Lite_Belt to function as either an expressive decorative feature or a refined architectural lighting element.

A comprehensive range of accessories, including canopies, power connectors, and mounting clips, supports recessed, surface-mounted, and suspended applications, providing clean and flexible terminations for a wide variety of installation scenarios.

SYSTEM POWER & PERFORMANCE

Each Lite_Belt system is recommended to operate at a maximum total load of 150 W per belt run. To minimize voltage drop and maintain consistent performance, the following guidelines are recommended:

- Up to 10 m: ≤ 100 W
- Up to 20 m: 150–200 W
- Up to 30 m: up to 300 W

Voltage drop may occur at belt lengths exceeding 30 m. Proper power planning is recommended for extended runs.

LED MODULE PERFORMANCE

Lite_Belt is suitable for decorative, ambient, and feature lighting across hospitality, retail, gallery, workplace, and residential environments. Its modular nature and visual flexibility make it ideal for projects requiring customized forms, adaptable layouts, and expressive lighting compositions.

APPLICATIONS

The Lite_Belt System’s luminaires are equipped with 2-step McAdam Eclipse LEDs, which provide consistent color across all fixtures, and 90+CRI. The LEDs are available in a variety of kelvin temperature options.

WARRANTY

Five-year warranty for parts and components.

EXAMPLE:

SERIES	DISTRIBUTION	CCT	CRI	FINISH	OPTION
<input type="checkbox"/> LBL-T2-1	<input type="checkbox"/> NS=15°	<input type="checkbox"/> 27K <input type="checkbox"/> 30K <input type="checkbox"/> 35K <input type="checkbox"/> 40K <input type="checkbox"/> 50K	<input type="checkbox"/> 90	<input type="checkbox"/> BK <input type="checkbox"/> WH	<input type="checkbox"/> 48V

LITE_BELT LUMINAIRE OPTIONS:



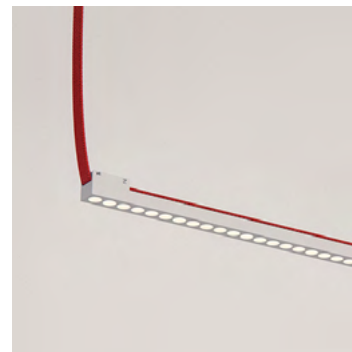
LBL-L1R-24
Linear Diffused



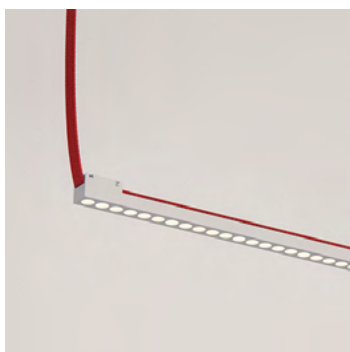
LBL-L1R-32
Linear Diffused



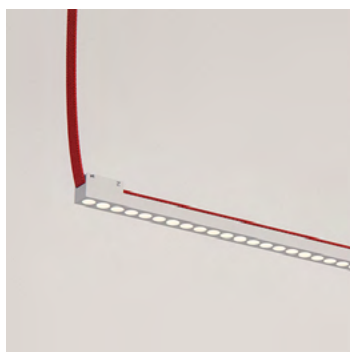
LBL-L1R-40
Linear Diffused



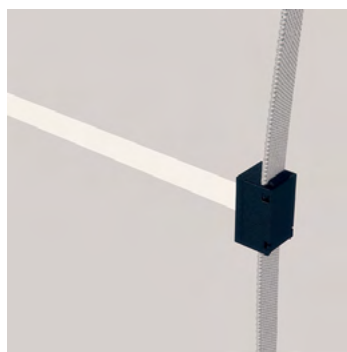
LBL-L4R-24
Linear Downlight & Task



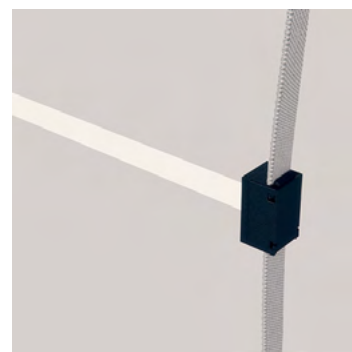
LBL-L4R-32
Linear Downlight & Task



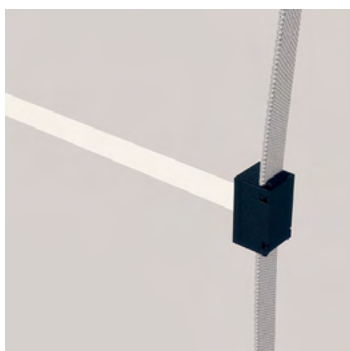
LBL-L4R-40
Linear Downlight & Task



LBL-LS-12
In-Between Linear Diffused



LBL-LS-20
In-Between Linear Diffused



LBL-LS-28
In-Between Linear Diffused



LBL-T12-1
Cylinder Downlight



LBL-T2-1
Spot Rondo



LBL-T15-1
Dome Light



LBL-P2-1
Pendant Chandelier



LBL-T1R-1
Cylinder Diffused



LBL-T3R-1
Cylinder Regressed