

LITE_BELT GLOBE SERIES

The Lite_Belt LBL-T11-1 Globe is a spherical luminaire designed to mount freely at any position along the Lite_Belt woven belt system.

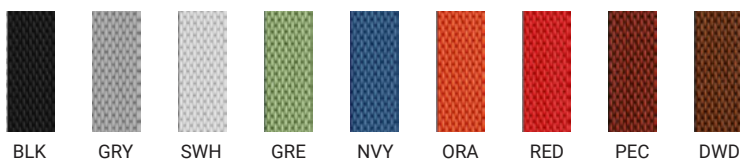
Featuring a fully diffused globe, the luminaire emits soft, uniform light in all directions, creating a calm and balanced ambient illumination within the space.

The globe form integrates naturally with the flexible belt, allowing the light to appear suspended and lightly positioned within sculptural belt configurations.

LBL-T11-1 provides gentle spatial illumination for decorative, ambient, and feature lighting applications, complementing both loose and tensioned Lite_Belt installations.

| SERIES | DELIVERED LUMENS | WATTAGE |
|-----------|------------------|---------|
| LBL-T11-1 | 900 LM | 8W |

Based on 4000K, 90+ CRI. Actual wattage may vary +/- 5%



| | |
|-------------------|---|
| SERIES | Lite_Belt 'Globe' Series |
| CCT | 2700K, 3000K, 3500K, 4000K, 5000K |
| CRI | >90 |
| COLOR QUALITY | 2 Step MacAdam Ellipse |
| BEAM ANGLE | Very Wide Flood 120° |
| FINISH | ● BK (Black) ○ WH (White) |
| DIMMING | DIM10 - (0-10V Dimming) |
| LIFETIME | L70 at 60,000 Hours |
| PHOTOMETRIC TESTS | In Accordance with IES LM79-08, LM80 and TM-30, TM-21 |



FEATURES OF LITE_BELT FAMILY

The Lite_Belt system is a flexible lighting platform designed to support a wide range of sculptural and linear configurations through a woven belt structure. Various luminaire types—including Linear Diffused, Sphere, Globe, and Cylinder elements—are mounted directly onto a 21 mm wide sewn woven belt, allowing fixtures to be positioned freely along the belt without fixed cut units.

The woven belt is supplied in continuous lengths up to 100 ft and can be trimmed on site to accommodate custom layouts and spatial requirements. With no predefined cutting increments, designers have full freedom to shape each installation precisely to the intended form.

Lite_Belt belts are available in a broad palette of colors to complement diverse interior environments, including black, snow white, gray, orange, brown, terracotta, green, red, and navy blue, among others. This variety enables both subtle integration and bold visual expression within architectural spaces.

The system supports both loose, draped compositions—where luminaires appear casually bound along the belt—and taut, tensioned installations with clean linear alignment. This duality allows Lite_Belt to function as either an expressive decorative feature or a refined architectural lighting element.

A comprehensive range of accessories, including canopies, power connectors, and mounting clips, supports recessed, surface-mounted, and suspended applications, providing clean and flexible terminations for a wide variety of installation scenarios.

SYSTEM POWER & PERFORMANCE

Each Lite_Belt system is recommended to operate at a maximum total load of 150 W per belt run. To minimize voltage drop and maintain consistent performance, the following guidelines are recommended:

- Up to 10 m: ≤ 100 W
- Up to 20 m: 150–200 W
- Up to 30 m: up to 300 W

Voltage drop may occur at belt lengths exceeding 30 m. Proper power planning is recommended for extended runs.

LED MODULE PERFORMANCE

Lite_Belt is suitable for decorative, ambient, and feature lighting across hospitality, retail, gallery, workplace, and residential environments. Its modular nature and visual flexibility make it ideal for projects requiring customized forms, adaptable layouts, and expressive lighting compositions.

APPLICATIONS

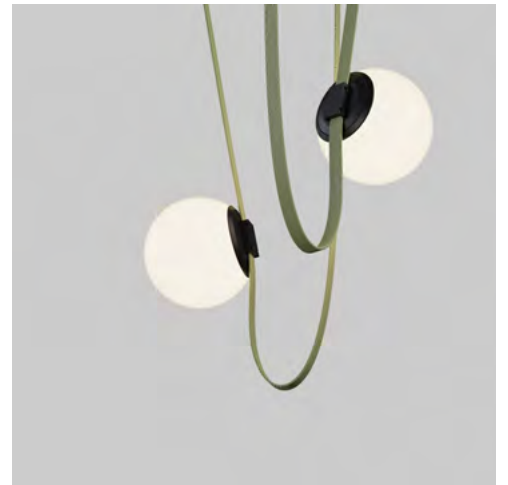
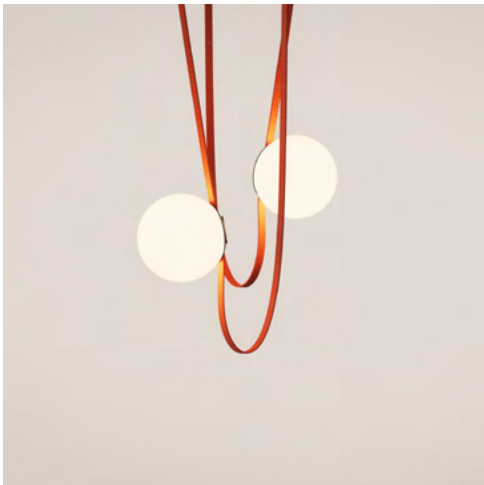
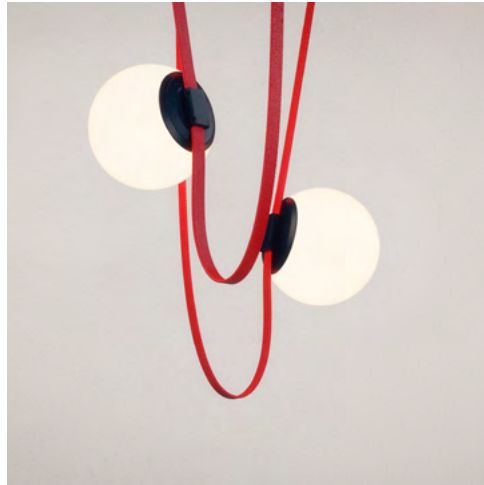
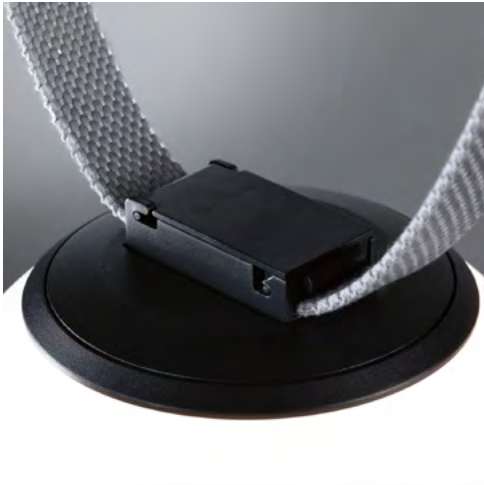
The Lite_Belt System’s luminaires are equipped with 2-step McAdam Eclipse LEDs, which provide consistent color across all fixtures, and 90+CRI. The LEDs are available in a variety of kelvin temperature options.

WARRANTY

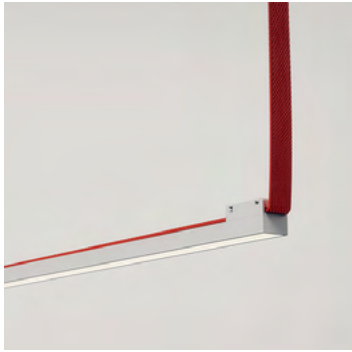
Five-year warranty for parts and components.

EXAMPLE:

| SERIES | DISTRIBUTION | CCT | CRI | FINISH | OPTION |
|------------------------------------|------------------------------------|--|-----------------------------|--|------------------------------|
| <input type="checkbox"/> LBL-T11-1 | <input type="checkbox"/> VWFL=120° | <input type="checkbox"/> 27K <input type="checkbox"/> 30K <input type="checkbox"/> 35K <input type="checkbox"/> 40K <input type="checkbox"/> 50K | <input type="checkbox"/> 90 | <input type="checkbox"/> BK <input type="checkbox"/> WH | <input type="checkbox"/> 48V |



LITE_BELT LUMINAIRE OPTIONS:



LBL-L1R-24
Linear Diffused



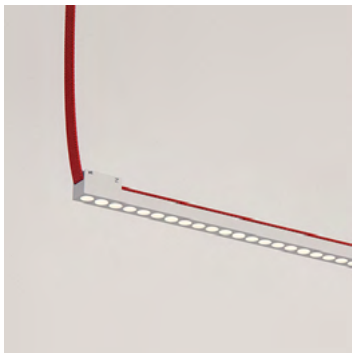
LBL-L1R-32
Linear Diffused



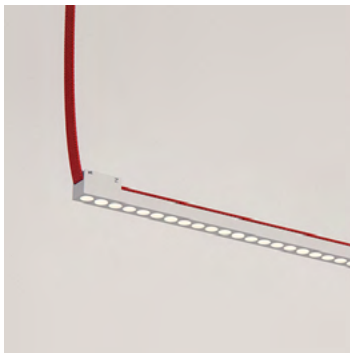
LBL-L1R-40
Linear Diffused



LBL-L4R-24
Linear Downlight & Task



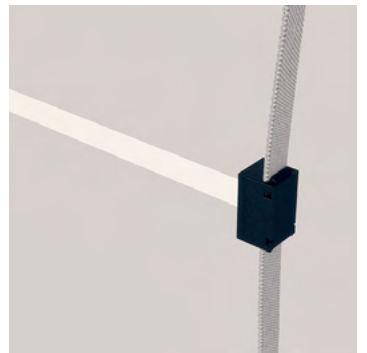
LBL-L4R-32
Linear Downlight & Task



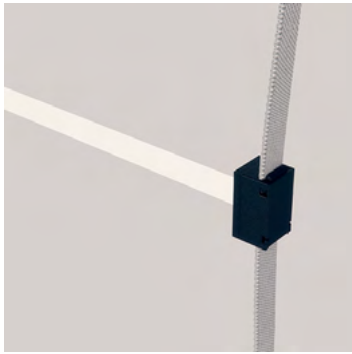
LBL-L4R-40
Linear Downlight & Task



LBL-LS-12
In-Between Linear Diffused



LBL-LS-20
In-Between Linear Diffused



LBL-LS-28
In-Between Linear Diffused



LBL-T12-1
Cylinder Downlight



LBL-T2-1
Spot Rondo



LBL-T15-1
Dome Light



LBL-P2-1
Pendant Chandelier



LBL-T1R-1
Cylinder Diffused



LBL-T3R-1
Cylinder Regressed