

**LB5000**  
**Side Emitting Strip Light**  
**Width 0.2" / 5mm**  
**37 LEDs /FT**



**FEATURES**

The **LB5000 Lumi-PRO Strip Light** is a mini-sized, easy-to-install, side-emitting lighting solution designed for **indoor applications**. It offers a range of color temperatures: **2700K, 3000K, 4000K, 5000K, and 6500K**, providing flexibility to create the desired ambiance and lighting effects in various **indoor spaces**.

Seamlessly integrating into diverse indoor settings, the **LB5000 Lumi-PRO Strip Light** is mountable on different surfaces, including **walls, ceilings, or furniture**, making it suitable for **residential, commercial, or hospitality** environments.

Max run up to 9.8ft

Indoor Location (IP22)

**0.2" width**

Field cuttable every 1.97"

**Warranty: 5 years**

**Color Temp.**      **2.9 W/ft.**

2700K	215 lm/ft
3000K	220 lm/ft
4000K	245 lm/ft
5000K	245 lm/ft
6500K	245 lm/ft

**WIRING ACCESSORIES** (Tape light comes with 4ft standard length soldered lead attached on one side)

**DCM (1 Piece Included)**



**Male Connector**  
12" Length

**DCF (1 Piece Included)**



**Female Connector**  
12" Length

**SL-2 (Standard SL Attached)**



**Soldered Lead**  
4ft standard length  
(custom length sizes available)

**JPSL-2 (Optional)**



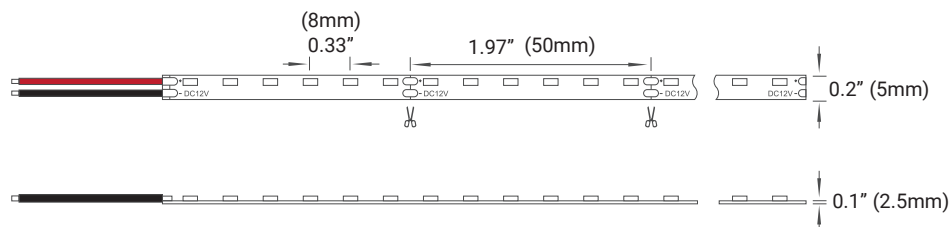
**Soldered Jumper**  
6" L jumper  
(custom length sizes available)

**TECHNICAL DETAILS**

<b>Power</b>	2.9W/ft
<b>Voltage</b>	24V
<b>CRI</b>	90+
<b>LED Qty</b>	37/ft
<b>Max Run(ft)</b>	9.8ft
<b>Cutting Length</b>	Every 1.97"
<b>Dimensions</b>	W0.2" X H0.1"
<b>Working Temp.</b>	-4F / +122F

Experience **unparalleled** performance with our precision-engineered, high-quality **Lumi-PRO LB5000 LED Strip Light**, meticulously designed to meet the demands of the **most challenging applications**.

**DIMENSIONS**



It Can be ordered in 3 different ways.

**1. Everything will be shipped separately**

- Tape light, cover, extrusion and accessories will be cut and shipped to your desired length.

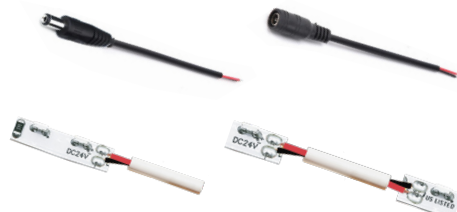


**Tape Light**



**Cover, mounting clips, end caps, and channel if ordered.**

**Accessories if ordered.**



**2. Pre-assembled and shipped separately as two units**

- Tape light, cover, extrusion and accessories will be cut and shipped to your desired length.
- Wiring accessories will be attached to the tape light.
- Cover, end caps and clips will be assembled to the channel.



**Wiring accessories attached to the tape light.**



**Channel will be cut and assembled to your desired length.**

**3. Fully assembled and shipped as a single unit**

- Tape light, cover, extrusion and accessories will be cut and shipped to your desired length.
- Wiring accessories will be attached to the tape light.
- Tape light will be installed into the channel and ready to use.



Refer to the next page for **COMPATIBLE** channels.

**ORDERING SELECTION**

Example: LB5000-2.9W-16F-30K-24V

Example: LB5000 2.9W 16F 50K 24V

LB5000						End 1		End 2	
SERIES	WATTAGE	LENGTH	CCT	VOLTAGE	WIRING ACCESSORIES			DRIVER	
LB5000	2.9W - 2.9W/ft	16F - 16ft / Roll CUS_ - Custom (Cutting length every 1.97")	27K - 2700K 30K - 3000K 40K - 4000K 50K - 5000K 65K - 6500K	24V - 24V	DCM - DC Male Connector DCF - DC Female Connector SL-2 - Soldered Lead (custom length sizes available) JPSL-2 - Soldered Jumper (custom length sizes available)			Refer to the next page for available options.	
CONTROLLERS		SHIPPING OPTIONS							
LB-2830A - RF single color controller		RL - Rolls 16ft							
LB-2833-K5-MONO - RF single color dimmer		PA - Pre-Assembled							
LED25W-24 - Power supply		FA - Fully Assembled							
LB-1009EAWI - RF+WiFi receiver									

## Static White / Wall Controller RF

### Power Supply



ED-96W-24V-TRIAC-DIM10



ED-192W-24V-TRIAC-DIM10



ED-288W-24V-TRIAC-DIM10

### LED Receiver

#### LB-1009EAWi

<b>Input Voltage</b>	12-36 VDC
<b>Output Current</b>	4x8A
<b>Output Power</b>	4X(96-288)W
<b>Dimensions</b>	6.6"X2.3"X1.1"



LB-1009EAWi

## WALL CONTROLLER

#### LB-2830A

<b>Output Signal</b>	RF Signal
<b>Power Supply</b>	12-24 DC



**LED25W-24 ( Power Supply)**  
(Optional for wall controller)



Control 4 zones.

### Wall Control

### LED Tape Light



LB5000

## Static White / Wall Dimmer Controller RF

Power Supply



ED-96W-24V-TRIAC-DIM10



ED-192W-24V-TRIAC-DIM10



ED-288W-24V-TRIAC-DIM10

LED Receiver

### LB-1009EAWi

<b>Input Voltage</b>	12-36 VDC
<b>Output Current</b>	4x8A
<b>Output Power</b>	4X(96-288)W
<b>Dimensions</b>	6.6"X2.3"X1.1"



LB-1009EAWi

### WALL DIMMER CONTROLLER

LB-2833N-K5-MONO

<b>Output Signal</b>	RF Signal
<b>Power Supply</b>	3V (CR2032 battery)

Wall Control



Control 1 zone.

LED Tape Light



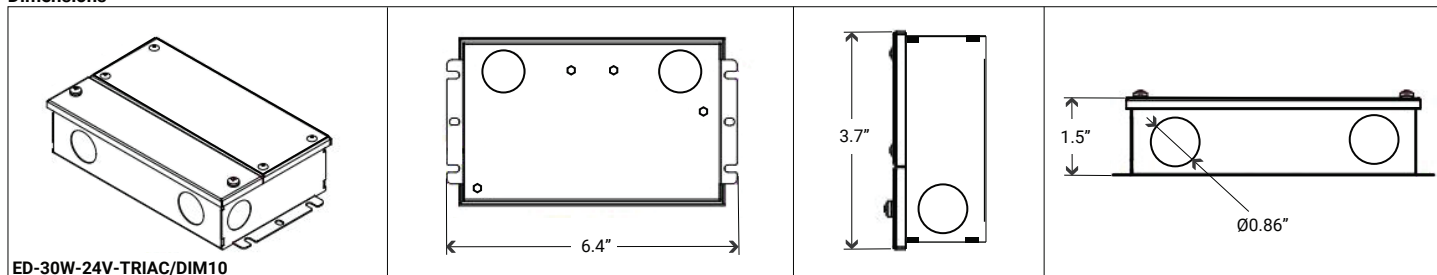
LB5000

**Triac-Phase Cut/Triac ELV/0-10V/1-10V PWM/Potentiometer (5 in 1) Dimmable**

**PN: ED-30W-24V-TRIAC/DIM10**

Model	Input Voltage	Output Voltage	Wattage	Max. Output current	Frequency	Location	Certificate
ED-30W-24V-TRIAC/DIM10	100-277VAC	24V	30W	1.25A	50/60Hz	Dry, Damp, and Wet locations	UL, cUL, FCC, Class 2, RoHS

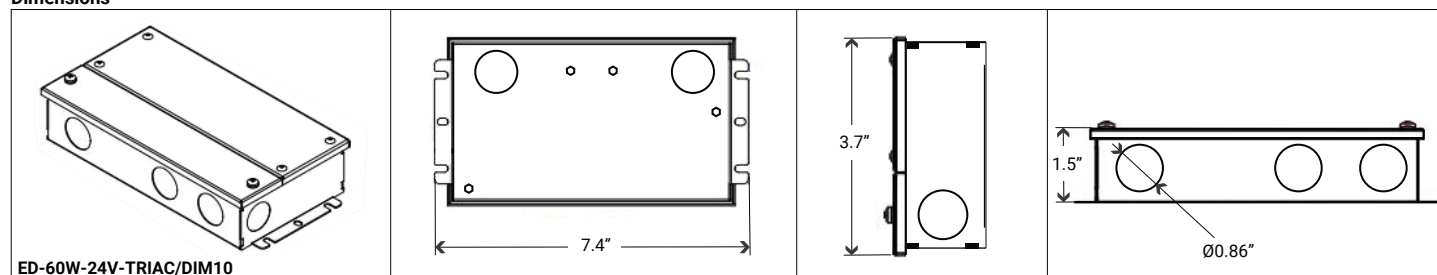
**Dimensions**



**PN: ED-60W-24V-TRIAC/DIM10**

Model	Input Voltage	Output Voltage	Wattage	Max. Output current	Frequency	Location	Certificate
ED-60W-24V-TRIAC/DIM10	100-277VAC	24V	60W	2.5A	50/60Hz	Dry, Damp, and Wet locations	UL, cUL, FCC, Class 2, RoHS

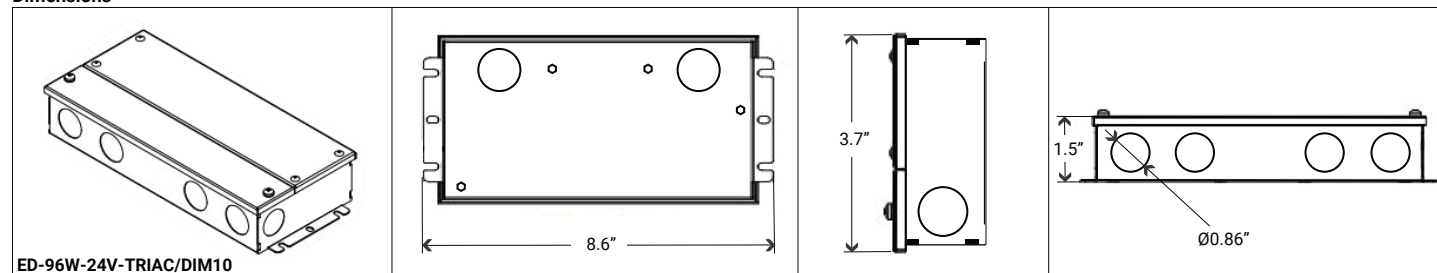
**Dimensions**



**PN: ED-96W-24V-TRIAC/DIM10**

Model	Input Voltage	Output Voltage	Wattage	Max. Output current	Frequency	Location	Certificate
ED-96W-24V-TRIAC/DIM10	100-277VAC	24V	96W	4A	50/60Hz	Dry, Damp, and Wet locations	UL, cUL, FCC, Class 2, RoHS

**Dimensions**

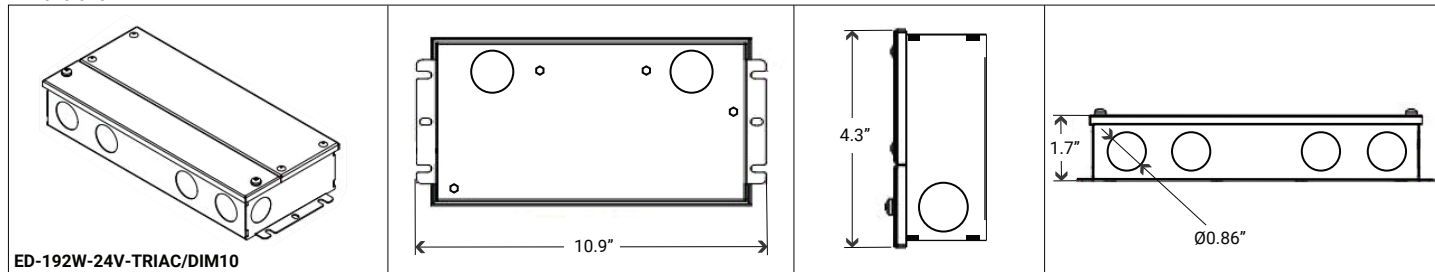


**Triac-Phase Cut/Triac ELV/0-10V/1-10V PWM/Potentiometer (5 in 1) Dimmable**

**PN: ED-192W-24V-TRIAC/DIM10**

Model	Input Voltage	Output Voltage	Wattage	Max. Output current	Frequency	Location	Certificate
ED-192W-24V-TRIAC/DIM10	100-277VAC	24V	192W	Multi 2X96W	50/60Hz	Dry, Damp, and Wet locations	UL, cUL, FCC, Class 2, RoHS

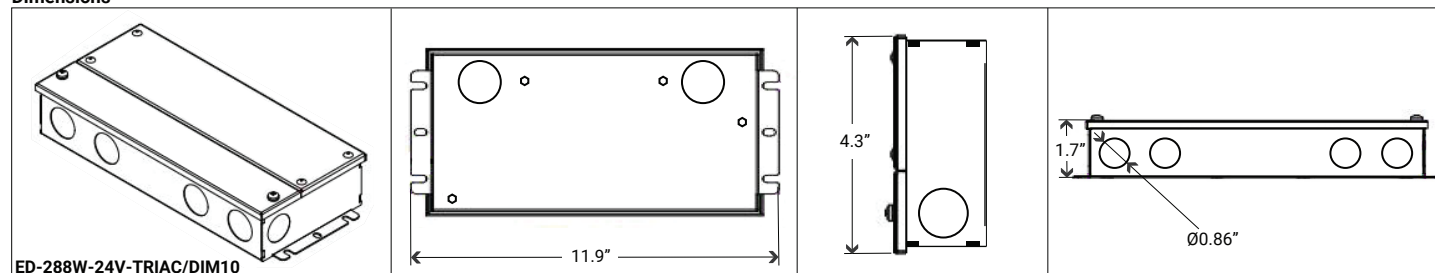
**Dimensions**



**PN: ED-288W-24V-TRIAC/DIM10**

Model	Input Voltage	Output Voltage	Wattage	Max. Output current	Frequency	Location	Certificate
ED-288W-24V-TRIAC/DIM10	100-277VAC	24V	288W	Multi 3X96W	50/60Hz	Dry, Damp, and Wet locations	UL, cUL, FCC, Class 2, RoHS

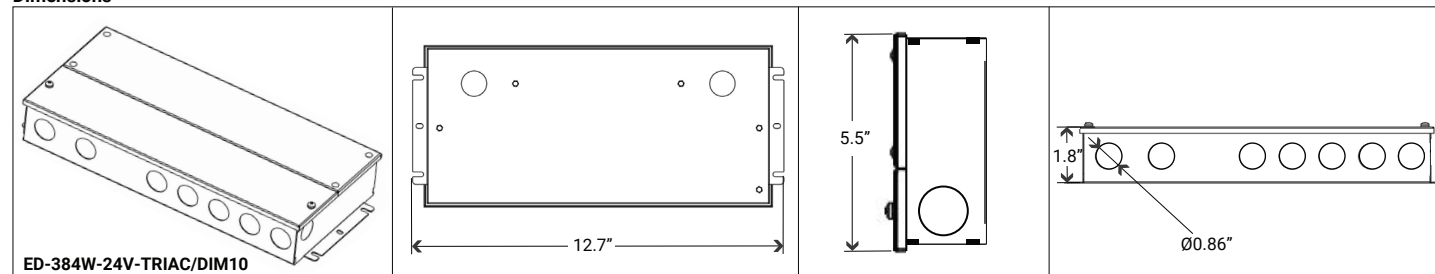
**Dimensions**



**PN: ED-384W-24V-TRIAC/DIM10**

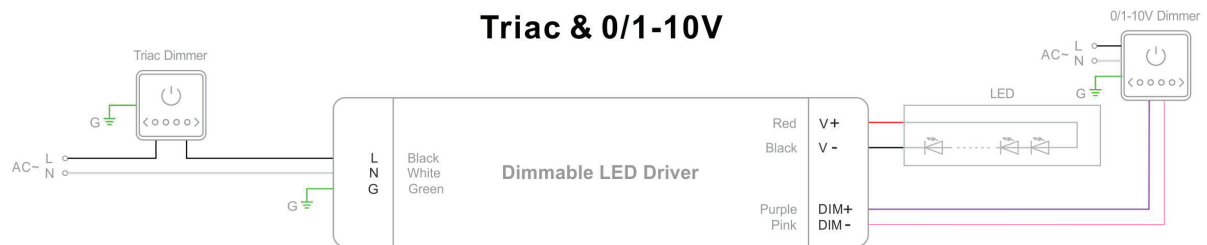
Model	Input Voltage	Output Voltage	Wattage	Max. Output current	Frequency	Location	Certificate
ED-384W-24V-TRIAC/DIM10	110-277VAC	24V	384W	Multi 4X96W	50/60Hz	Dry, Damp, and Wet locations	UL, cUL, Class 2, RoHS

**Dimensions**



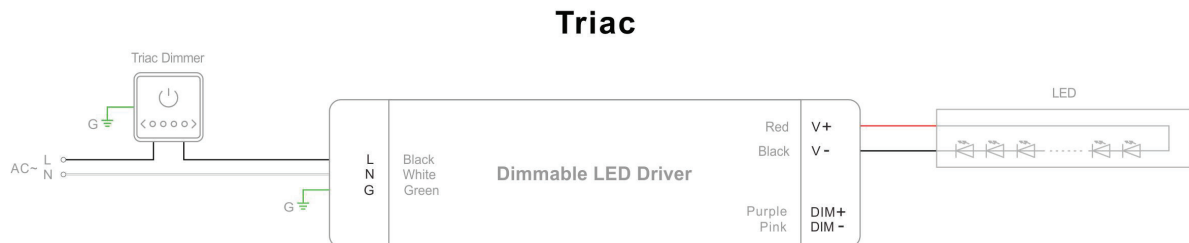
## Dimming Operation and Connecting Diagram

- **Using two ways of dimming at the same time**, you must be assured that LED lighting is up to the max. Brightness then you could operate with the other dimming;

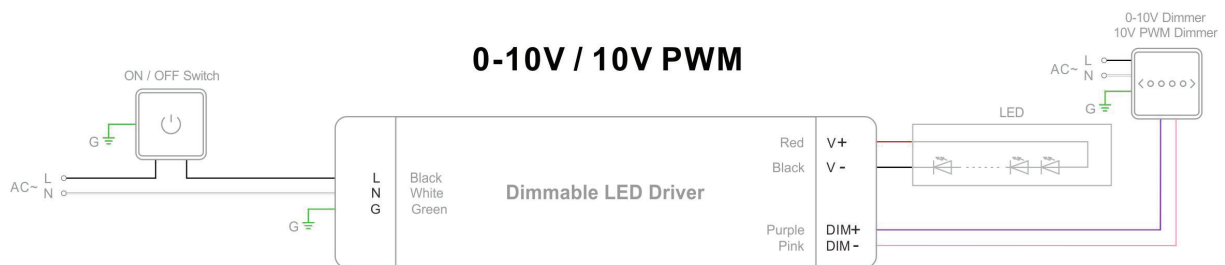


- **Using one dimming ---TRIAC/Phase cut dimming**

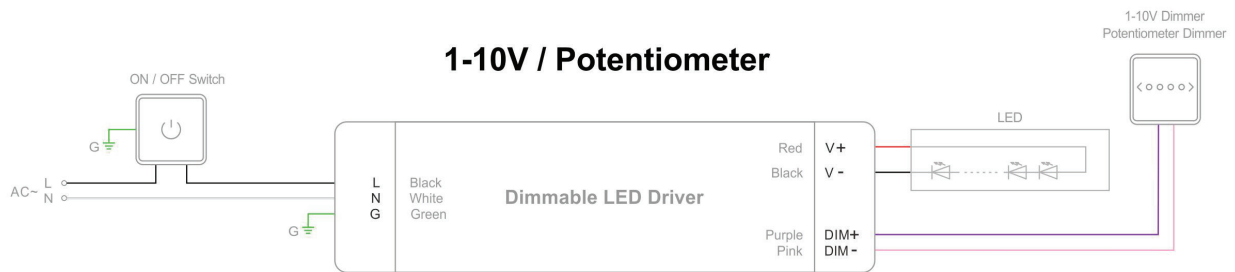
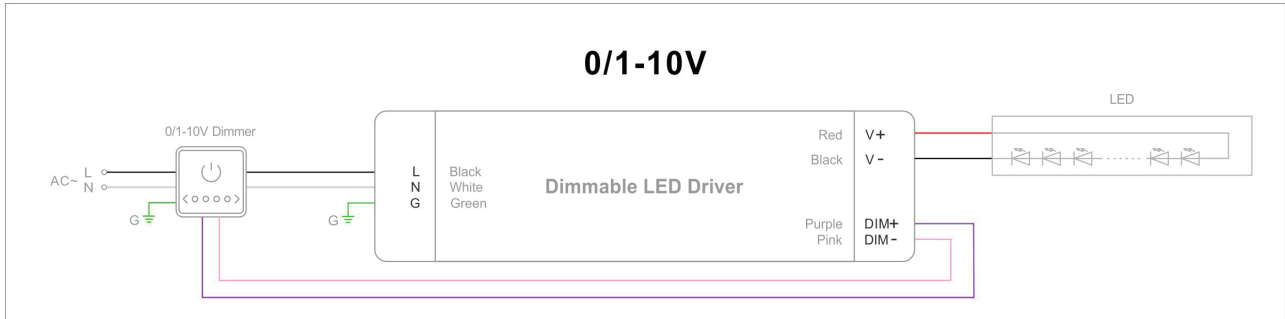
1. The Pulse-Width Modulation (PWM) of output voltage can be adjusted through input terminal of the AC phase line(L) by connection a phase /Triac dimmer or lighting system.
2. Working with forward phase, MLV and Reverse phase , ELV, TRIAC dimmers or light system.
3. Min. loading is about 10%
4. Please try to use dimmers with power at least 1.5 times as the output power of the driver.



- **Using one dimming ---0-10/ 1-10V/ 10V PWM/ Potentiometer dimming**







Triac/Phase cut & 0-10V/1-10V PWM/Potentiometer (5 in 1) Dimmable



**Constant Voltage TRIAC Dimmable Driver**

**PN: HBL040-AW-24-DA**

Model	Input Voltage	Output Voltage	Wattage	Rated Current	Frequency	Location	Certificate
HBL040-AW-24-DA	120-277VAC	24VDC	40W	1.66A	50/60Hz	Dry or Damp location	ETL, Class 2

TRIAC Dimming for 120VAC / Non-Dimming for 277VAC

**PN: HBL060-AW-24-DA**

Model	Input Voltage	Output Voltage	Wattage	Rated Current	Frequency	Location	Certificate
HBL060-AW-24-DA	120-277VAC	24VDC	60W	2.5A	50/60Hz	Dry or Damp location	ETL, Class 2

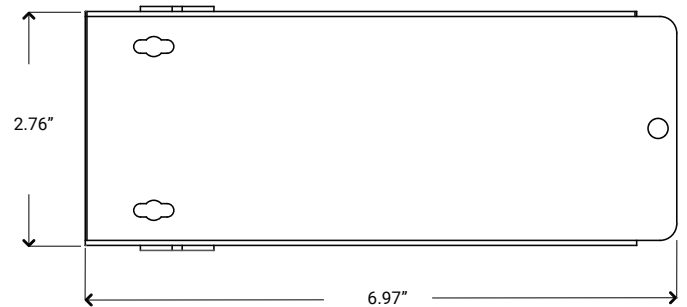
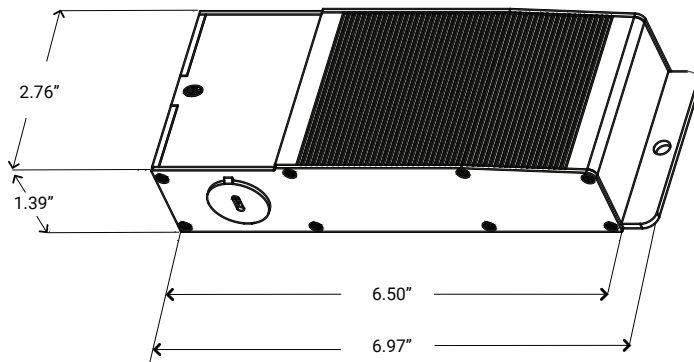
TRIAC Dimming for 120VAC / Non-Dimming for 277VAC

**PN: HBL096-AW-24-DA**

Model	Input Voltage	Output Voltage	Wattage	Rated Current	Frequency	Location	Certificate
HBL096-AW-24-DA	120-277VAC	24VDC	96W	4A	50/60Hz	Dry or Damp location	ETL, Class 2

TRIAC Dimming for 120VAC / Non-Dimming for 277VAC

**DIMENSIONS**

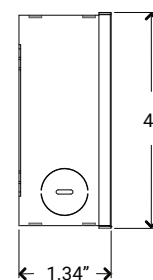
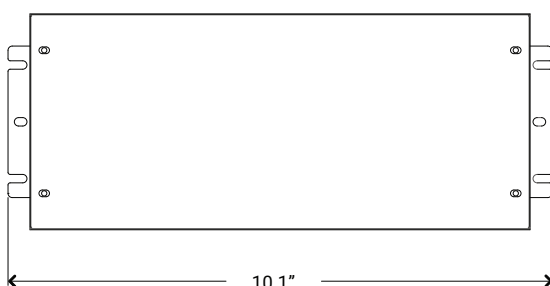


**PN: HBL150-AW-24-DI**

Model	Input Voltage	Output Voltage	Wattage	Rated Current	Location	Certificate
HBL150-AW-24-DI	120-277VAC	24VDC	150W	6.25A	Dry or Damp location	ETL, Class P

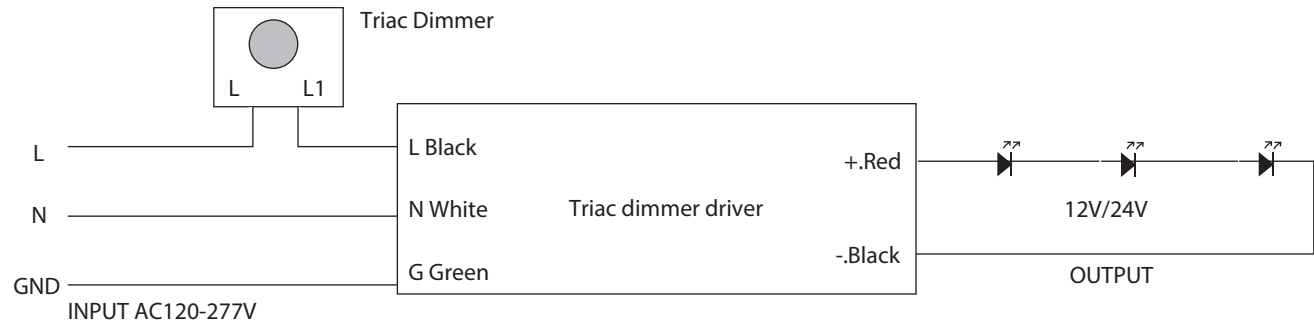
TRIAC Dimming for 120VAC / Non-Dimming for 277VAC

**DIMENSIONS**



## Constant Voltage TRIAC Dimmable Driver

### Connecting Diagram



### Dimmer Compatible Chart

Brand	Series	Model	Load	Dimmability
Lutron	Ariadni	AYCL-153P	150W	10%-100%
	Diva	DV-600PR	600W	1%-100%
	Diva	DVCL-153P	150W	10%-100%
	Maestro	MACL-153MH	600W	10%-100%
	Maestro Wireless	MRF2-6CL	150W	10%-100%
	Rotary	D-600P	600W	10%-100%
	Electronic(ELV)	NTELV-300P	600W	10%-100%
	Skylark	S-600P	600W	10%-100%
	Skylark Conytour	CT-600P	600W	1%-100%
	Skylark Conytour	CTCL-153P	150W	10%-100%
	Toggler	TG-600P	600W	10%-100%
	Toggler	TCCL-153P	150W	10%-100%
Leviton	Sureslide	6633	600W	10%-100%
	Sureslide Decora	6674	600W	20%-100%
	Trimatron	6602	600W	20%-100%
	ILLVMATECH	IPL06	600W	1%-100%
Legrand	Adorne	ADTP703TU	700W	20%-100%
	Harmony	H703PTW	700W	10%-100%
Cooper	Aspire	9540	1000W	10%-100%
	Devine	DAL06P	300W	10%-100%



### LB-2830A RF Single Color Controller

- Ultra-sensitive, high-strength glass touch panel features a color line for accurate, fast, and precise brightness control.
- Control 4 different zones separately or synchronously with endless receivers in each zone.
- Save 3 brightness or scenes for each zone.
- 256-level brightness adjustment for each white.
- Receivers can work with WiFi-RF converter after installing "Easylighting" app on IOS and android systems.

Compatible with: LB-1009EAWI

#### TECHNICAL DETAILS

Output Signal	RF Signal
Power Supply	12-24 VDC
Power Consumption	<20 mA
Operating Temperature	0-40°C / 32°F-104°F
Dimensions	4.7"X2.9"X1.1"
Mounting	Wall Mount
Color	White

Certifications	FCC / RoHS
Zones	4
Frequency	916.5MHz
Surface	Glass
Control	Single Color
Warranty	5 Years limited warranty



### LB-2833-K5-MONO Single Color Dimmer

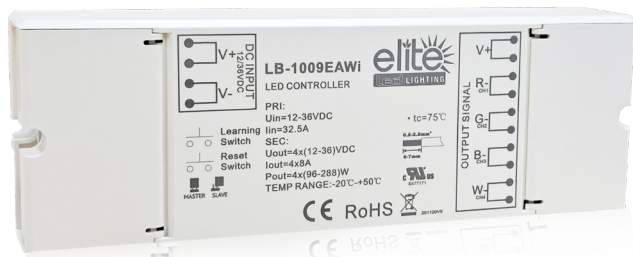
RF wireless Single Color Remote can control 1 zone of receiver. This single color controller is compatible with all universal series RF receivers. **One receiver can be paired with a maximum of 8 remote controllers.** This device contains a button lithium battery that should be stored and disposed of properly. **DO NOT expose the device to moisture.**

Compatible with: LB-1009EAWI

#### TECHNICAL DETAILS

Output Signal	RF Signal
Power Supply	3V (CR2032 battery)
Operating Temperature	0-40°C / 32°F-104°F
Dimensions	2.5"X1.2"X0.35"
Color	White

Certifications	FCC / RoHS
Zones	Control 1 Zone of receiver
Frequency	916.5MHz
Rated	IP20
Warranty	5 Years limited warranty



## LB-1009EAWI RF+WiFi Receiver/LED Controller 4Channels

The RGBW controller LB-1009EAWI is a 12-36 VDC constant voltage RF and WiFi controller with 4 channel output, offering 8A per channel. It is compatible with a variety of RF remotes and apps installed on iOS and Android systems, enabling control of single-color, dual-color LEDs, and RGBW LEDs.

Multiple zones can be controlled separately or synchronously with endless receivers in each zone. Built-in changing patterns are available and can be saved to each zone. The brightness of each R, G, B, W channel can be adjusted separately to achieve millions of changing colors.

Thanks to the built-in WiFi to RF module, a significant advantage of this WiFi controller is its compatibility with RF remotes and apps on iOS and Android systems directly, without the need for a WiFi-RF converter.

A free app is available (Easylighting) from the App Store and Google Play. Simply download it on your iOS or Android device, then search and connect your mobile device WLAN to the WiFi controller network.

### TECHNICAL DETAILS

<b>Input Voltage</b>	12-36 VDC
<b>Output Current</b>	4x8A
<b>Output Power</b>	4x(96-288)W
<b>Dimensions</b>	6.6"X2.3"X1.1"

<b>Frequency</b>	869.5/916.5/434mhz
<b>Certifications</b>	FCC / RoHS
<b>Color</b>	White
<b>Warranty</b>	5-Years limited warranty



## LED25W-24 (Power Supply) Optional for Wall Controller

Total Power: 25 Watts  
Input Voltage: 100-277 VAC  
UL Dry & Damp Location Rated  
IP66  
High Efficiency  
High Power Factor  
Analog Dimming (0-10V)  
Black Magic Thermal Advantage, Plastic Housing