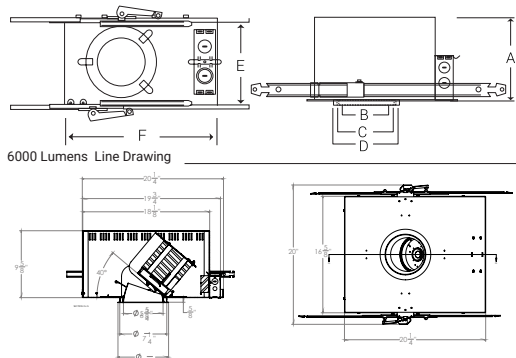


REFLECTOR/  
FLANGE COLORS



A 900L to 4000L: Height = 7-3/4"  
A 6000L: Height = 9- 5/8"  
B: Trim Aperture = 5-5/8"  
C: Cut-Out = 6-3/4"  
D: Trim Outside Dia = 7-1/4"  
E 900L to 4000L: Width = 10"  
E 6000L: Width = 16-5/8"  
F 900L to 4000L: Length = 12-1/2"  
F 6000L: Length = 20-1/4"

NOMINAL LUMENS	DELIVERED LUMENS	WATTAGE
6000	5979	61 W
4000	4926	49 W
3000	3979	38 W
2000	2252	20 W
1500	1785	15 W
1200	1398	12 W
900	1065	9 W
NOMINAL LUMENS (HP)	DELIVERED LUMENS (HP)	WATTAGE (HP)
1200	1422	10W
2000	2102	18W
3000	3259	28W

Based on 4000K, 90+CRI with semi-specular chrome reflector.  
Actual wattage may vary +/-5%

**FEATURES**

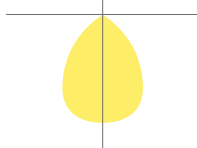
A highly sustainable and ultra-efficient architectural LED downlight that provides even, glare-free illumination. Available in a range of finishes, distributions, and lumen packages, it is ideally suited for use in corporate office space, hospitality, healthcare, commercial, academic, churches and retail.

**OPTICS AND REFLECTOR**

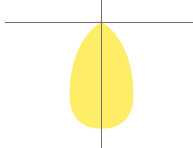
The reflector has a 45° visual cutoff, and is shipped standard with a Solite lens in a smooth frosted finish. Spun from 0.05" thick aluminum, with a 1-step anodized finish, and available in different colors or custom RAL finishes. Reflector flange options include self-flanged and white painted flange. Various distribution options are available, and all optics are field changeable.

LUMENS	900, 1200, 1500, 2000, 3000, 4000, 6000 (Custom lumen packages available)
CCT & DYNAMIC PLATFORMS	22K, 27K, 30K, 35K, 40K, 50K, Tunable White, Dims to Warm, RGB + White
CRI	90+ Standard, 98+ Optional
COLOR QUALITY	2 Step MacAdam Ellipse
DISTRIBUTIONS	WD (Wide Distribution), MD (Medium Distribution) and ND (Narrow Distribution)
TRIM OPTIONS	Downlight, Wall Wash, Double Wall Wash, Wet Location
REFLECTOR COLORS	CL (Semi-Specular Chrome), SHZ (Low Iridescent Satin Haze), WT (Wheat), W (White), MB (Black), BZ (Bronze) WAM(White Anti Microbial), Custom RAL
FLANGE COLORS	Self-Flanged WH (White), SCH (Semi-Specular Chrome), SHZ (Low Iridescent Satin Haze), BK (Black), DBZ (Dark Bronze)
DIMMING	0-10V Flicker Free 1% Dimming Standard (DIM10), LUTH, LUTFTB, ELDO10.1-LIN, ELDODMX.1, ELDODALI.1, DIMTR, BLE,POE,ELDO10-LOG,XSR, DIM10-AUX, DIM10-0-Off
EMERGENCY	10W - Up to 1000L Output 20W - Up to 2000L Output EMG-LED-G2-10W-SDT - Self Diagnostic (Consult Factory) GTD-UL924
LIFETIME	L70>72,000-hour reported lifetime for Standard models L70>50,000-hour reported lifetime for HP models
PHOTOMETRIC TESTS	In accordance with IES LM79-08, LM80 and TM-30, TM-21

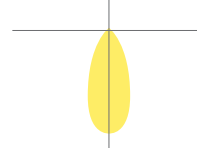
WD: Wide



MD: Medium



ND: Narrow



Reference IES files for additional distribution curve information.



**THERMAL MANAGEMENT SYSTEM**

Passive cooling Diecast Aluminum Heat Sink, LED light engine and driver are replaceable, upgradeable, and can be accessed from below the ceiling. The consistency in the quality of light is delivered with precision performance by the use of a unique locking mechanism that aligns the reflector with the light engine.

**MOUNTING FRAME & BRACKETS**

Has full adjustable aiming capability, allowing the double gimbal mechanism to rotate 360°, pivot 90°, and lock into place at any desired position.

**DRIVER ELECTRICAL INFORMATION**

The LED driver is rated for 50 to 60Hz at 120V/277V, also available in 347V input, produces less than 20%THD, has a power factor between 90% and 100%, and is thermally protected for additional safety. Junction box and Driver can be accessed from below the ceiling and above the ceiling. Junction Box is Listed for through branch circuit wiring.

**DIMMING & DRIVER INFORMATION**

**DIM10** - 0-10V dimming on either MVOLT 120, 277 or 347V. Dimmable down to 1% of initial lumens, standard.

**DIMTR** - Triac & Electronic low voltage dimming. Available in 120V, and up to 6000 lumens only.

**LUTH** - Lutron LDE1 Hi-Lume 1% Eco System LED driver with Soft-on, Fade to Black dimming technology.

**LUTFB** - Lutron PEQOE Hi-Lume Premier 1% Eco System LED Driver with Soft-on, Fade to Black dimming technology. Available on all luminaires up to 1500 lumens.

**ELDO10.1-LIN** - EldoLED SoloDrive 0-10V. Dimming down to 0.1%. Linear dimming curve.

**DALI** - DALI DT6, DT8 dimming down to 1%.

**ELDODMX** - EldoLED PowerDrive dimming down to 0.1%.

**BLE** - Luminaires may be controlled, grouped, scheduled or placed in scenes and or zones Via Cassambi Bluetooth 4.0 App.

**DIM10-0-OFF** - Program DIM10-to OFF with linear dimming curve 0.1%


**ELDO10-LOG** - ELDO10-LOG with logarithmic dimming curve.


**POE** - Power-over-Ethernet Depending on the PoE manufacturer selected, The Node will install the node in factory as either integral to the luminaire or as a remote module.


**XSR** - Xitanium SR Dimming

**DIM10-AUX** - 0-10V with Auxiliry power

**LED DYNAMIC PLATFORM OPTIONS**

 Tunable White with Smart White Technology utilizing the Lumenetix Platform allows you to color tune the luminaire via various controls. Create the perfect environment for the desired use of the space, while maintaining a CRI of 90+ across the tunable range of 8000 to 1650K. (Click here for more details)

 Dims to Warm with Smart Dimming Technology. At 100% full brightness the luminaire is at 3000K. When dimmed to 1%, the light transitions to 1800K, creating a warm ambiance within the space. (Click here for more details)

 RGB+White with Smart Hue Technology provides full color mixing of RGB and white colors. Utilizing the Lumenetix Platform allows you to choose from unlimited RGB color options, via various controls. Ideal for Circadian Rhythm applications or to create the perfect human centric environment. (Click here for more details)

**WARRANTY**

Five-year warranty for parts and components. (Labor not included)

**LISTINGS**

c-UL-us - Listed for Feed Through Wiring.

c-UL-us- Damp Location Listed.

U.S Patent No. - D685,118S

Energy Star and California Title 24 compliant

Optional Black color trim is not ENERGYSTAR certified and won't meet the requirement. 22K and 27K are not Energy Star Listed and won't meet the requirement. Please consult with Elite lighting to confirm Energy Star listing.

**BAA**- Buy American Act Compliant government procurement requirements under FAR, DFARS and DOT regulations.

Example: **HH6ADJ-LED-4000L-DIM10-MVOLT-MD-40K-90-HH6-6555-CL-WH**

SERIES	LUMENS	DRIVER	VOLTAGE	CCT	EMERGENCY	TRIM TYPE	REFLECTOR/FLANGE COLORS
HH6ADJ-LED	<input type="checkbox"/> 900L	<input type="checkbox"/> DIM10	<input type="checkbox"/> 120	<input type="checkbox"/> 22K	<input type="checkbox"/> EMG-LED-10W	<input type="checkbox"/> HH6ADJ-HL-6555	<input type="checkbox"/> CL-WH
	<input type="checkbox"/> 1200L	<input type="checkbox"/> DIMTR <sup>3 5</sup>	<input type="checkbox"/> 277	<input type="checkbox"/> 27K	<input type="checkbox"/> EMG-LED-20W		<input type="checkbox"/> CL-SCH
	<input type="checkbox"/> 1500L	<input type="checkbox"/> LUTH <sup>3</sup>	<input type="checkbox"/> MVOLT	<input type="checkbox"/> 30K	<input type="checkbox"/> GTD-UL924		<input type="checkbox"/> SHZ-WH
	<input type="checkbox"/> 2000L	<input type="checkbox"/> LUTFB <sup>4</sup>	<input type="checkbox"/> 347 (DIM10 only)	<input type="checkbox"/> 35K	Typical lumen output of the luminaire is up to 1000L with EMG-LED-10W option & 2000L with EMG-LED-20W option in emergency mode. Contact the factory for details. Remote mounted installation		<input type="checkbox"/> SHZ-SHZ
	<input type="checkbox"/> 3000L	<input type="checkbox"/> ELDO10-.1-LIN	<input type="checkbox"/> 40K	<input type="checkbox"/> 40K			<input type="checkbox"/> MB-WH*
	<input type="checkbox"/> 4000L <sup>1</sup>	<input type="checkbox"/> ELDODALI-.1	<input type="checkbox"/> 50K <sup>4</sup>				<input type="checkbox"/> MB-BK*
	<input type="checkbox"/> 5000L <sup>1 8</sup>	<input type="checkbox"/> ELDODMX-.1					<input type="checkbox"/> DBZ-DBZ
	<input type="checkbox"/> 6000L	<input type="checkbox"/> BLE					<input type="checkbox"/> RAL
		<input type="checkbox"/> POE	OPTICS	CRI	OTHER OPTIONS		<input type="checkbox"/> WH-WH
		<input type="checkbox"/> DIM10-0-OFF	<input type="checkbox"/> WD	<input type="checkbox"/> 90+	<input type="checkbox"/> CP (Chicago Plenum)		<input type="checkbox"/> WAM White Anti Macroblal
	<input type="checkbox"/> ELDO10-LOG	<input type="checkbox"/> MD	<input type="checkbox"/> 98+ <sup>5</sup>	<input type="checkbox"/> BAA			
	<input type="checkbox"/> XSR	<input type="checkbox"/> ND	<input type="checkbox"/> Xicato 95 <sup>7</sup>	<input type="checkbox"/> Slopped Ceiling Adopter			
	<input type="checkbox"/> DIM10-AUX			<input type="checkbox"/> HP (High Performance) <sup>6</sup>			
				<input type="checkbox"/> Remote LED Driver Mounting			

<sup>1</sup> Only 4000L and up can be selected with DIM10 option    <sup>2</sup> LUTH, ELDO10-.1, ELDODALI-.1, and ELDODMX-.1 are available in 120V and 277V    <sup>3</sup> DIMTR is available in 120V only  
<sup>4</sup> 50K series are available with 85+ CRI only    <sup>5</sup> 98+ CRI is available in 27K, 30K and 40K only    <sup>6</sup> LUTH and DIMTR Available for luminaires up to 3000L  
<sup>7</sup> LUTFB Available for luminaires up to 1500L    <sup>8</sup> 5000 Lumens is not energy Star certified    <sup>9</sup> 3000K, 3500K and 4000K based on 90CRI    -Reference last page for Control Options

**HH6ADJ-LED-4000L-DIM10-MVOLT-ND-40K-90-HH6-6555-CL-WH**

TEST NO.: **EL1218130**

INPUT WATTS: **46.2**

LUMENS: **4649**

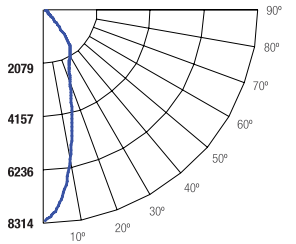
CRI: **90**

EFFICACY: **101**

CCT: **4000K**

SPACING CRITERIA: **0.60**

**Candle Power Distribution (Candelas)**



Cone of Light			
2	2077	1.1	1.2
4	519	2.2	2.4
6	231	3.4	3.6
8	130	4.5	4.8
10	83.1	5.6	6
12	57.7	6.7	7.1

BEAM DIA. MEASURED AT 50% OF NADIR F.C.

**Zonal Lumens Summary**

Zone	Lumens	%Lamp	%Fixt
0-20	1918.37	N.A.	41.30
0-30	3045.18	N.A.	65.50
0-40	4085.62	N.A.	87.90
0-60	4618.13	N.A.	99.30
0-80	4646.95	N.A.	100.00
0-90	4649.1	N.A.	100.00

**Luminance (Average candela/M<sup>2</sup>)**

Angle in Degrees	Average		
	0°	45°	90°
45	20041	53864	48600
55	6940	10524	10384
65	827	3528	5155
75	489	956	995
85	302	1986	2206

**Lumens Per Zone**

Zone	Lumens
0-10	680.61
10-20	1237.76
20-30	1126.81
30-40	1040.44
40-50	442.60
50-60	89.91
60-70	24.89
70-80	3.93
80-90	2.16

**Candela Tabulation**

θ	0
0	8307.41
5	7519.75
15	4249.07
25	2353.57
35	1799.30
45	258.74
55	72.68
65	6.38
75	2.31
85	0.48
90	0.19

**Coefficients of Utilization - Zonal Cavity Method**

Effective Floor Cavity Reflectance 0.20

RC	80%				70%				50%				30%				10%				0%			
	RW	70%	50%	30%	10%	70%	50%	30%	10%	50%	30%	10%	50%	30%	10%	50%	30%	10%	50%	30%	10%	0%		
ROOM CAVITY RATIO	0	119	119	119	119	116	116	116	116	111	111	111	106	106	106	102	102	102	102	102	102	100		
1	113	111	108	106	106	111	109	106	104	104	103	101	101	99	98	97	96	95	95	95	93			
2	108	103	99	95	106	101	97	94	98	95	92	95	92	90	92	90	88	87	87	87	87			
3	102	96	91	87	100	94	90	86	92	88	85	89	86	83	87	84	82	80	80	80	80			
4	97	89	84	80	95	88	83	79	86	82	78	84	80	77	82	79	76	75	75	75	75			
5	92	84	78	73	90	83	77	73	81	76	72	79	75	72	78	74	71	70	70	70	70			
6	87	79	73	68	86	78	72	68	76	71	68	75	70	67	74	70	67	65	65	65	65			
7	83	74	68	64	82	73	68	63	72	67	63	71	66	63	70	66	62	61	61	61	61			
8	79	70	64	60	78	69	63	59	68	63	59	67	62	59	66	62	59	57	57	57	57			
9	76	66	60	56	74	65	60	56	64	59	56	64	59	56	63	59	55	54	54	54	54			
10	72	63	57	53	71	62	57	53	61	56	53	60	56	53	60	55	52	51	51	51	51			

RC - Ceiling Cavity Reflectance

RW - Wall Reflectance

**HH6ADJ-LED-4000L-DIM10-MVOLT-MD-40K-90-HH6-6555-CL-WH**

TEST NO.: **EL1218126**

INPUT WATTS: **46.2**

LUMENS: **4393**

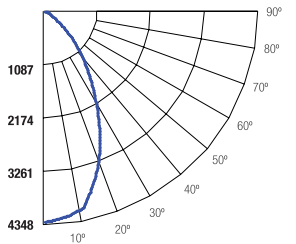
CRI: **90**

EFFICACY: **95**

CCT: **4000K**

SPACING CRITERIA: **0.92**

**Candle Power Distribution (Candelas)**



Cone of Light			
2	1075	2.2	2.2
4	269	4.4	4.5
6	119	6.6	6.7
8	67.2	8.9	9
10	43	11.1	11.2
12	29.9	13.3	13.5

BEAM DIA. MEASURED AT 50% OF NADIR F.C.

**Zonal Lumens Summary**

Zone	Lumens	%Lamp	%Fixt
0-20	1489.95	N.A.	33.90
0-30	2726.91	N.A.	62.10
0-40	3722.28	N.A.	84.70
0-60	4355.2	N.A.	99.10
0-80	4391.19	N.A.	100.00
0-90	4393.23	N.A.	100.00

**Luminance (Average candela/M<sup>2</sup>)**

Angle in Degrees	Average		
	0°	45°	90°
45	41339	57536	56466
55	9497	17462	17670
65	859	3690	8453
75	493	956	976
85	302	1835	2011

**Lumens Per Zone**

Zone	Lumens
0-10	407.28
10-20	1082.67
20-30	1236.96
30-40	995.37
40-50	505.62
50-60	127.30
60-70	31.99
70-80	4.00
80-90	2.04

**Candela Tabulation**

θ	0
0	4298.60
5	4257.74
15	3902.42
25	2658.34
35	1596.48
45	533.72
55	99.46
65	6.63
75	2.33
85	0.48
90	0.21

**Coefficients of Utilization - Zonal Cavity Method**

Effective Floor Cavity Reflectance 0.20

RC	80%				70%				50%				30%				10%				0%			
	RW	70%	50%	30%	10%	70%	50%	30%	10%	50%	30%	10%	50%	30%	10%	50%	30%	10%	50%	30%	10%	0%		
ROOM CAVITY RATIO	0	119	119	119	119	116	116	116	116	111	111	111	106	106	106	102	102	102	102	102	102	100		
1	113	110	108	105	111	108	106	104	104	102	100	100	99	97	97	96	95	95	95	95	93			
2	107	102	98	94	105	100	96	93	97	94	91	94	91	89	91	89	87	85	85	85	85			
3	101	94	89	85	99	93	88	84	90	86	83	88	84	81	85	83	80	78	78	78	78			
4	95	87	81	77	94	86	81	77	84	79	76	82	78	75	80	77	74	72	72	72	72			
5	90	81	75	70	89	80	74	70	78	73	69	77	72	69	75	71	68	67	67	67	67			
6	85	76	69	65	84	75	69	65	73	68	64	72	67	64	71	66	63	62	62	62	62			
7	81	71	64	60	79	70	64	60	69	63	59	68	63	59	66	62	59	57	57	57	57			
8	76	66	60	56	75	66	60	55	65	59	55	64	59	55	63	58	55	53	53	53	53			
9	73	62	56	52	71	62	56	52	61	55	52	60	55	51	59	54	51	50	50	50	50			
10	69	59	53	48	68	58	52	48	57	52	48	57	52	48	56	51	48	47	47	47	47			

RC - Ceiling Cavity Reflectance

RW - Wall Reflectance

**HH6ADJ-LED-4000L-DIM10-MVOLT-WD-40K-90-HH6-6555-CL-WH**

TEST NO.: **EL1218125**

INPUT WATTS: **46.3**

LUMENS: **4048**

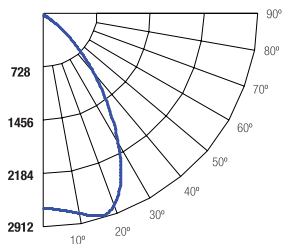
CRI: **90**

EFFICACY: **87**

CCT: **4000K**

SPACING CRITERIA: **1.10**

**Candle Power Distribution (Candelas)**



Cone of Light			
2	671	2.7	2.8
4	168	5.4	5.7
6	74.5	8.2	8.5
8	41.9	10.9	11.3
10	26.8	13.6	14.2
12	18.6	16.3	17

BEAM DIA. MEASURED AT 50% OF NADIR F.C.

**Zonal Lumens Summary**

Zone	Lumens	%Lamp	%Fixt
0-20	1061.46	N.A.	26.20
0-30	2201.23	N.A.	54.40
0-40	3195.67	N.A.	79.00
0-60	3993.78	N.A.	98.70
0-80	4045.66	N.A.	100.00
0-90	4047.62	N.A.	100.00

**Luminance (Average candela/M<sup>2</sup>)**

Angle in Degrees	Average		
	0°	45°	90°
45	67380	63901	57366
55	31338	23228	14462
65	14644	4217	861
75	969		

1- Luminaire will be shipped with Powerpacks pre-installed, ready to be integrated to designated control systems

2- Luminaire will be shipped with Sensors installed on the luminaire, allowing for individual luminaire control. Luminaires will be ready to be integrated with designated control systems

3- Luminaire will be shipped with Sensors to be remotely installed on the ceiling. Luminaires will be ready to be integrated with designated control systems

BRAND							
<b>CONTROL UNIT</b>	<input type="checkbox"/> NXFM-1R2D-0-UNV NX Fixture Module, Offset, 1 Relay, 2 0-10V Dimming Channels, 120-347VAC, Blue	<input type="checkbox"/> FCJS-010 Lutron Vive 0-10V Individual Pow Pak (Luminaire is shipped Vive Enabled) <sup>14</sup> <input type="checkbox"/> FCJS-ECO Lutron Vive Eco-system Pow Pak (Luminaire is shipped Vive Enabled) <input type="checkbox"/> A-WN-D01-RF-WH Athena wireless node (RF only) (White) <input type="checkbox"/> A-WN-D01-OCC-WH Athena wireless node with sensor (White)	<input type="checkbox"/> CU-4E-FMH Fixture Mount Control Unit <sup>15</sup>	<input type="checkbox"/> ZL027 -NOW Intellect Power Control Module <sup>16</sup>  <input type="checkbox"/> ZL027 -NOW Intellect Power Control Module <sup>16</sup>	<input type="checkbox"/> EN-WCM2-ZB-DR Wireless Control Module <sup>17</sup>  <input type="checkbox"/> EN-ALC-ZB-BK-DR Wireless Area Lighting Control Module <sup>17</sup>  <input type="checkbox"/> ZBHA-CLM-DIM-ENC Connected Lighting Module DIM <sup>17</sup>	<input type="checkbox"/> SBR -BS Xtanium SR Bridge <sup>18</sup>	<input type="checkbox"/> LMFC-011 ON/OFF/0-10V dimming fixture controller <sup>19</sup>
<b>INTEGRAT SENSOR</b>	N/A	N/A	N/A	N/A	N/A	N/A	N/A
<b>*WIRELESS OCCUPANCY SENSOR</b>	<input type="checkbox"/> NXSM2-SMI NX Slide Mount Indoor Sensor Module	N/A	N/A	N/A	N/A	N/A	<input type="checkbox"/> LMDC-100 Dual technology PIR Ceiling Mount Occupancy Sensor <sup>3</sup>
<b>*WIRELESS DAYLIGHT SENSOR</b>	<input type="checkbox"/> LUXSTATLS Luxstat Light Sensor for Luxstat Control Modules, 3 to 6000 FC	N/A	N/A	N/A	N/A	N/A	<input type="checkbox"/> LMLS-400 Single zone switching and dimming digital photosensor <sup>3</sup>
<b>*WIRELESS OCCUPANCY &amp; DAYLIGHT SENSOR</b>	<input type="checkbox"/> NXSM2T Indoor Ceiling Mount Sensor - OMNI	N/A	<input type="checkbox"/> SU-5E-IoT IoT Node Micro Sensor <sup>3</sup> <input type="checkbox"/> SU-5E-CL Connected Lighting Micro Sensor <sup>3</sup> <input type="checkbox"/> SU-5E-IL Independent Lighting / Enlighted One Micro Sensor <sup>3</sup> <input type="checkbox"/> SU-5S-H-(IoT/CL/IL) Surface Mount Sensor <sup>3</sup>  <b>(Must be specified with CU-4E-FMH Control Unit)</b>	<input type="checkbox"/> ZL00J -TOW Intellect Intelligent Fixture Control System <sup>3</sup>  <b>(Must be specified with ZL027 -NOW Control Unit)</b>	<input type="checkbox"/> EN-CLM-PIR-DD-ZB SensiLUM™ Wireless Integrated Sensor <input type="checkbox"/> EN-SCPPH-1500-ZB Wireless Passive Infrared Occupancy and Photo Sensors <sup>3</sup>  <b>(Must be specified with EN-WCM2-ZB-DR or EN-ALC-ZB-BK-DR Control Unit)</b>	<input type="checkbox"/> SNS212 EasyAir Daylight and Occupancy sensor	N/A
<b>ACCESORIES</b>	N/A	N/A	<input type="checkbox"/> TMC-SU-5E Tile Mount Carrier <input type="checkbox"/> CBL-5E-CU4-30N 30 inch Sensor Cable for CU-4 and IoT Ready™ drivers <input type="checkbox"/> CBL-5E-CU4-7F 7 foot Sensor Cable for CU-4 and IoT Ready™ drivers	N/A	N/A	N/A	N/A
<b>NOTES</b>	N/A	4- Luminaire will be compatible with Lutron LRF2-OCR2B-P-WH Ceiling mount 360° occupancy/vacancy sensor & LRF2-DCRB-WH Ceiling-mount daylight sensor. Sensors must be ordered through Lutron.	5- Luminaire will be compatible with ENLIGHTED SU-5E-IoT, SU-5E-CL, SU-5E-IL, SU-5S-H, Sensors.	6-Luminaire will be compatible with Leviton Intellect App & Keypad Room Controller	7-Luminaire will be compatible with EN-SCPPH-1500-ZB Wireless Passive Infrared Occupancy and Photo Sensors	8-Luminaire will be compatible with Philips field and wireless switch.	9-Luminaire will be compatible with DLM Room control system LMPB-100. DLM control system must be ordered through Legrand.