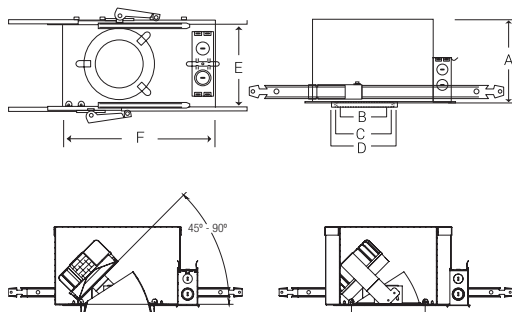




REFLECTOR/  
TRIM COLOR



A: Height = 7-3/4"  
B: Trim Aperture = 6"  
C: Cut-Out = 6-1/2"  
D: Trim Outside Dia = 7-7/8"  
E: Width = 10"  
F: Length = 12-1/2"

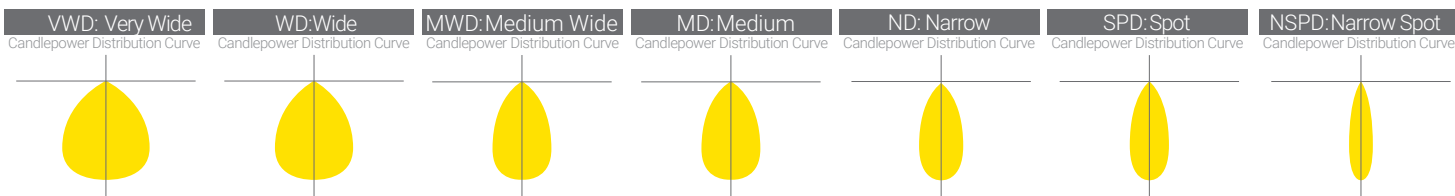
NOMINAL	ELITE	LED ENGIN
2500	30 W	-
2000	24 W	29 W
1500	18 W	-
1200	14 W	-
1100	-	15 W
900	10 W	-

Based on 4000K, 90CRI with semi-specular chrome reflector.  
Actual wattage may vary +/-5%

### DYNAMIC PLATFORM

**SMART WHITE** - Tunable White with Smart White technology allows the tuning of luminaires to mimic the natural color patterns throughout the day, enhancing interior office spaces, hospitality, and architectural elements. Tuning of intensity and color in classrooms enables a diversification in student activities, while the use of tunable white technology in healthcare stimulates circadian rhythm, accelerating the healing process. Complementing colors and textures in retail merchandising also has an impact on sales, utilizing the technology to adjust colors throughout the season. A CRI of 90+ is standard, and available on all three platforms. Elite Platform (50K-27K), LED Engin Platform (65K-18K)

<b>LUMENS</b>	Elite Platform: 900, 1200, 1500, 2000 & 2500 LED Engin Platform: 1100 & 2000
<b>TUNABLE WHITE PLATFORM</b>	High Performance: TWH-50K-27K (50K to 27K) : TWH-65K-27K (65K to 27K) LED Engin: TWH-LENGN-65K-18K (65K to 18K)
<b>CRI</b>	90+ Standard
<b>COLOR QUALITY</b>	2 Step MacAdam Ellipse
<b>DISTRIBUTIONS</b>	VWD, WD, MWD, MD, ND, SPD, NSPD
<b>TRIM OPTIONS</b>	Adjustable, Wall Wash
<b>REFLECTOR COLORS</b>	CL (Semi-Specular Chrome), SHZ (Low Iridescent Satin Haze), WH (White)
<b>FLANGE COLORS</b>	Self-Flanged SCH (Semi-Specular Chrome), SHZ (Low Iridescent Satin Haze), WH (White)
<b>DIMMING</b>	1% Dimming Standard, 0-10V (DIM10), DMX-512 DMX-RDM, BLE, LUTH, DALI, DLM
<b>EMERGENCY</b>	10W - Up to 1000L Output (Bodine BSL310) 20W - Up to 2000L Output (Bodine BSL20)
<b>LIFETIME</b>	L70 at 102,000 Hours
<b>PHOTOMETRIC TESTS</b>	In Accordance with IES LM79-08, LM80 and TM-30, TM-21



Reference IES files for additional distribution curve information.





## FEATURES

A highly sustainable and ultra-efficient architectural LED downlight that provides even, glare-free illumination. Available in a range of finishes, distributions, and lumen packages, it is ideally suited for use in corporate office space, hospitality, healthcare, commercial, academic, churches and retail.

## OPTICS AND REFLECTOR

The reflector has a 45° visual cutoff, and is shipped standard with a Solite lens in a smooth frosted finish. Spun from 0.05" thick aluminum, with a 1-step anodized finish, and available in different colors or custom RAL finishes. Reflector flange options include self-flanged and white painted flange. Various distribution options are available, and all optics are field changeable.

## THERMAL MANAGEMENT SYSTEM

Passive cooling Diecast Aluminum Heat Sink, LED light engine and driver are replaceable, upgradeable, and can be accessed from below the ceiling. The consistency in the quality of light is delivered with precision performance by the use of a unique locking mechanism that aligns the reflector with the light engine.

## MOUNTING FRAME & BRACKET

Has full adjustable aiming capability, allowing the double gimbal mechanism to rotate 360°, pivot 90°, and lock into place at any desired position.

## DRIVER ELECTRICAL INFORMATION

The LED driver is rated for 50 to 60Hz at 120V/277V input, produces less than 20%THD, has a power factor between 90% and 100%, and is thermally protected for additional safety. Junction box and Driver can be accessed from below the ceiling and above the ceiling. Junction Box is Listed for through branch circuit wiring.

## DIMMING & DRIVER INFORMATION

**SMART WHITE** High Performance platform with a tuning range of 5000K to 2700K (TWH-50K-27K).

Control via DIM10 (0-10V), ELITE-CONNECT 0-10V, LUTRON, DMX512-RDM, DALI

**LED Engin** platform with tuning range of 6500K to 1800K (TWH-LENGN-65K-18K).

Control via DIM10, ELITE-CONNECT 0 10V, DMX512, DMX-RDM, BLE, DALI Junction box and Driver can be accessed from below the ceiling and above the ceiling. Junction Box is Listed for through branch circuit wiring.

## WARRANTY

Five-year warranty for parts and components. (Labor not included)

## LISTINGS

c-UL-us - Listed for Feed Through Wiring.

All LED luminaires are rated and tested to LM-79 and LM-80 standards by an independent laboratory.

U.S Patent No. - D685,118S



Example: **HH6ADJ-LED-TWH-50K-27K-900L-DIM10-120-MD-90-HH6ADJ-6555-CL-WH**

SERIES	LUMENS	DRIVER	VOLTAGE		EMERGENCY	TRIM TYPE	REFLECTOR/TRIM- FINISH	WALL MOUNT CONTROLLER
HH6ADJ-LED-TWH-50K-27K HH6ADJ-LED-TWH-65K-27K	<input type="checkbox"/> 900L <input type="checkbox"/> 1200L <input type="checkbox"/> 1500L <input type="checkbox"/> 2000L <input type="checkbox"/> 2500L	<input type="checkbox"/> DIM10* <input type="checkbox"/> DMX-512 <input type="checkbox"/> DMX-RDM <input type="checkbox"/> DALI <input type="checkbox"/> LUTH <sup>2</sup>	<input type="checkbox"/> 120 <input type="checkbox"/> 277 <input type="checkbox"/> MVOLT		<input type="checkbox"/> EMG-LED-10W  <input type="checkbox"/> EMG-LED-20W  Typical lumen output of the luminaire is up to 1000L with EMG-LED-10W option & 2000L with EMG-LED-20W option in emergency mode. Contact the factory for details. Remote mounted installation	<input type="checkbox"/> HH6ADJ-6555	<input type="checkbox"/> CL-WH <input type="checkbox"/> CL-SCH <input type="checkbox"/> SHZ-WH <input type="checkbox"/> SHZ-SHZ <input type="checkbox"/> WT-WH <input type="checkbox"/> WH-WH <input type="checkbox"/> MB-WH <input type="checkbox"/> CL-MB	<input type="checkbox"/> EC-WC-TWH-HW-MVOLT <sup>1</sup>
HH6ADJ-LED-TWH-LENGN-65K-18K	<input type="checkbox"/> 1100L <input type="checkbox"/> 2000L	<input type="checkbox"/> DIM10 <input type="checkbox"/> DMX-512 <input type="checkbox"/> DMX-RDM	<input type="checkbox"/> DALI <input type="checkbox"/> BLE **	OPTICS	CRI			
				<input type="checkbox"/> VWD 70° <input type="checkbox"/> WD 60° <input type="checkbox"/> MWD 52° <input type="checkbox"/> MD 36° <input type="checkbox"/> ND 30° <input type="checkbox"/> SPD 24° <input type="checkbox"/> NSPD 15°	<input type="checkbox"/> 90+			

\* For 0-10V driver you must dedicate two control inputs, one for the Dimming Control and another for CCT Tuning.

\*\* For Details Consult Factory

<sup>1</sup> Compatible with Elite 0-10V Platform and LED Engin 0-10V Platform <sup>2</sup> (Lutron T Series 2 Channel Tunable White)



**HH6ADJ-LED-TWH-50K-27K-2000L-ND-HH6-6555-CL-WH**

INPUT WATTS: **24.8**

LUMENS: **2110**

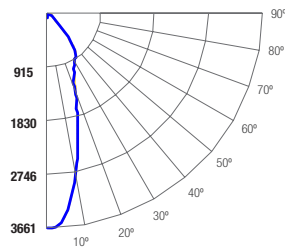
CRI: **90+**

EFFICACY: **85**

CCT: **4000K**

SPACING CRITERIA: **0.62**

**Candle Power Distribution (Candelas)**



**Zonal Lumens Summary**

Zone	Lumens	%Lamp	%Fixt
0-20	843.00	40.00	40.00
0-30	1355.88	64.30	64.30
0-40	1830.06	86.80	86.80
0-60	2090.36	99.10	99.10
0-80	2107.89	99.90	99.90
0-90	2109.51	100.00	100.00

**Luminance (Average candela/M²)**

Angle in Degrees	Average 0°	Average 45°	Average 90°
45	10370	22078	22113
55	3384	4790	5351
65	574	1608	2788
75	341	658	762
85	195	1791	1458

**Lumens Per Zone**

Zone	Lumens
0-10	294.08
10-20	548.92
20-30	512.88
30-40	474.18
40-50	212.44
50-60	47.87
60-70	14.41
70-80	3.12
80-90	1.62

**Candela Tabulation**

0	
0	3657.84
5	3428.30
15	1967.05
25	1044.02
35	807.61
45	133.88
55	35.44
65	4.43
75	1.61
85	0.31
90	0.08

**Coefficients of Utilization - Zonal Cavity Method**

Effective Floor Cavity Reflectance 0.20

Cone of Light		
4.0	229	2.4 ft.
8.0	57.2	4.7 ft.
12.0	25.4	7.1 ft.
16.0	14.3	9.5 ft.
20.0	9.14	11.9 ft.
24.0	6.35	14.2 ft.
Distance to Plane	Initial Footcandle at Nadir	Beam diameter

BEAM DIA. MEASURED AT 50% OF NADIR F.C.

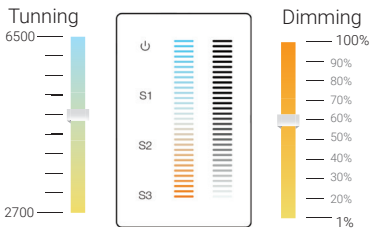

	RC	80%				70%				50%				30%				10%				0%		
		RW	70%	50%	30%	10%	70%	50%	30%	10%	50%	30%	10%	50%	30%	10%	50%	30%	10%	50%	30%	10%	0%	
ROOM CAVITY RATIO	0	0	119	119	119	119	119	116	116	116	116	116	114	111	111	111	106	102	102	102	102	100		
	1	1	113	113	111	108	106	111	108	106	106	104	104	102	101	101	99	98	97	96	95	93		
	2	2	108	103	98		95	105	101	97		94	98	94		92	95	92		90	92	90	88	86
	3	3	102	95	90		86	100	94	89		85	91	87		84	89	86		83	87	84	82	80
	4	4	97	89	83		79	95	88	82		78	86	81		77	84	80		77	82	78	76	74
	5	5	92	83	77		73	90	82	77		72	80	75		72	79	74		71	77	73	70	69
	6	6	87	78	72		67	85	77	71		67	76	70		67	74	70		66	73	69	66	64
	7	7	83	73	67		63	81	73	67		63	71	66		62	70	65		62	69	65	62	60
	8	8	79	69	63		59	77	68	63		59	67	62		58	66	62		58	65	61	58	56
	9	9	75	65	59		55	74	65	59		55	64	58		55	63	58		55	62	58	54	53
10	10	71	62	56		52	70	61	56		52	60	55		52	60	55		52	59	55	51	50	

RC - Ceiling Cavity Reflectance RW - Wall Reflectance



## CONTROL OPTIONS

With the integration of controls, Elite Lighting now offers its products with controls-ready performance that increases energy efficiency, smarter space planning, and the enhancement of safety and productivity in the workplace. By utilizing these controls, Elite Lighting luminaires enable your customer's facility to run smarter, with the use of an easily controlled system through any platform.

CONTROL PROTOCOLS	SMART WHITE	LEDENGIN
<p><b>ELITE-CONNECT</b> (EC-WC-TWH-HW-MVOLT) - Hard-wired, 0-10V, 120/277V wall mounted controller for CCT Tuning and Intensity Dimming through Simple Touch screen pad, provided by Elite Lighting. Programmable for up to 3-scenes, with a dimming range down to 1%. Applicable for office spaces, hospitality, educational, healthcare, and retail merchandising.</p> 	✓	✓
<p><b>DIM10</b> (0-10V 1% Dimming Standard) In order to Control the Color Tuning and dimming option with 0-10V driver you must dedicate two control inputs, one for the Dimming Control and another for CCT Tuning. Can be dimmed and tuned with 2 wall box dimmers and compatible with most control systems and/or daylight harvesting systems.</p> <p><b>DIM10-LUTRON</b> Compatible with Lutron GRAFIK Eye QS or GRAFIK Eye 3000 by using two GRX-TVI Lutron 0-10V Dimming interfaces; one to tune and another to control dimming. Also compatible with Lutron VIVE system by using two FCJS-010 PowPak or FCJS-ECO EcoSystem PowPak modules per fixture; one to tune and one to control dimming.</p> 	✓	✓
<p><b>DMX</b> (Available on Elite, LED Engin) - Compatible with Digital Multiplex Controller, Available with two options: DMX-512: Standard DMX Controller and DMX-RDM: DMX Controller with Remote Device Management.</p>	✓	✓
<p><b>LUTECO</b> Compatible with Lutron EcoSystem. Compatible with Lutron GRAFIK Eye EcoSystem, Lutron Energi Saver node EcoSystem, or Lutron Quantum systems.</p>	✓	N/A
<p><b>DALI</b> Compatible with Digital Addressable Lighting Interface, available with two options: DT6 and DT8.</p>	✓	✓