

# HH4SQPLIC

## 4" Architectural Square IC CFL Downlight

Architectural

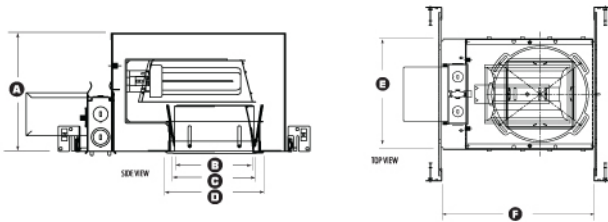
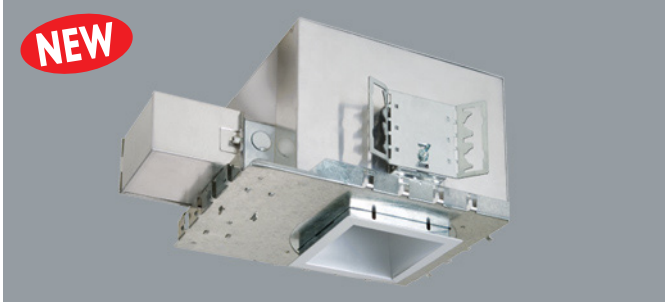
Catalog Number:

Project Name:

Type:

Note:

**MAXILUME**  
ARCHITECTURAL LIGHTING



**A. Height** = 7-1/8"

**B. Trim Aperture** = 4-1/2"

**C. Cut-out** = 5-1/8"

**D. Trim Outside Diameter** = 5-3/4"

**E. Width** = 10-1/8"

**F. Length** = 9-1/4"

**G. Max. Length** = 15-3/8"

### DESCRIPTION

**1. LAMP HOLDER** - Lamp holder effectively provides heat dissipation and ventilation. Unitized optics guarantees proper trim to housing installation. Tool-less installation adjustability from either outside the housing or inside the housing.

**2. MOUNTING BRACKET** - Constructed from 16-gauge steel. Can be installed with 3/4" or 1-1/2" lathing channel, 1/2" EMT, or with optional C-channel mounting bars (Part# BP31) ordered separately. Housing can be adjusted from the inside of the ceiling.

**3. RETAINING SPRINGS** - Precision tooled springs secure trim to mounting frame, for effortless and tool-less installation.

**4. JUNCTION BOX** - UL listed for through-branch circuit wiring and has four 1/2" KO's, one 3/4" KO and four Romex knockouts with pry-out slots and strain clamps. Junction Box is accessible from below, no tools required.

**5. BALLAST** - Ballast is accessible from below, no tools required. Ballast supplied is manufactured by Philips Advance, Universal Technologies or Lutron Electronics.

**6. MOUNTING FRAME** - Die-formed construction for maximum heat dissipation and rust protection.

**7. OUTER HOUSING** - Thermally protected specification grade compact CFL aluminum IC\_housing. For new construction where housing will be in direct contact with insulation.

### OPTICS

**8. REFLECTOR** - Self-flanged .050" aluminum reflector with low iridescent finish. Reflector provides 45-degree lamp-to-reflector image cutoff.

**9. LENS** - Choice of either tempered clear, tempered prismatic or tempered frosted lens fastened with two torsion springs for easy re-lamping. UL listed for wet or damp location.

### LISTING

UL listed for through-branch circuit wiring and damp locations. Wet location only with lens trims.

**SAME DAY**  
SHIPPING

PROUDLY  
ASSEMBLED in  
AMERICA

UL  
LISTED

LAMP BASE GUIDE (Sockets will accept all designated lamp bases listed.)						
13W	18W	26W	32W	42W	57W	70W
G24q-1 GX24q-1	G24q-2 GX24q-2	<b>G24q-3</b> <b>GX24q-3</b> GX24q-4	<b>GX24q-3</b> GX24q-4	GX24q-4	GX24q-5	GX24q-6

**HH4SQPLIC - ITEM SELECTOR:** (Please check the boxes below for the option desired)

WATTAGE	BALLAST	VOLTAGE	EMERGENCY OPTIONS	TRIM TYPE & DESCRIPTION	REFLECTOR
<input type="checkbox"/> 1X13 <input type="checkbox"/> 1X18 <input type="checkbox"/> 1X26 <input type="checkbox"/> 1X32	<input type="checkbox"/> (E) Electronic <input type="checkbox"/> (S) Energy Star <sup>2</sup>  <b>DIMMING</b> <input type="checkbox"/> Mark 7 <sup>3</sup> <input type="checkbox"/> Mark 10 <sup>4</sup> <input type="checkbox"/> Lut-E (EC3D) <sup>5</sup>	<input type="checkbox"/> MVOLT (120/277) <input type="checkbox"/> 120 <input type="checkbox"/> 277	<input type="checkbox"/> EMG 750 (750 Lumens) <sup>6</sup> <input type="checkbox"/> EMG 1300 (1300 Lumens) <sup>6</sup> <input type="checkbox"/> INTG 750 (750 Lumens) <sup>7</sup> <input type="checkbox"/> INTG 1300 (1300 Lumens) <sup>7</sup> <input type="checkbox"/> EMG-D-750 (750 Lumens) <sup>8</sup> <input type="checkbox"/> ESD-130 (1300 Lumens) <sup>13</sup> <input type="checkbox"/> ICE-1300 (1300 Lumens) <sup>10</sup>  <b>OTHER OPTIONS</b> <input type="checkbox"/> FUSE <sup>11</sup> <input type="checkbox"/> RIF <sup>12</sup> <input type="checkbox"/> BP31 (24" C-Channel Bar Hangers)	<input type="checkbox"/> 4601 <input type="checkbox"/> 4604 <input type="checkbox"/> 4607 <input type="checkbox"/> 4614 <input type="checkbox"/> 4615	<input type="checkbox"/> CL <input type="checkbox"/> SCH <sup>**</sup> <input type="checkbox"/> SHZ <sup>**</sup> <input type="checkbox"/> WT <input type="checkbox"/> W <input type="checkbox"/> MB

**1- (M) Magnetic** = Available in 9W, 13W, 18W & 26W fixtures only • **2- (S) Energy Star** = Available on selected fixtures only, please see list above • **3- MARK 7** = Not available in 9W, 13W, 57W, 70W • **4- MARK 10** = Not available in 9W, 13W, 57W, 70W, must specify voltage • **5- LUT-E (EC3D)** = Not available in 9W, 13W, 57W, 70W • **6- EMG** = Emergency battery pack w/ remote test switch • **7- INTG** = Emergency battery pack w/ integral (reflector) test switch • **8- EMG-D** = Emergency battery pack w/ remote test switch for damp location • **9- INTG-D** = Emergency battery pack w/ integral(reflector) test switch for damp location • **10- ICE** = Emergency battery pack w/ remote test switch operating between -18°C and 55°C • **11- FUSE** = Single slow-blow fuse • **12- RIF** = Radio interference filter • **13- ESD** = Emergency self-diagnostic

### Specifications:

HH4SQPLIC

WATT BALLAST VOLTAGE EMERGENCY OPTIONS TRIM TYPE REFLECTOR RING

Sample of Catalog Number: HH4SQPLIC-1X32-E-MVOLT-EMG750-4601-CL-WH

**MAXILUME**  
ARCHITECTURAL LIGHTING

A division of  
**Elite Lighting**

Submittal form is available @ [www.maxilume.com](http://www.maxilume.com)  
Tel: 323-888-1973 • Fax: 323-888-1977

Specifications and Dimensions  
subject to change without notice.

MAX-SPECS 2011-03-08

REFLECTOR	RING
CL Clear	WH Self-Flange White
SHZ Satin Haze	Standard on all trims
(Low Iridescent)	
WT Wheat	
MB Black	
W White	

\*For custom  
baffle, reflector,  
trim ring, glass  
color and lens  
options, please  
consult factory.

# 4" Square CFL Optics

Catalog Number:

Project Name:

Type:

Note:

**MAXILUME**  
ARCHITECTURAL LIGHTING

## 4601-CL - Reflector



### REFLECTOR FINISH:



CL

WT

MB

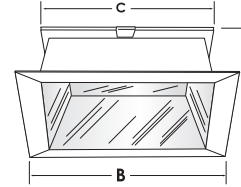
SHZ

W

### RING FINISH:



WH

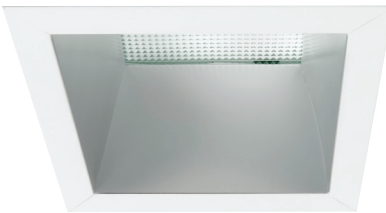


A = 3-1/8"

B = 5-3/4"

C = 4-5/8"

## 4604-CL - Reflector with Prismatic Glass Lens



### REFLECTOR FINISH:



CL

WT

MB

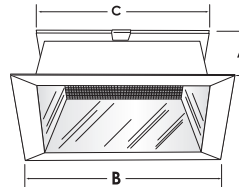
SHZ

W

### RING FINISH:



WH



FOR  
**WET**  
LOCATION

A = 3-1/8"

B = 5-3/4"

C = 4-5/8"

## 4607-CL - Wall Wash Reflector with Lens



### REFLECTOR FINISH:



CL

WT

MB

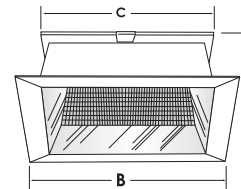
SHZ

W

### RING FINISH:



WH



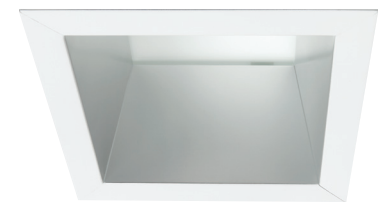
FOR  
**WET**  
LOCATION

A = 3-1/8"

B = 5-3/4"

C = 4-5/8"

## 4614-CL - Reflector with Frosted Glass Lens



### REFLECTOR FINISH:



CL

WT

MB

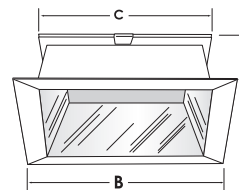
SHZ

W

### RING FINISH:



WH



FOR  
**WET**  
LOCATION

A = 3-1/8"

B = 5-3/4"

C = 4-5/8"

## 4615-CL - Reflector with Clear Tempered Glass Lens



### REFLECTOR FINISH:



CL

WT

MB

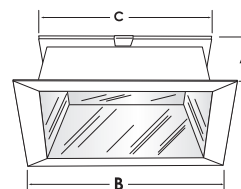
SHZ

W

### RING FINISH:



WH



FOR  
**WET**  
LOCATION

A = 3-1/8"

B = 5-3/4"

C = 4-5/8"