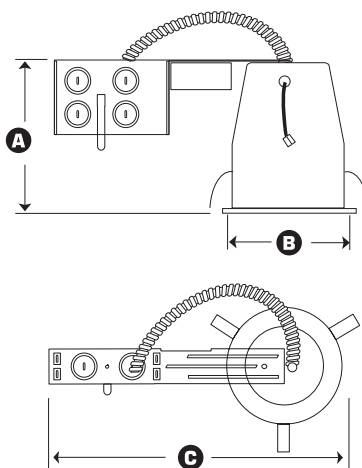


H-LED2-4R-WDM

4" ARCHITECTURAL REMODEL NON-IC LED DOWNLIGHT



- A** Height = 5-1/2"
- B** Cut-out = 4-3/8"
- C** Length = 11"

INPUT VOLT.	INPUT FREQ.	INPUT CUR.	THD	POWER FACTOR	INPUT POWER	LUMENS
120/277	50/60Hz	91mA/40mA	<20%	>0.9	11W(+/-5%)	600

DESCRIPTION - 4" LED dedicated Architectural Remodel NON-IC housing with the driver installed on the junction box. Designed for remodel construction installations and suitable for use in ceilings where insulation is kept 3 inches from housing. The excellent color rendering index of 85+ and realistic color temperature of 3,000 degrees Kelvin confirms that the MAXILUME LED luminaires are ideally suited for use in hospitality, health care, commercial, retail and residential applications. Producing over 600 usable lumens, the lighting is smooth and comfortable while using nearly 80% less energy than the equivalent 50W BR20/PAR20 or MR16 80% less and 50% less than the common 13W CFL. Plus, the eco-friendly Elite LED system features 70% lumen maintenance at 50,000hrs of life.

FEATURES - Greater light output than a 50W BR20/PAR20, MR16 80% & 13W CFL 13W CFL. Available in Spot and Flood distribution ideal for task lighting applications.



DURABILITY - Our die-cast system pulls the heat from the LED chip, allowing continued cool operation for years. Life tests have shown MAXILUME LED output will be maintained at 70% of initial lumens at 50,000hrs of operation.

DRIVER - Our superior design allows for installation in construction that requires the MAXILUME Air-Shut™ system. Our LED driver is rated for 50 to 60 Htz, produces less than 20% THD, has a power factor between 0.90 and 1.00 and is thermally protected for additional safety. MAXILUMEs driver is installed on the junction box cover, it is easily accessible for service from below the ceiling. Additionally, a 277V option is available.

REPEATABLE - Repeatability means quality. From our chip selection process, to our driver, to the thermal management, MAXILUME LED is engineered for quality. Our superior design allows for installation in construction that requires the MAXILUME Air-Shut™ system. All MAXILUME LED luminaires are rated at 90+ CRI and 3,000 degrees Kelvin, as rated and tested to LM-79 and LM-80 standards by a certified laboratory, and meets the California Title-24 compliance standards.

DIMMABLE - The MAXILUME LED system is fully dimmable down to 10% of initial light output with a Triac & Electronic Low Voltage dimmer when ordered with the following options (DIMTR-120). Fixtures can be shipped with a 0-10V (DIM-MVOLT) or a Lutron Hi-lume A series Driver which can be dimmed with Lutron Dimming Systems when ordered with the following options (LUTH-120, LUTH-277). A 277V NON-Dimming option is also available.

HOUSING - Die-formed high temperature painted 22 gauge steel deep-drawn for maximum heat dissipation and rust protection. Designed for remodel installations and is suitable for use in ceilings where insulation is kept 3 inches from housing. May be installed in 2" x 6" joist construction.

INSTALLATION - For fast and easy installation in existing plaster or mechanical ceilings the housing installs from below the ceiling. Four preinstalled spring clips with secure the housing firmly into ceiling to accommodate different ceiling thicknesses form 1/2" to 1-3/8.

JUNCTION BOX - UL Listed for through-branch circuit wiring, provided with eight 1/2" knockouts and four Romex knockouts with true pry-out slots and strain clamps.

THERMAL PROTECTION - Standard thermal protection device guards against improper installation and misuse of insulation material.

SMART DIM - Warm Dim with Smart Dim technology mimics traditional incandescent halogen lighting through dimming. Using Warm Dim, luminaires dim smoothly from 3000K to 1800K. Warm Dim shifts smoothly over the black body radiator curve as the light dims you move into the rich amber tones that encourages relaxation. It is ideal for hospitality, architectural as well as residential applications, all while maintaining high lumen output for the most stringent energy codes today's legislation requires. Warm Dim comes pared with high CRI of 90+ and superior lumen output.

OUR WORD - The MAXILUME LED lighting system carries a five-year carefree warranty for parts and components. (Labor not included.)

LISTING

c-UL-us - listed for Damp location.

c-UL-us - listed for feed Through Wiring.

LM79 / LM80

DIMMING INFORMATION

DIMTR (Triac & Electronic Low Voltage Dimming)

LUTH (Lutron® Hi-lume® Dimming)

DIM10 (0-10V Dimming)

Example: **H-LED2-4R-600L-DIMTR-120-AT/LED2-1401-600L-ND-WDM-30K-18K-W-WH**

HOUSING TYPE		600L SERIES					
TYPE	H-LED2-4R	600L-DIMTR-120		600L-LUTH-277		600L-DIM10-MVOLT	
		600L-LUTH-120		600L-LUTH-120		600L-DIM10-MVOLT	
TRIM	TRIM TYPE	LUMENS	OPTICS	CCT	CRI	FINISH	
	LED2-1401 (Baffle)	600L	ND (Narrow)	WDM-30K-18K (Warm Dimming)	90+	W-WH	P-BK
	LED2-1405 (Lensed Baffle)		MD (Medium)			P-WH	CP-CP
	LED2-1416 (Wall Wash)		MD (Medium)			SN-SN	BZ-BZ
	LED2-1496 (Square Baffle)		MD (Medium)				
	LED2-1402 (Reflector)	600L	ND (Narrow)	WDM-30K-18K (Warm Dimming)	90+	CL-WH	CL-CH
	LED2-1428 (Lensed Reflector)		MD (Medium)			W-WH	CP-CP
	LED2-1407 (Wall Wash)		MD (Medium)			BZ-BZ	SN-SN
	LED2-1462 (Shower Trim)		MD (Medium)			RG-WH	CL-SN
	LED2-1406 (Adjustable)	600L	ND (Narrow)	WDM-30K-18K (Warm Dimming)	90+	MB-WH	MB-BK
	LED2-1414 (Pinhole)		MD (Medium)			CL-CP	CL-SN
	LED2-1403 (Slot Aperture)		ND (Narrow)			CL-WH	CL-BK
			WD (Wide)			CL-BZ	CL-CH
	LED2-1401 (Baffle)	600L	ND (Narrow)	WDM-30K-18K (Warm Dimming)	90+	CP	SN
	LED2-1405 (Lensed Baffle)		MD (Medium)			WH	BK
	LED2-1416 (Wall Wash)		MD (Medium)			BZ	CH
	LED2-1496 (Square Baffle)		MD (Medium)				

BAFFLE WITH NARROW LIGHT DISTRIBUTION

LED2-1401-600L-ND-A-W-WH

Photometric Multiplier 1.0

LED2-1401-600L-ND-A-P-WH

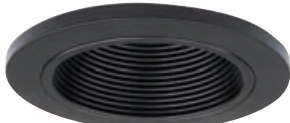
Photometric Multiplier .75

LED2-1401-600L-ND-A-SN-SN

Photometric Multiplier .92

LED2-1401-600L-ND-A-CP-CP

Photometric Multiplier .87

LED2-1401-600L-ND-A-P-BK

Photometric Multiplier .75

LED2-1401-600L-ND-A-BZ-BZ

Photometric Multiplier .85

Example: LED2-1401-600L-ND-30K-W-WH

TYPE (BAFFLE)	SERIES	OPTICS	(A) CCT	CRI	FINISH
LED2-1401	<input type="checkbox"/> 600L	<input type="checkbox"/> ND (Narrow)	<input type="checkbox"/> WDM-30K-18K (Warm Dimming)	<input type="checkbox"/> 90+	<input type="checkbox"/> W-WH <input type="checkbox"/> CP-CP <input type="checkbox"/> P-WH <input type="checkbox"/> BZ-BZ <input type="checkbox"/> SN-SN <input type="checkbox"/> P-BK

LENSED BAFFLE WITH MEDIUM LIGHT DISTRIBUTION

LED2-1405-600L-MD-A-W-WH

Photometric Multiplier 1.0

LED2-1405-600L-MD-A-P-WH

Photometric Multiplier .75

LED2-1405-600L-MD-A-SN-SN

Photometric Multiplier .92

LED2-1405-600L-MD-A-CP-CP

Photometric Multiplier .87


LED2-1405-600L-MD-A-P-BK

Photometric Multiplier .75

LED2-1405-600L-MD-A-BZ-BZ

Photometric Multiplier .85

Example: LED2-1405-600L-MD-30K-W-WH

TYPE (LENSED BAFFLE)	SERIES	OPTICS	(A) CCT	CRI	FINISH
LED2-1405 	<input type="checkbox"/> 600L	<input type="checkbox"/> MD (Medium)	<input type="checkbox"/> WDM-30K-18K (Warm Dimming)	<input type="checkbox"/> 90+	<input type="checkbox"/> W-WH <input type="checkbox"/> CP-CP <input type="checkbox"/> P-WH <input type="checkbox"/> BZ-BZ <input type="checkbox"/> SN-SN <input type="checkbox"/> P-BK

BAFFLE FINISH:

BZ
BRONZECP
COPPERWH
WHITEP
BLACKSN
SATIN NICKEL

TRIM/RING FINISH:

BK
BLACKWH
WHITECH
CHROMECP
COPPERBZ
BRONZEPB
POLISH BRASSSN
SATIN NICKEL

REFLECTOR WITH NARROW LIGHT DISTRIBUTION

LED2-1402-600L-ND-A-CL-WH



Photometric Multiplier 1.0

LED2-1402-600L-ND-A-BZ-BZ



Photometric Multiplier .87

LED2-1402-600L-ND-A-W-WH



Photometric Multiplier .95

LED2-1402-600L-ND-A-CL-CH



Photometric Multiplier 1.0

LED2-1402-600L-ND-A-CP-CP



Photometric Multiplier .90

LED2-1402-600L-ND-A-SN-SN



Photometric Multiplier .87

LED2-1402-600L-ND-A-CL-SN



Photometric Multiplier 1.0

LED2-1402-600L-ND-A-RG-WH



Photometric Multiplier .90

LED2-1402-600L-ND-A-MB-WH



Photometric Multiplier .77

LED2-1402-600L-ND-A-MB-BK



Photometric Multiplier .77

LED

4"

4 INCH ARCHITECTURAL LED OPTICS

Example: LED2-1402-600L-ND-30K-W-WH

TYPE (REFLECTOR)	SERIES	OPTICS	(A) CCT	CRI	FINISH
LED2-1402	<input type="checkbox"/> 600L	<input type="checkbox"/> ND (Narrow)	<input type="checkbox"/> WDM-30K-18K (Warm Dimming)	<input type="checkbox"/> 90+	<input type="checkbox"/> CP-WH <input type="checkbox"/> MB-WH <input type="checkbox"/> MB-BK <input type="checkbox"/> CL-CH <input type="checkbox"/> W-WH <input type="checkbox"/> CP-CP <input type="checkbox"/> BZ-BZ <input type="checkbox"/> CL-SN <input type="checkbox"/> RG-WH <input type="checkbox"/> SN-SN

LENSED REFLECTOR WITH MEDIUM LIGHT DISTRIBUTION

LED2-1428-600L-MD-A-CL-WH



Photometric Multiplier 1.0

LED2-1428-600L-MD-A-BZ-BZ



Photometric Multiplier .87

LED2-1428-600L-MD-A-W-WH



Photometric Multiplier .95

LED2-1428-600L-MD-A-CL-CH



Photometric Multiplier 1.0

LED2-1428-600L-MD-A-CP-CP



Photometric Multiplier .90

LED2-1428-600L-MD-A-SN-SN



Photometric Multiplier .87

LED2-1428-600L-MD-A-CL-SN



Photometric Multiplier 1.0

LED2-1428-600L-MD-A-RG-WH



Photometric Multiplier .90

LED2-1428-600L-MD-A-MB-WH




Photometric Multiplier .77

LED2-1428-600L-MD-A-MB-BK



Photometric Multiplier .77

Example: LED2-1428-600L-MD-30K-W-WH

TYPE (LENSED REFLECTOR)	SERIES	OPTICS	(A) CCT	CRI	FINISH
LED2-1428 	<input type="checkbox"/> 600L	<input type="checkbox"/> MD (Medium)	<input type="checkbox"/> WDM-30K-18K (Warm Dimming)	<input type="checkbox"/> 90+	<input type="checkbox"/> CP-WH <input type="checkbox"/> MB-WH <input type="checkbox"/> MB-BK <input type="checkbox"/> CL-CH <input type="checkbox"/> W-WH <input type="checkbox"/> CP-CP <input type="checkbox"/> BZ-BZ <input type="checkbox"/> CL-SN <input type="checkbox"/> RG-WH <input type="checkbox"/> SN-SN

PINHOLE WITH NARROW LIGHT DISTRIBUTION

LED2-1414-600L-ND- A -WH

Example: LED2-1414-600L-ND-30K-WH

TYPE	SERIES	OPTICS	(A) CCT	CRI	FINISH
LED2-1414 (PINHOLE)	<input type="checkbox"/> 600L	<input type="checkbox"/> ND (Narrow)	<input type="checkbox"/> WDM-30K-18K (Warm Dimming)	<input type="checkbox"/> 90+	<input type="checkbox"/> WH

ONE PIECE SLOT APERTURE

LED2-1403-600L- A -WH

Example: LED2-1403-600L-30K-WH

TYPE	SERIES	(A) CCT	CRI	FINISH
LED2-1403 (ONE PIECE SLOT APERTURE)	<input type="checkbox"/> 600L	<input type="checkbox"/> WDM-30K-18K (Warm Dimming)	<input type="checkbox"/> 90+	<input type="checkbox"/> WH

SMOOTH FROST SHOWER LITE WITH MEDIUM LIGHT DISTRIBUTION

LED2-1437-600L-MD- A - BFOR
WET
LOCATION

Example: LED2-1437-600L-MD-30K-CH

TYPE	SERIES	OPTICS	(A) CCT	CRI	(B) FINISH
LED2-1437 (SMOOTH FROST SHOWER LITE)	<input type="checkbox"/> 600L	<input type="checkbox"/> MD (Medium)	<input type="checkbox"/> WDM-30K-18K (Warm Dimming)	<input type="checkbox"/> 90+	<input type="checkbox"/> BZ <input type="checkbox"/> CH <input type="checkbox"/> WH <input type="checkbox"/> BK <input type="checkbox"/> CP <input type="checkbox"/> SN

SEMI-FROSTED SHOWER TRIM WITH MEDIUM LIGHT DISTRIBUTION

LED2-1462-600L-MD- A - BFOR
WET
LOCATION

Example: LED2-1462-600L-MD-30K-CL-WH

TYPE	SERIES	OPTICS	(A) CCT	CRI	(B) FINISH
LED2-1462 (SEMI-FROSTED SHOWER TRIM)	<input type="checkbox"/> 600L	<input type="checkbox"/> MD (Medium)	<input type="checkbox"/> WDM-30K-18K (Warm Dimming)	<input type="checkbox"/> 90+	<input type="checkbox"/> CL-BZ <input type="checkbox"/> CL-WH <input type="checkbox"/> CL-CP <input type="checkbox"/> CL-CH <input type="checkbox"/> CL-BK <input type="checkbox"/> CL-SN

BAFFLE WALL WASH WITH MEDIUM LIGHT DISTRIBUTION

LED2-1416-600L-MD- A - B

Example: LED2-1416-600L-MD-30K-W-W-WH

TYPE	SERIES	OPTICS	(A) CCT	CRI	(B) FINISH
LED2-1416 (BAFFLE WALL WASH)	<input type="checkbox"/> 600L	<input type="checkbox"/> MD (Medium)	<input type="checkbox"/> WDM-30K-18K (Warm Dimming)	<input type="checkbox"/> 90+	<input type="checkbox"/> W-W-WH <input type="checkbox"/> CP-CP-WH <input type="checkbox"/> P-W-WH <input type="checkbox"/> BZ-BZ-WH <input type="checkbox"/> SN-SN-WH <input type="checkbox"/> P-BK-WH

REFLECTOR WALL WASH WITH MEDIUM LIGHT DISTRIBUTION

LED2-1407-600L-MD- A - B

Example: LED2-1407-600L-MD-30K-W-W-WH

TYPE	SERIES	OPTICS	(A) CCT	CRI	(B) FINISH
LED2-1407 (REFLECTOR WALL WASH)	<input type="checkbox"/> 600L	<input type="checkbox"/> MD (Medium)	<input type="checkbox"/> WDM-30K-18K (Warm Dimming)	<input type="checkbox"/> 90+	<input type="checkbox"/> CP-W-WH <input type="checkbox"/> BZ-BZ-WH <input type="checkbox"/> MB-BK-WH <input type="checkbox"/> W-W-WH <input type="checkbox"/> RG-W-WH <input type="checkbox"/> MB-W-WH <input type="checkbox"/> RG-PB-WH <input type="checkbox"/> CL-CH-WH <input type="checkbox"/> CP-CP-WH <input type="checkbox"/> SN-SN-WH <input type="checkbox"/> CL-SN-WH

LED

4"

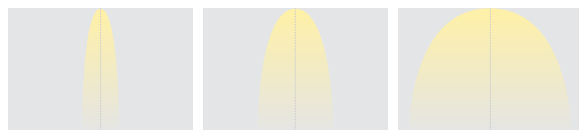
4 INCH ARCHITECTURAL LED OPTICS

SURFACE ADJUSTABLE (90° TILT, 359° ROTATION)



Description:

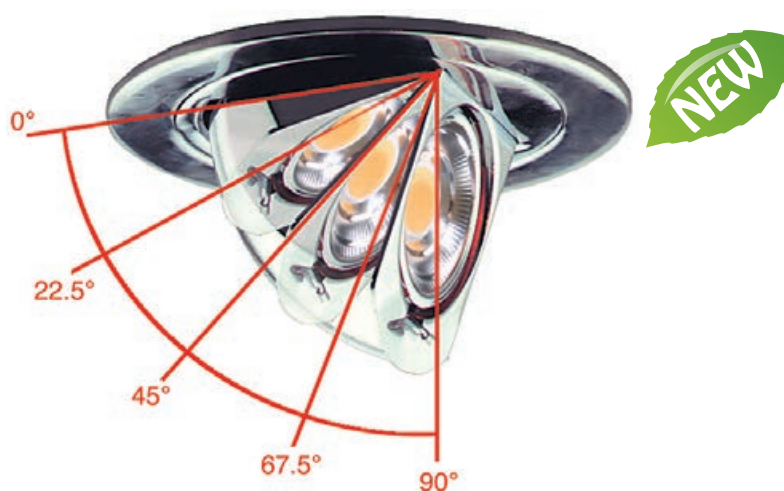
- Fixture adjusts 90° and rotates 359°.
- All die-cast construction is for functional and aesthetic use
- Can be used to accentuate an artwork or a particular object



ND: Narrow Distribution

MD: Medium Distribution

WD: Wide Distribution



LED2-1406-600L- A - B -BK



LED2-1406-600L- A - B -SN



LED2-1406-600L- A - B -CH



LED2-1406-600L- A - B -CP



LED2-1406-600L- A - B -BZ



LED2-1406-600L- A - B -WH

Example: LED2-1406-600L-ND-30K-WH

TYPE	600L SERIES	(A) OPTICS	(B) CCT	CRI	FINISH
LED2-1406 (ADJUSTABLE)	<input type="checkbox"/> 600L	<input type="checkbox"/> ND 25° <input type="checkbox"/> MD 36° <input type="checkbox"/> WD 60°	<input type="checkbox"/> WDM-30K-18K (Warm Dimming)	<input type="checkbox"/> 90+	<input type="checkbox"/> BK <input type="checkbox"/> SN <input type="checkbox"/> CH <input type="checkbox"/> CP <input type="checkbox"/> BZ <input type="checkbox"/> WH

SQUARE BAFFLE W/ SQUARE TRIM RING

Example: LED2-1496-600L-MD-30K-WH

TYPE	600L SERIES	OPTICS	CCT	CRI	FINISH
LED2-1496 (SQUARE BAFFLE)	<input type="checkbox"/> 600L	<input type="checkbox"/> MD (Medium)	<input type="checkbox"/> WDM-30K-18K (Warm Dimming)	<input type="checkbox"/> 90+	<input type="checkbox"/> W-WH <input type="checkbox"/> P-WH <input type="checkbox"/> P-BK <input type="checkbox"/> CP-CP <input type="checkbox"/> SN-SN <input type="checkbox"/> BZ-BZ

