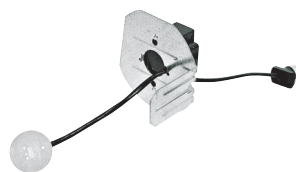




B3600
Magnetic Transformer
Converts line voltage (120V) to low voltage (12V)



B2600N
Magnetic Transformer mounted on socket bracket

B2600E
Electronic Transformer mounted on socket bracket
Converts line voltage (120V) to low voltage (12V)



BP7
Halogen Retrofit Kit
50W Halogen line voltage MR16 lamp included

BP22
Halogen retrofit socket only

BP28
50W Halogen line voltage MR16, 120V lamp only



BP13
MEDIUM BASE TO GU24



BP12
3/8" CONNECTOR FOR EU UNDERCABINET



BP91
BALLAST DISCONNECT



BP14
GU24 SOCKET



BP90
SOCKET FOR LD LED HOUSING & RL RETROFIT



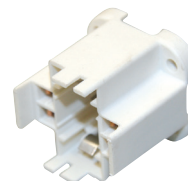
BP92
BALLAST DISCONNECT



BP16
Socket Extender - Allows use of a short neck lamp where long neck lamp is required



BP22
Halogen Retrofit Socket



BP27-13
FOR 13W 4 PIN

BP27-18
FOR 18W 4 PIN

BP27-26
FOR 26, 32, 42W 4 PIN

SOCKET W/ TERMINAL PROTECTOR



BP15
For 6" incandescent housings

BP25
For 5" incandescent housings

BP26
For 4" incandescent housings



BP9
MR16 Socket Lead 12V
MR16 socket with 24" lead



BP11
SWITCH FOR EU & EZU UNDERCABINET SERIES



BP148
24" HU-02, HU-03 series Pucklight extention

BD2
HU series Pucklight multi-connector



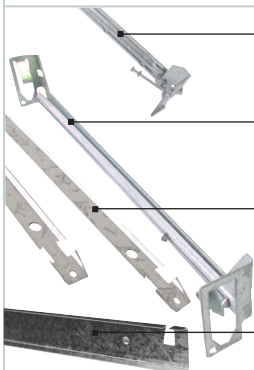
BP17 - Eyeball Adapter
For use with adjustable and eyeball trims



BP142 - EDISON BASE SCREW-IN ADAPTER FOR RL LED RETROFIT



GU24SA
SOCKET FOR LED RETROFIT TO GU24

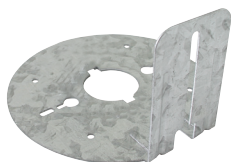


BP30
24" Fully adjustable bar hangers w/ nail

BP23
24" Fully adjustable bar hangers

BP24
30" Bar hanger for architectural housing

BP31
24" Bar hanger for C-channel for HH4SQPL fixtures



BP18
Socket bracket for 6" incandescent housings



BP19
Socket bracket for 4" incandescent housings

JUNCTION BOX COVER



BP20
For new construction housings

BP21
For remodel housings

BP29
For MAXILUME fixtures



GBC-E1
Junction box cover for MAXILUME fixtures