

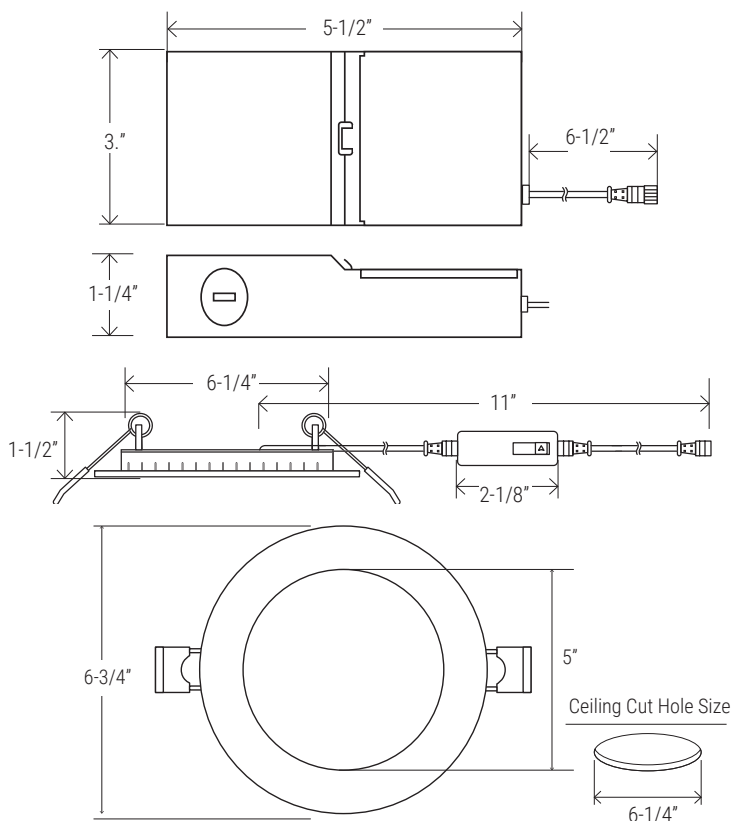
**EASY 5 COLORS  
SELECTOR**  
2700K • 3000K • 3500K • 4000K • 5000K



## 2 HOUR FIRE RATING

Tested to comply with UL 263, ASTM E119 & CAN ULC S101

### DIMENSION



NOMINAL LUMENS	DELIVERED LUMENS	WATTAGE
1100	1097	13W

Based on 4000K, 90+ CRI. Actual wattage may vary +/- 5%

### INSTALLATION

Cut hole in ceiling. Insert luminaire into opening by squeezing spring clips on both sides of luminaire. The width in ceiling needed for the driver to fit is 3".

You MUST seal all gaps between the ceiling and fixture with weatherproof silicone sealant. This deters moisture and water from damaging fixtures and other mechanical ceiling elements.

### FEATURES

2 Hours Fire Rated 6" round multi-CCT LED "Slim Disk" engineered for new construction, remodel, or retrofit to accommodate insulated or dropped ceilings. Easily access field-adjustable 5-Color SeleCCTor switch by lowering the luminaire from the opening. Recessed housing not required, especially with limited plenum applications. Remote driver allows easy installation and maintenance. Small aperture and shallow depth are ideal for unlimited applications.

LUMENS	1100
CCT	27K/30K/35K/40K/50K
CRI	90+
COLOR QUALITY	3-Step MacAdam Ellipse
CONSTRUCTION	Aluminum die-cast body and trim
TRIM OPTION	Round Flat Lens
TRIM COLORS	WH (White), BK (Black), BZ (Bronze), CP (Copper) and SN (Brushed Nickel)
DIMMING	DIMTR (Triac)
EMERGENCY	16W high voltage inverter (remote)
LIFETIME	L70 at 50,000 Hours
PHOTOMETRIC TESTS	In Accordance with IES LM79-08, LM80 and TM-30, TM-21

### FEATURES

- 2-Hour fire rating providing a reinforced and heat resistant steel casing
- Selectable color temperature: 27K, 30K, 35K, 40K & 50K
- Junction box with commercial grade driver included
- Triac Dimmable, Certified airtight, IC rated
- Easy installation with Heavy-Duty Commercial Grade Steel spring clip  
NO ADDITIONAL BOX REQUIRED
- Ambient operating temperature: -40°C (-40°F) to +40°C (+104°F).
- Aluminum Die Cast trim with powder paint coat preventing discoloring and rusting.
- ETL listed in USA & Canada. 2-HOUR FIRE RATING and complies with ASTM E119, UL 263. certified to CSA standard C22.2 No. 250.0-08
- 5-Year, no-compromise warranty.



## SLIM TRIM



## TRIM RINGS



**FS-RL675-RT-BK**  
(Black)



**FS-RL675-RT-BZ**  
(Bronze)



**FS-RL675-RT-BN**  
(Chrome)

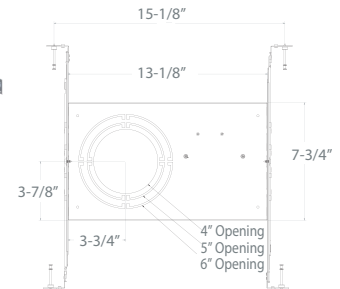


**FS-RL675-RT-CP**  
(Copper)

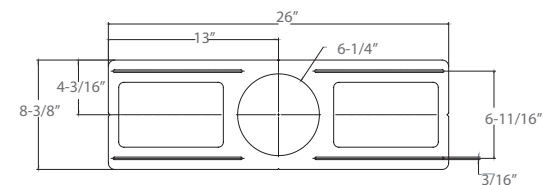
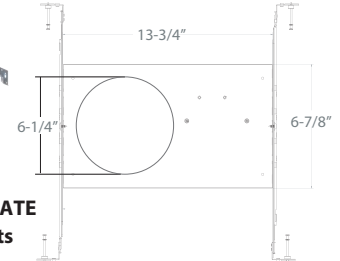
## ACCESSORIES



**RL-UNV-4/5/6**  
For use with: 4", 5", 6"  
Universal mounting plate



**AL-ACC-SLIM-6-F-ROUGHPLATE**  
For use with: 6" downlights



**RL-ACC-SLIM-6-ROUGHPLATE**  
Rough-in plate for use with 6" downlights

EXAMPLE:  
**FS-RL675-1100L-DIMTR-120-27K/30K/35K/40K/50K-90-WH**

TYPE	LUMEN	CCT	CRI	FINISH
FS-RL675	<input type="checkbox"/> 1100L-DIMTR-120	<input type="checkbox"/> 27K/30K/35K/40K/50K	<input type="checkbox"/> 90+	<input type="checkbox"/> WH - White

## FS-RL675-RT-BZ

### ACCESSORIES

- ☐ FS-RL675-RT-BZ - Bronze
- ☐ FS-RL675-RT-BK - Black
- ☐ FS-RL675-RT-BN - Brushed Nickel
- ☐ FS-RL675-RT-CP - Copper

## RL-ACC-SLIM-1-10F

### OPTIONS

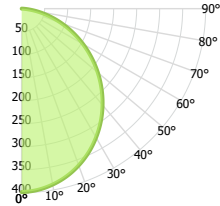
- ☐ RL-UNV-4/5/6 - Universal Mounting Plate for 4", 5" and 6"
- ☐ RL-ACC-SLIM-6-ROUGHPLATE - 6" Mounting Plate
- ☐ AL-ACC-SLIM-6-F-ROUGHPLATE - 6" Flanged Roughplate
- ☐ EMG-LED-G-16W-HV-FLEX - 16W high voltage inverter (remote)

**FS-RL675-1100L-DIMTR-120-27K-30K-35K-40K-50K-90-WH**

TEST NO.: **EL04262346**

INPUT WATTS: **13.9** LUMENS: **1097** EFFICACY: **79** BEAM ANGLE: **109** SPACING CRITERIA: **1.20**

**CANDELA DISTRIBUTION**



**CANDELA TABLE**

	0°	90°
0°	399	399
10°	388	393
20°	363	372
30°	323	337
40°	274	290
50°	216	234
60°	154	172
70°	92	108
80°	35	47
90°	0	0

**LUMINANCE (cd/sq.m)**

	0.00°	90.00°
0.00°	15181	15181
45.00°	13215	14174
55.00°	12295	13509
65.00°	11055	12599
75.00°	9102	11286
85.00°	4805	9430

**LUMENS PER ZONE**

ZONE	LUMENS
0° - 10°	40
10° - 20°	107
20° - 30°	161
30° - 40°	192
40° - 50°	196
50° - 60°	174
60° - 70°	131
70° - 80°	75
80° - 90°	21

**ZONAL LUMEN SUMMARY**

ZONE	UMENS	% LUMINAIRE
0° - 20°	147	13%
0° - 30°	308	28%
0° - 40°	500	46%
0° - 60°	870	79%
0° - 80°	1076	98%
0° - 90°	1097	100%

**CONE OF LIGHT**

MOUNTING HEIGHT	FC AT BEAM CENTER	BEAM DIA. 0°-180°	BEAM DIA. 90°-270°
6.0 ft	11.1 fc	16.7 ft	16.8 ft
8.0 ft	6.2 fc	22.3 ft	22.4 ft
10.0 ft	4.0 fc	27.8 ft	28.0 ft
12.0 ft	2.8 fc	33.4 ft	33.5 ft
14.0 ft	2.0 fc	39.0 ft	39.1 ft
16.0 ft	1.6 fc	44.5 ft	44.7 ft
18.0 ft	1.2 fc	50.1 ft	50.3 ft
20.0 ft	1.0 fc	55.7 ft	55.9 ft

**INDOOR COEFFICIENTS OF UTILIZATION**

pf	20%																		0%		
pc	80%				70%				50%				30%				10%				0%
pw	70%	50%	30%	10%	70%	50%	30%	10%	50%	30%	10%	50%	30%	10%	50%	30%	10%	0%			
0	119	119	119	119	116	116	116	116	111	111	111	106	106	106	102	102	102	100			
1	109	104	100	96	106	102	98	94	98	94	91	94	91	89	90	88	86	84			
2	99	91	84	78	96	89	83	77	85	80	75	82	78	74	79	75	72	70			
3	90	80	72	65	88	78	71	65	75	69	63	72	67	62	70	65	61	59			
4	83	71	62	55	80	69	61	55	67	60	54	65	58	53	62	57	53	50			
5	76	63	54	48	74	62	54	47	60	53	47	58	51	46	56	50	46	44			
6	70	57	48	42	68	56	48	41	54	47	41	53	46	41	51	45	40	38			
7	65	52	43	37	63	51	43	37	49	42	36	48	41	36	47	40	36	34			
8	61	47	39	33	59	47	38	33	45	38	33	44	37	32	43	37	32	30			
9	57	43	35	30	55	43	35	30	42	34	29	41	34	29	40	34	29	27			
10	53	40	32	27	52	40	32	27	39	32	27	38	31	27	37	31	26	25			