

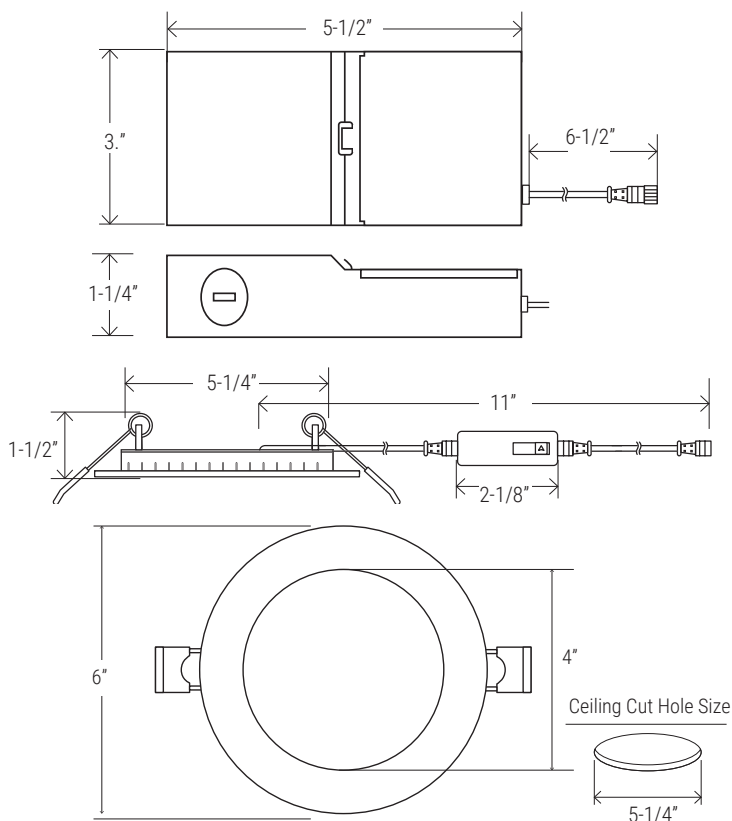
**EASY 5 COLORS
SELECTOR**
2700K • 3000K • 3500K • 4000K • 5000K



2 HOUR FIRE RATING

Tested to comply with UL 263, ASTM E119 & CAN ULC S101

DIMENSION



NOMINAL LUMENS	DELIVERED LUMENS	WATTAGE
1000	969	14W

Based on 4000K, 90+ CRI. Actual wattage may vary +/- 5%

INSTALLATION

Cut hole in ceiling. Insert luminaire into opening by squeezing spring clips on both sides of luminaire. The width in ceiling needed for the driver to fit is 3".

You MUST seal all gaps between the ceiling and fixture with weatherproof silicone sealant. This deters moisture and water from damaging fixtures and other mechanical ceiling elements.

FEATURES

2 Hours Fire Rated 5" round multi-CCT LED "Slim Disk" engineered for new construction, remodel, or retrofit to accommodate insulated or dropped ceilings. Easily access field-adjustable 5-Color SeleCCTor switch by lowering the luminaire from the opening. Recessed housing not required, especially with limited plenum applications. Remote driver allows easy installation and maintenance. Small aperture and shallow depth are ideal for unlimited applications.

LUMENS	1000
CCT	27K/30K/35K/40K/50K
CRI	90+
COLOR QUALITY	3-Step MacAdam Ellipse
CONSTRUCTION	Aluminum die-cast body and trim
TRIM OPTION	Round Flat Lens
TRIM COLORS	WH (White)
DIMMING	DIMTR (Triac)
EMERGENCY	16W high voltage inverter (remote)
LIFETIME	L70 at 50,000 Hours
PHOTOMETRIC TESTS	In Accordance with IES LM79-08, LM80 and TM-30, TM-21

FEATURES

- 2-Hour fire rating providing a reinforced and heat resistant steel casing
- Selectable color temperature: 27K, 30K, 35K, 40K & 50K
- Junction box with commercial grade driver included
- Triac Dimmable, Certified airtight, IC rated
- Easy installation with Heavy-Duty Commercial Grade Steel spring clip
NO ADDITIONAL BOX REQUIRED
- Ambient operating temperature: -40°C (-40°F) to +40°C (+104°F).
- Aluminum Die Cast trim with powder paint coat preventing discoloring and rusting.
- ETL listed in USA & Canada. 2-HOUR FIRE RATING and complies with ASTM E119, UL 263. certified to CSA standard C22.2 No. 250.0-08
- 5-Year, no-compromise warranty.

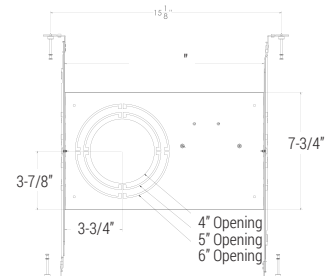
SLIM TRIM



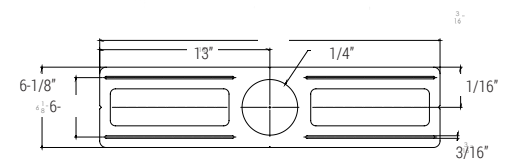
EXAMPLE:
FS-RL575-1000L-DIMTR-120-27K/30K/35K/40K/50K-90-WH

	TYPE	LUMEN	CCT	CRI	FINISH
	FS-RL575	1000L-DIMTR-120	27K/30K/35K/40K/50K	90+	WH - White

ACCESSORIES



RL-UNV-4/5/6
For use with: 4", 5", 6"
Universal mounting plate



RL-ACC-SLIM-5-ROUGHPLATE
Rough-in plate for use with 5" downlights

RL-ACC-SLIM-1-10F

OPTIONS

- ☐ **RL-UNV-4/5/6** - Universal Mounting Plate for 4", 5" and 6"
- ☐ **RL-ACC-SLIM-5-ROUGHPLATE** - 5" Mounting Plate
- ☐ **EMG-LED-G-16W-HV-FLEX** - 16W high voltage inverter (remote)

FS-RL575-1000L-DIMTR-120-27K-30K-35K-40K-50K-90-WH

TEST NO.: **EL08092313**

INPUT WATTS: **14.1**

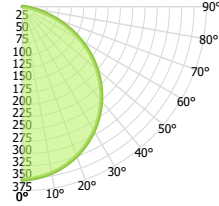
LUMENS: **969**

EFFICACY: **69**

BEAM ANGLE: **110**

SPACING CRITERIA: **1.23**

CANDELA DISTRIBUTION



CANDELA TABLE

	0°	90°
0°	353	356
10°	344	351
20°	324	333
30°	292	304
40°	250	264
50°	198	213
60°	138	154
70°	74	90
80°	20	32
90°	0	0

LUMINANCE (cd/sq.m)

	0.00°	90.00°
0.00°	19349	19500
45.00°	17478	18588
55.00°	16192	17644
65.00°	13834	15824
75.00°	9406	12552
85.00°	2654	7403

LUMENS PER ZONE

ZONE	LUMENS
0° - 10°	35
10° - 20°	95
20° - 30°	145
30° - 40°	174
40° - 50°	179
50° - 60°	158
60° - 70°	113
70° - 80°	56
80° - 90°	12

ZONAL LUMEN SUMMARY

ZONE	UMENS	% LUMINAIRE
0° - 20°	131	13%
0° - 30°	275	28%
0° - 40°	450	46%
0° - 60°	787	81%
0° - 80°	957	99%
0° - 90°	969	100%

CONE OF LIGHT

MOUNTING HEIGHT	FC AT BEAM CENTER	BEAM DIA. 0°-180°	BEAM DIA. 90°-270°
6.0 ft	9.8 fc	17.2 ft	17.3 ft
8.0 ft	5.5 fc	22.9 ft	23.0 ft
10.0 ft	3.5 fc	28.6 ft	28.8 ft
12.0 ft	2.5 fc	34.3 ft	34.5 ft
14.0 ft	1.8 fc	40.1 ft	40.3 ft
16.0 ft	1.4 fc	45.8 ft	46.1 ft
18.0 ft	1.1 fc	51.5 ft	51.8 ft
20.0 ft	0.9 fc	57.2 ft	57.6 ft

INDOOR COEFFICIENTS OF UTILIZATION

pf	20%																0%	
	pc	80%				70%				50%				30%				0%
pw	70%	50%	30%	10%	70%	50%	30%	10%	50%	30%	10%	50%	30%	10%	50%	30%	10%	0%
0	119	119	119	119	116	116	116	116	111	111	111	106	106	106	102	102	102	100
1	109	105	101	97	107	102	99	95	98	95	92	94	92	89	91	89	87	85
2	100	92	85	79	97	90	84	78	86	81	77	83	79	75	80	76	73	71
3	91	81	73	66	88	79	72	66	76	70	64	73	68	63	71	66	62	60
4	83	71	63	56	81	70	62	56	68	61	55	65	59	54	63	58	54	51
5	77	64	55	48	75	63	54	48	61	53	48	59	52	47	57	51	47	45
6	71	58	49	42	69	57	48	42	55	47	42	53	46	41	52	46	41	39
7	66	52	44	37	64	51	43	37	50	42	37	48	42	37	47	41	36	35
8	61	48	39	33	60	47	39	33	46	38	33	44	38	33	43	37	33	31
9	57	44	36	30	56	43	35	30	42	35	30	41	34	30	40	34	30	28
10	54	40	33	27	52	40	32	27	39	32	27	38	32	27	37	31	27	25