



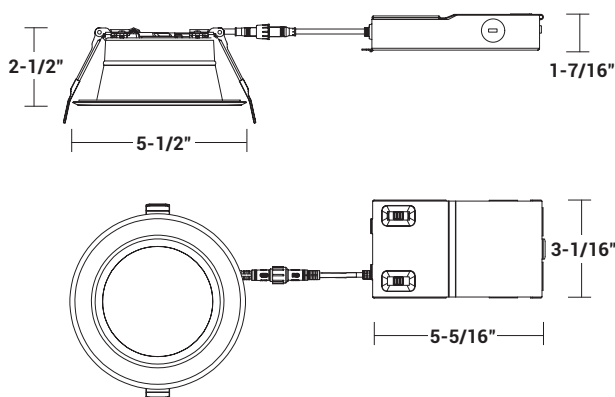
**MULTILUMEN
SELECTOR**

**EASY 5 COLORS
SELECTOR**
2700K • 3000K • 3500K • 4000K • 5000K

2-HOUR FIRE RATING

Tested to comply with UL 263, ASTM E119 & CAN ULC S101

DIMENSIONS



Recommended Hole Cut-out Size: 4-5/16"

NOMINAL LUMENS	DELIVERED LUMENS	WATTAGE
600L	761L	6W
800L	929L	8W
1000L	1145L	10W

Based on 4000K, 90+ CRI. Actual wattage may vary +/- 5%

INSTALLATION

Cut hole in ceiling. Insert luminaire into opening by squeezing spring clips on both sides of luminaire. The width in ceiling needed for the driver to fit is 3".

For wet location application, you **MUST** seal all gaps between the ceiling and fixture with weatherproof silicone sealant. This deters moisture and water from damaging fixtures and other mechanical ceiling elements.

FEATURES

SAFETY AND SOPHISTICATION

This 4", 2-hour fire rated downlight features a recessed design and regressed lens for a modern, low-glare look that capitalizes on both safety and aesthetics. 0-10V dimming, and selectable lumen and CCT options make for versatile application and are easily accessed by lowering the luminaire from the ceiling. Ideal for general lighting in recessed retrofit, remodel, and new construction applications in apartments, dormitories, corporate commercial, retail, and hospitality spaces.

Remote driver and small aperture allow for easy installation. Accommodates low plenum spaces and insulated and dropped ceilings. IC rated and no housing necessary.

LUMENS	600L/800L/1000L
CCT	27K/30K/35K/40K/50K
CRI	90+ Standard
COLOR QUALITY	4-Step MacAdam Ellipse
MOUNTING	Recessed
DIMMING	DIM10 - 0-10V Flicker-free 1% Dimming
BEAM ANGLE	Very Wide (VWD) at 85°
FINISH	White (WH) Standard
TRIM COLOR	White (W)
WORKING TEMP.	-20°C (-4°F) to 40°C (104°F)
EMERGENCY	15W & 16W High Voltage Inverter (Remote)
LIFETIME	L70 at 50,000 Hours
PHOTOMETRIC	In accordance with IES LM79-08, LM80 and TM-30, TM-21

- Can be installed in shallow plenum spaces
- May be installed in drywall or suspended ceilings
- Even illumination achieved with patent-pending optics and edge-lit LED technology
- Ideal where ceiling or top access is unavailable



OPTICS

Features a regressed polycarbonate lens and reflector for an optimal, glare-free beam.

A beam angle of 85° translates to a Very Wide indoor distribution (VWD), for broad reaching illumination.

Available in a lumen set of 600L/800L/1000L and with 5 selectable CCT options of 27K/30K/35K/40K/50K for selectable warm to cool color atmospheres.

CCT factory set to 5000K; lumen factory set to 1000L.

CONSTRUCTION

Housing and reflector made from a durable, lightweight spun iron. A reinforced and heat resistant steel casing ensures a 2-hour fire rating.

A slim profile and remote driver allows for use in low plenum spaces. Pre-installed torsion clips allow for easy and fast recessed installation; no recessed housing necessary.

Junction box with commercial grade driver included. Lumen and CCT switch located on driver.

Sealed for wet location use. Airtight, IC rated and ready for contact with insulation.

Available in a trademark red housing with a white trim finish.

MAINTENANCE

Fixture can be regularly and safely wiped down to ensure optimal fixture performance.

MOUNTING

Suitable for recessed mounting in retrofit, remodel, and new construction applications. Ideal where ceiling or top access is unavailable. Compatible with various rough plates for new construction use. 4 5/16" installation hole size.

OPTIONS & ACCESSORIES

Available to order with 15W or 16W emergency battery backup option.

Extension cable options:

- RL-ACC-SLIM-1-10F (10-ft)
- RL-ACC-SLIM-1-20F (20-ft)

Rough plate options:

- RL-UNV-4/5/6 for use with 4", 5", and 6" downlights
- AL-ACC-SLIM-4-F-ROUGHPLATE for use with 4" downlights
- RL-ACC-SLIM-4-ROUGHPLATE for use with 4" downlights
- RL-UNV-1/2/3/4/5/6/8/10 for use with 1", 2", 3", 4", 5", 6", 8" and 10" downlights

See order chart for details.

DRIVER & ELECTRICAL INFORMATION

Powered by high-quality constant-current power LED drivers which are rated for 50 to 60Hz at 120V-277V input, produce less than 20% THD, and have a power factor of .90 to 1.00.

DIMMING

DIM10 - 0-10V 1% Dimming at 120-277V.

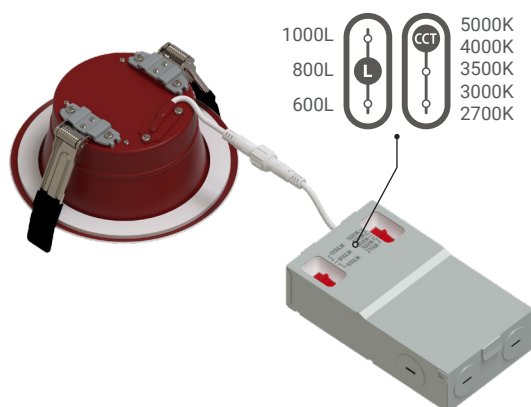
WARRANTY

5-year warranty for parts and components (labor not included).

LISTINGS

UL listed.
Energy Star certified.
Wet location suitable.
Title 24 and JA8 compliant.
Airtight, IC rated, and ready for contact with insulation.
2-hour fire rating complies with ASTM E119, UL263. Certified to CSA standard C22.2 No. 250.0-08.

MULTI-LUMEN & MULTI-CCT SWITCHES



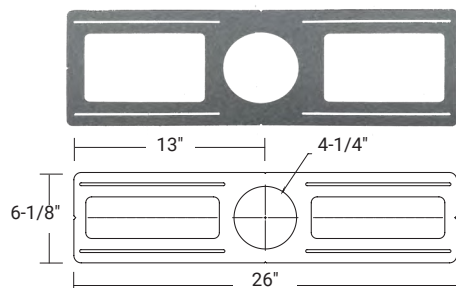
OPTION & ACCESSORIES



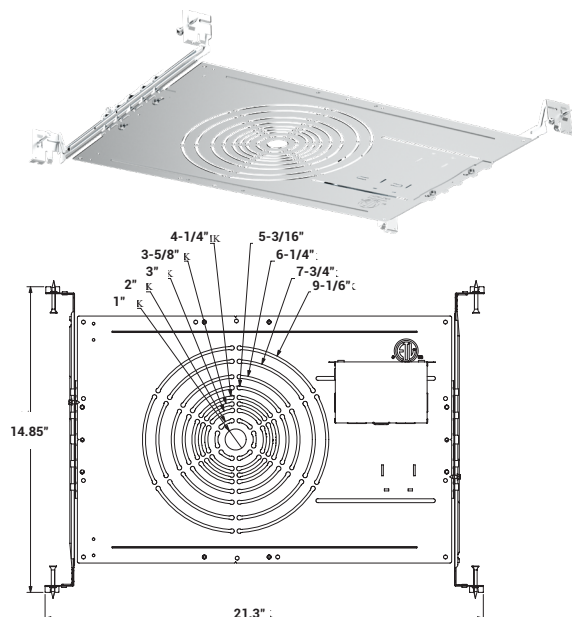
RL-ACC-SLIM-1-10F
10-ft long extension

RL-ACC-SLIM-1-20F
20-ft long extension

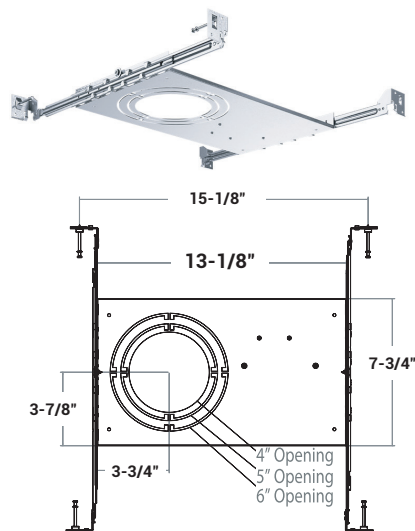
RL-ACC-SLIM-4-ROUGHPLATE
For 4" downlights



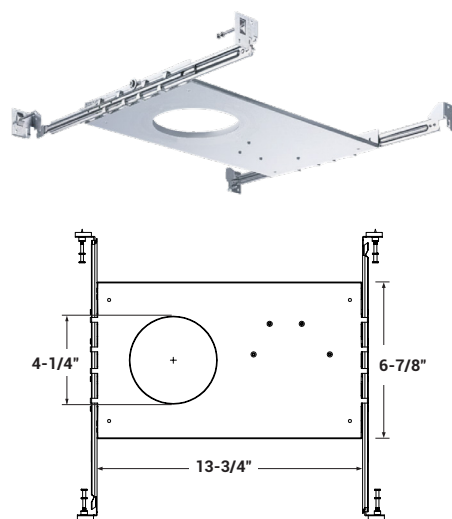
RL-UNV-1/2/3/4/5/6/8/10
For use with 1", 2", 3", 4", 5", 6", 8", and 10" downlights



RL-UNV-4/5/6
For use with 4", 5", and 6" downlights



AL-ACC-SLIM-4-ROUGHPLATE
For 4" downlights



Example: **FS-RL444-600L/800L/1000L-DIM10-MVOLT-27K/30K/35K/40K/50K-90-W-WH**

FS-RL444					
SERIES	LUMENS	DIMMING	CCT	FINISH	OPTION / ACCESSORIES
FS-RL444	600L/800L/1000L	DIM10/MVOLT - 0-10V	27K/30K/35K/40K/50K	W-WH - White	RL-ACC-SLIM-1-10F - 10-ft long extension RL-ACC-SLIM-1-20F - 20-ft long extension RL-UNV-4/5/6 - Universal Mounting Plate for 4", 5" and 6" AL-ACC-SLIM-4-F-ROUGHPLATE - 4" Flanged Roughplate RL-ACC-SLIM-4-ROUGHPLATE - 4" Mounting Plate RL-UNV-1/2/3/4/5/6/8/10 - Universal Mounting Plate for 1", 2", 3", 4", 5", 6", 8" and 10" O-EMG-LED-JBOX-15W-FLEX (Remote) - 15W Emergency Back up (Remote) O-EMG-LED-JBOX-16W-FLEX (Remote) - 16W Emergency Back up (Remote)

FS-RL444-600L-800L-1000L-DIM10-MVOLT-27K-30K-35K-40K-50K-90-W-WH(600L)

TEST NO.: **EL08122415**

INPUT WATTS: **6.2**

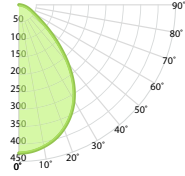
LUMENS: **761**

EFFICACY: **123**

BEAM ANGLE: **83**

SPACING CRITERIA: **1.12**

CANDELA DISTRIBUTION



CANDELA TABLE

	0°	90°
0°	426	426
10°	414	415
20°	378	383
30°	316	325
40°	219	234
50°	112	126
60°	51	57
70°	28	31
80°	11	13
90°	0	0

LUMINANCE (cd/sq.m)

	0.00°	90.00°
0.00°	64880	64880
45.00°	34853	38357
55.00°	19351	22136
65.00°	13725	15155
75.00°	11296	12962
85.00°	5975	9627

LUMENS PER ZONE

ZONE	LUMENS
0° - 10°	42
10° - 20°	112
20° - 30°	162
30° - 40°	172
40° - 50°	131
50° - 60°	73
60° - 70°	40
70° - 80°	22
80° - 90°	6

ZONAL LUMEN SUMMARY

ZONE	LUMENS	% LUMINAIRE
0° - 20°	155	20%
0° - 30°	317	42%
0° - 40°	489	64%
0° - 60°	693	91%
0° - 80°	755	99%
0° - 90°	761	100%

CONE OF LIGHT

MOUNTING HEIGHT	FC AT BEAM CENTER	BEAM DIA. 0° -180°	BEAM DIA. 90° -270°
6.0 ft	11.8 fc	10.5 ft	10.5 ft
8.0 ft	6.7 fc	14.0 ft	14.0 ft
10.0 ft	4.3 fc	17.5 ft	17.5 ft
12.0 ft	3.0 fc	21.1 ft	21.0 ft
14.0 ft	2.2 fc	24.6 ft	24.5 ft
16.0 ft	1.7 fc	28.1 ft	28.0 ft
18.0 ft	1.3 fc	31.6 ft	31.5 ft
20.0 ft	1.1 fc	35.1 ft	35.0 ft

INDOOR COEFFICIENTS OF UTILIZATION

pc	70%	50%	30%	10%	70%	50%	30%	10%	50%	30%	10%	50%	30%	10%	50%	30%	10%	0%
0	119	119	119	119	116	116	116	116	111	111	111	106	106	106	102	102	102	100
1	111	107	104	101	109	105	102	99	101	98	96	97	95	93	94	92	90	89
2	103	96	91	86	101	95	90	85	91	87	83	88	85	82	85	82	80	78
3	96	87	80	75	93	86	79	74	83	77	73	80	76	72	78	74	71	69
4	89	79	72	66	87	78	71	65	75	69	65	73	68	64	71	67	63	61
5	83	72	64	58	81	71	64	58	69	62	58	67	61	57	65	60	56	55
6	77	66	58	52	76	65	58	52	63	57	52	62	56	51	60	55	51	49
7	72	60	53	47	71	60	52	47	58	52	47	57	51	47	56	50	46	45
8	68	56	48	43	66	55	48	43	54	47	43	53	47	42	52	46	42	41
9	64	52	44	39	62	51	44	39	50	44	39	49	43	39	48	43	39	37
10	60	48	41	36	59	48	41	36	47	40	36	46	40	36	45	40	36	34

FS-RL444-600L-800L-1000L-DIM10-MVOLT-27K-30K-35K-40K-50K-90-W-WH(800L)

TEST NO.: **EL08122415**

INPUT WATTS: **7.6**

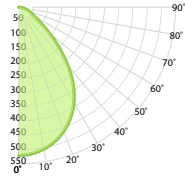
LUMENS: **929**

EFFICACY: **122**

BEAM ANGLE: **82**

SPACING CRITERIA: **1.12**

CANDELA DISTRIBUTION



CANDELA TABLE

	0°	90°
0°	521	521
10°	505	507
20°	462	469
30°	386	398
40°	267	286
50°	135	154
60°	62	69
70°	34	38
80°	13	16
90°	0	0

LUMINANCE (cd/sq.m)

	0.00°	90.00°
0.00°	79294	79294
45.00°	42483	46939
55.00°	23525	27051
65.00°	16726	18535
75.00°	13773	15868
85.00°	7268	11759

LUMENS PER ZONE

ZONE	LUMENS
0° - 10°	52
10° - 20°	137
20° - 30°	198
30° - 40°	210
40° - 50°	160
50° - 60°	89
60° - 70°	49
70° - 80°	27
80° - 90°	7

ZONAL LUMEN SUMMARY

ZONE	LUMENS	% LUMINAIRE
0° - 20°	189	20%
0° - 30°	387	42%
0° - 40°	597	64%
0° - 60°	846	91%
0° - 80°	922	99%
0° - 90°	929	100%

CONE OF LIGHT

MOUNTING HEIGHT	FC AT BEAM CENTER	BEAM DIA. 0° -180°	BEAM DIA. 90° -270°
6.0 ft	14.5 fc	10.5 ft	10.5 ft
8.0 ft	8.1 fc	14.0 ft	14.0 ft
10.0 ft	5.2 fc	17.5 ft	17.5 ft
12.0 ft	3.6 fc	21.0 ft	21.0 ft
14.0 ft	2.7 fc	24.6 ft	24.5 ft
16.0 ft	2.0 fc	28.1 ft	28.0 ft
18.0 ft	1.6 fc	31.6 ft	31.5 ft
20.0 ft	1.3 fc	35.1 ft	35.0 ft

INDOOR COEFFICIENTS OF UTILIZATION

pc	70%	50%	30%	10%	70%	50%	30%	10%	50%	30%	10%	50%	30%	10%	50%	30%	10%	0%
0	119	119	119	119	116	116	116	116	111	111	111	106	106	106	102	102	102	100
1	111	107	104	101	109	105	102	99	101	98	96	97	95	93	94	92	90	89
2	103	96	91	86	101	95	90	85	91	87	83	88	85	82	85	82	80	78
3	96	87	80	75	93	86	79	74	83	77	73	80	76	72	78	74	71	69
4	89	79	72	66	87	78	71	65	75	69	65	73	68	64	71	67	63	61
5	83	72	64	58	81	71	64	58	69	62	58	67	61	57	65	60	56	55
6	77	66	58	52	76	65	58	52	63	57	52	62	56	51	60	55	51	49
7	72	60	53	47	71	60	52	47	58	52	47	57	51	47	56	50	46	45
8	68	56	48	43	66	55	48	43	54	47	43	53	47	42	52	46	42	41
9	64	52	44	39	62	51	44	39	50	44	39	49	43	39	48	43	39	37
10	60	48	41	36	59	48	41	36	47	40	36	46	40	36	45	40	36	34

FS-RL444-600L-800L-1000L-DIM10-MVOLT-27K-30K-35K-40K-50K-90-W-WH(1000L)

TEST NO.: **EL08122415**

INPUT WATTS: **9.6**

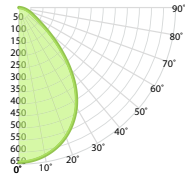
LUMENS: **1145**

EFFICACY: **119**

BEAM ANGLE: **82**

SPACING CRITERIA: **1.12**

CANDELA DISTRIBUTION



CANDELA TABLE

	0°	90°
0°	642	642
10°	623	626
20°	570	579
30°	476	491
40°	329	353
50°	166	189
60°	76	85
70°	42	47
80°	16	20
90°	0	0

LUMINANCE (cd/sq.m)

	0.00°	90.00°
0.00°	97790	97790
45.00°	52318	57917
55.00°	28872	33295
65.00°	20585	22862
75.00°	16951	19604
85.00°	8928	14502

LUMENS PER ZONE

ZONE	LUMENS
0° - 10°	64
10° - 20°	169
20° - 30°	244
30° - 40°	259
40° - 50°	197
50° - 60°	109
60° - 70°	60
70° - 80°	33
80° - 90°	9

ZONAL LUMEN SUMMARY

ZONE	LUMENS	% LUMINAIRE
0° - 20°	233	20%
0° - 30°	478	42%
0° - 40°	737	64%
0° - 60°	1043	91%
0° - 80°	1136	99%
0° - 90°	1145	100%

CONE OF LIGHT

MOUNTING HEIGHT	FC AT BEAM CENTER	BEAM DIA. 0° -180°	BEAM DIA. 90° -270°
6.0 ft	17.8 fc	10.5 ft	10.5 ft
8.0 ft	10.0 fc	14.0 ft	14.0 ft
10.0 ft	6.4 fc	17.5 ft	17.5 ft
12.0 ft	4.5 fc	21.0 ft	21.0 ft
14.0 ft	3.3 fc	24.5 ft	24.5 ft
16.0 ft	2.5 fc	28.0 ft	28.0 ft
18.0 ft	2.0 fc	31.5 ft	31.5 ft
20.0 ft	1.6 fc	35.1 ft	35.0 ft

INDOOR COEFFICIENTS OF UTILIZATION

pc pw	20%																		0%
	80%				70%				50%				30%				10%		0%
	70%	50%	30%	10%	70%	50%	30%	10%	50%	30%	10%	50%	30%	10%	50%	30%	10%	0%	
0	119	119	119	119	116	116	116	116	111	111	111	106	106	106	102	102	102	100	
1	111	107	104	101	109	105	102	99	101	98	96	97	95	93	94	92	90	89	
2	103	96	91	86	101	95	90	85	91	87	83	88	85	82	85	82	80	78	
3	96	87	80	75	93	86	79	74	83	77	73	80	76	72	78	74	71	69	
4	89	79	72	66	87	78	71	65	75	69	65	73	68	64	71	67	63	61	
5	83	72	64	58	81	71	64	58	69	62	58	67	61	57	65	60	57	55	
6	77	66	58	52	76	65	58	52	63	57	52	62	56	51	60	55	51	49	
7	72	60	53	47	71	60	52	47	58	52	47	57	51	47	56	50	46	45	
8	68	56	48	43	66	55	48	43	54	47	43	53	47	42	52	46	42	41	
9	64	52	44	39	62	51	44	39	50	44	39	49	43	39	48	43	39	37	
10	60	48	41	36	59	48	41	36	47	40	36	46	40	36	45	40	36	34	