

SERIES	DELIVERED LUMENS	WATTAGE
FG-P3-1	400	9W
FG-P3-2	400	9W

Based on 4000K, 90+ CRI. Actual wattage may vary +/- 5%

GROOVE 'PENDANT' SERIES

The FG-P3 Pendant Luminaire illuminates a soft glow from the bottom section of the fixture that allows you to elegantly illuminate your space without harsh barriers of focus.

This decorative piece FG-P3 can be installed individually or combined with other Groove system track luminaires to create the perfect design. For a dynamic design, it is recommended to use the FG-P3 as statement pieces between your choice of other linear, pendant, or recessed, or standard track luminaires.

SERIES	Groove - 'Pendant' series
SIZE	18", 22"
CCT	2700K, 3000K, 3500K, 4000K, 5000K
CRI	90+
COLOR QUALITY	2 Step MacAdam Ellipse
FINISH	● BR (Brass)
DIMMING	On / Off, DIM10 - (0-10V Dimming), DALI.1 - DALI 2, BLE - Bluetooth
LIFETIME	L70 at 60,000 Hours
PHOTOMETRIC TESTS	In Accordance with IES LM79-08, LM80 and TM-30, TM-21

FEATURES OF GROOVE FAMILY

The Groove 48V DC track system is available with multiple sleek, slender, and compact track heads that can be seamlessly mounted onto the track by simply clicking the track head's connector into place, allowing you to interchange one Groove-compatible luminaire for another. The Groove's intuitive click-in track makes it easy to install and switch luminaires, so the system can be updated to match any design or application, current or future.

The Groove track system is available in Trimless Recessed, Recessed Flanged, Ceiling/ Surface, and Suspended options, and can be integrated in most ceiling and wall applications. Utilize suspended and surface mounting options for surface such as wood, drywall or T-Bar ceilings.

The Groove offers a variety of connector accessories that enable users to tailor their designs with custom rectangular, square, or many other linear patterns. The T, X, L Corners and power connectors create dynamic designs that transcend flat surfaces including wall to ceiling, wrap corners, and more.

Drivers can be stowed within the system, hidden from view, or placed in a remote location. The single driver can power runs up to 65' long and 480 Watts. Please refer to driver spec sheets for more detailed information. Our team at Elite Lighting can help you organize the placement of drivers and complete systems.

Fixtures can be installed individually or combined with other Groove track system luminaires to create the perfect design. Multiple linear fixtures can be mounted next to each other on one track for continuous rays of illumination.

Available track head options are in-line linear, adjustable linear, spot, pendant, cylinder, and suspended. Many track heads are crafted with black interiors and TIR optics, providing precise beam control and reducing glare. Most track heads that are available with optics are field-changeable, with various lumen and distribution options. Additionally, some track heads can be overlaid with a single optical accessory, like the Linear Diffuser, Frosted Diffuser, and Honeycomb accessories. Some track heads can be used with spot-light, flood-light, snoot, and wall-wash accessories. (Please refer to the spec sheet on each individual track head for more detailed information.)

Subsequently, the system can be used for accent, task, and general illumination, making it ideal for a plethora of applications, such as galleries, museums, hospitality spaces, retail spaces, corporate offices, and residential spaces.

CONSTRUCTION

All track heads are engineered to have an extremely long lifespan and service period by using coolLED's Advanced Thermodynamic Design, which includes an extruded aluminum body, a hidden diecast heat sink, and a thermal management system.

LED MODULE PERFORMANCE

The Groove System's luminaires are equipped with 2-step McAdam Eclipse LEDs, which provide consistent color across all fixtures, and 90+CRI. The LEDs are available in a variety of kelvin temperature options.

DRIVERS

The Groove System is powered by constant voltage drivers with a rating of 50/60Hz at a 120/277V input and a 48V output. They produce less than 20% THD, have a 90% power factor, and are thermally protected for additional safety. Driver wattages range from 75W to 450W and can power up to 65 ft. of track. Groove drivers can be installed internally within the track or remotely mounted, and are available in 0-10V 1 % Dimming, Dali Dimming, or 120V On/ Off Non-Dimming Driver. Please see Groove track system spec sheets for a complete list of drivers and capabilities.

DIMMING INFORMATION

DIM10 - 0-10V dimming on either MVOLT 120, 277. Dimmable down to 1% of initial lumens, standard. Available in 75W, 100W, 150W., 240W.

DIMTR - Electronic low voltage dimming. Available in 120V.

DALI - DALI DT6 dimming down to 1% Available in 75W, 100W, 150W, 240W.

EldoLED PowerDrive dimming down to 0.1%. Please see the EldoLED website for wiring diagrams and a full list of compatible DMX and DALI control systems.

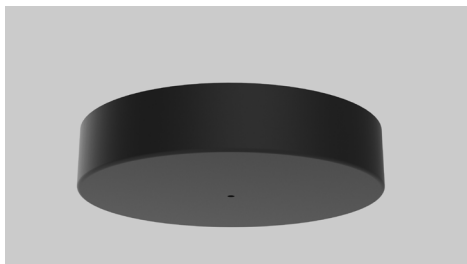
FINISH

Luminaires are available in a powder-coated black or white post-paint finish. They may also be issued in custom RAL colors upon request. Consult the factory to find out which custom colors can be accommodated.

WARRANTY

Five-year warranty for parts and components.

EXAMPLE:				
SERIES	CCT	CRI	FINISH	OPTION
FG-P3-1 18"	<input type="checkbox"/> 27K <input type="checkbox"/> 30K <input type="checkbox"/> 35K <input type="checkbox"/> 40K <input type="checkbox"/> 50K	<input type="checkbox"/> 90	<input type="checkbox"/> BR (Brass)	<input type="checkbox"/> 48V <input type="checkbox"/> 48V-BLE (Bluetooth) *Power supply must be ordered separately
FG-P3-2 22"				



FG-MP-180MA-DIM10

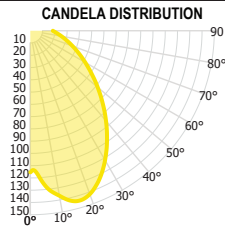
MONOPOINT - for FG-P3-1, FG-P3-2
canopy without track, with driver and dimmer

Diameter = 6.7", Height = 1.4"
DIM10 - (0-10V Dimming)
180mA
Black

FG-P3-1-40K-90

TEST NO.: **220062**

INPUT WATTS: **9.4** LUMENS: **395** EFFICACY: **42** BEAM ANGLE: **97** SPACING CRITERIA: **1.43**



CANDELA TABLE

	0°	90°
0°	115	115
10°	137	143
20°	142	140
30°	122	117
40°	96	91
50°	72	67
60°	52	48
70°	37	34
80°	26	24
90°	18	17

LUMINANCE (cd/sq.m)

	0.00°	90.00°
0.00°	3953903	3953903
45.00°	4038692	3780429
55.00°	3641446	3375625
65.00°	3540423	3247752
75.00°	4073347	3726510
85.00°	8491373	7760171

LUMENS PER ZONE

ZONE	LUMENS
0° - 10°	13
10° - 20°	40
20° - 30°	61
30° - 40°	67
40° - 50°	63
50° - 60°	54
60° - 70°	42
70° - 80°	32
80° - 90°	23

ZONAL LUMEN SUMMARY

ZONE	UMENS	% LUMINAIRE
0° - 20°	53	13%
0° - 30°	114	29%
0° - 40°	181	46%
0° - 60°	298	75%
0° - 80°	372	94%
0° - 90°	395	100%

CONE OF LIGHT

MOUNTING HEIGHT	FC AT BEAM CENTER	BEAM DIA. 0°-180°	BEAM DIA. 90°-270°
6.0 ft	3.2 fc	13.5 ft	13.6 ft
8.0 ft	1.8 fc	18.0 ft	18.2 ft
10.0 ft	1.2 fc	22.5 ft	22.7 ft
12.0 ft	0.8 fc	27.0 ft	27.3 ft
14.0 ft	0.6 fc	31.6 ft	31.8 ft
16.0 ft	0.5 fc	36.1 ft	36.4 ft
18.0 ft	0.4 fc	40.6 ft	40.9 ft
20.0 ft	0.3 fc	45.1 ft	45.5 ft

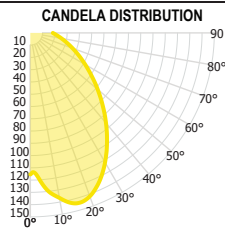
INDOOR COEFFICIENTS OF UTILIZATION

pf pc pw	20%															0%		
	80%				70%				50%			30%			10%			0%
	70%	50%	30%	10%	70%	50%	30%	10%	50%	30%	10%	50%	30%	10%	50%	30%	10%	0%
0	119	119	119	119	116	116	116	116	111	111	111	106	106	106	102	102	102	100
1	107	102	97	93	104	100	95	91	95	92	88	91	88	85	88	85	83	81
2	97	89	81	75	95	87	80	74	83	77	73	80	75	71	77	73	69	67
3	89	78	70	63	86	76	69	62	73	67	61	71	65	60	68	63	59	57
4	82	69	60	53	79	68	60	53	65	58	52	63	57	52	61	55	51	49
5	75	62	53	46	73	61	52	46	59	51	46	57	50	45	55	49	45	42
6	70	56	47	41	68	55	47	40	53	46	40	52	45	40	50	44	39	37
7	65	51	42	36	63	50	42	36	49	41	36	47	40	35	46	40	35	33
8	60	47	38	32	59	46	38	32	45	37	32	43	37	32	42	36	32	30
9	56	43	35	29	55	42	35	29	41	34	29	40	34	29	39	33	29	27
10	53	40	32	27	52	39	32	27	38	31	26	37	31	26	36	30	26	24

FG-P3-2-40K-90

TEST NO.: **220062**

INPUT WATTS: **9.4** LUMENS: **395** EFFICACY: **42** BEAM ANGLE: **97** SPACING CRITERIA: **1.43**



CANDELA TABLE

	0°	90°
0°	115	115
10°	137	143
20°	142	140
30°	122	117
40°	96	91
50°	72	67
60°	52	48
70°	37	34
80°	26	24
90°	18	17

LUMINANCE (cd/sq.m)

	0.00°	90.00°
0.00°	3953903	3953903
45.00°	4038692	3780429
55.00°	3641446	3375625
65.00°	3540423	3247752
75.00°	4073347	3726510
85.00°	8491373	7760171

LUMENS PER ZONE

ZONE	LUMENS
0° - 10°	13
10° - 20°	40
20° - 30°	61
30° - 40°	67
40° - 50°	63
50° - 60°	54
60° - 70°	42
70° - 80°	32
80° - 90°	23

ZONAL LUMEN SUMMARY

ZONE	UMENS	% LUMINAIRE
0° - 20°	53	13%
0° - 30°	114	29%
0° - 40°	181	46%
0° - 60°	298	75%
0° - 80°	372	94%
0° - 90°	395	100%

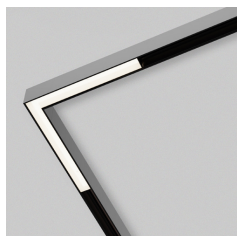
CONE OF LIGHT

MOUNTING HEIGHT	FC AT BEAM CENTER	BEAM DIA. 0°-180°	BEAM DIA. 90°-270°
6.0 ft	3.2 fc	13.5 ft	13.6 ft
8.0 ft	1.8 fc	18.0 ft	18.2 ft
10.0 ft	1.2 fc	22.5 ft	22.7 ft
12.0 ft	0.8 fc	27.0 ft	27.3 ft
14.0 ft	0.6 fc	31.6 ft	31.8 ft
16.0 ft	0.5 fc	36.1 ft	36.4 ft
18.0 ft	0.4 fc	40.6 ft	40.9 ft
20.0 ft	0.3 fc	45.1 ft	45.5 ft

INDOOR COEFFICIENTS OF UTILIZATION

pf	20%														0%
pc															0%
pw	70%	50%	30%	10%	70%	50%	30%	10%	50%	30%	10%	50%	30%	10%	0%
0	119	119	119	119	116	116	116	116	111	111	111	106	106	106	100
1	107	102	97	93	104	100	95	91	95	92	88	91	88	85	81
2	97	89	81	75	95	87	80	74	83	77	73	80	75	71	69
3	89	78	70	63	86	76	69	62	73	67	61	71	65	60	57
4	82	69	60	53	79	68	60	53	65	58	52	63	57	52	49
5	75	62	53	46	73	61	52	46	59	51	46	57	50	45	42
6	70	56	47	41	68	55	47	40	53	46	40	52	45	40	37
7	65	51	42	36	63	50	42	36	49	41	36	47	40	35	33
8	60	47	38	32	59	46	38	32	45	37	32	43	37	32	30
9	56	43	35	29	55	42	35	29	41	34	29	40	34	29	27
10	53	40	32	27	52	39	32	27	38	31	26	37	31	26	24

GROOVE TRACK LUMINAIRE OPTIONS:



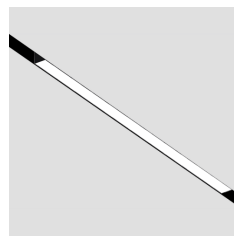
FG-L1R-C90
Seamless Linear Diffused



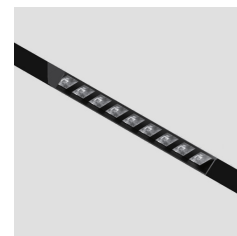
FG-L1R-CI
Seamless Linear Diffused



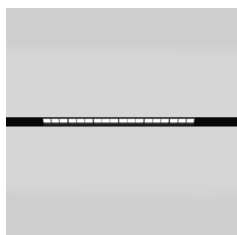
FG-L1R-CO
Seamless Linear Diffused



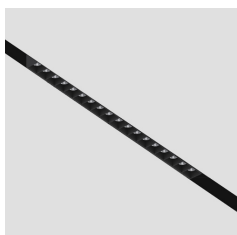
FG-L1R-8 | 16 | 32 | 48 | 64
Seamless Linear Diffused



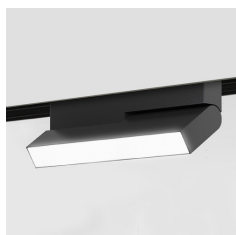
FG-L1-WW-3 | 8
Wall Wash



FG-L3R-16 | 32
Linear Louvered



FG-L4R-3 | 5 | 8 | 16 | 32
Linear Recessed Downlight & Task



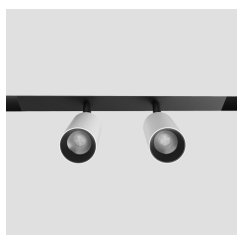
FG-L2A-3 | 5 | 8
Linear Diffused & Adjustable Light



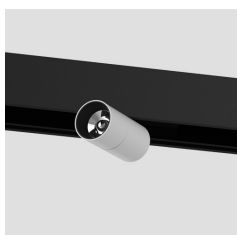
FG-L4A-3 | 5 | 8
Linear Adjustable Downlight, Task & Wall Grazer



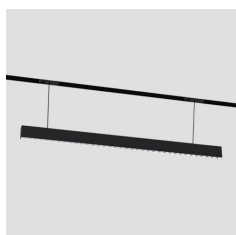
FG-T2-1 | 2 | 3 | FG-T3-1 | 2 | 3
Cylinder



FG-T2-4
Cylinder



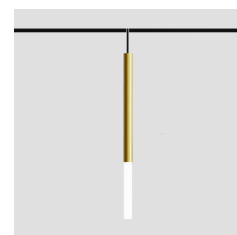
FG-T4-1 | 2 | 3
Beam Adjustable Cylinder



FG-L1P-32
Pendant Louvered



FG-P1-1 | 2
Pendant



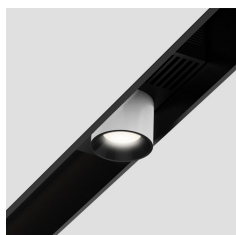
FG-P3-1 | 2
Pendant



FG-P4-1 | 2 | 3
Pendant Globe



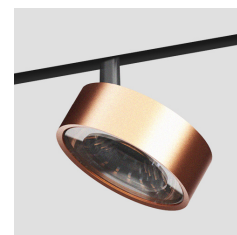
FG-P5-1
Globe



FG-T1-1
Recessed Track Light



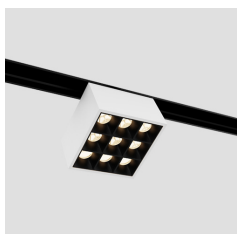
FG-T1-2
Recessed Track Light



FG-T5-1 | 2
Flat Round



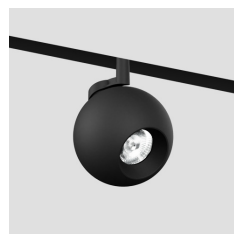
FG-T6-1 | 2
Flat Square



FG-T7-1 | 3
Square Track Light



FG-T7-2
Rectangle Track Light



FG-T8-1
Track Globe

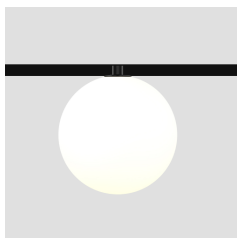


FG-T9-1
Track Globe

GROOVE TRACK LUMINAIRE OPTIONS:



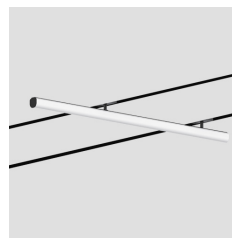
FG-T10-1
Track Downlight



FG-T11-1
Globe



FG-L2S-32 | 48
Surface Light



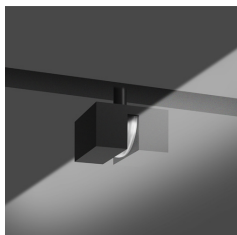
FG-L5S-32 | 48
Surface Light



FG-WL-1
Wall Light



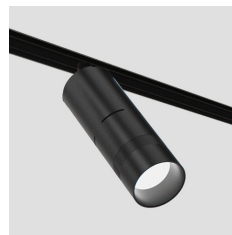
FG-WL-2
Wall Light



FG-LL-1
Line Light



FG-TPJ-1
Projector



FG-TPJ-2
Gobo Projector

GROOVE TRACK MOUNTING OPTIONS:



Trimless Recessed Mount



Surface, Ceiling Mount



Suspended Mount with Uplight



Suspended Mount