



LUMENS	900, 1200, 1500, 2000*	EMERGENCY <small>(REMOTE ONLY)</small>	10W - Up to 1000L Output (Bodine BSL310) 20W - Up to 2000L Output (Bodine BSL20)
CCT	2700K, 3000K, 3500K, 4000K, 5000K, Dims to Warm	MOUNTING	Suspended, Pendant
CRI	90+ Standard, 98+ Optional	FIXTURE FINISH	WH (White), BK (Black), BZ (Bronze), SI (Silver)
COLOR QUALITY	2 Step MacAdam Ellipse	MATERIAL COLORS	Refer to SoftSense Material Color Chart (p4)
DISTRIBUTIONS	NSPD (15°), SPD (24°), MD (36°), WD (60°)	LIFETIME	L70 at 102,000 Hours
DIMMING / DRIVERS	DIM10, DIMTR LUTH, LUTFB, ELD010-.1, ELD0DALI-.1, ELDODMX, DIMTR, BLE	PHOTOMETRIC TESTS	In accordance w/ IES LM79-08 and LM80, TM-30, TM-21

CUSHION 1

"Rhapsody" family consists of acoustic pendant or suspended fixtures. The luminaire inside this is our highly sustainable and ultra-efficient architectural FCR2-LED cylinder. With its seamless, glare-free glow, it transforms open spaces into harmonious sanctuaries, embraced by sound-absorbing materials.

Take your pick from our wide range of shapes that mesh perfectly with your space's vibe. We've also got them in loads of colors, so you can really jazz things up.



CONSTRUCTION

The cylinder body comes standard with a post-painted matte white finish and die-cast construction for maximum heat dissipation and rust protection.

THERMAL MANAGEMENT SYSTEM

This luminaire is engineered for an extremely long life with a unique thermal management system that involves the heat sink being attached inside of the extruded aluminum housing. The LED light engine is then attached to the extrusion heat sink and is easily replaceable and upgradeable.

SUPPORT CABLE / FEED

Standard 5-inch shallow ceiling mount canopy provided for direct installation with a 3-1/4" to 4" octagonal and square junction box. Suspended mount option is supplied with a 9 ft. field adjustable aircraft cable and power cord. Please consult factory for custom mounting and stem options.

ACOUSTIC MATERIAL - 9mm / 0.35" Thickness

Our panels come in 4' x 8' and are made from 100% polyethylene terephthalate (PET), with 50% post-consumer recycled material. PET is a moisture resistant green product with no added chemicals, binders, adhesives or dyes.

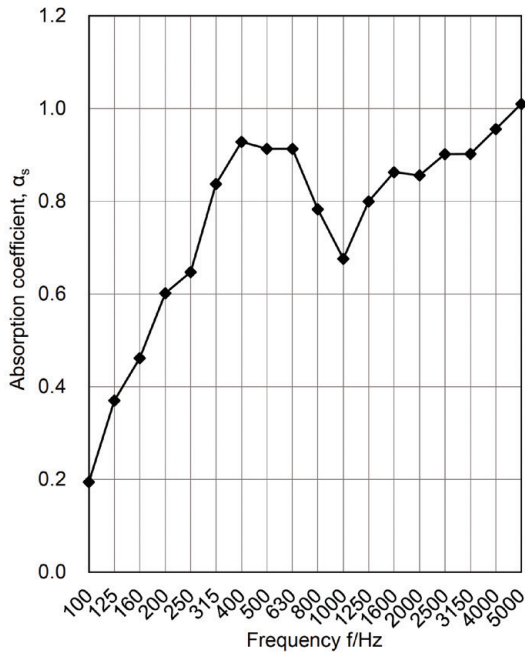
ACOUSTIC PANEL PERFORMANCE - 4' x 8' Panels

Acoustic performance of specific fixture / product will greatly vary based on mounting, installation, and configuration in a space.

Noise Reduction Coefficient (NRC) - 0.75

Weighted Sound Absorption Coefficient - $\alpha_w = 0.85$

NRC is a widely used standard to test sound absorption for 2-dimensional objects. It is the average absorption coefficient obtained from four key 1/3 octave frequencies: 250, 500, 1000, 2000 Hz.



LED DYNAMIC PLATFORM OPTIONS



Tunable White with Smart White Technology utilizing the Lumenetix Platform allows you to color tune the luminaire via various controls. Create the perfect environment for the desired use of the space, while maintaining a CRI of 90+ across the tunable range of 8000 to 1650K.



Dims to Warm with Smart Dimming Technology. At 100% full brightness the luminaire is at 3500K. When dimmed to 1%, the light transitions to 1800K, creating a warm ambiance within the space.



RGB + White with Smart Hue Technology provides full color mixing of RGB and white colors. Utilizing the Lumenetix Platform allows you to choose from unlimited RGB color options, via various controls. Ideal for Circadian Rhythm applications or to create the perfect human centric environment.

DIMMING & DRIVER INFORMATION

DIM10 - Flicker Free 1% Dimming Standard (DIM10) 0-10V dimming on either MVOLT, 120V, 277V, or 347V

DIMTR - Triac & Electronic low voltage dimming. Available in 120V and up to 3000 Lumens only

LUTH - Lutron LDE1 Hi-Lume Eco System. 1% dimming with Soft in Fade to Black dimming technology.

LUTFB - Lutron PEQ0 Hi-Lume Premier Eco System. 0.1% dimming with Soft in Fade to Black dimming technology. Available on all luminaires up to 20 W.

ELDODMX - EldoLED PowerDrive dimming down to 0.1%. Please see EldoLED website for wiring diagrams and a list of compatible DMX and DALI control systems.

ELDO10.1 - EldoLED SoloDrive 0-10V. Dimming down to 0.1%

DALI - DALI DT6, DT8 dimming down to 1%

BLE - Luminaires may be controlled, grouped, scheduled, or placed in scenes and/or zones via Cassambi Bluetooth 4.0 App.

EMERGENCY OPTIONS / CONTROLS

Remote test switch included. External battery operates LED load (EMG-STD-LED-10W) of up to 1000L and EMG-LED-20W up to 2000L.

OPERATING TEMPERATURE

Luminaire must be installed and operated in damp or dry locations where the ambient temperature ranges from -4°F to 104°F (-20°C to 40°C)

MAINTENANCE / CARE

Acoustic material can be cleaned w/ a clean, soft, lint-free cloth or a vacuum.

WARRANTY

Five-year warranty for parts and components. (Labor not included.)

LISTINGS

c-UL-us - Listed for Feed Through Wiring.

EMI/RFI emissions per **FCC 47CFR Part 18 Class B**

RoHS compliant

Photometric testing completed in accordance with **IES LM-79 and TM-30** standards with calculated Life Time: **L70 at 102,000 Hours**

Can be used for State of California **Title 24** high efficacy LED compliance under **JA8**, reference

ENERGY STAR® certified

UI Listed for Damp location

LUMEN DETAILS

Based on 3000K, 90+ CRI. Actual wattage may vary +/- 5%

INDIRECT

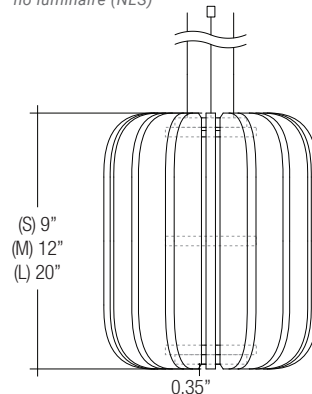
NOMINAL LUMENS	DELIVERED LUMENS	WATTS
1500	1758	18
1200	1405	13
900	1039	10

DIRECT

NOMINAL LUMENS	DELIVERED LUMENS	WATTS
2000*	2350	27
1500	1510	17
1200	1405	13
900	980	11

* 2000 Lumen option available in Direct Only

FCR2-RHAPSODY-SOFT								GRN	
SERIES	STYLE	SIZE	DISTRIBUTION	CANOPY TYPE	CANOPY COLOR	MOUNTING		COLOR	2 ND COLOR
FCR2-RHAPSODY-SOFT SoftSense (Acoustic) Suspended Architectural Cylinder	BLD1 - Blade 1 BLD2 - Blade 2 CSH1 - Cushion 1 CSH2 - Cushion 2 DIA1 - Diamond 1 DIA2 - Diamond 2 GEM1 - Gem 1 GEM2 - Gem 2 GEM3 - Gem 3 GEM4 - Gem 4 MLN1 - Melon 1 MLN2 - Melon 2 MLN3 - Melon 3 SKR1 - Skirt 1 SKR2 - Skirt 2 SQU1 - Squash 1 VTX1 - Vortex 1	S - Small M - Medium L - Large	NLS - No Light Source	FM - Flush Mount (standard) DC - Deep	WH - White (standard) BK - Black	SM - Suspended up to 10 ft. PM12 - Pendant Mount up to 12 in. PM16 - Pendant Mount up to 16 in. PM24 - Pendant Mount up to 24 in. PM36 - Pendant Mount up to 36 in. PM48 - Pendant Mount up to 48 in.		refer to SoftSense material color chart for options example: GRN - Green	2 ND color option will create a feature with alternating colors example: GRN-PUR - alternating Green and Turq



SERIES	STYLE	SIZE	DISTRIBUTION	LUMENS	OPTICS	ACCESSORY	DRIVER	VOLTAGE	CCT	CRI
FCR2-RHAPSODY-SOFT	BLD1 - Blade 1	S - Small	D - Direct	900L - 900 Lumens	D15 - NSPD 15°	[] - Standard	DIM10 - 0-10V Dimming	120 - 277V	27K - 2700K	90+
SoftSense Suspended Architectural Cylinder	BLD2 - Blade 2	M - Medium		1200L - 1200 Lumens	D24 - SPD 24°	FR - Frosted	DIMTR - Triac Dimming	120 - 277V	30K - 3000K	98+
	CSH1 - Cushion 1	L - Large		1500L - 1500 Lumens	D36 - MD 36°	SF - Soft Focus	LUTH - Lutron HiLum 1%	277 - 277 Volt	35K - 3500K	
	CSH2 - Cushion 2			2000L - 2000 Lumens	D60 - WD 60°	CL - Clear	LUTFB - Lutron HiLum 0.1%	347 - 347 Volt	40K - 4000K	
	DIA1 - Diamond 1					UV - UV Ultraviolet	ELD010-1 - EldoLED 0-10V		50K - 5000K	
	DIA2 - Diamond 2					SP - Spread	ELD00DALI-1 - EldoLED DALI Type 8			
	GEM1 - Gem 1					HC - Honey Comb	ELD00DMX - EldoLED DMX			
	GEM2 - Gem 2					LI - Linear	BLE - Wireless Bluetooth Control			
	GEM3 - Gem 3					SOL - Solite				
	GEM4 - Gem 4									
	MLN1 - Melon 1									
	MLN2 - Melon 2	SKR1 - Skirt 1								
	MLN3 - Melon 3	SKR2 - Skirt 2								
		SQU1 - Squash 1								
		VTX1 - Vortex 1								

Reference IES files for additional distribution curve information.

DISTRIBUTIONS - DIRECT

NARROW SPOT - 15°

SPOT - 24°

MEDIUM - 36°

WIDE - 60°

FINISH

WH - White
BK - Black
CUS - Custom

EMERGENCY*

0-EMG-LED-10W
0-EMG-LED-20W

CANOPY TYPE

FM - Flush Mount
DC - Deep
CC - Conduit

MOUNTING

SM - Suspended up to 9 ft.
PM12 - 12 in. Pendant
PM18 - 18 in. Pendant
PM24 - 24 in. Pendant
PM36 - 36 in. Pendant
PM48 - 48 in. Pendant

CORD

BK - White
WH - Black
CL - Clear

COLOR

GRN - Green

2ND COLOR

GRN - Green

* consult factory

1 347 Volt available with DIM10 only

2 DIMTR available in 120V only

3 5000K available with IES + CRI only

4 98+ CRI available in 2700K, 3000K, 4000K only

5 all drivers are integrated on 12" deep, recessed, and conduit canopies

6 LUTH, LUTFB, ELDO10-1, ELDO0DALI, ELDO0DMX, BLE are remote mount for flush canopy

7 98+ CRI available in 2700K, 3000K, 4000K only

8 all drivers are integrated on 12" deep, recessed, and conduit canopies

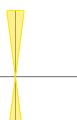
9 2nd color option will create a fixture with alternating colors. example: GRN/FLR - alternating Green and Fluor

FCR2-RHAPSODY-SOFT												proceed to "CCT"
SERIES	STYLE	SIZE	DISTRIBUTION	DIRECT LUMENS	OPTICS	ACCESSORY	INDIRECT LUMENS	OPTICS	NUMBER OF CIRCUITS	DRIVER	VOLTAGE	
FCR2-RHAPSODY-SOFT SoftSense (Acoustic) Suspended Architectural Cylinder	BLD1 - Blade 1	S - Small	UD - Indirect	D900L - 900 Lumens	D15 - NSPD 15°	[] - Standard	U900L - 900 Lumens	U15 - NSPD 15°	1C - 1 Circuit	DIM10 - 0-10V Dimming	120 - 277V ¹	
	BLD2 - Blade 2	M - Medium		D1200L - 1200 Lumens	D24 - SPD 24°	FR - Frosted	U1200L - 1200 Lumens	U24 - SPD 24°	Up / Down Lights Controlled Together	DIMTR - Triac Dimming	120 - 120 Volt	
	CSH1 - Cushion 1			D1500L - 1500 Lumens	D36 - MD 36°	SF - Soft Focus	U1500L - 1500 Lumens	U36 - MD 36°	2C - 2 Circuit	LUTH - Lutron HiLum 1%	277 - 277 Volt	
	CSH2 - Cushion 2				D60 - WD 60°	CL - Clear		U60 - WD 60°	Up / Down Lights Controlled Individually	LUTFB - Lutron HiLum 0.1%	347 - 347 Volt ¹	
	DI1 - Diamond 1					UV - UV Ultraviolet				ELD010-1 - EdoLED 0-10V		
	DI2 - Diamond 2					SP - Spread				ELD0DALI - EdoLED DALI Type 8		
	GEM1 - Gem 1					HC - Honey Comb				ELD00MX - EdoLED DMX		
	GEM2 - Gem 2					LI - Linear				BLE - Wireless Bluetooth Control		
	GEM3 - Gem 3					SOL - Solite						
	GEM4 - Gem 4											
	MLN1 - Melon 1											
	MLN2 - Melon 2	SKR1 - Skirt 1										
	MLN3 - Melon 3	SKR2 - Skirt 2										
		SQU1 - Squash 1										
		VTX1 - Vortex 1										

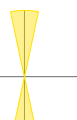
Reference IES files for additional distribution curve information.

DISTRIBUTIONS - DIRECT / INDIRECT


NARROW SPOT - 15°




SPOT - 24°



MEDIUM - 36°



WIDE - 60°



CCT	CRI	FINISH	EMERGENCY*	CANOPY TYPE	MOUNTING	CORD	COLOR	2ND COLOR
27K - 2700K	90+ ³	WH - White	0-EMG-LED-10W	FM - Flush Mount ⁵	SM - Suspended up to 9 ft.	BK - White	GRN - Green	
30K - 3000K	98+ ³	BK - Black	0-EMG-LED-20W	DC - Deep ⁵	PM12 - 12 in. Pendant	WH - Black		
35K - 3500K		CUS - Custom ²			PM18 - 18 in. Pendant	CL - Clear		
40K - 4000K					PM24 - 24 in. Pendant			
50K - 5000K ²					PM36 - 36 in. Pendant			
					PM48 - 48 in. Pendant			

¹ consult factory

² 5000K available with 85+ CRI only

³ 347 Volt available with DIM10 only

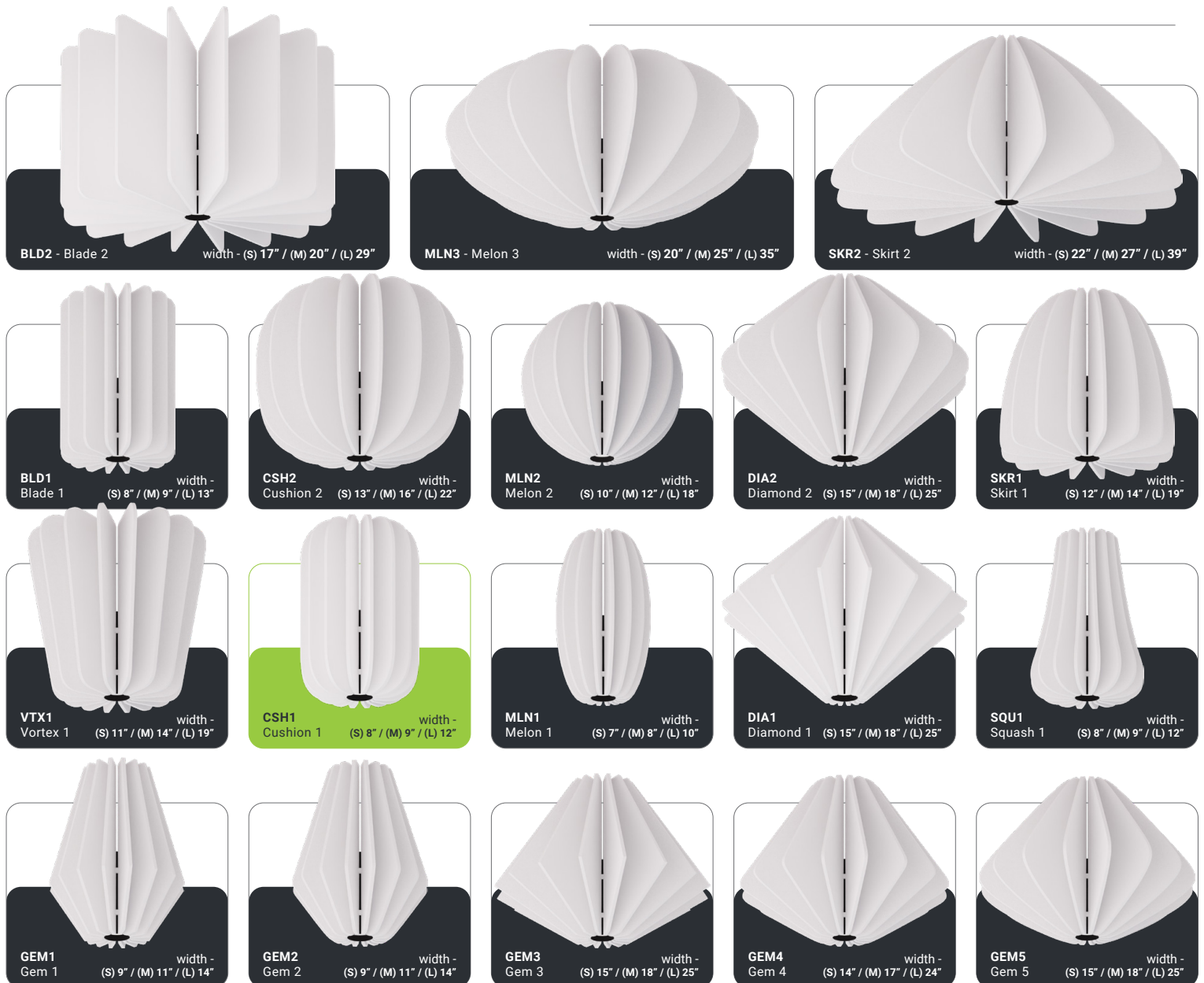
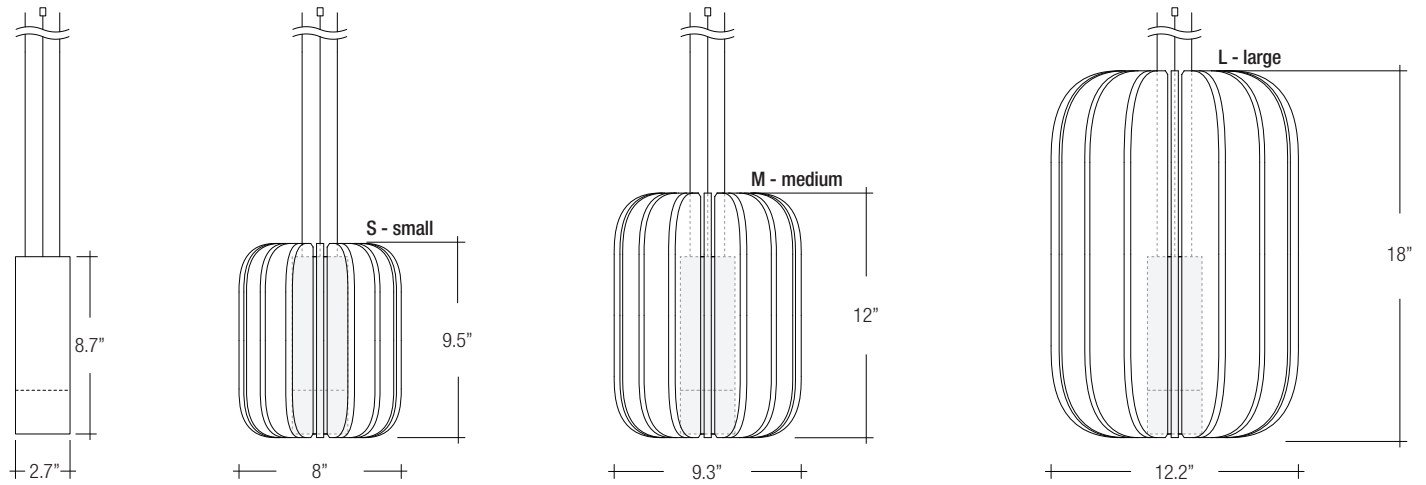
⁴ DMX available in 120V only

⁵ 5000K available with 85+ CRI only

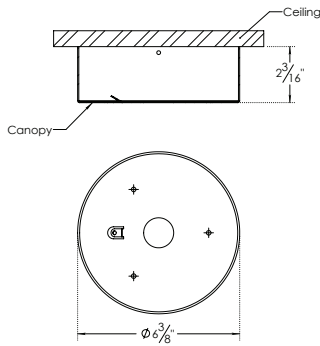
⁶ 98+ CRI available in 2700K, 3000K, 4000K only

⁷ 4.8k drivers are remote mount for flush mount canopy

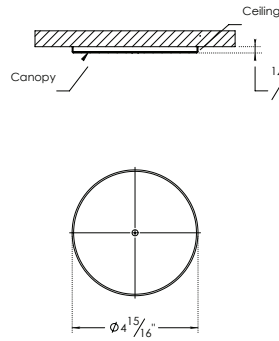
DIMENSIONS



CANOPY TYPES & DIMENSIONS



DEEP CANOPY (DC)
Integrated Driver Option



FLUSH MOUNT (FM)
Remote Mounted Driver Option

CORD COLORS



Black



White



Clear / Silver

Declare.
Label Pending

SOFTSENSE MATERIAL COLOR CHART

Panel Thickness: 9 mm / 0.35" (+/- 0.5 mm)

ASTM E84-16 Fire Rated*



*quick ship available for any color depending on order quantity. Please consult factory.
*all colors are ASTM E84-16 fire rated, select colors are available as Class A