



DIMENSIONS

Millwork

Flanged

Trimless

TRIM OPTIONS



Round Flanged



Round Trimless



Round Millwork



Round Pin Hole
Flanged



Round Pin Hole
Trimless

NOMINAL LUMENS	DELIVERED LUMENS	WATTAGE
2000	2509	26 W
1500	1527	18 W
1200	1392	16 W
900	1037	12 W
700	881	10 W

Based on 3000K, 90+ CRI. Actual wattage may vary +/- 5%

HIGH PERFORMANCE OPTIONS

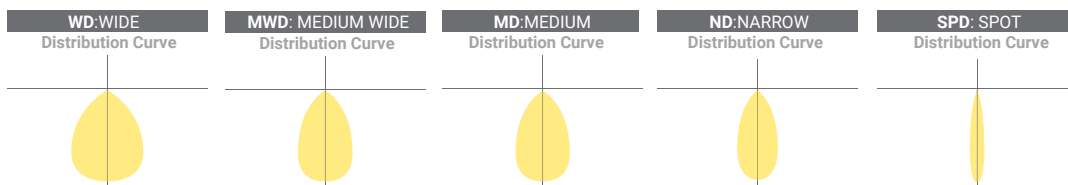
NOMINAL LUMENS	DELIVERED LUMENS	WATTAGE
1500	1680	17 W
1200	1380	14 W

Based on 3000K, 90+ CRI. Actual wattage may vary +/- 5%

FEATURES

A high-quality architectural LED downlight with a small aperture that offers precise and glare-free illumination, remarkable flexibility, and unbeatable performance. By using a single universal housing, it supports various trims and field-changeable optics, and is full adjustable to any beam angle, up to 37 degrees, with a full 360 degrees horizontal rotation. Whether it's for high-end architecture hospitality, commercial, residential, or retail settings, the FCD-2-RD4 is an innovative and versatile solution for any design application that needs a small aperture.

LUMENS	700, 900, 1200, 1500, 2000, (custom lumen packages available)
CCT & DYNAMIC PLATFORMS	Dims to Warm: 30K-18K or 27K-18K
CRI	90+ Standard, 98+ Optional
COLOR QUALITY	2-Step MacAdam Ellipse
DISTRIBUTIONS	WD(Wide-52°), MWD(Medium Wide-45°), MD(Medium-35°), ND(Narrow-24°), SPD(Spot-15°),
TRIM OPTIONS	Downlight, Lensed Downlight, Pinhole Square and Round Trim, Trim-less and Millwork Options.
REFLECTOR COLORS	WH (White), BZ (Bronze), BK (BK), RAL (Custom color)
FLANGE COLORS	WH(White), BZ (Bronze), BK (BK), RAL (Custom color)
DIMMING	0-10V Flicker Free 1% Dimming Standard (DIM10), LUTH, ELDO10.1, ELDODALI.1, DIMTR
REMOTE EMERGENCY	10W - Up to 1000L Output 20W - Up to 2000L Output
LIFETIME	L70 at 1 20,000 Hours
PHOTOMETRIC TESTS	In Accordance with IES LM79-08, LM80 and TM-30, TM-21
CCEA OPTION	For CCEA approved FCD Family, please contact Elite Lighting for more information.



FLANGED OPTION

Post-painted powder coated Die-Cast trim ring available in white and custom colors (Please consult factory for custom paint color options). Collar and trim rotate jointly, and a Solite frosted lens is optional on all trims (Please consult factory for additional lens options). Available in Open Downlight, Lensed Downlight, Pinhole Downlight. Trims attach to the housing with ball catch and springs for snug fit and zero light leakage.

TRIM-LESS OPTION

The aluminum perforated mesh cover is designed for installation in drywall or plaster ceilings. Mudding can be applied up to the edge of the luminaire opening for a seamless look. The trimless accessory is secured to the housing to prevent fractures in the ceiling and/or drywall during and after installation. Trims attach to the housing using ball catch and springs to ensure a snug fit and zero light leakage. This product is available in Open Downlight, Lensed Downlight, and Pinhole Downlight options.

HOUSING

Designed for new construction installations and suitable for Non IC and IC applications. Thermally protected, specification grade recessed housing. For new construction insulated ceilings where housing will be in direct contact with insulation. Heatsink is Aluminium formed construction is painted matte black for maximum heat dissipation and life time, rust protection and glare-free illumination.

MOUNTING

Pre-installed bar hangers enable the housing to be positioned and locked at any point within a 24-inch joist span. They can be positioned on either the long or short axis of the housing and shortened for 12-inch joists. The bar hangers can be attached to the T-Bar spline using additional slots and holes for special mounting methods, if required. Butterfly brackets made of 18-gauge steel are offered, and can be adjusted vertically. They can be installed using 3/4" or 1-1/2" lathing channel, 1/2" EMT, or with optional C-Channel mounting bars.

LED DYNAMIC PLATFORM OPTIONS



Dims to Warm with Smart Dimming Technology. At 100% full brightness the luminaire is at 3000K. When dimmed to 1%, the light transitions to 1800K, creating a warm ambience within the space. (Click here for more details)

LED LIGHT ENGINE

High color rendering of 90+ CRI and guaranteed color consistency with a 2-step MacAdam Ellipse Scale. Available in a range of warm dimming technology CCT including 30K-18K, 27K-18K

DIMMING & DRIVER INFORMATION

DIM10 - 0-10V dimming on either MVOLT 120V or 277V, 347V. Dimmable down to 1% of initial lumens, standard.

DIMTR - Triac & Electronic low voltage dimming. Available in 120V.

LUTH - Lutron LDE1 Hi-Lume 1% EcoSystem LED driver with Soft-on, Fade-to-Black dimming technology.

ELDO10.1 - EldoLED SoloDrive 0-10V. Dimming down to 0.1%.

ELDODALI - DALI DT6, DT8 dimming down to 1%. Available on all luminaires.

DRIVER ELECTRICAL INFORMATION

The LED driver is rated for an input of 120V/277V at 50 to 60Hz, with a power factor ranging from 90% to 100%. It produces less than 20% THD and has thermal protection for added safety. The junction box and driver can be accessed from above or below the ceiling. The junction box is listed for through branch circuit wiring.

LISTINGS

c-UL-us-Listed for Damp and Dry Location.

c-UL-us-Listed for feed through wiring.

EMI/RFI emissions per FCC 47CFR part 15 Class B at 120VAC

Contains no mercury or lead and RoHS compliant.

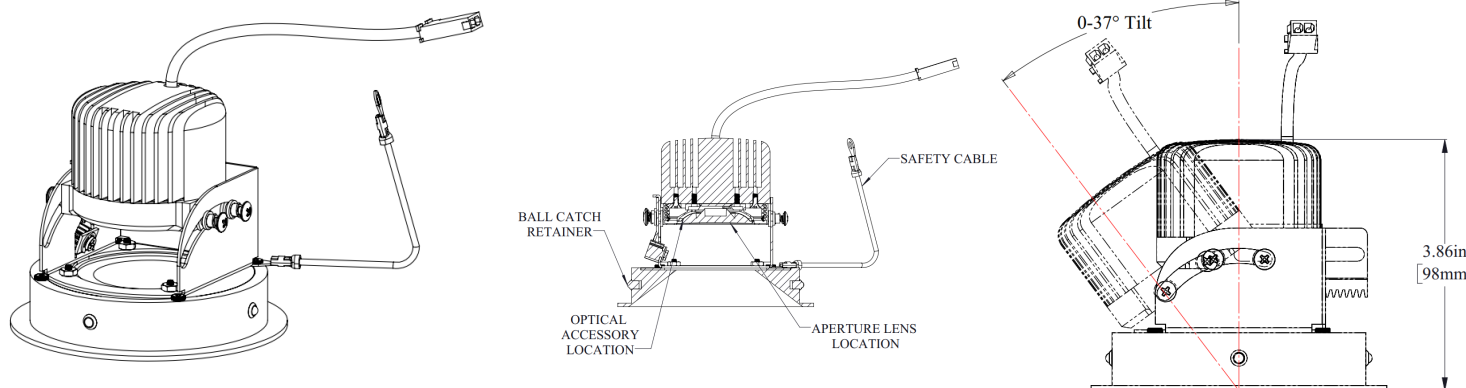
WARRANTY

Five-year warranty for parts and components. (Labor not included)

360 Deg. HORIZONTAL LOCKING Effortlessly rotates on a 360 deg horizontal rotational smooth slotted groove track system.

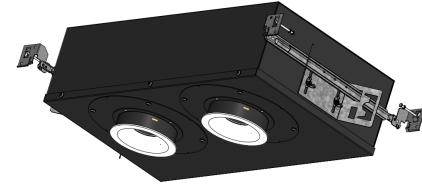
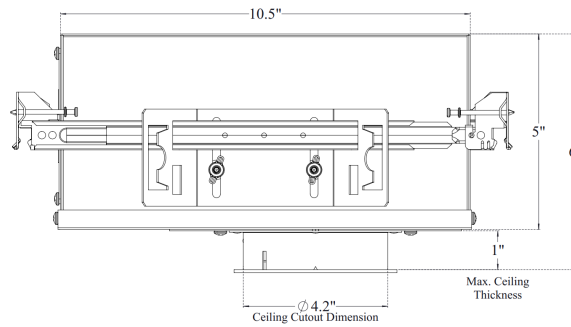
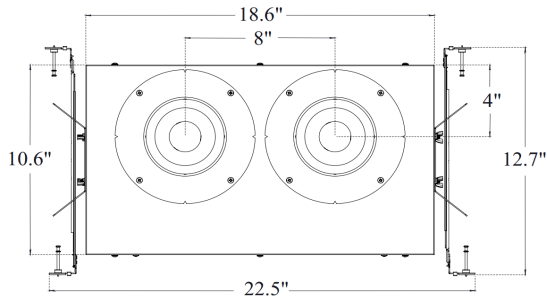
TOOL-LESS ADJUSTABILITY Of the luminaire is to ensure whatever position is desired up to 37 degrees the beam and maximum lumen power is exiting the luminaire accordingly.

NUMERICAL DEGREE Allows for the luminaires to be easily field adjusted for precision, performance, and versatility. At installation, you have the ability to lock the beam angle to 1 degree increments, which are marked at 5 degree increments.

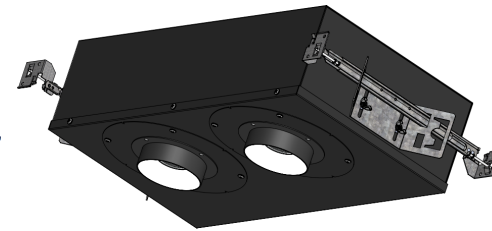
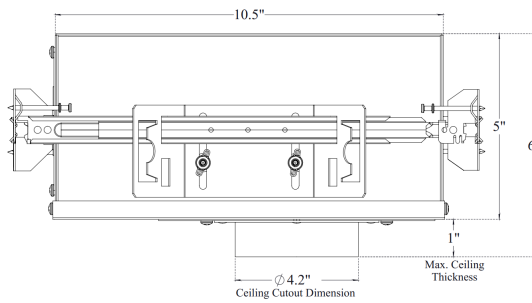
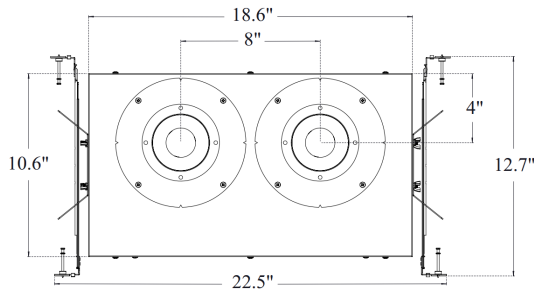


Lighting Housing Styles

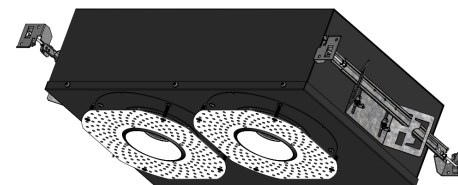
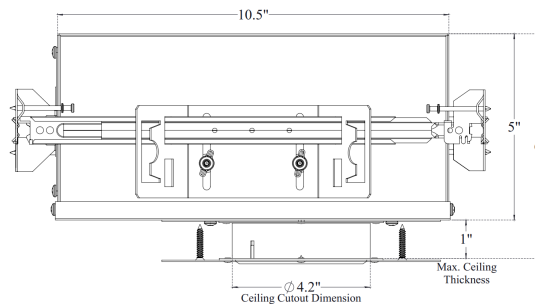
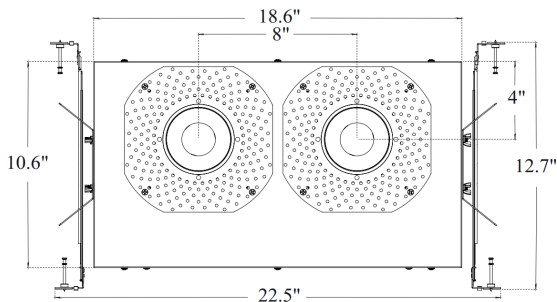
FLANGED

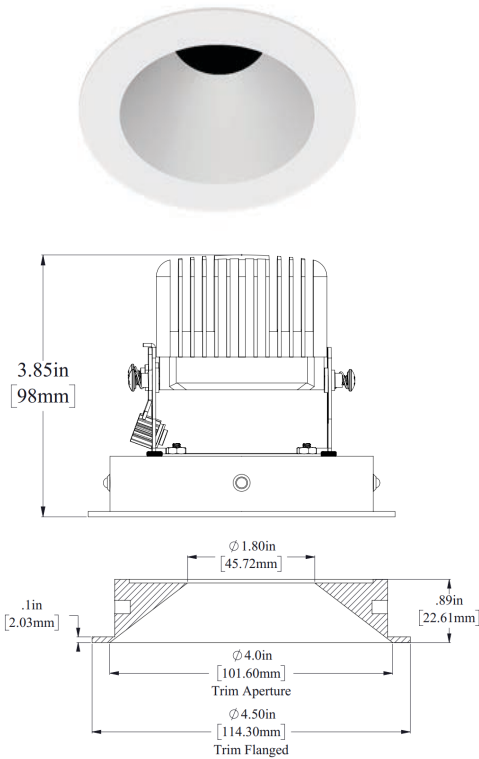


MILLWORK

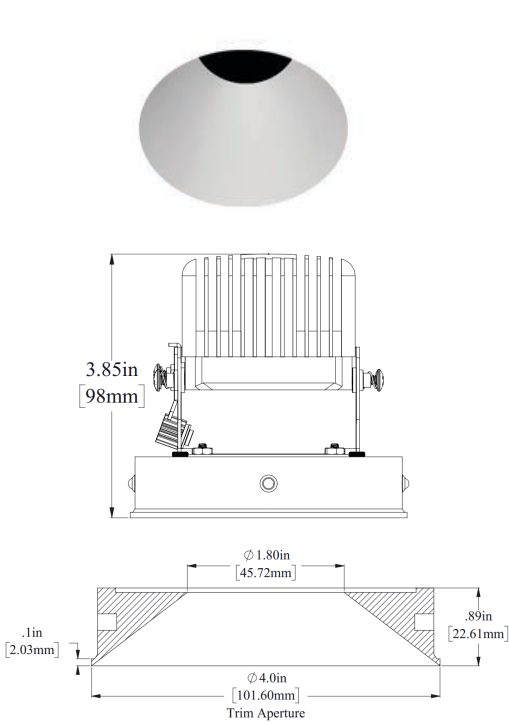


TRIMLESS

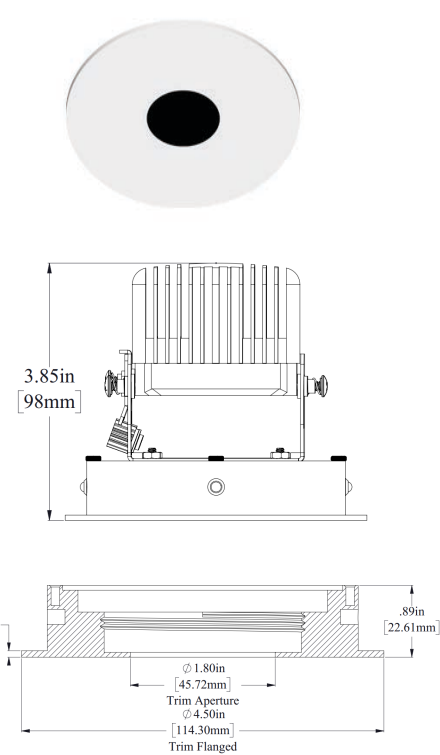




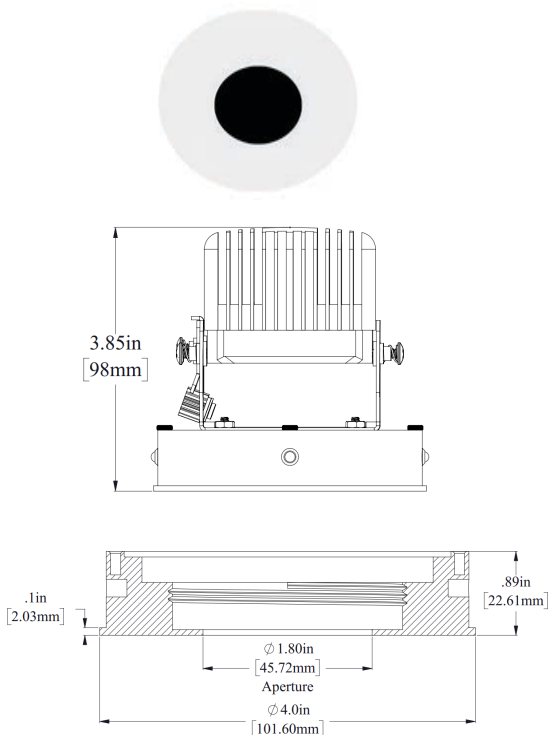
FCD-RD4-F-1302/1328
Flanged



FCD-RD4-TL-1302/1328
Trimless/Millwork



FCD-RD4-PHF-1312
Pinhole Flanged



FCD-RD4-PHTL-1301
Pinhole Trimless

HOUSING

EXAMPLE: FCD-2-RD4A-F-WDM-30K-18K-900L-DIM10-120-EMG-LED-10W-IC

	TYPE	LUMEN	DIMMING	VOLTAGE	EMERGENCY OPTIONS	OPTIONS
HIGH PERFORMANCE	FCD-2-RD4A-					
	<input type="checkbox"/> FCD-2-RD4A-F-WDM-30K-18K <input type="checkbox"/> FCD-2-RD4A-F-WDM-27K-18K	<input type="checkbox"/> 900L <input type="checkbox"/> 1200L <input type="checkbox"/> 1500L <input type="checkbox"/> 2000L	<input type="checkbox"/> DIM10 <input type="checkbox"/> DIMTR <input type="checkbox"/> LUTH <input type="checkbox"/> ELD010.1 <input type="checkbox"/> ELD0DAL1.1	<input type="checkbox"/> 120 <input type="checkbox"/> 277 <input type="checkbox"/> 347 <input type="checkbox"/> MVOLT (DIM10 only)	<input type="checkbox"/> EMG-LED-10W <input type="checkbox"/> EMG-LED-20W <input type="checkbox"/> EMG-LED-G2-10W-SDT*	<input type="checkbox"/> Blank <input type="checkbox"/> BP31 - 27" C-channel bar hangers. <input type="checkbox"/> RIF - RIF filter. <input type="checkbox"/> NC - New Construction. <input type="checkbox"/> IC - Insulation Contact Rated. <input type="checkbox"/> CP - CCEA (Chicago Plenum)
	<input type="checkbox"/> FCD-2-RD4A-TL-WDM-30K-18K <input type="checkbox"/> FCD-2-RD4A-TL-WDM-27K-18K				Typical lumen output of the luminaire is up to 1000L with EMG-LED-10W option & 2000L with EMG-LED-20W option in emergency mode. Contact the factory for details. Remote mounted installation *Consult Factory for Self Diagnostic	
	<input type="checkbox"/> FCD-2-RD4A-ML-WDM-30K-18K <input type="checkbox"/> FCD-2-RD4A-ML-WDM-27K-18K					

1- DIMTR is available in 120V only
2- 347V is Only available for DIM10

TRIM OPTIONS

TRIM, TRIM-LESS & MILLWORK OPTIONS

TRIM OPTIONS

EXAMPLE: FCD-RD4-F-1302-900L-SPD(15°)-WDM-30K-18K-90-WH-WH

TRIM OPTIONS	LUMENS	OPTICS	CCT	CRI	TRIM FINISH	FLANGE FINISH
FCD-RD4-						
ROUND-TRIM FLANGED <input type="checkbox"/> FCD-RD4-F-1302 Open Downlight <input type="checkbox"/> FCD-RD4-F-1328 Lensed Downlight <input type="checkbox"/> FCD-RD4-PHF-1312 Pinhole Downlight	<input type="checkbox"/> 900L <input type="checkbox"/> 1200L <input type="checkbox"/> 1500L <input type="checkbox"/> 2000L	<input type="checkbox"/> SPD (15°) <input type="checkbox"/> ND (24°) <input type="checkbox"/> MD (35°) <input type="checkbox"/> MWD (45°) <input type="checkbox"/> WD (52°)	<input type="checkbox"/> WDM-30K-18K <input type="checkbox"/> WDM-27K-18K	<input type="checkbox"/> 90 <input type="checkbox"/> 98	<input type="checkbox"/> WH <input type="checkbox"/> BK <input type="checkbox"/> BZ Consult factory for RAL Custom color	<input type="checkbox"/> WH <input type="checkbox"/> BK <input type="checkbox"/> BZ Consult factory for RAL Custom color
ROUND TRIM-LESS/MILLWORK <input type="checkbox"/> FCD-RD4-TL-1302 Open Downlight <input type="checkbox"/> FCD-RD4-TL-1328 Lensed Downlight <input type="checkbox"/> FCD-RD4-PHTL-1301 Pinhole Downlight	<input type="checkbox"/> 900L <input type="checkbox"/> 1200L <input type="checkbox"/> 1500L <input type="checkbox"/> 2000L	<input type="checkbox"/> SPD (15°) <input type="checkbox"/> ND (24°) <input type="checkbox"/> MD (35°) <input type="checkbox"/> MWD (45°) <input type="checkbox"/> WD (52°)	<input type="checkbox"/> WDM-30K-18K <input type="checkbox"/> WDM-27K-18K	<input type="checkbox"/> 90 <input type="checkbox"/> 98	<input type="checkbox"/> WH <input type="checkbox"/> BK <input type="checkbox"/> BZ Consult factory for RAL Custom color	

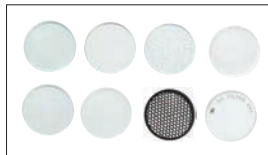
1- DIMTR is available in 120V only
2- 347V is only available for DIM10

Emergency only accessible from the top of the luminaire

COLOR FILTERS & DISTRIBUTION FILTERS

COLOR LENS FILTER

CAT. #	COLOR
BP8MR16-BL	BLUE
BP8MR16-GR	GREEN
BP8MR16-PI	PINK
BP8MR16-PU	PURPLE
BP8MR16-DL	DAY LIGHT
BP8MR16-YE	YELLOW
BP8MR16-AM	AMBER
BP8MR16-OR	ORANGE
BP8MR16-RE	RED



DISTRIBUTION LENS FILTER

CAT. #	COLOR
1. BP8MR16-FR	FROSTED
2. BP8MR16-SF	SOFT FOCUS
3. BP8MR16-CL	CLEAR
4. BP8MR16-UV	ULTRAVIOLET
5. 6BP8MR16-SP	SPREAD
6. BPMR16-HC	HONEY COMB
7. BPMR16-LI	LINEAR
8. BPMR16-SOL	SOLITE

- Note:**
Additional lens filters must only be used on open non-lensed downlight trim options