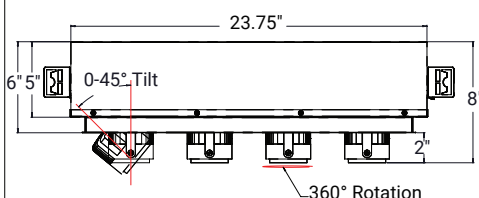
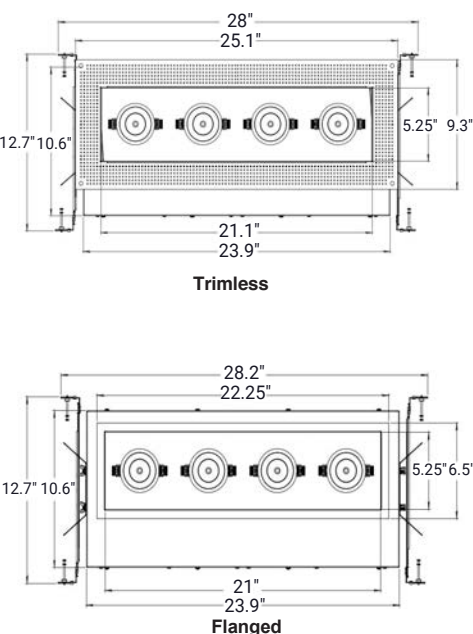
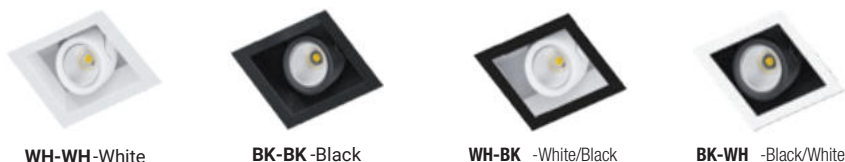


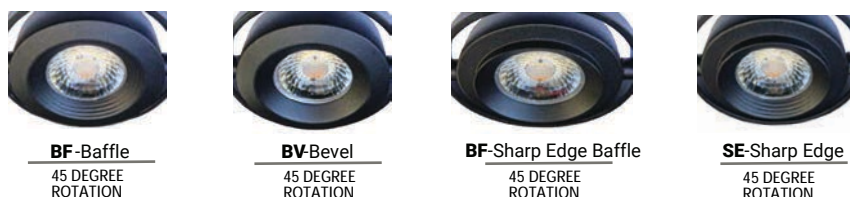
DIMENSIONS



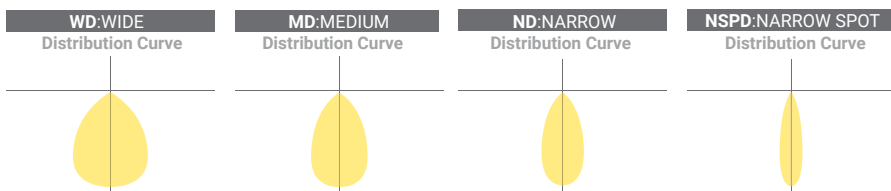
FLANGED COLORS



HEAD OPTIONS



DISTRIBUTION PATTERNS



FEATURES

A recessed, multi-head downlight with 1 to 4 adjustable heads offers precise and glare-free lighting. Each light can be aimed with complete adjustability, rotating at 360° and tilting at 45° vertically and can be locked into any desired position. The luminaire is customizable to suit particular applications, with interchangeable lumen packages and optics that can be modified in the field with in a single housing. Our product line includes numerous warm dimming CCT options, encompassing a range of cool to warm tones. This versatility makes it ideal for various settings including retail, hospitality, commercial and high-end residential applications.

| | |
|-------------------------|---|
| LUMENS | 900L, 1200L, 1500L, 2000L per head |
| CCT & DYNAMIC PLATFORMS | Dims to Warm: 30K-18K or 27K-18K |
| CRI | 90+ Standard, 98+ Optional |
| COLOR QUALITY | 2-Step MacAdam Ellipse |
| DISTRIBUTION PATTERNS | Wide, Medium, Narrow, Narrow Spot |
| TRIM OPTIONS | 1,2,3,4 Trim, Trimless |
| TRIM HEAD OPTIONS | Baffle, Bevel, Sharp Edge Baffle, Sharp Edge |
| HEAD COLORS | BK (Black), WH (White), Custom RAL colors |
| DIMMING | 0-10V Flicker Free 1% Dimming Standard(DIM10), LUTH, ELDO10.1 DIMTR, ELDODALI, ELDODMX. |
| REMOTE EMERGENCY | 10W, 20W, (consult factory) |
| LIFETIME | L70 at 120,000 Hours |
| PHOTOMETRIC TESTS | In Accordance with IES LM79-08, LM80 and TM-30, TM-21 |

*Only powers one head and must have ceiling access.

| NOMINAL LUMENS | DELIVERED LUMENS | WATTAGE |
|----------------|------------------|---------|
| 2000 | 1949 | 19W |
| 1500 | 1600 | 17W |
| 1200 | 1315 | 12W |
| 900 | 1082 | 9W |

Delivered lumen varies base on trim and distribution options.
Based on 3000K, 90+ CRI. Actual wattage may vary +/- 5%

OPTICS

The multi-segmented luminaire provides accurate beam control and features interchangeable optics in a range of lumen options, including Wide, Medium, Narrow, and Narrow Spot. With exceptional control and flexibility of optics, each luminaire head can offer task, accent, or general illumination. Trim options are available in either trim or trimless forms, with a choice of black or white interior finishes. Merchandising is a constantly evolving field, and the multiple combo provides an ideal solution for featuring up to four different displays with a single housing.

AIMING

The exclusive hot targeting system permits every separate head to rotate horizontally by 360° and vertically by 45°, and to focus accurately on the required position, which can be secured into place without requiring any tools.

HOUSING

Thermally protected for new construction, non-IC ceilings or situations where insulation can be kept 3" from the housing. Our product can be vertically adjusted to cater to various ceiling heights. Constructed from 18-gauge steel and post-painted, each luminaire head is made from aluminium to dissipate heat.

TRIM OPTION

Post-painted aluminium trim is offered in white, black, and custom RAL colours. Please contact the factory for custom paint colour options. The trim firmly attaches to the housing for a tight fit and no light leakage.

TRIMLESS OPTION

Perforated mesh cover intended for installation in drywall or plaster ceilings. Mudding may be applied right up to the edge of the luminaire opening to provide a seamless appearance. Trimless accessory is secured to the housing to prevent fractures in the ceiling and/or drywall during and after installation.

MOUNTING FRAME & BRACKET

Butterfly brackets that come pre-installed can be adjusted vertically using C-Channel mounting bars. This allows for the housing to be locked and positioned at any point within a joist span of 24 inches. Additionally, bar hangers can be mounted on a T-bar spline with extra slots and holes for special mounting methods.

THERMAL MANAGEMENT SYSTEM

The aluminum heat sink passively cools the replaceable and upgradeable LED light engine and driver, which can be accessed from below the ceiling. The unique locking mechanism aligns the reflector with the light engine, ensuring consistency in light quality.

LED DYNAMIC PLATFORM OPTIONS



The luminaire features SmartDimming Technology, transitioning to a warm ambiance within the when the light is dimmed to 1%, it transitions to 1800K, which generates a warm ambiance in the area.

LED LIGHT ENGINE

High color rendering with a 90+ CRI and guaranteed color consistency through the use of 2-step MacAdam Ellipse Scale binning. Available in a variety of warm dimming CCT technologies, including 30K-18K and 27K-18K.

DRIVER ELECTRICAL INFORMATION

The LED driver has a rating of 50 to 60Hz at 120V input, generates a THD of less than 20%, boasts a power factor ranging from 90% to 100%, and is equipped with thermal protection for enhanced safety.

DIMMING & DRIVER INFORMATION

DIM10 allows for 0-10V dimming on either MVOLT 120 or 347V. It can be dimmed down to 1% of initial lumens and is the standard option.

DIMTR supports triac and electronic low voltage dimming and is available in 120V, only offering up to 3000 lumens.

LUTH is the Lutron LDE1 Hi-Lume Eco System, offering 1% dimming with Soft in Fade to Black dimming technology.

ELDO10.1 - EldoLED SoloDrive 0-10V. Dimming down to 0.1%.

ELDODALI - DALI DT6, DT8 dimming down to 1%.

ELDODMX - EldoLED PowerDrive dimming down to 0.1%.

Please see EldoLED website for wiring diagrams and a list of compatible DMX and DALI control systems.

WARRANTY

Five-year carefree warranty for parts and components. (Labor not included.)

LISTINGS

c-UL-us-Listed for Damp and Dry Location.

c-UL-us-Listed for feed through wiring.

EMI/RFI emissions per FCC 47CFR part 15 Class B at 120VAC

Contains no mercury or lead and RoHS compliant.

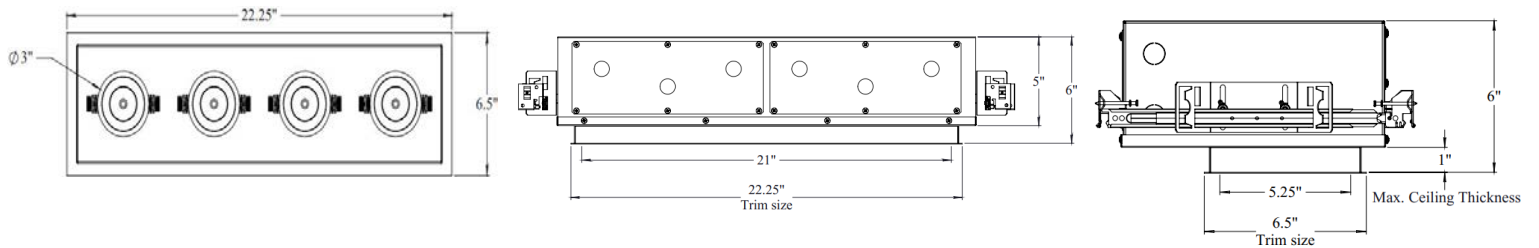
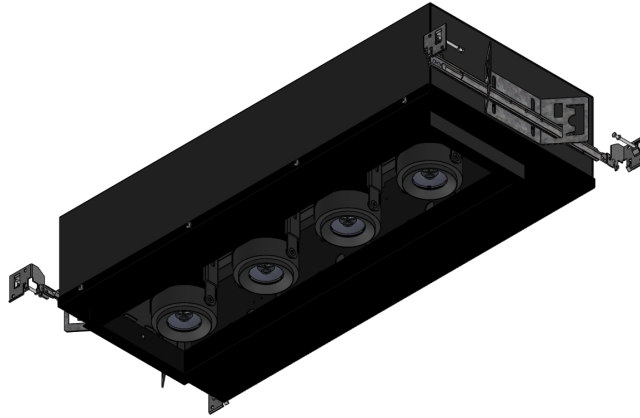
Energy Star and State of California Title 24 high efficacy LED compliance, per JA8 High Efficacy Lighting certification standards.

Example: **FC4MC-LED-WDM-30K-18K-12-DIM10-120-90-F-BK-BK-SE-BK-WD-BP8MR16-BL-BP8MR16-CL-EMG-LED-20W-WD**

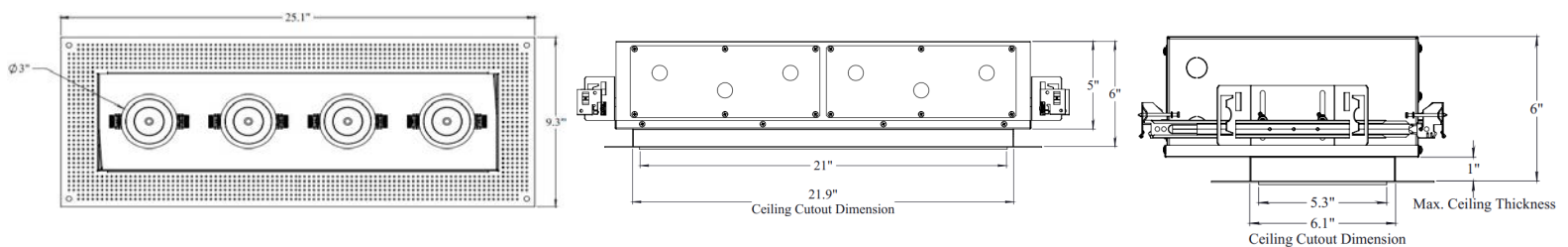
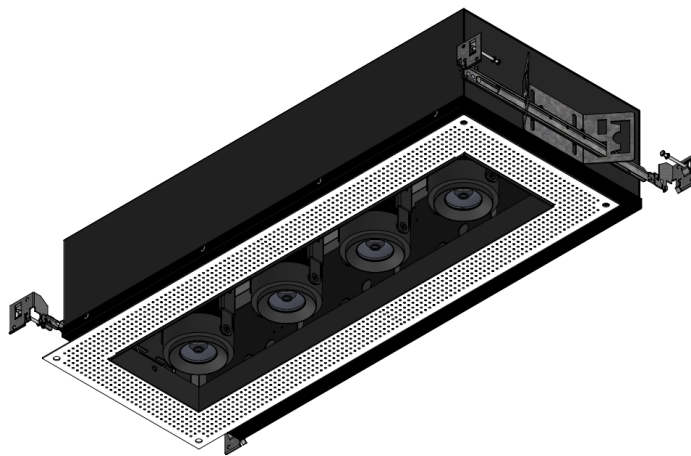
| FC4MC-LED | | | | | | | | | |
|--|--|---|---|--|---|------------------------------|--|--------------------------|---|
| SERIES | | LUMENS | DIMMING | VOLTAGE | CRI | TRIM OPTION | TRIM COLOR | INTERIOR COLOR | TRIM HEAD OPTION |
| FC4MC-LED-WDM-30K-18K FC4MC-LED-WDM-27K-18K | | 90 - 900lm/Per Head 12 - 1200lm/Per Head 15 - 1500lm/Per Head 20 - 2000lm/Per Head | DIM10 - DIM10 DIMTR ¹ - DIMTR LUTH ¹ - LUTH ELDO10-1 ¹ - ELDO10-1 ELDODALI-1 ¹ - ELDODALI-1 ELDODMX-1 - ELDODMX-1 | 120 - 120V MVOLT ¹ - MVOLT 347 ² - 347V | 90 - 90CRI+ 98 - 98CRI+ | F - Flanged TL - Trimless | WH - White BK - Black | WH - White BK - Black | BV - Bevel BF - Baffle SE - Sharp Edge SEB - Sharp Edge Baffle |
| TRIM HEAD COLOR OPTION | | OPTICS | COLOR FILTER | DISTRIBUTION FILTER | REMOTE EMERGENCY | | ACCESSORIES | | |
| BK - Black WH - White CU - Custom | | WD - Wide 60 MD - Medium 36 MND - Narrow 24 NSPD - Narrow Spot 15 | BP8MR16-BL - Blue BP8MR16-GR - Green BP8MR16-PI - Pink BP8MR16-PU - Purple BP8MR16-DL - Day Light BP8MR16-YE - Yellow BP8MR16-AM - Amber BP8MR16-OR - Orange BP8MR16-RE - Red | BP8MR16-FR - Frosted BP8MR16-SF - Soft Focus BP8MR16-CL - Clear BP8MR16-UV - Ultraviolet BP8MR16-SP - Spread BP8MR16-HC - Honey Comb BP8MR16-LI - Linear BP8MR16-SOL - Solite | EMG-LED-10W - EMG-LED-10W EMG-LED-20W - EMG-LED-20W EMG-LED-G2-10W-STD - EMG-LED-G2-10W-STD | | BP30 - BP30-24" C channel bar hangers WD - Wide 60 MD - Medium 36 ND - Narrow 24 NSPD - Narrow Spot 24 IC - Insulated ceiling rated | | |

1. DIMTR is only available for 120V.
2. 347V is only available with DIM10

FLANGED



TRIMLESS



TRIM OPTIONS



BF-Baffle

45 DEGREE
ROTATION



BV-Bevel

45 DEGREE
ROTATION



SE-Sharp Edge

45 DEGREE
ROTATION



SEB-Sharp Edge Baffle

45 DEGREE
ROTATION

COLOR FILTERS & DISTRIBUTION FILTERS



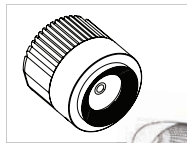
MR16 LENS FILTER

CAT. #

1. **BP8MR16-BL**
2. **BP8MR16-GR**
3. **BP8MR16-PI**
4. **BP8MR16-PU**
5. **BP8MR16-DL**
6. **BP8MR16-YE**
7. **BP8MR16-AM**
8. **BP8MR16-OR**
9. **BP8MR16-RE**

COLOR

- BLUE
GREEN
PINK
PURPLE
DAY LIGHT
YELLOW
AMBER
ORANGE
RED



MR16 SPECIALTY LENS FILTER

CAT. #

1. **BP8MR16-FR**
2. **BP8MR16-SF**
3. **BP8MR16-CL**
4. **BP8MR16-UV**
5. **BP8MR16-SP**
6. **BPMR16-HC**
7. **BPMR16-LI**
8. **BPMR16-SOL**

COLOR

- FROSTED
SOFT FOCUS
CLEAR
ULTRAVIOLET
SPREAD
HONEY COMB
LINEAR
SOLITE

***Please consult factory**

Note:

Additional lens filters should only be utilized on open, non-lensed trim options for downlights.